

Lac La Biche

www.townllb.com

Population

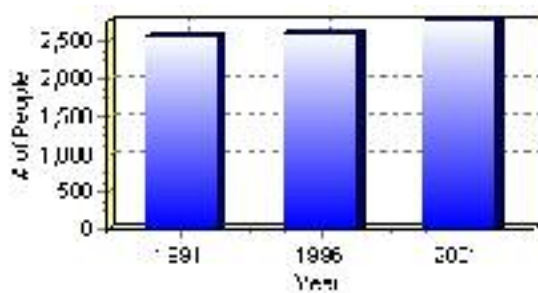
Total Population

Population 2008*	0
Population 2007*	0
Population 2006*	2,776
Population 2005*	2,776
Population 2004*	2,776
Population 2001**	2,775
Population 1996**	2,611
Population 1991**	2,549
Population % change 1991-1996	2.37%
Population % change 1996-2001	5.91%
Population % change 2001-2006	0.04%

* Source: Official Population List, Alberta Municipal Affairs

** Source: Statistics Canada Census

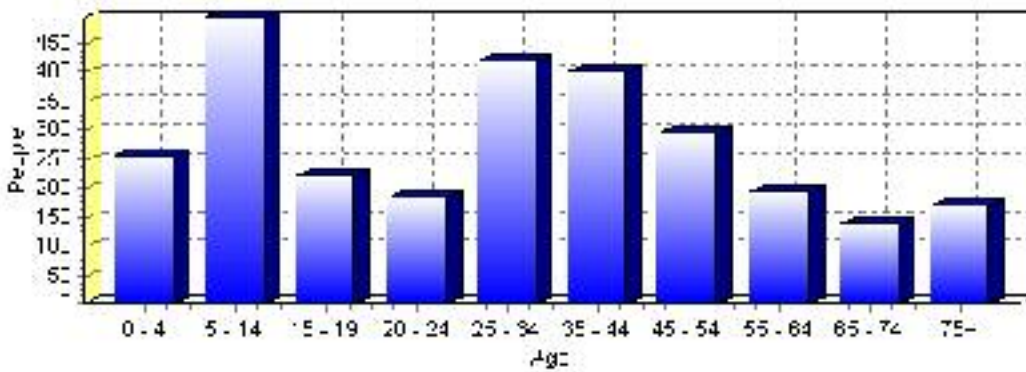
Total Population 1991-2001



Population by Age and Gender	1996 Male	1996 Female	1996 Total	2001 Male	2001 Female	2001 Total
Age 0 - 4	135	115	250	125	130	255
Age 5 - 14	250	210	460	265	230	495
Age 15 - 19	95	115	210	120	100	220
Age 20 - 24	115	115	230	80	105	185
Age 25 - 34	195	235	430	190	230	420
Age 35 - 44	165	175	340	200	200	400
Age 45 - 54	110	130	240	150	145	295
Age 55 - 64	85	75	160	95	100	195
Age 65 - 74	45	80	125	70	70	140
Age 75 and older	70	100	170	55	115	170
Total All Persons	1,270	1,340	2,610	1,335	1,440	2,775

Source: Statistics Canada 1996 & 2001 Census (numbers may not add up due to rounding)

Lac La Biche Population by Age Group (2001)

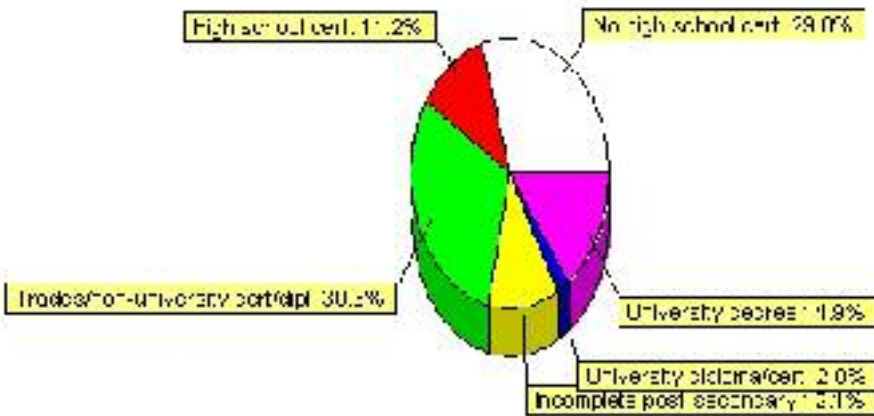


Education Statistics

Highest level of schooling for Population 20yrs and older	2001	%
People without high school certificates	530	29.78%
People with high school certificates	200	11.24%
People with trades or non-university certificate or diploma	540	30.34%
People with post-secondary education (not completed)	215	12.08%
People with university diploma/certificate	35	1.97%
People with university degree	265	14.89%
Total Population 20 years and older	1,780	100.00%

Source: Statistics Canada 2001 Census (numbers may not add up due to rounding)

Lac La Biche Highest Level of Schooling 2001



Population with Post Secondary Qualifications	1996	%	2001	%
Agriculture and biological sciences	30	3.90%	25	2.99%
Commerce, management and business administration	135	17.53%	135	16.17%
Educational, recreational and counseling services	140	18.18%	155	18.56%
Engineering and applied science tech. and trades	180	23.38%	235	28.14%
Engineering and applied sciences	25	3.25%	15	1.80%
Fine and applied arts	20	2.60%	25	2.99%
Health professionals, science and technologies	105	13.64%	105	12.57%
Humanities and related fields	25	3.25%	25	2.99%
Mathematics and physical sciences	10	1.30%	0	0.00%
Social sciences and related fields	105	13.64%	110	13.17%
Other and/or no specialization	0	0.00%	0	0.00%
Total people with post secondary qualifications	770	100.00%	835	100.00%
Females with post-secondary qualifications	355	46.10%	440	52.69%
Males with post-secondary qualifications	415	53.90%	395	47.31%

Source: Statistics Canada 1996 & 2001 Census (numbers may not add up due to rounding)

Labour Force

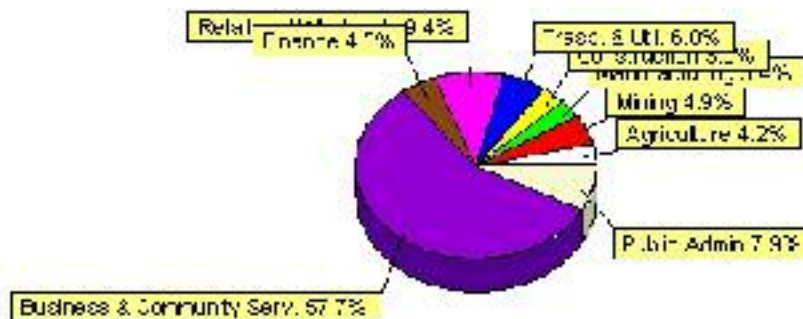
Labour force by activity	1996	2001
In the labour force, both sexes	1,190	1,330
Not in the labour force, both sexes	615	605
Total population 15 and over	1,800	1,935
Employed, both sexes	1,035	1,235
Unemployed, both sexes	150	100
Participation rate, both sexes	66.00%	69.00%
Unemployment rate, both sexes	13.00%	8.00%

Source: Statistics Canada 1996 & 2001 Census (numbers may not add up due to rounding)

Labour Force by Industry Division	1996	% of total	2001	% of total
Agriculture	20	1.75%	55	4.15%
Mining	45	3.95%	65	4.91%
Manufacturing	65	5.70%	45	3.40%
Construction	70	6.14%	40	3.02%
Transportation. & Utilities	65	5.70%	80	6.04%
Retail and Wholesale	210	18.42%	125	9.43%
Finance	40	3.51%	60	4.53%
Business & Community Services	540	47.37%	765	57.74%
Public Administration	55	4.82%	105	7.92%
Total All Industries	1,140	100.00%	1,325	100.00%

Source: Statistics Canada 1996 & 2001 Census (numbers may not add up due to rounding)

Lac La Biche Labour Force By Industry - 2001



Labour Force by Major Occupational Groups	1996	%	2001	%
Management occupations	90	7.89%	155	11.70%
Business, Finances and administrative occupations	130	11.40%	195	14.72%
Natural and applied sciences and related occupations	40	3.51%	60	4.53%
Health occupations	70	6.14%	65	4.91%
Occupations in social science; education; government and religion	165	14.47%	240	18.11%
Occupations in art; culture; recreation and sport	15	1.32%	25	1.89%

Sales and service occupations	365	32.02%	280	21.13%
Trades; transport; equipment operators and related occupations	160	14.04%	205	15.47%
Occupations unique to primary industry	45	3.95%	85	6.42%
Occupations unique to processing; manufacturing and utilities	55	4.82%	25	1.89%
Occupations not elsewhere classified	45	3.95%	10	0.75%
Total - All Occupations (major groups)	1,140	100.00%	1,325	100.00%
Females - All Occupations	515	45.18%	620	46.79%
Males - All Occupations	625	54.82%	705	53.21%

Source: Statistics Canada 1996 & 2001 Census (numbers may not add up due to rounding)

Income

Family Income (Number of Families)	1996	%	2001	%
less than \$19,999	70	14.89%	130	31.71%
\$20,000 - \$39,999	120	25.53%	130	31.71%
\$40,000 - \$59,999	115	24.47%	105	25.61%
\$60,000 and over	165	35.11%	185	45.12%
Total number of families	470	100.00%	550	134.15%
Average family income	\$49,337		\$56,297	
Median family income	\$49,820		\$56,937	

Source: Statistics Canada 1996 & 2001 Census (numbers may not add up due to rounding)

Household Income (Number of Households)	1996	%	2001	%
less than \$19,999	270	30.34%	210	21.21%
\$20,000 - \$39,999	220	24.72%	265	26.77%
\$40,000 - \$59,999	175	19.66%	155	15.66%
\$60,000 and over	65	7.30%	355	35.86%
Total number of households	890	100.00%	990	100.00%
Average household income	\$41,503		\$50,414	
Median household income	\$32,994		\$43,145	

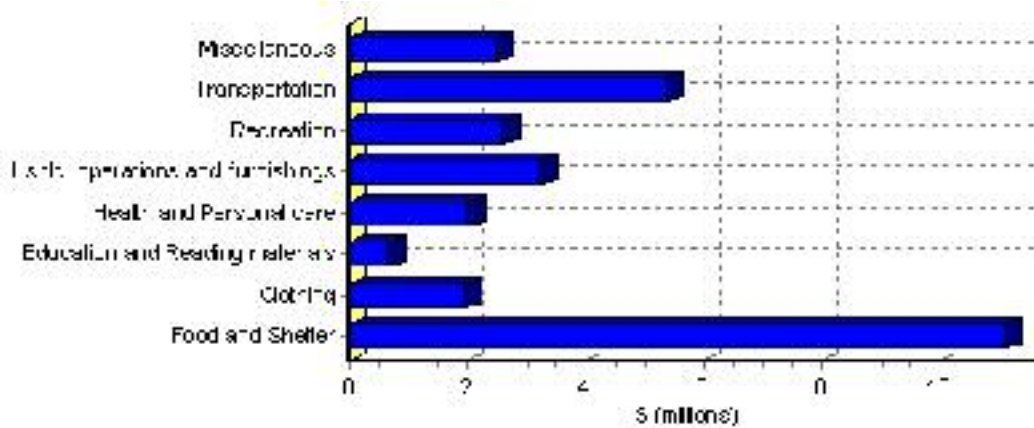
Source: Statistics Canada 1996 & 2001 Census (numbers may not add up due to rounding)

Family Expenditure

Expenditure Category	1992	% of total	1996	% of total
Food and Shelter	\$8,745,660	37.50%	\$11,130,808	37.59%
Clothing	\$1,566,970	6.72%	\$1,952,017	6.59%
Education and Reading materials	\$460,825	1.98%	\$682,793	2.31%
Health and Personal care	\$1,475,635	6.33%	\$2,046,425	6.91%
Hshld. operations and furnishings	\$2,548,360	10.93%	\$3,266,928	11.03%
Recreation	\$1,798,810	7.71%	\$2,604,825	8.80%
Transportation	\$4,818,685	20.66%	\$5,402,583	18.25%
Miscellaneous	\$1,898,270	8.14%	\$2,522,289	8.52%
Total Current Consumption	\$23,321,790	100.00%	\$29,608,668	100.00%
Total # of Households	840		891	
Average Consumption per Household	\$27,764		\$33,231	

Source: Statistics Canada Family Expenditure Survey 1992 & 1996 (numbers may not add up due to rounding).

Lac La Biche Family Expenditures (1996)

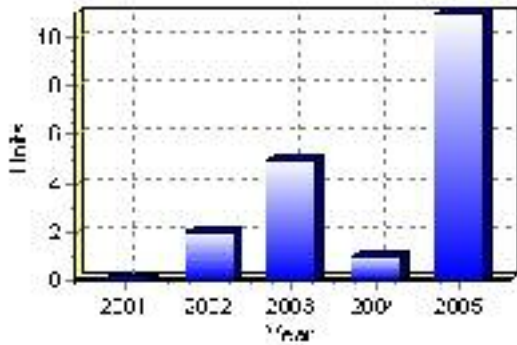


Building Permits

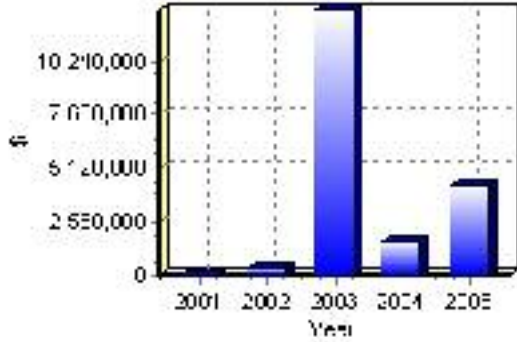
Total Building Permit Values	2001	2002	2003	2004	2005
Building Permits Value, Commercial	\$0	\$60,000	\$1,634,000	\$950,000	\$2,336,000
Building Permits Value, Industrial	\$0	\$0	\$8,355,000	\$0	\$0
Building Permits Value, Institutional	\$0	\$0	\$2,150,000	\$573,000	\$249,000
Building Permits Value, Residential	\$0	\$367,000	\$538,000	\$130,000	\$1,737,000
Building Permits Value, Total	\$0	\$427,000	\$12,677,000	\$1,653,000	\$4,322,000
Total Housing Starts	0	2	5	1	11

Source: Statistics Canada 2000-2004 Building Permits (numbers may not add up due to rounding)

Total Housing Starts



Value of Building Permits



Dwellings

Occupied Private Dwellings by Type	1996	% of total	2001	% of total
Apartments	220	24.72%	245	24.87%
Detached Duplexes	10	1.12%	15	1.52%
Movable Dwellings	75	8.43%	60	6.09%
Other single attached house	0	0.00%	5	0.51%
Row and semi-detached house	110	12.36%	90	9.14%
Single-detached house	470	52.81%	570	57.87%
Total number of occupied private dwellings	890	100.00%	985	100.00%
Private dwellings, owned	490	55.06%	530	53.81%
Private Dwellings, rented	405	45.51%	455	46.19%

Source: Statistics Canada 1996 & 2001 Census (numbers may not add up due to rounding)

Private Dwellings by Period of Construction	# of Dwellings	% of total
Period of construction, before 1946	45	4.57%
Period of construction, 1946 - 1960	50	5.08%
Period of construction, 1961 - 1970	170	17.26%
Period of construction, 1971 - 1980	275	27.92%
Period of construction, 1981 - 1990	230	23.35%
Period of construction, 1991 - 2001	215	21.83%
Total number of private dwellings constructed	985	100.00%

Source: Statistics Canada 2001 Census (numbers may not add up due to rounding)

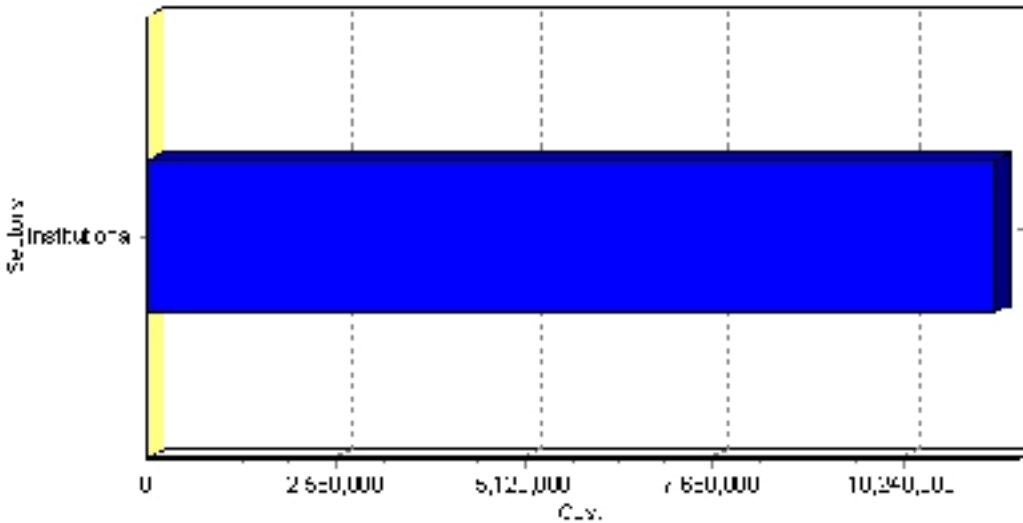
Projects

Summary of Projects in Lac La Biche as of December 2008

Project Sector	Number of Projects	Project Cost
Institutional	1	\$11,500,000
Total	1	\$11,500,000

This inventory lists projects in Alberta that have recently been completed, are under construction, or are proposed to start construction. Not all projects are listed due to reasons of confidentiality and/or due to information not being available at the time of printing. Project data is obtained from public information sources, where possible, this data has been verified with the project proponent/developer, users of the Inventory may wish to confirm project data with the proponent/developer. The inventory does not breakdown project expenditures by any given year. The cost of a project is the value of expenditures expected over all phases of project construction, which may span over two or more years. Cost of projects listed in the Inventory are estimated values only. Source: Alberta Employment, Immigration and Industry.

Value of Projects by Sector (as of December 2008)



Project Status	Number of Projects	Project Cost
Announced	1	\$11,500,000
Total	1	\$11,500,000

This inventory lists projects in Alberta that have recently been completed, are under construction, or are proposed to start construction. Not all projects are listed due to reasons of confidentiality and/or due to information not being available at the time of printing. Project data is obtained from public information sources, where possible, this data has been verified with the project proponent/developer, users of the Inventory may wish to confirm project data with the proponent/developer. The inventory does not breakdown project expenditures by any given year. The cost of a project is the value of expenditures expected over all phases of project construction, which may span over two or more years. Cost of projects listed in the Inventory are estimated values only. Source: Alberta Employment, Immigration and Industry.

Largest Projects in Lac La Biche as of December 2008

Company Name	Project Description	Project Location	Project Cost	Construction Schedule	Status
Alberta Seniors and Community Supports / Greater North Foundation	Seniors' Affordable Supportive Living Units, LacAlta Lodge	Lac la Biche	\$11,500,000	2009-2010	Announced

Disclaimer: Information in this profile has been provided from a variety of external sources. AlbertaFirst.com Ltd. provides this template, and each community posts their own content within the template. If you find inaccuracies or information you feel needs changing, please contact the community directly. Although every effort has been made to ensure the accuracy, currency and reliability of the content and data, AlbertaFirst.com Ltd. accepts no responsibility in this regard.

© AlbertaFirst.com Ltd., 2009.