

Sedgewick

Google Map



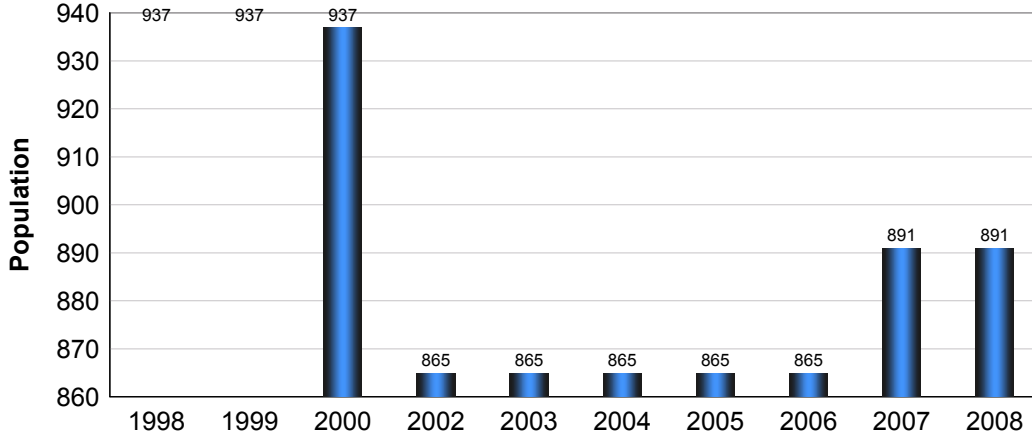
Disclaimer: Information in this profile has been provided from a variety of external sources. AlbertaFirst.com Ltd. provides this template, and each community posts their own content within the template. If you find inaccuracies or information you feel needs changing, please contact the community directly. Although every effort has been made to ensure the accuracy, currency and reliability of the content and data, AlbertaFirst.com Ltd. accepts no responsibility in this regard.

©AlbertaFirst.com Ltd., 2010.

A chart or table in this Profile may be blank. This will occur if there was no data available for that community for the specified time period

Municipal Population

Total Population - Sedgewick

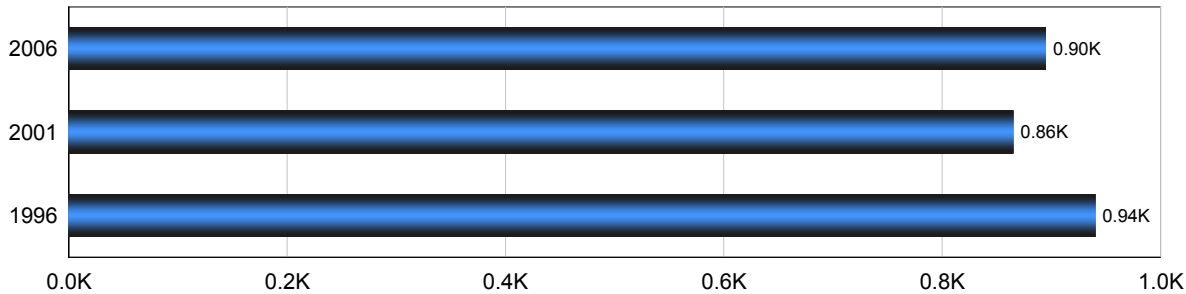


Year	Community Growth	Alberta Growth
2008	0.00%	2.37%
2007	3.01%	3.39%
2006	0.00%	1.95%
2005	0.00%	3.91%
2004	0.00%	0.95%
2003	0.00%	1.34%
2001	(7.68)%	4.02%
2000	0.00%	2.15%
1999	0.00%	3.24%
1998	0.00%	1.33%

Source: Statistics Canada 2007.
Sedgewick, Alberta. 2006 Community Profiles. 2006 Census.
Statistics Canada Catalogue no. 92-591-XWE. Ottawa. Released March 13, 2007.

Population

Total Population - Sedgewick

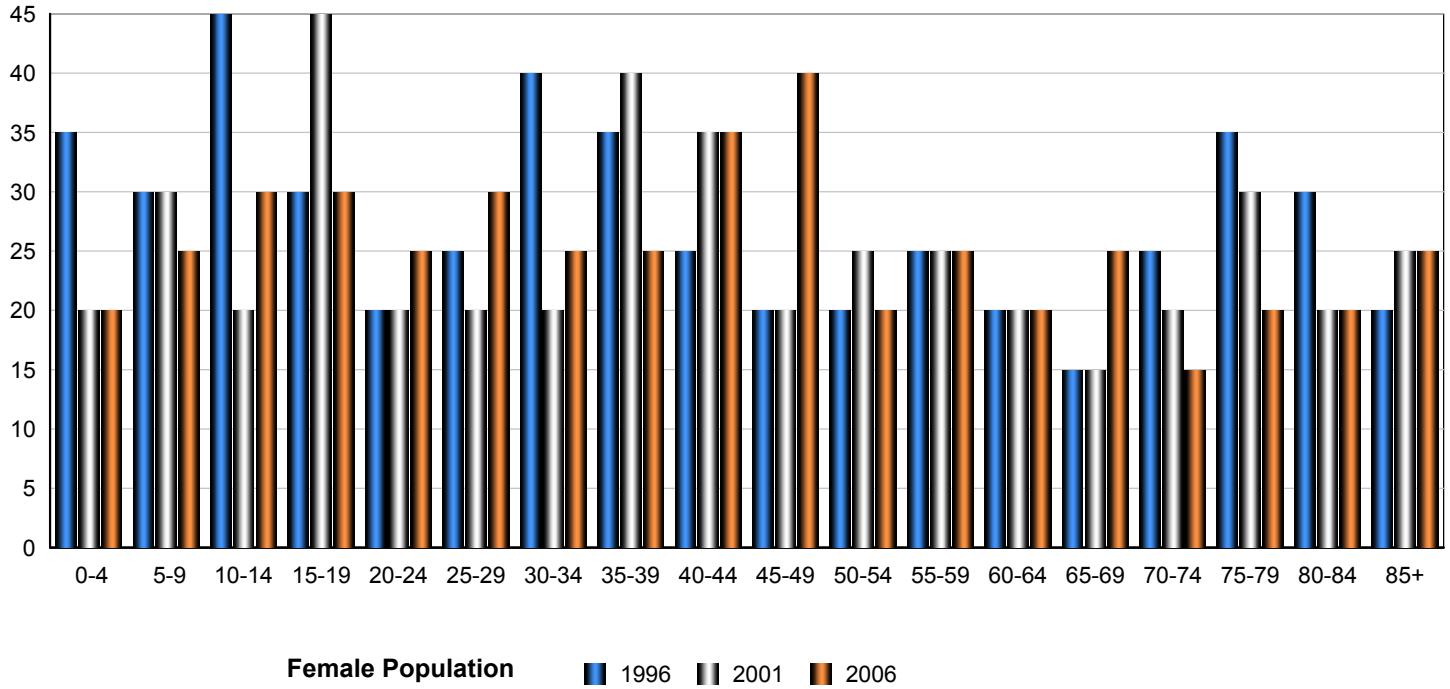


Census Year	Total Population	% Change
2006	895	3.00%
2001	865	7.70%
1996	940	7.20%

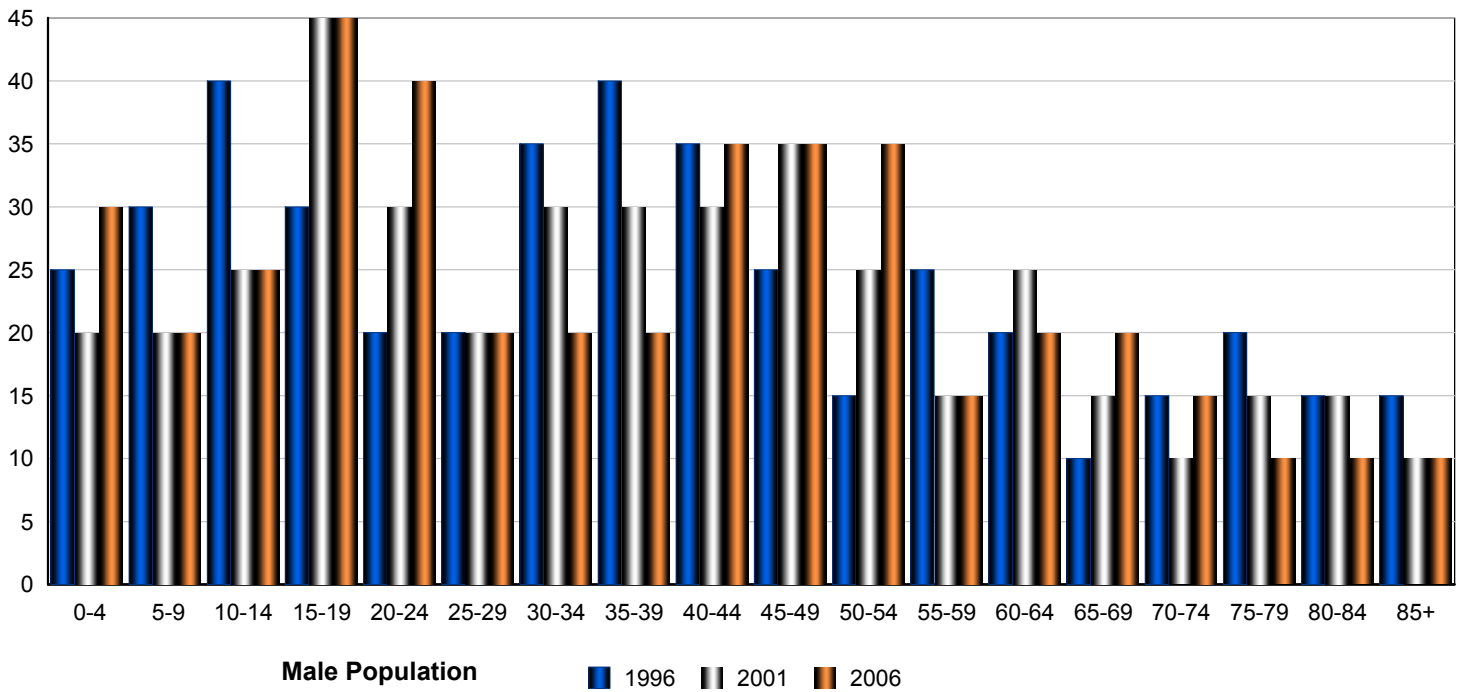
Source: Statistics Canada 2007.
Sedgewick, Alberta. 2006 Community Profiles. 2006 Census.
Statistics Canada Catalogue no. 92-591-XWE. Ottawa. Released March 13, 2007.

Total Population by Gender and Age - Sedgewick

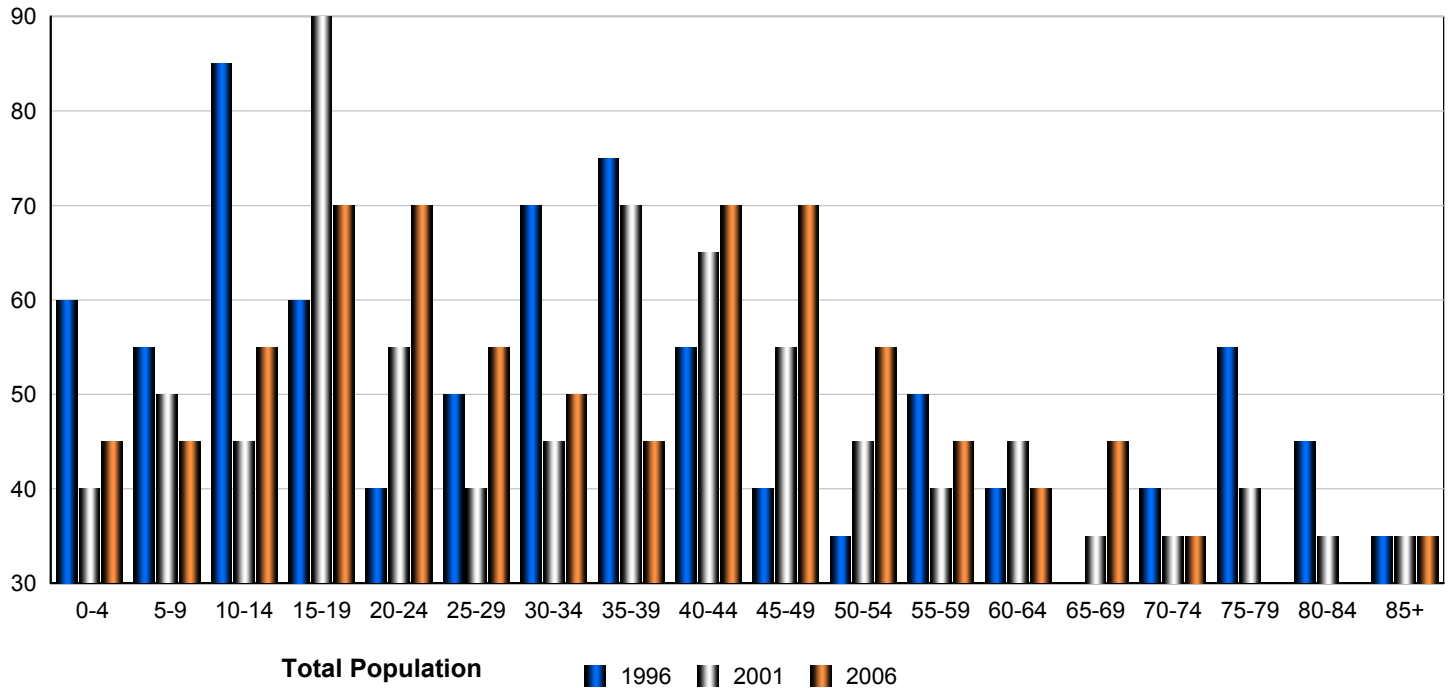
Census Population by Gender - Sedgewick



Census Population by Gender - Sedgewick



Census Population by Gender - Sedgewick



	Male			Female			Total		
	2006	2001	1996	2006	2001	1996	2006	2001	1996
0-4	30	20	25	20	20	35	50	40	60
5-9	20	20	30	25	30	30	45	50	60
10-14	25	25	40	30	20	45	55	45	85
15-19	45	45	30	30	45	30	75	90	60
20-24	40	30	20	25	20	20	65	50	40
25-29	20	20	20	30	20	25	50	40	45
30-34	20	30	35	25	20	40	45	50	75
35-39	20	30	40	25	40	35	45	70	75
40-44	35	30	35	35	35	25	70	65	60
45-49	35	35	25	40	20	20	75	55	45
50-54	35	25	15	20	25	20	55	50	35
55-59	15	15	25	25	25	25	40	40	50
60-64	20	25	20	20	20	20	40	45	40
65-69	20	15	10	25	15	15	45	30	25
70-74	15	10	15	15	20	25	30	30	40
75-79	10	15	20	20	30	35	30	45	55
80-84	10	15	15	20	20	30	30	35	45
85-89	10	10	15	25	25	20	35	35	35
Total	425	415	435	455	450	495	880	865	930

Source: Statistics Canada 2007.
 Sedgewick, Alberta. 2006 Community Profiles. 2006 Census.
 Statistics Canada Catalogue no. 92-591-XWE. Ottawa. Released March 13, 2007.

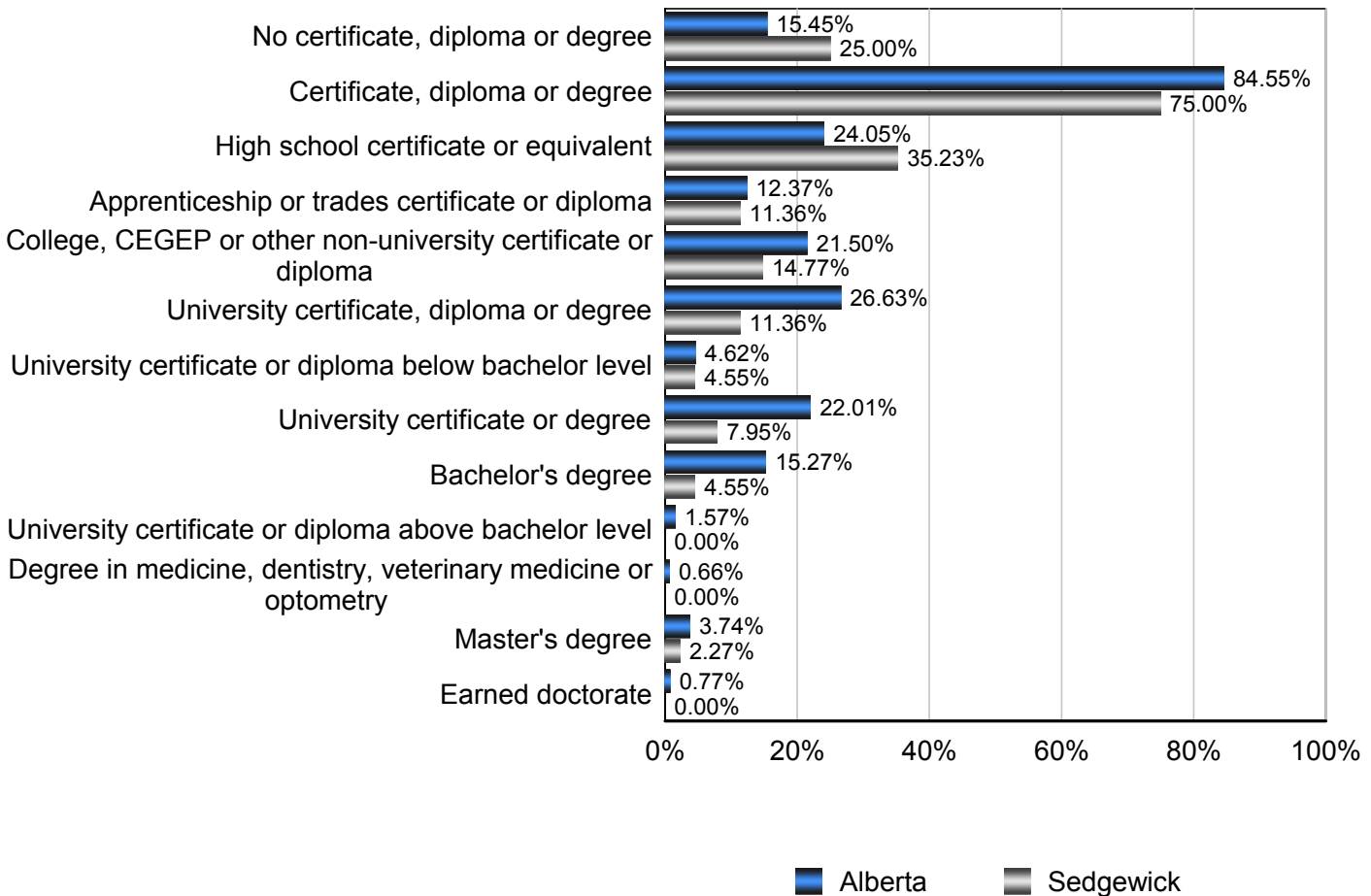
Education Statistics

Highest Level of Schooling, Population Aged 25-64 - Sedgewick (2006)

% of Population Aged 25-64

Highest Level of Schooling	Sedgewick	Alberta
No certificate, diploma or degree	25.00%	15.45%
Certificate, diploma or degree	75.00%	84.55%
High school certificate or equivalent	35.23%	24.05%
Apprenticeship or trades certificate or diploma	11.36%	12.37%
College, CEGEP or other non-university certificate or diploma	14.77%	21.50%
University certificate, diploma or degree	11.36%	26.63%
University certificate or diploma below bachelor level	4.55%	4.62%
University certificate or degree	7.95%	22.01%
Bachelor's degree	4.55%	15.27%
University certificate or diploma above bachelor level	0.00%	1.57%
Degree in medicine, dentistry, veterinary medicine or optometry	0.00%	0.66%
Master's degree	2.27%	3.74%
Earned doctorate	0.00%	0.77%

Amount by Which the Highest Level of Schooling - Sedgewick vs Provincial Average (2006)



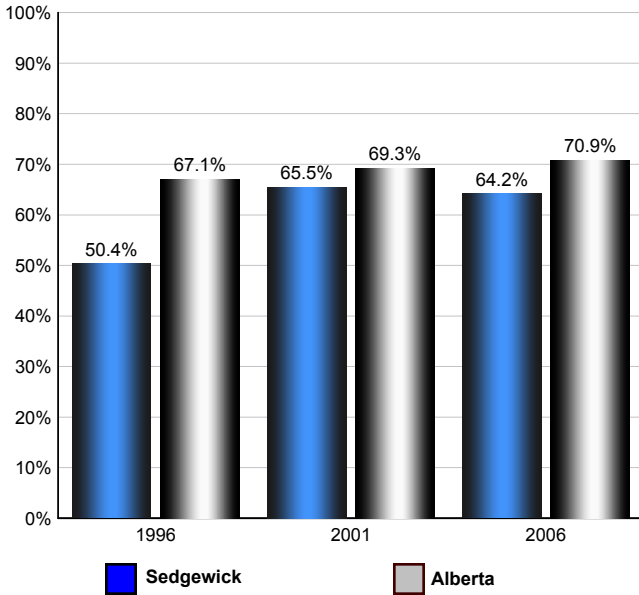
Source: Statistics Canada 2007.

Alberta, Alberta. 2006 Community Profiles. 2006 Census. Statistics Canada Catalogue no. 92-591-XWE. Ottawa. Released March 13, 2007.

Labour Force

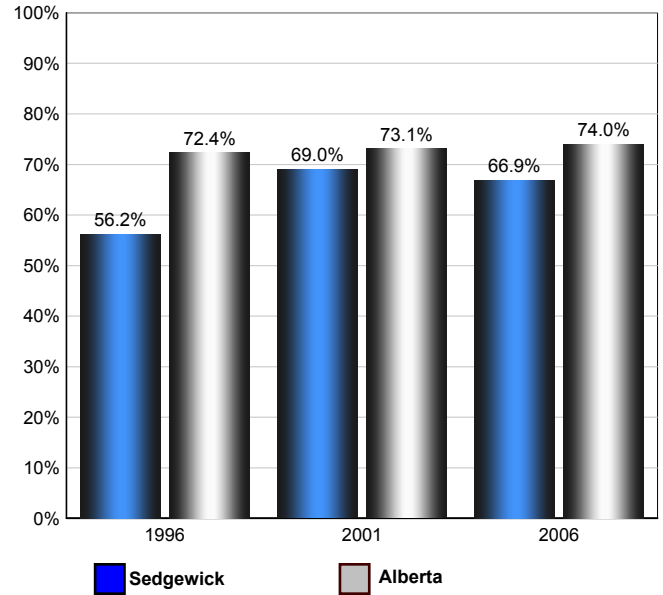
Annual Labour Force Activity Rates - Sedgewick vs Alberta

Employment Rate



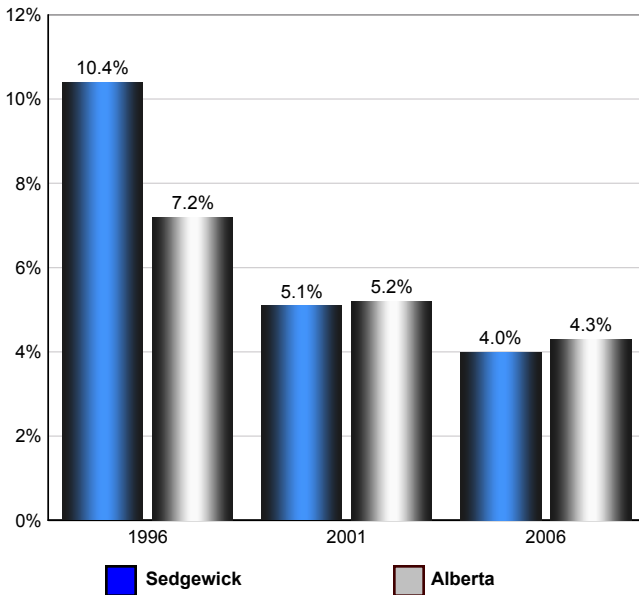
Employment Rate is calculated by dividing the total employed by the total population 15 and over

Participation Rate



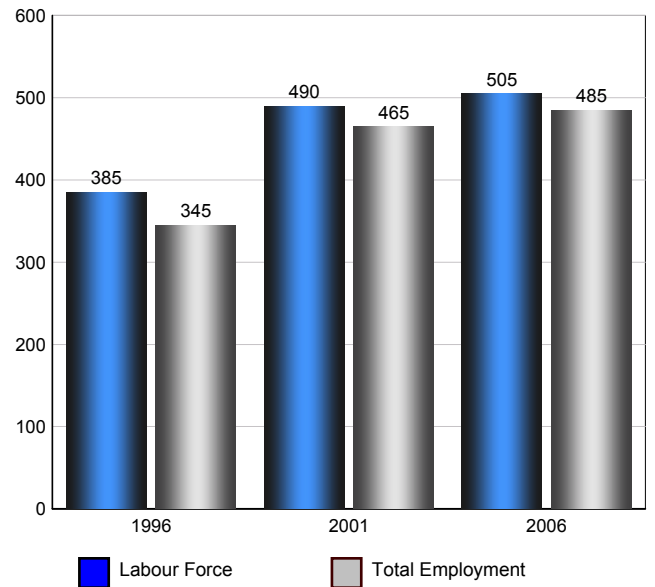
The Participation rate is calculated by summing together the number employed and unemployed and dividing the result by the total population aged 15 and over

Unemployment Rate



The Unemployment rate is calculated by dividing the total number of persons in the labour force that are reported as being unemployed by the total labour force.

Sedgewick Labour Force and Total Employment (Age 15 and over)



Source: Statistics Canada 2007. Sedgewick, Alberta. 2006 Community Profiles. 2006 Census. Statistics Canada Catalogue no. 92-591-XWE. Ottawa. Released March 13, 2007.

Labour Force Age 15+ - Sedgewick (2006)

Industry by Gender

Industry	Males	Females	Total
Agriculture, Forestry, Fishing and Hunting	15	10	25
Mining, Oil and Gas Extraction	85	0	85
Utilities	0	0	0
Construction	65	10	75
Manufacturing	30	0	30
Wholesale Trade	10	0	10
Retail Trade	10	10	20
Transportation and Warehousing	0	0	0
Information and Cultural Industries	0	0	0
Finance and Insurance	0	10	10
Real Estate, Rental and Leasing	0	0	0
Professional, Scientific and Technical Services	15	0	15
Management of Companies and Enterprises	0	0	0
Administrative and Support, Waste Management and Remediation Services	0	0	0
Educational services	0	15	15
Health care and social assistance	0	60	60
Arts, Entertainment and Recreation	0	0	0
Accommodation and Food Services	25	75	100
Other Services (except Public Administration)	25	15	40
Public Administration	10	0	10
Total	290	205	495

Source: Statistics Canada 2007.
Sedgewick, Alberta. 2006 Community Profiles. 2006 Census.
Statistics Canada Catalogue no. 92-591-XWE. Ottawa. Released March 13, 2007.

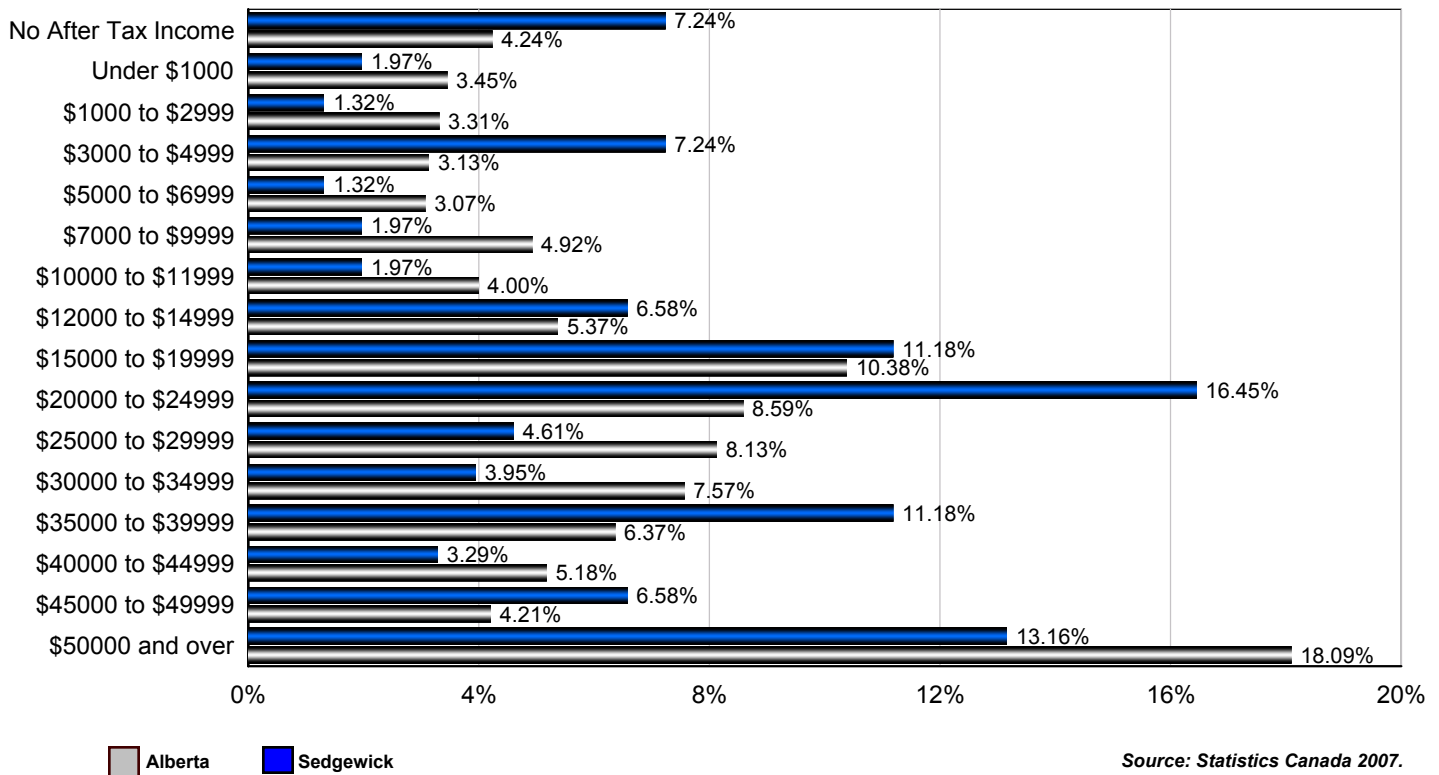
Occupation by Gender

Occupation	Males	Females	Total
Management Occupations	0	10	10
Business, Finance and Administration Occupations	10	40	50
Natural and Applied Sciences and Related Occupations	0	0	0
Health Occupations	0	35	35
Occupations in Social Science, Education, Government Service	10	30	40
Occupations in Art, Culture, Recreation and Sport	0	0	0
Sales and Service Occupations	25	105	130
Trades, Transport and Equipment Operators and Related Occupations	140	0	140
Occupations Unique to Primary	70	0	70
Occupations Unique to Processing, Manufacturing and Utilities	25	0	25
Total	280	220	500

Source: Statistics Canada 2007.
Sedgewick, Alberta. 2006 Community Profiles. 2006 Census.
Statistics Canada Catalogue no. 92-591-XWE. Ottawa. Released March 13, 2007.

Income

Percent of Population 15+ by Income Bracket - Sedgewick vs Alberta (2005)



Source: Statistics Canada 2007.
Sedgewick, Alberta. 2006 Community Profiles. 2006 Census.
Statistics Canada Catalogue no. 92-591-XWE. Ottawa. Released March 13, 2007.

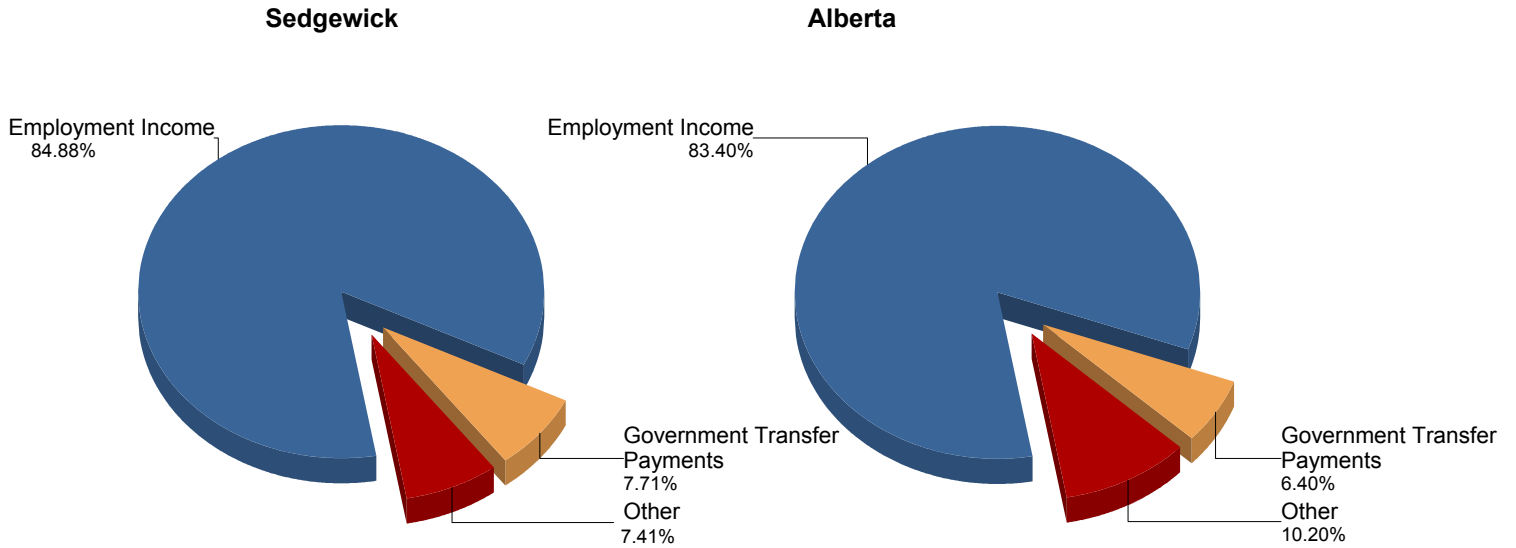
Population 15+ by Total After Tax Income - Sedgewick (2005)

	Males	Females	Total
Without After-Tax Income	15	45	60
Under \$1,000	0	15	15
\$1,000 to \$2,999	0	10	10
\$3,000 to \$4,999	0	50	50
\$5,000 to \$6,999	0	0	0
\$7,000 to \$9,999	0	10	10
\$10,000 to \$11,999	0	10	10
\$12,000 to \$14,999	15	35	50
\$15,000 to \$19,999	40	35	75
\$20,000 to \$24,999	45	80	125
\$25,000 to \$29,999	10	30	40
\$30,000 to \$34,999	20	0	20
\$35,000 to \$39,999	65	25	90
\$40,000 to \$44,999	25	0	25
\$45,000 to \$49,999	35	15	50
\$50,000 and over	85	15	100
Total	365	390	760

Due to rounding consolidating the shown income brackets may lead to errors. Such errors would be most pronounced for small communities.

Source: Statistics Canada 2007.
Sedgewick, Alberta. 2006 Community Profiles. 2006 Census.
Statistics Canada Catalogue no. 92-591-XWE. Ottawa. Released March 13, 2007.

Composition of Family Income for Economic Families - Sedgewick vs Alberta (2005)



Economic family total income - The total income of an economic family is the sum of the total incomes of all members of that family.

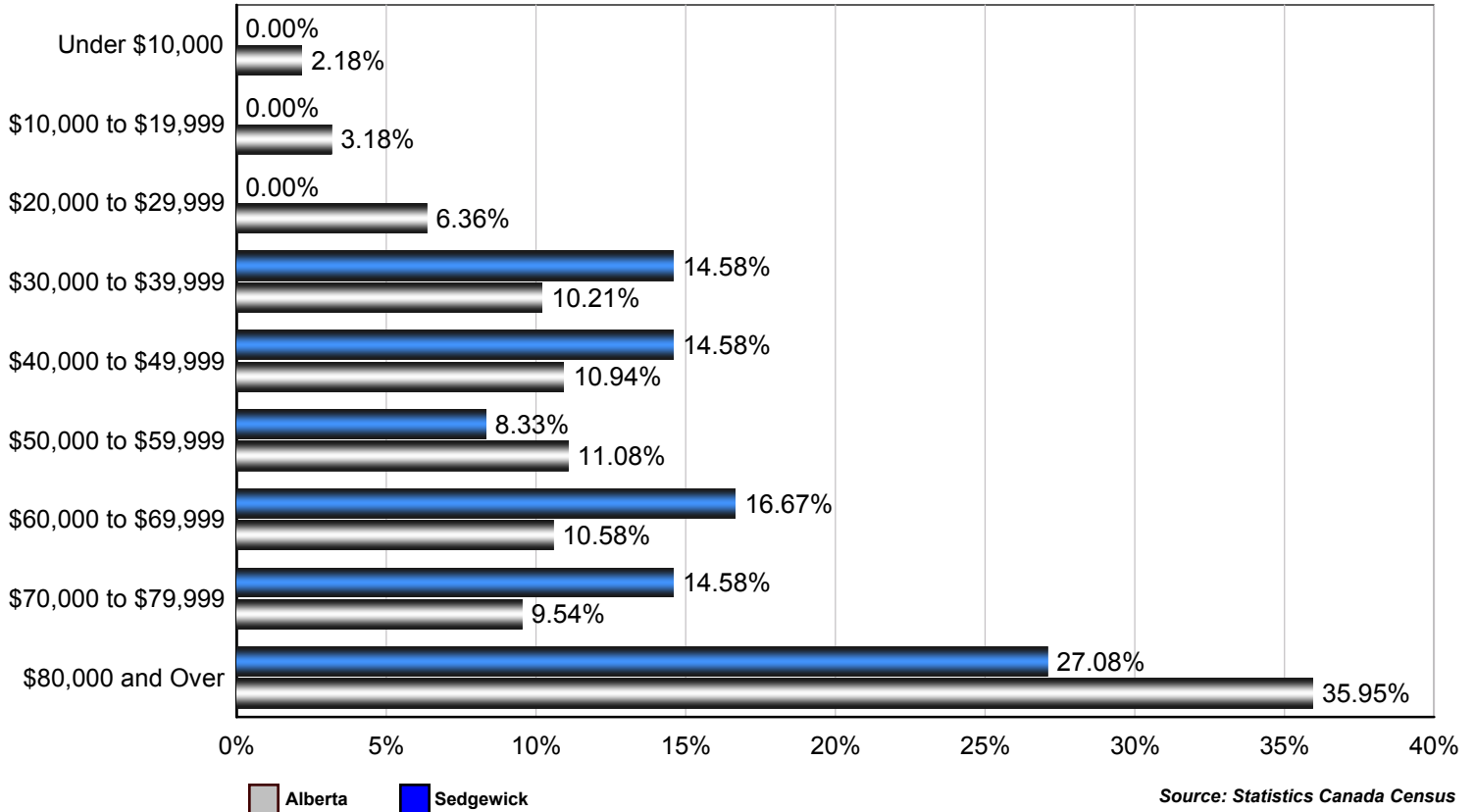
Source: Statistics Canada 2007.
Sedgewick, Alberta. 2006 Community Profiles. 2006 Census.
Statistics Canada Catalogue no. 92-591-XWE. Ottawa. Released March 13, 2007.

Population 15+ With Employment Earnings - Sedgewick (2005)

	Males	Females	Total
Earnings - As a % of total Earnings	88%	64%	75%
Median Employment Earnings	\$43,680	\$20,067	\$27,266
Average Employment Earnings	\$43,953	\$21,957	\$34,354

Source: Statistics Canada 2007.
Sedgewick, Alberta. 2006 Community Profiles. 2006 Census.
Statistics Canada Catalogue no. 92-591-XWE. Ottawa. Released March 13, 2007.

Percent of Total Economic Families by After-tax Income Brackets - Sedgewick vs Alberta (2005)



Number of Economic Families by After-tax Income Brackets - Sedgewick (2005)

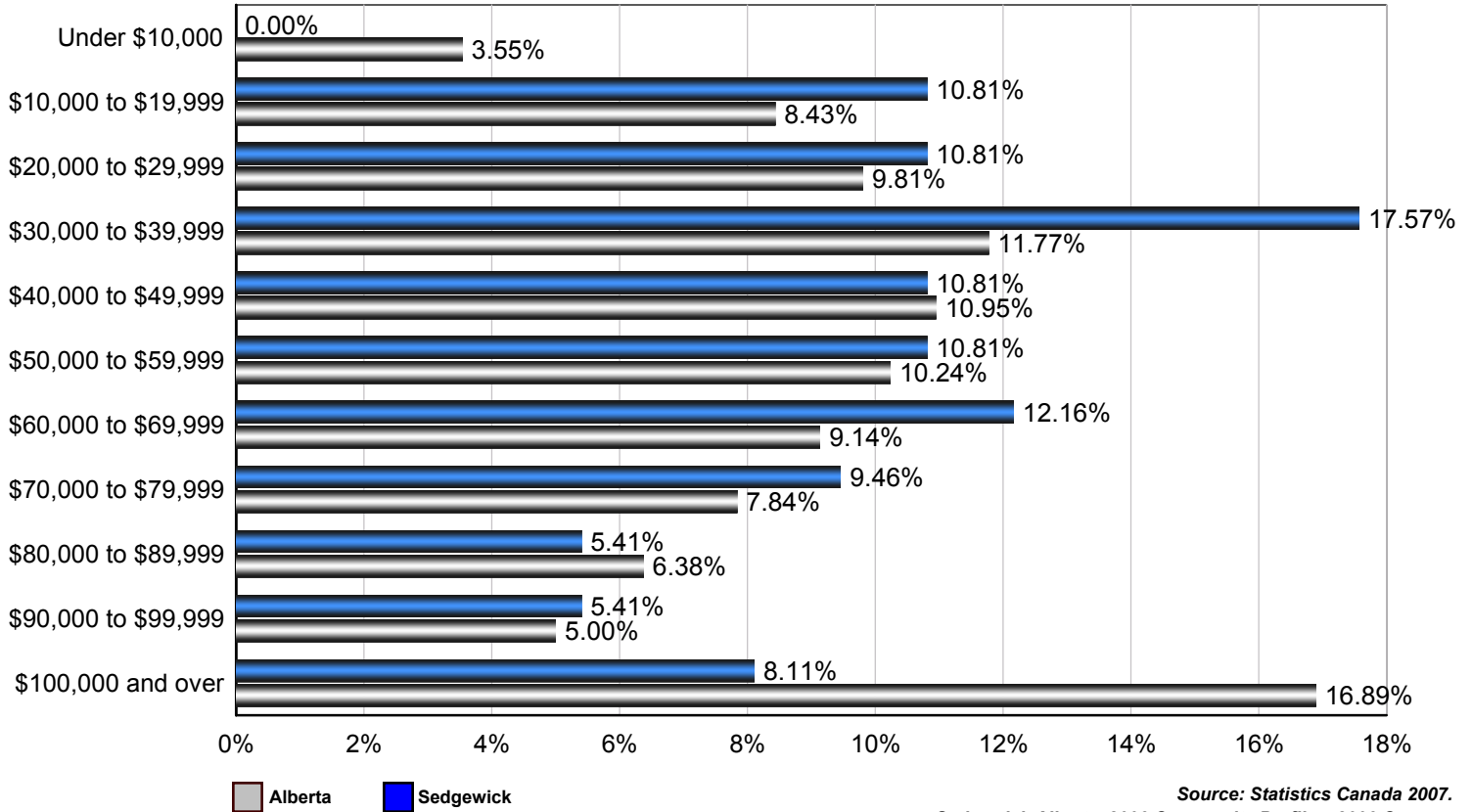
Income Bracket	Number of Families
Under \$10,000	0
\$10,000 to \$19,999	0
\$20,000 to \$29,999	0
\$30,000 to \$39,999	35
\$40,000 to \$49,999	35
\$50,000 to \$59,999	20
\$60,000 to \$69,999	40
\$70,000 to \$79,999	35
\$80,000 and over	65
Total	240

Family Income	
Median After-Tax Family Income	\$65,758
Average After-Tax Family Income	\$67,287

Due to rounding consolidating the shown income brackets may lead to errors. Such errors would be most pronounced for small communities.

Source: Statistics Canada 2007.
Sedgewick, Alberta. 2006 Community Profiles. 2006 Census.
Statistics Canada Catalogue no. 92-591-XWE. Ottawa. Released March 13, 2007.

Percent of Total Private Households by After-tax Income Brackets - Sedgewick vs Alberta (2005)



Source: Statistics Canada 2007.
Sedgewick, Alberta. 2006 Community Profiles. 2006 Census.
Statistics Canada Catalogue no. 92-591-XWE. Ottawa. Released March 13, 2007.

Number of Private Households by After-tax Income Brackets - Sedgewick (2005)

Income Bracket	Number of Families
Under \$10,000	0
\$10,000 to \$19,999	40
\$20,000 to \$29,999	40
\$30,000 to \$39,999	65
\$40,000 to \$49,999	40
\$50,000 to \$59,999	40
\$60,000 to \$69,999	45
\$70,000 to \$79,999	35
\$80,000 to \$89,999	20
\$90,000 to \$99,999	20
\$100,000 and Over	30
Total	370

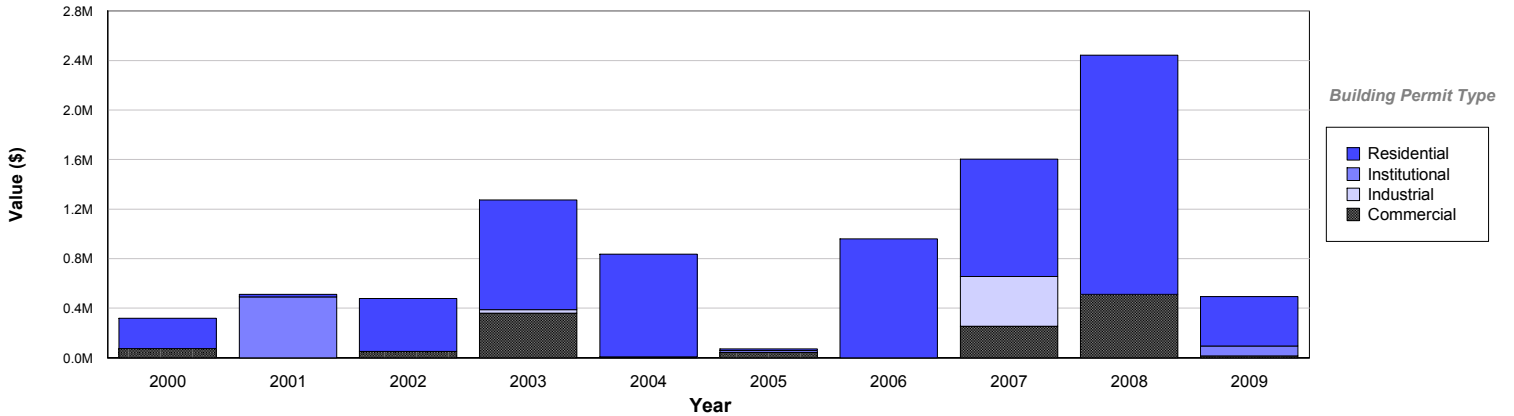
Family Income	
Median After-Tax Family Income	\$51,201
Average After-Tax Family Income	\$56,365

Due to rounding consolidating the shown income brackets may lead to errors. Such errors would be most pronounced for small communities.

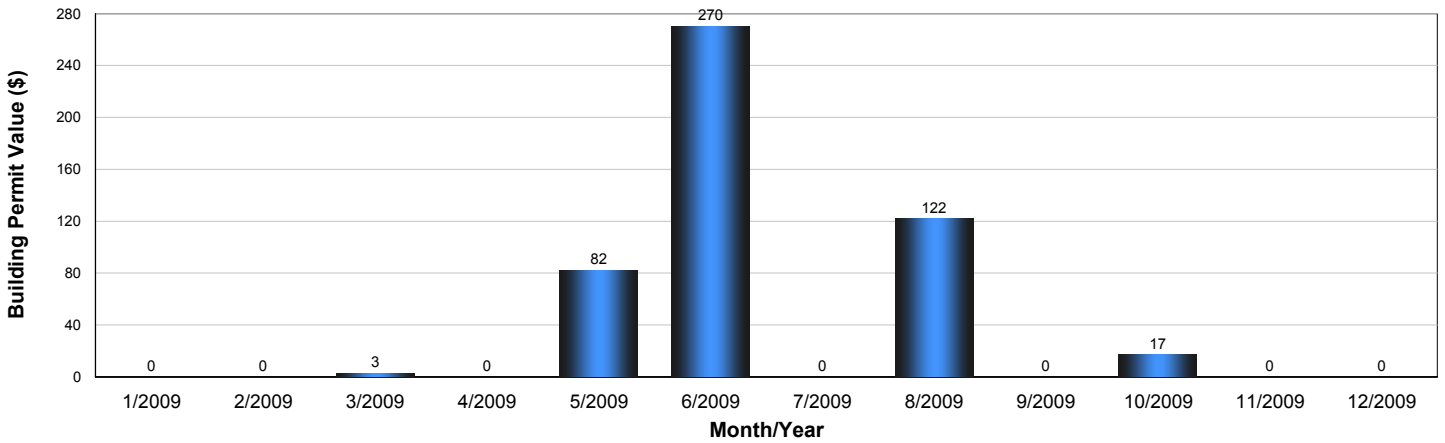
Source: Statistics Canada Census

Building Permits

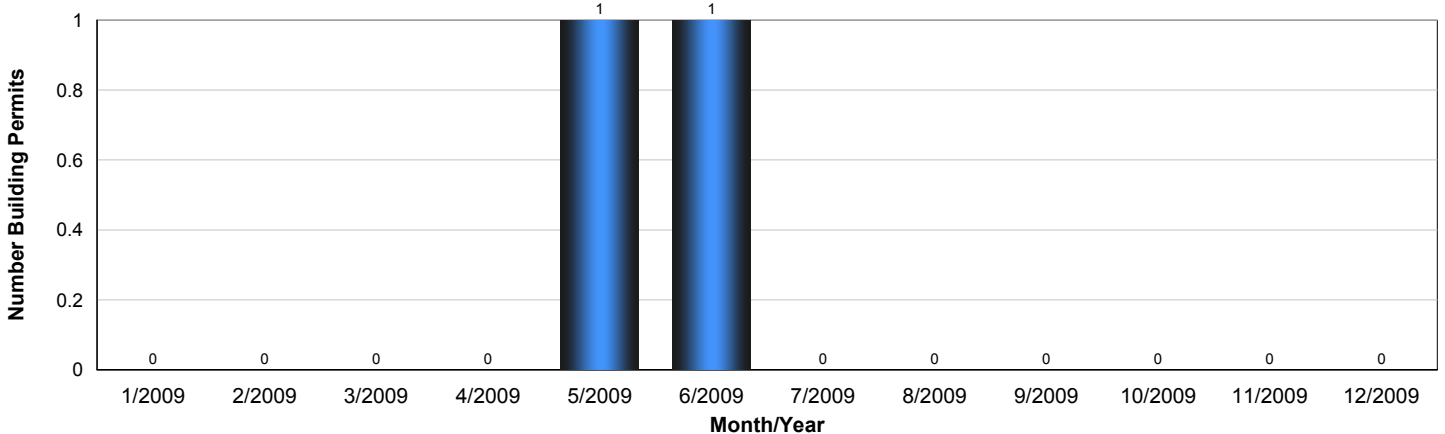
Value of Building Permits - Sedgewick



Year	Residential	Industrial	Commercial	Institutional	Total
2009	\$400,000	\$0	\$14,000	\$80,000	\$494,000
2008	\$1,932,000	\$0	\$511,000	\$0	\$2,443,000
2007	\$948,000	\$400,000	\$255,000	\$0	\$1,603,000
2006	\$959,000	\$0	\$0	\$0	\$959,000
2005	\$14,000	\$0	\$43,000	\$15,000	\$72,000
2004	\$831,000	\$0	\$0	\$6,000	\$837,000
2003	\$886,000	\$30,000	\$359,000	\$0	\$1,275,000
2002	\$427,000	\$0	\$50,000	\$0	\$477,000
2001	\$21,000	\$0	\$0	\$490,000	\$511,000
2000	\$245,000	\$0	\$74,000	\$0	\$319,000



Number of Building Permits - Sedgewick

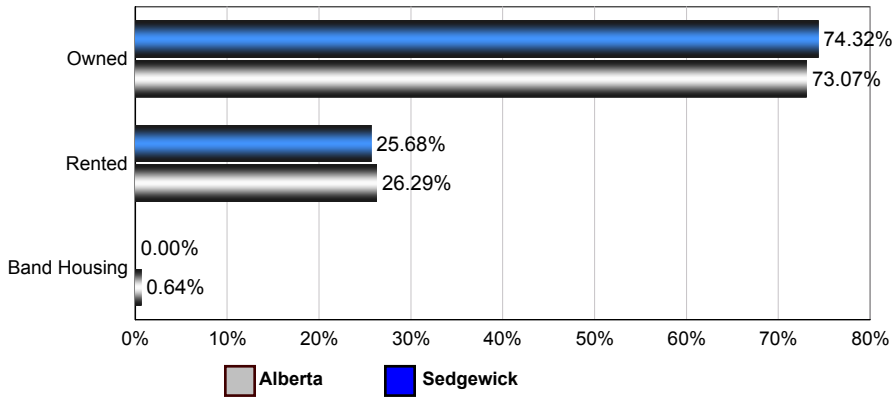


Source: Statistics Canada, Building Permits / Permis de bâtir, Publication 64-001-XWF, 2000 - 2009.

Dwellings

Number of Occupied Private Dwellings by Ownership - Sedgewick

Sedgewick vs Alberta (2006)



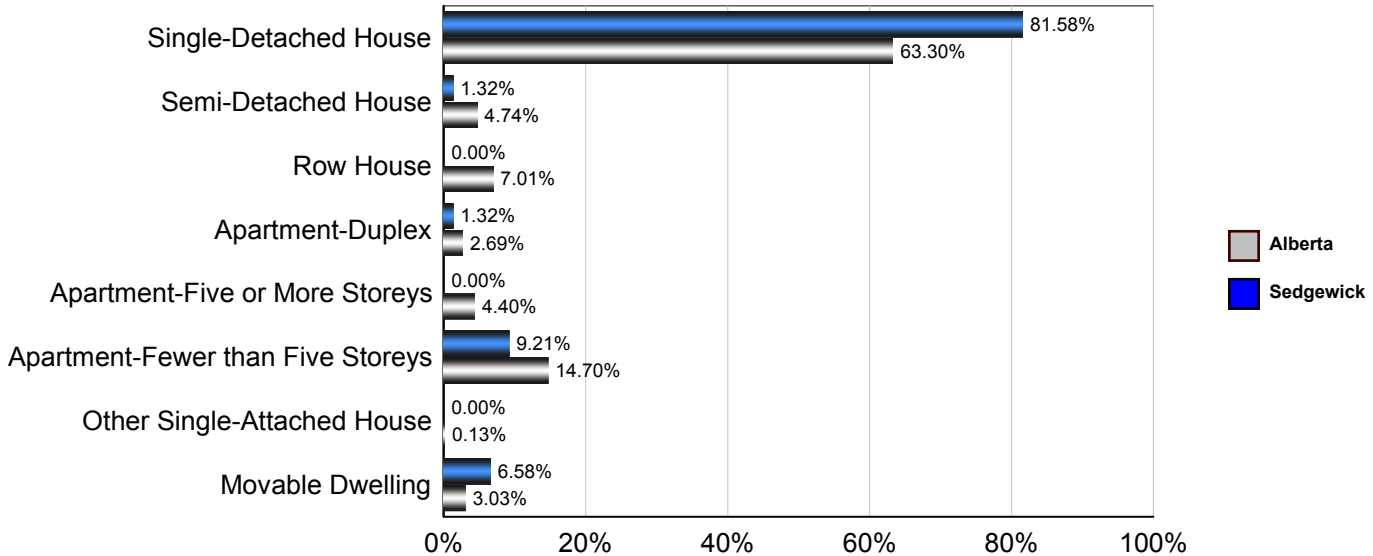
Sedgewick

	1996	2001	2006
Owned	290	300	275
Rented	80	65	95
Band Housing	0	0	0
Total	370	365	370

Source: Statistics Canada 2007.
Sedgewick, Alberta. 2006 Community Profiles. 2006 Census.
Statistics Canada Catalogue no. 92-591-XWE. Ottawa. Released March 13, 2007.

Number of Occupied Private Dwellings by Structural Type - Sedgewick

Sedgewick vs Alberta (2006)



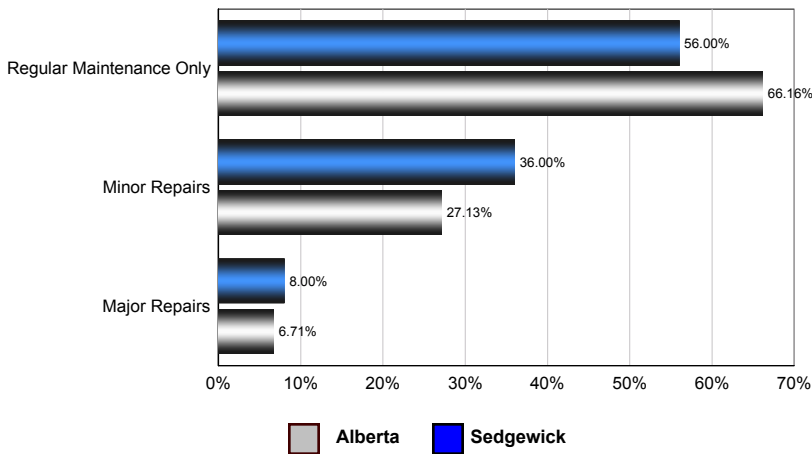
Sedgewick

	1996	2001	2006
Single-Detached House	345	320	310
Semi-Detached House	0	5	5
Row House	0	0	0
Apartment - Duplex	0	0	5
Apartment - Five or More Storeys	0	0	0
Apartment - Fewer than Five Storeys	20	25	35
Other Single-Attached House	0	0	0
Movable Dwelling	0	5	25
Total	365	355	380

Source: Statistics Canada 2007.
Sedgewick, Alberta. 2006 Community Profiles. 2006 Census.
Statistics Canada Catalogue no. 92-591-XWE. Ottawa. Released March 13, 2007.

Number of Occupied Private Dwellings by the Condition of Dwelling - Sedgewick

Sedgewick vs Alberta (2006)



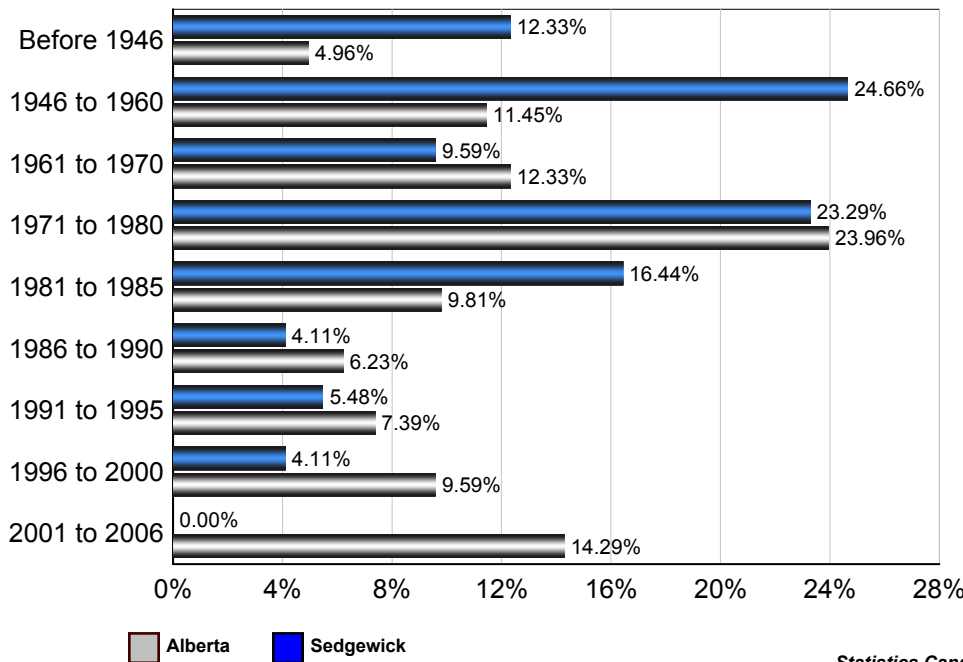
Sedgewick

	1996	2001	2006
Regular Maintenance Only	245	250	210
Minor repairs	105	100	135
Major repairs	15	10	30
Total	365	360	375

Source: Statistics Canada 2007.
Sedgewick, Alberta. 2006 Community Profiles. 2006 Census.
Statistics Canada Catalogue no. 92-591-XWE. Ottawa. Released
March 13, 2007.

Number of Occupied Private Dwellings by Period of Construction - Sedgewick

Sedgewick vs Alberta (2006)



Sedgewick

	2006
Before 1946	45
1946 to 1960	90
1961 to 1970	35
1971 to 1980	85
1981 to 1985	60
1986 to 1990	15
1991 to 1995	20
1996 to 2000	15
2001 to 2006	0
Total	365

Source: Statistics Canada 2007.
Sedgewick, Alberta. 2006 Community Profiles. 2006 Census.
Statistics Canada Catalogue no. 92-591-XWE. Ottawa. Released March 13, 2007.

