

# Andrew

## Welcome

Welcome to the Village of Andrew. I am so proud to be the mayor of such a warm community filled with both history and heritage. Walk down our streets and be greeted by the residents. Located as the midway point, we are only an hour from both the cities and numerous lakes, so it does not matter if you are visiting or staying forever, Andrew is right for you! Check out our world's largest mallard duck, or visit our historic sites. Our grain elevator and Railway museum should not be missed. Stop for some bowling, or a gym workout at the village office, or take in a round of mini golf. We also welcome many campers to our R.V. park and ball diamonds. You can curl at the rink or skate at the arena, there is plenty for everyone! With camping, a hotel, and a bed and breakfast, we have room for all. Throughout the year we host numerous annual activities from sport off, garlic festivals, corn roasts, perogy suppers, balls and dances, to curling and ball tournaments or hockey games. Please stop by the village office anytime for more information and find out why Andrew is the best kept secret in Alberta!

yours truly,

Mayor Tina Warawa

## Area Overview

Settlement of the Andrew area was influenced by such historic events as the Palliser Expedition in 1858, the Northwest Rebellion in 1885 and the homestead immigrations starting in the 1890's. The first settlers in the area were Metis, followed by the Scots. In 1893 Andrew Whitford, after whom the Village was named, was given a Military Homestead. The wave of Ukrainian homesteaders started in 1897 and continued for many years. In 1930 the Village of Andrew was incorporated with Mr. T.J. Maticuk as its first Mayor.

Today, Andrew is a viable and vibrant community. It boasts of modern commercial and residential areas with all amenities, reflecting the slogan which appears on the Village crest, "Development for the Future".

## Location

The Village of Andrew is located in the County of Lamont #30, on Highway 45 in east-central Alberta. It is 60 km northeast of Fort Saskatchewan and 105 km northeast of Edmonton.

## Economic Base

The economic base of the Andrew area is mixed farming and natural gas. Products made in the area include sand/gravel, natural gas, cereal crops, hogs, and poultry.

## Economic Facts

Andrew is in an area that is in a booming and we are currently seeing interested developers. This year we had the opening of a few new businesses, one commercial factory, and 5 new housing projects. We are looking forward to see this community flourish!

## Utilities

### Electrical Power

ATCO Electric  
6502 - 55 Avenue  
Vegreville, Alberta  
T0B 4L0  
Tel: 780-632-2844

### Natural Gas

ATCO Gas  
10035-105 Street  
Edmonton, Alberta  
T5J 2B6  
Tel: 1-888-511-7550

### Telephone

Telus  
P.O. Box 2525 Stn M  
Calgary, AB

### Water Supply

Andrew receives its treated water supply from the City of Edmonton Rosedale Water Treatment Plant. The reservoir capacity is 143,000 gallons [650 cubic metres] and the line pressure is 30-40 lbs. Consumption is approximately 40,000 gallons per day [180 cubic metres].

### Waste Management

Sewage treatment is provided by a series of lagoons consisting of 4 short and 2 long detention ponds.

## Taxation

	<u>Residential/Farmland</u>	<u>Non-Residential</u>
<u>2005</u>		
Municipal Tax Rate	20.4330	21.4300
Education - Alberta School Foundation Fund Tax Rate	4.4160	6.5480
Seniors Lodge Accommodation Tax Rate	.4149	.4149

### Mill Rates [1999]

- Residential - Public 27.50
- Residential - Separate N/A
- Non-Residential - Public 31.458
- Non-Residential - Separate N/A

## Transportation

### Air Services

The nearest commercial and air freight services are at Edmonton International and Edmonton Municipal Airports. There are also numerous landing strip and community flying clubs in close neighbouring communities.

### Rail Services

Andrew was served by the Canadian Pacific Railway [Lloydminster to Edmonton]. While the line no longer exists a rail trail now takes its place.

### Highways

Connecting highways are Highway 45 [Aurora Way], leading west to Fort Saskatchewan via Highway 15 and east to Highway 41, and Secondary Highway 855, leading south to Highway 16 [Yellowhead Highway]. 855 connects directly to highway 29.

### Trucking Firms

- ASL Carriers
- Shulko & Sons

### Bus Services

Quality Tours runs a service Monday to Friday to and from Edmonton.

### Couriers and Taxis

Loomis Courier, Purolator Courier

## Community Lifestyle

### Recreation

Local recreational facilities include a Recreation/Fitness Centre [bowling alley, sauna, hot tub, fitness room with equipment], tennis court, mini-golf, Arena [hockey, figure skating, curling], 2 playgrounds, the Andrew Community Centre Association, bingo, and a Public Library.

### Community Organizations

Community organizations include the Agricultural Society, Lions/Lionesses, Andrew & District Historical Archives Museum Society, Andrew Library Board, Eagle Hill Amateur Radio Club, Project Second Life, Andrew Community Centre Association, Mini Golf Club, Women's Guild Club, Ukrainian Ladies' Aid, Zoria Ukrainian Dance Club, Rainbow Club [centre for senior citizens], ball and hockey teams, figure skating and curling club.

### Religious Services

- Andrew Full Gospel

- Bissel Memorial United
- Kingdom Hall of Jehovah Witnesses
- Russo Greek Orthodox of St. Peter & St. Paul
- United Church Women

#### **Special Attractions/Annual Events**

- World's Largest Mallard
  - Caboose and Way Station
  - Andrew Museum (located in CP Station)
  - Mini Golf
  - RV Park and Campsite
  - Andrew Elevator and Interpretative Centre
  - Duck Stop Recreation and Fitness Centre
- 
- - Andrew Agricultural Society Farmers Market - every Saturday
  - Annual Garlic Festival - October 20th, 2001
  - Remembrance Day Program & Activities November 11th
  - Firefighter's Ball -
  - Andrew Country Christmas Craft Sale - Andrew Community Centre.
  - Community Wide Garage Sale - 1st Saturday in May <
  - Mother's Day Tea and Bake Sale - Andrew School- 2nd Friday in May
  - Sport-off Parade and Activities -- July 1

#### **Hospitality**

##### **Accommodation**

- Andrew Hotel

##### **Restaurants**

- Hong Kong Restaurant
- Jade Garden Restaurant

## **Education**

Andrew is part of the Elk Island Public School Regional Division #14, headquartered in Sherwood Park [Tel: 780-464-8200]. Word.

#### **Daycare/Nursery**

NA

#### **Public**

Andrew School provides education for Grades K to 12. The school provides distance education for students who wish to take high school courses that are not offered at the high school.

The school hosts annual events that include the Christmas concert, Track and Field day, Science Fair, Graduation Exercises, Winter Olympics, a Home Economics Fashion Show, and numerous field trips.

#### **Separate**

NA

#### **Private**

NA

## **Post Secondary**

Residents of Andrew have access to Athabasca University distance education programs, as well as Edmonton-based post-secondary institutions such as The University of Alberta, Grant MacEwan College and Northern Alberta Institute of Technology [NAIT].

## **Health Care**

Archer Memorial Hospital, located in Lamont, has 72 active beds, while the Auxiliary Hospital and Nursing Home has 81 beds. In addition, George McDougall Memorial and Auxiliary Hospital, located in Smoky Lake, has 10 acute care beds, 24-hour emergency services, laboratory and diagnostic imaging, and a full range of community-based services. There is also a health centre and a health unit located in Mundare and Willingdon

respectively.

Other local medical services include a physical therapist, and the Vegreville Health Unit.

## Emergency Services

### Fire Protection

Andrew is served by the Andrew Volunteer Fire Department [Tel: 780-365-3611].

### Police Services

Andrew is served by the Two Hills RCMP Detachment - Andrew Satellite Office [Tel: 780-365-3533].

### Ambulance Services

There is a Lakeland Ambulance with a base station in Andrew [Tel: 780-365-3600].

## Community Services

### Municipal

Village of Andrew  
5021 - 51 Street  
PO. Box 180  
Andrew, Alberta  
T0B 0C0  
Tel: 780-365-3687  
Fax: 780-365-2061

- Water Treatment Plant
- Municipal Library

### Provincial

N/A

### Federal

- Canada Post
- Royal Canadian Mounted Police

## Key Contacts

### Municipal

Village of Andrew  
5021 - 50 Street  
PO. Box 180  
Andrew, Alberta  
T0B 0C0  
Tel: 780-365-3687  
Fax: 780-365-2061

Tina Warawa  
Mayor

Pat Skoreyko  
Chief Administrative Officer  
[vandway@telus.net](mailto:vandway@telus.net)

### Provincial (Updated December 2004)

Alberta Economic Development  
Box 412  
Room 308, Provincial Building  
5025 - 49 Avenue  
St. Paul, Alberta  
T0A 3A4  
Tel: 780-645-6358  
Fax: 780-645-6241

Garry Krause, Regional Manager  
Maryann Robinson, Client Service Representative

Honourable Ed Stelmach, Premier  
Member of the Legislative Assembly  
Vegreville - Viking Constituency  
307 Legislature Building  
10800 97 Street  
Edmonton AB  
T5K 2B6  
Tel: 780-427-2251  
Fax: 780-427-1349

Constituency Office:  
Box 451, 4945 - 51 Avenue  
Vegreville, AB T9C 1R6  
Phone: (780) 632-6840  
Fax: (780) 632-6888  
[Vegreville.Viking@assembly.ab.ca](mailto:Vegreville.Viking@assembly.ab.ca)

**Federal (Updated June 2004)**  
Leon Benoit  
Member of Parliament [MP]  
Vegreville-Wainwright Constituency  
House of Commons  
Suite 613, Justice Building  
Ottawa, Ontario  
K1A 0A6  
Tel: 613-992-4171

Constituency Office:  
PO Box 300  
Mannville, Alberta  
T0B 2W0  
Tel: 780-763-6130  
Toll-Free in AB: 1-800-463-1194  
Fax: 780-763-6132

## Google Map



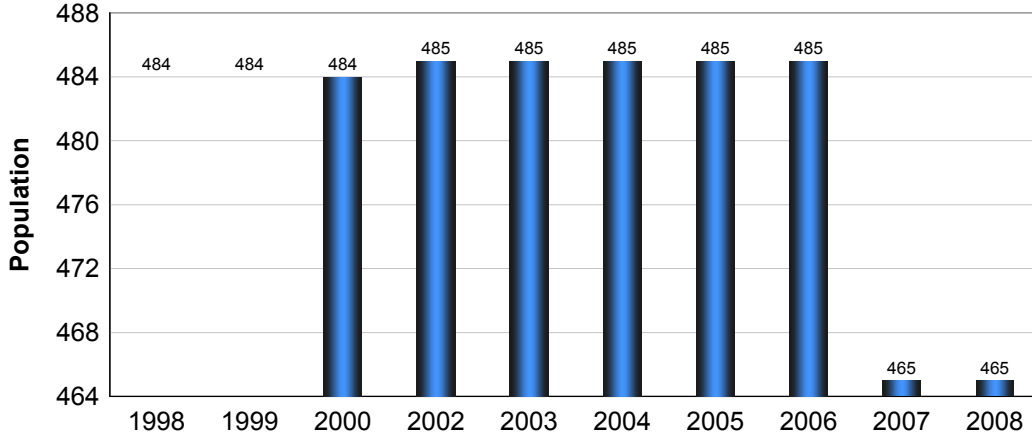
Disclaimer: Information in this profile has been provided from a variety of external sources. AlbertaFirst.com Ltd. provides this template, and each community posts their own content within the template. If you find inaccuracies or information you feel needs changing, please contact the community directly. Although every effort has been made to ensure the accuracy, currency and reliability of the content and data, AlbertaFirst.com Ltd. accepts no responsibility in this regard.

©AlbertaFirst.com Ltd., 2010.

A chart or table in this Profile may be blank. This will occur if there was no data available for that community for the specified time period

## Municipal Population

### Total Population - Andrew

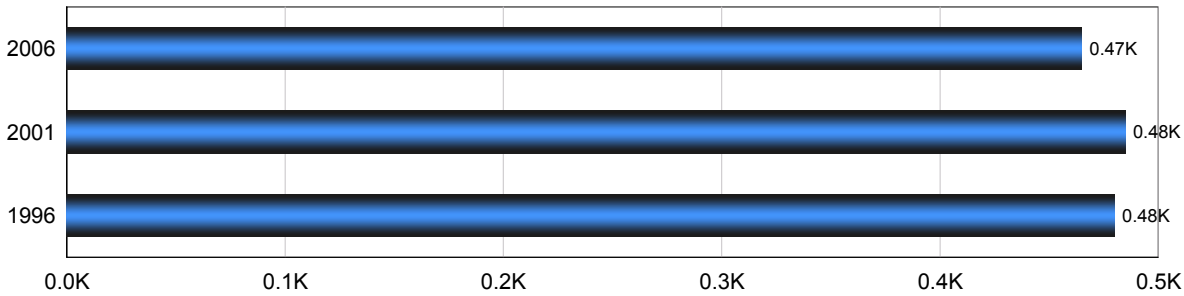


Year	Community Growth	Alberta Growth
2008	0.00%	2.37%
2007	(4.12)%	3.39%
2006	0.00%	1.95%
2005	0.00%	3.91%
2004	0.00%	0.95%
2003	0.00%	1.34%
2001	0.21%	4.02%
2000	0.00%	2.15%
1999	0.00%	3.24%
1998	0.00%	1.33%

Source: Statistics Canada 2007.  
Andrew, Alberta. 2006 Community Profiles. 2006 Census.  
Statistics Canada Catalogue no. 92-591-XWE. Ottawa. Released March 13, 2007.

## Population

### Total Population - Andrew

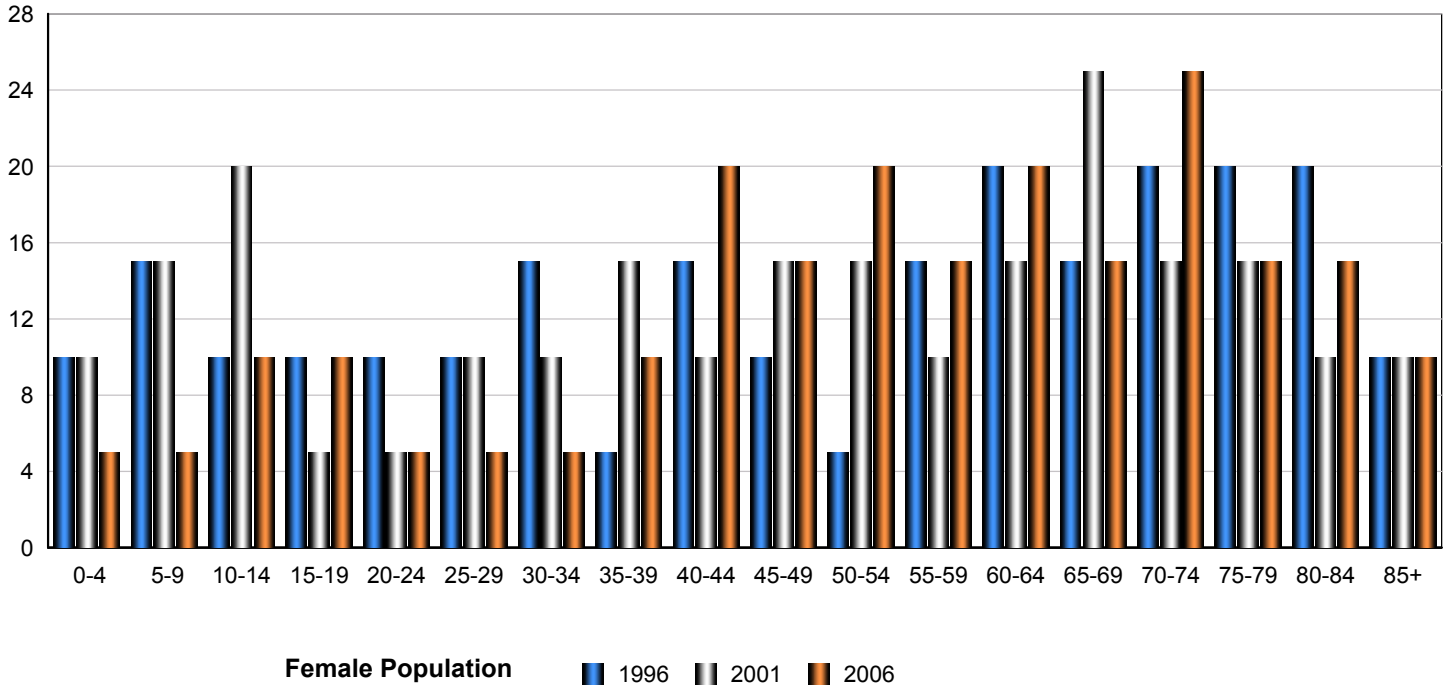


Census Year	Total Population	% Change
2006	465	4.10%
2001	485	0.20%
1996	480	6.90%

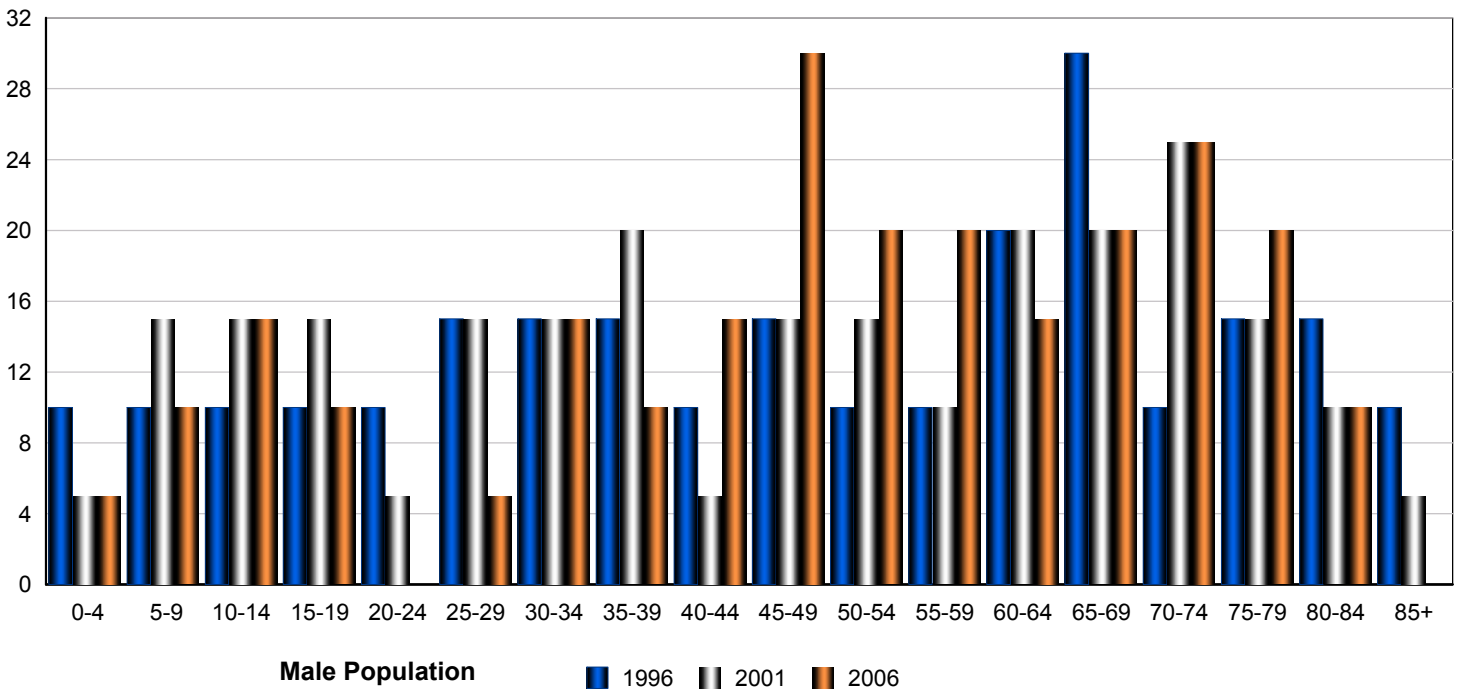
Source: Statistics Canada 2007.  
Andrew, Alberta. 2006 Community Profiles. 2006 Census.  
Statistics Canada Catalogue no. 92-591-XWE. Ottawa. Released March 13, 2007.

Total Population by Gender and Age - Andrew

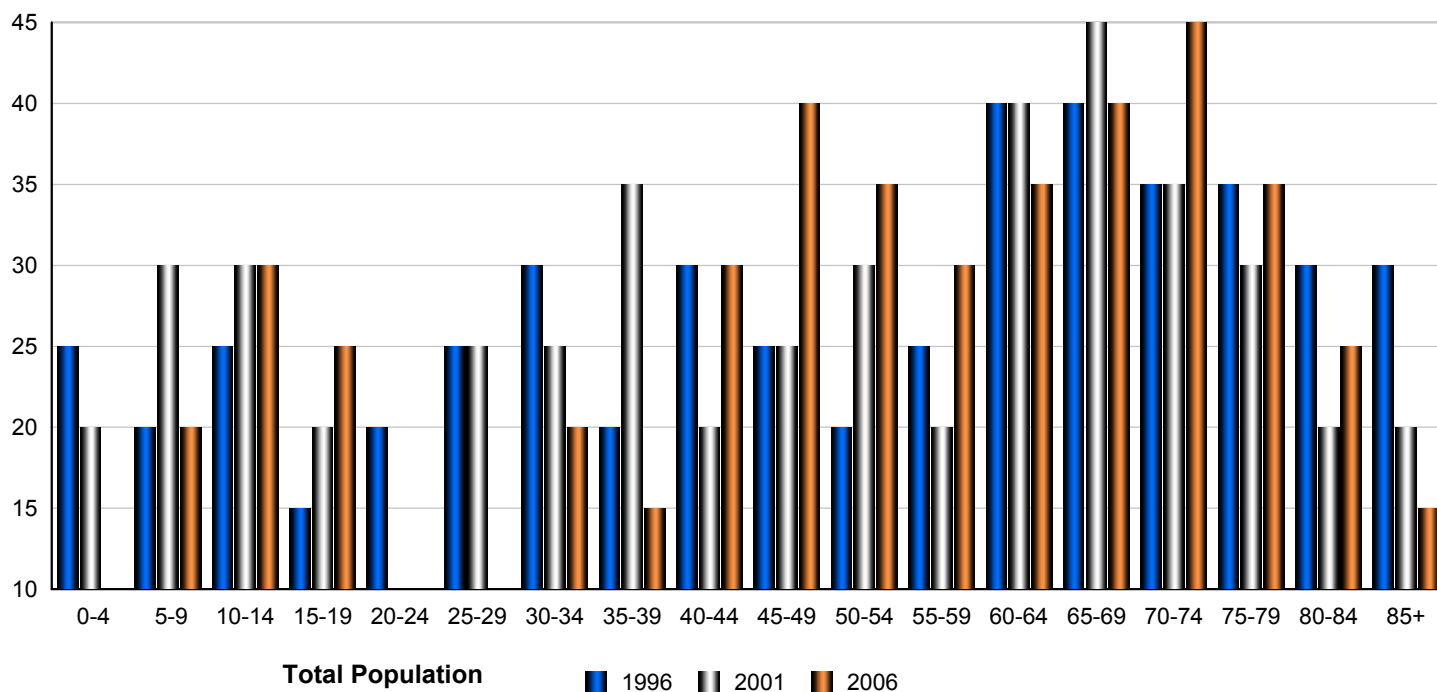
Census Population by Gender - Andrew



Census Population by Gender - Andrew



Census Population by Gender - Andrew



	Male			Female			Total		
	2006	2001	1996	2006	2001	1996	2006	2001	1996
0-4	5	5	10	5	10	10	10	15	20
5-9	10	15	10	5	15	15	15	30	25
10-14	15	15	10	10	20	10	25	35	20
15-19	10	15	10	10	5	10	20	20	20
20-24	0	5	10	5	5	10	5	10	20
25-29	5	15	15	5	10	10	10	25	25
30-34	15	15	15	5	10	15	20	25	30
35-39	10	20	15	10	15	5	20	35	20
40-44	15	5	10	20	10	15	35	15	25
45-49	30	15	15	15	15	10	45	30	25
50-54	20	15	10	20	15	5	40	30	15
55-59	20	10	10	15	10	15	35	20	25
60-64	15	20	20	20	15	20	35	35	40
65-69	20	20	30	15	25	15	35	45	45
70-74	25	25	10	25	15	20	50	40	30
75-79	20	15	15	15	15	20	35	30	35
80-84	10	10	15	15	10	20	25	20	35
85-89	0	5	10	10	10	10	10	15	20
<b>Total</b>	<b>245</b>	<b>245</b>	<b>240</b>	<b>225</b>	<b>230</b>	<b>235</b>	<b>470</b>	<b>475</b>	<b>475</b>

Source: Statistics Canada 2007.  
 Andrew, Alberta. 2006 Community Profiles. 2006 Census.  
 Statistics Canada Catalogue no. 92-591-XWE. Ottawa. Released March 13, 2007.

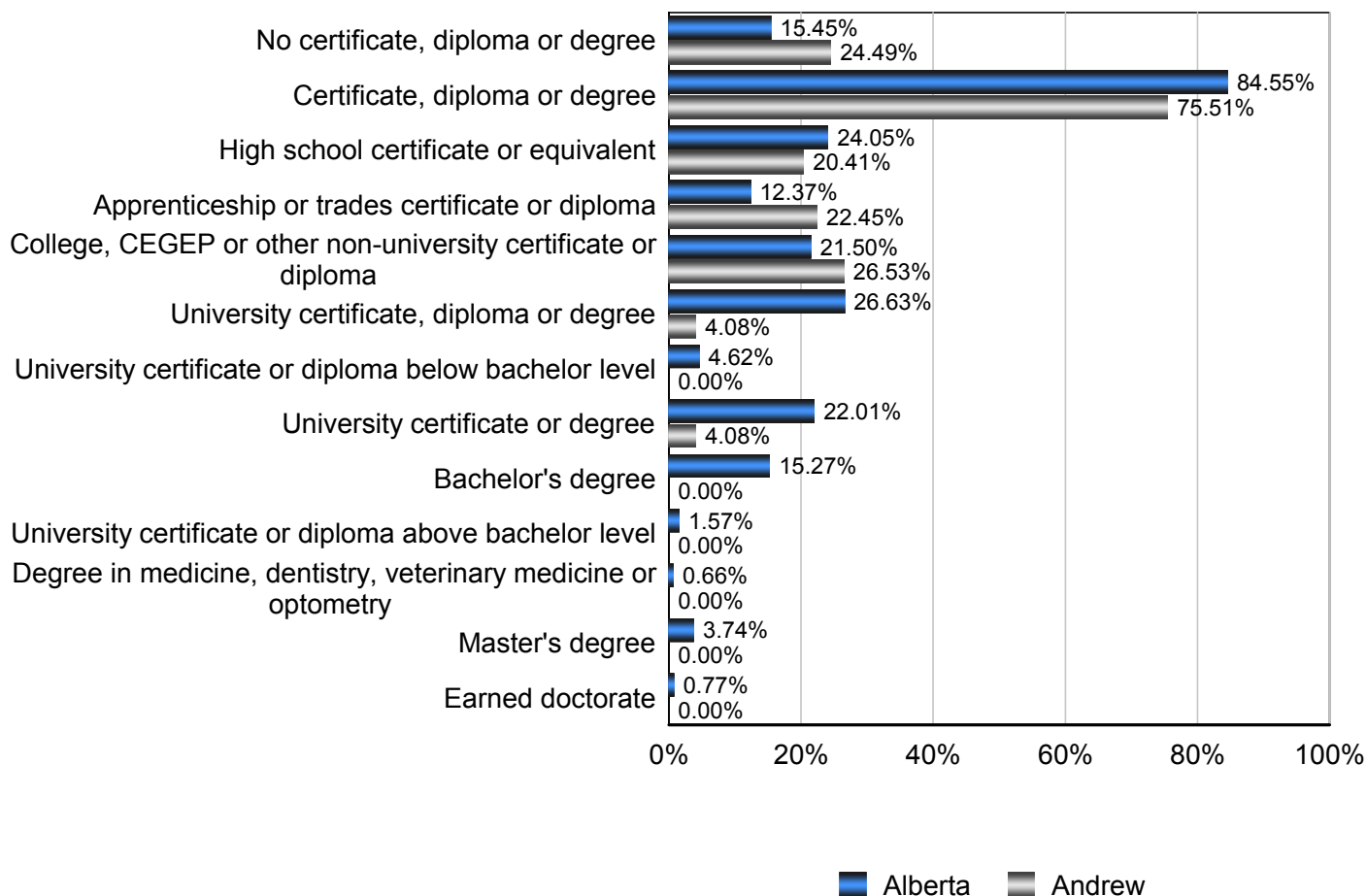
Education Statistics

Highest Level of Schooling, Population Aged 25-64 - Andrew (2006)

% of Population Aged 25-64

Highest Level of Schooling	Andrew	Alberta
No certificate, diploma or degree	24.49%	15.45%
Certificate, diploma or degree	75.51%	84.55%
High school certificate or equivalent	20.41%	24.05%
Apprenticeship or trades certificate or diploma	22.45%	12.37%
College, CEGEP or other non-university certificate or diploma	26.53%	21.50%
University certificate, diploma or degree	4.08%	26.63%
University certificate or diploma below bachelor level	0.00%	4.62%
University certificate or degree	4.08%	22.01%
Bachelor's degree	0.00%	15.27%
University certificate or diploma above bachelor level	0.00%	1.57%
Degree in medicine, dentistry, veterinary medicine or optometry	0.00%	0.66%
Master's degree	0.00%	3.74%
Earned doctorate	0.00%	0.77%

Amount by Which the Highest Level of Schooling - Andrew vs Provincial Average (2006)

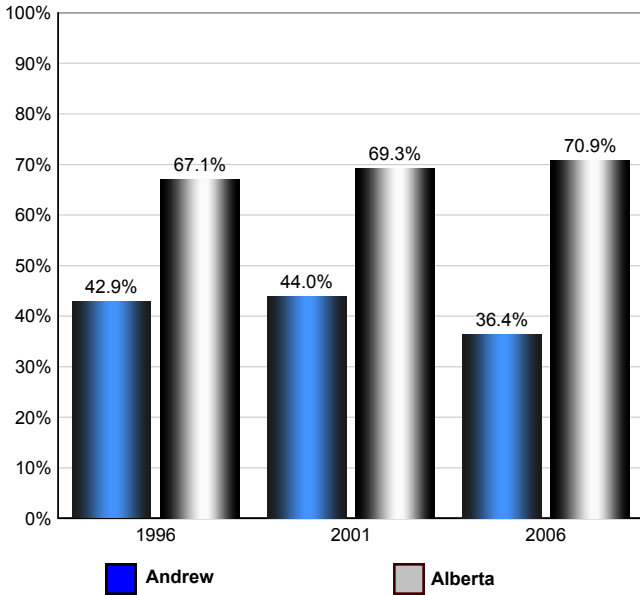


Source: Statistics Canada 2007.  
 Alberta, Alberta. 2006 Community Profiles. 2006 Census.  
 Statistics Canada Catalogue no. 92-591-XWE. Ottawa. Released March 13, 2007.

Labour Force

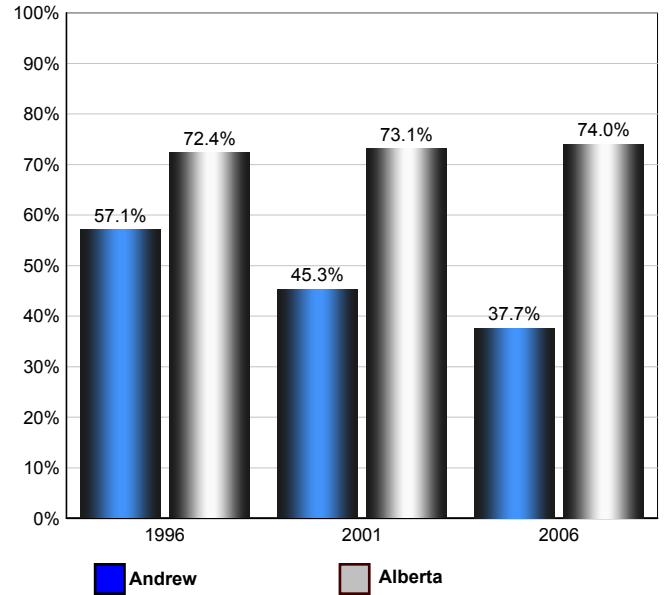
Annual Labour Force Activity Rates - Andrew vs Alberta

Employment Rate



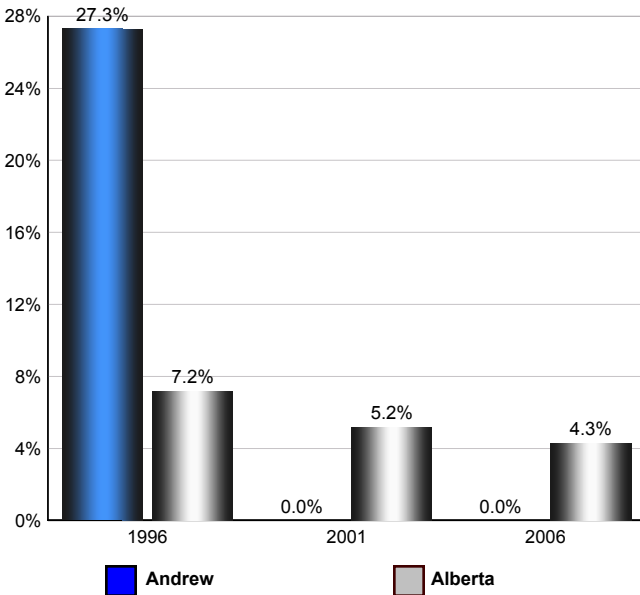
The Employment Rate is calculated by dividing the total employed by the total population 15 and over

Participation Rate



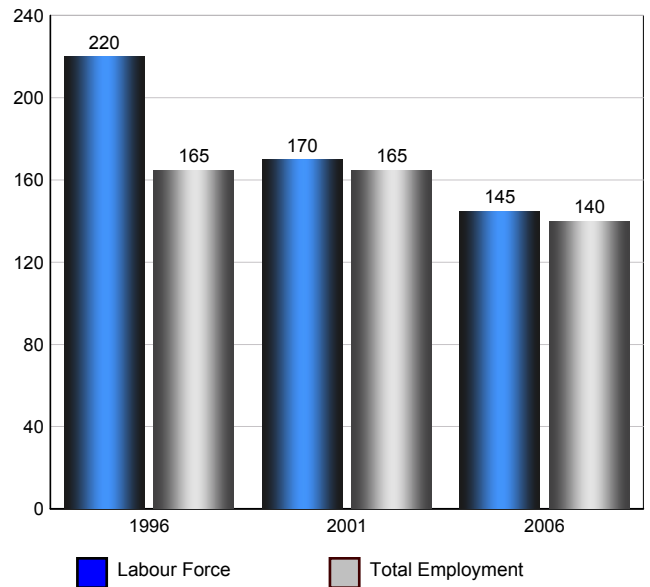
The Participation rate is calculated by summing together the number employed and unemployed and dividing the result by the total population aged 15 and over

Unemployment Rate



The Unemployment rate is calculated by dividing the total number of persons in the labour force that are reported as being unemployed by the total labour force.

Andrew Labour Force and Total Employment (Age 15+)



Source: Statistics Canada 2007. Andrew, Alberta. 2006 Community Profiles. 2006 Census. Statistics Canada Catalogue no. 92-591-XWE. Ottawa. Released March 13, 2007.

## Labour Force Age 15+ - Andrew (2006)

## Industry by Gender

Industry	Males	Females	Total
Agriculture, Forestry, Fishing and Hunting	0	0	0
Mining, Oil and Gas Extraction	0	0	0
Utilities	0	0	0
Construction	15	0	15
Manufacturing	30	0	30
Wholesale Trade	0	0	0
Retail Trade	15	10	25
Transportation and Warehousing	20	0	20
Information and Cultural Industries	0	0	0
Finance and Insurance	0	0	0
Real Estate, Rental and Leasing	0	0	0
Professional, Scientific and Technical Services	0	0	0
Management of Companies and Enterprises	0	0	0
Administrative and Support, Waste Management and Remediation Services	0	0	0
Educational services	0	0	0
Health care and social assistance	0	10	10
Arts, Entertainment and Recreation	0	0	0
Accommodation and Food Services	0	10	10
Other Services (except Public Administration)	10	10	20
Public Administration	0	0	0
<b>Total</b>	<b>90</b>	<b>40</b>	<b>130</b>

Source: Statistics Canada 2007.  
Andrew, Alberta. 2006 Community Profiles. 2006 Census.  
Statistics Canada Catalogue no. 92-591-XWE. Ottawa. Released March 13, 2007.

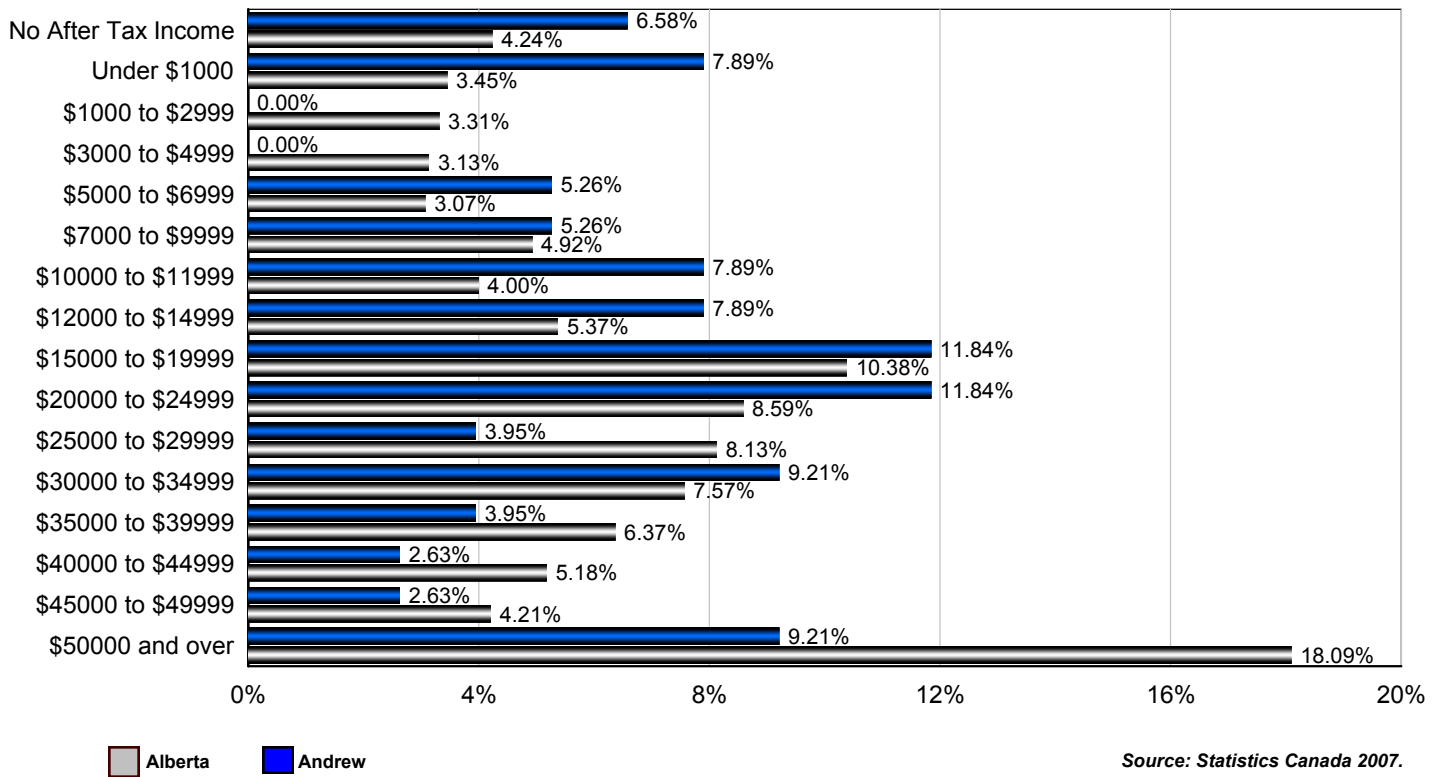
## Occupation by Gender

Occupation	Males	Females	Total
Management Occupations	10	0	10
Business, Finance and Administration Occupations	0	15	15
Natural and Applied Sciences and Related Occupations	0	0	0
Health Occupations	0	0	0
Occupations in Social Science, Education, Government Service	0	0	0
Occupations in Art, Culture, Recreation and Sport	0	0	0
Sales and Service Occupations	0	10	10
Trades, Transport and Equipment Operators and Related Occupations	70	10	80
Occupations Unique to Primary	15	0	15
Occupations Unique to Processing, Manufacturing and Utilities	10	0	10
<b>Total</b>	<b>105</b>	<b>35</b>	<b>140</b>

Source: Statistics Canada 2007.  
Andrew, Alberta. 2006 Community Profiles. 2006 Census.  
Statistics Canada Catalogue no. 92-591-XWE. Ottawa. Released March 13, 2007.

Income

Percent of Population 15+ by Income Bracket - Andrew vs Alberta (2005)



Source: Statistics Canada 2007.  
 Andrew, Alberta. 2006 Community Profiles. 2006 Census.  
 Statistics Canada Catalogue no. 92-591-XWE. Ottawa. Released March 13, 2007.

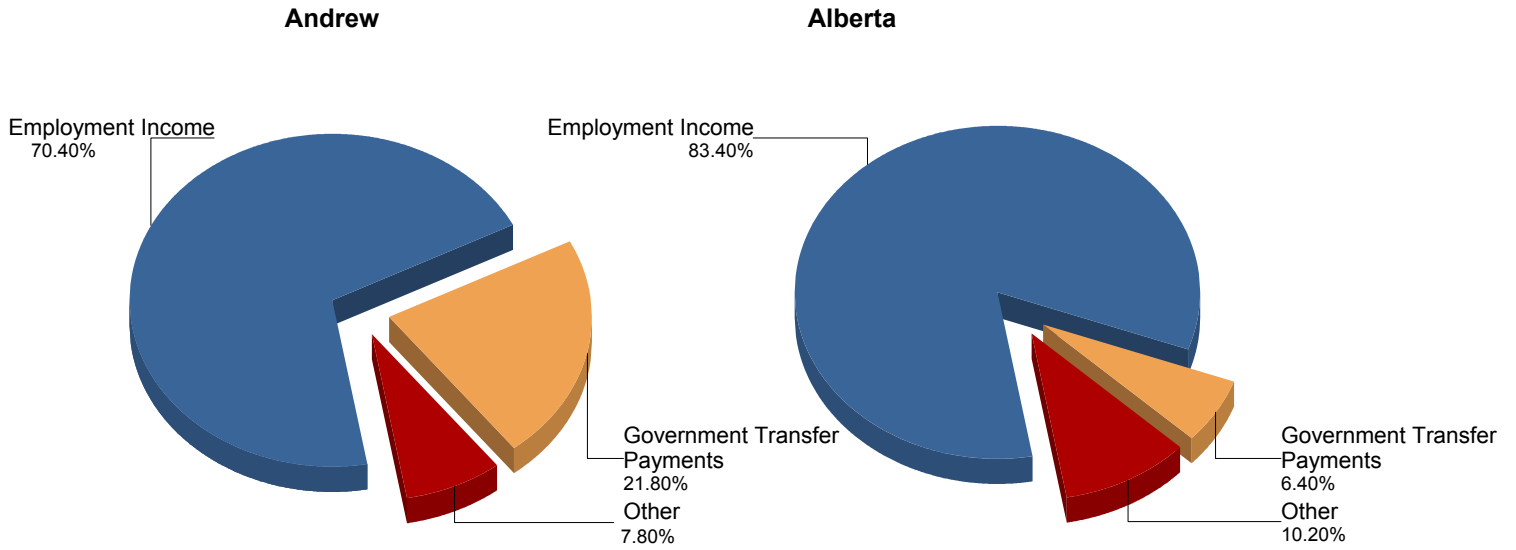
Population 15+ by Total After Tax Income - Andrew (2005)

	Males	Females	Total
Without After-Tax Income	0	20	20
Under \$1,000	25	10	35
\$1,000 to \$2,999	0	0	0
\$3,000 to \$4,999	0	0	0
\$5,000 to \$6,999	0	25	25
\$7,000 to \$9,999	10	10	20
\$10,000 to \$11,999	0	20	20
\$12,000 to \$14,999	0	20	20
\$15,000 to \$19,999	25	25	50
\$20,000 to \$24,999	25	25	50
\$25,000 to \$29,999	10	10	20
\$30,000 to \$34,999	30	10	40
\$35,000 to \$39,999	10	0	10
\$40,000 to \$44,999	10	0	10
\$45,000 to \$49,999	0	0	0
\$50,000 and over	35	0	35
<b>Total</b>	<b>205</b>	<b>185</b>	<b>380</b>

Due to rounding consolidating the shown income brackets may lead to errors. Such errors would be most pronounced for small communities.

Source: Statistics Canada 2007.  
 Andrew, Alberta. 2006 Community Profiles. 2006 Census.  
 Statistics Canada Catalogue no. 92-591-XWE. Ottawa. Released March 13, 2007.

## Composition of Family Income for Economic Families - Andrew vs Alberta (2005)



Economic family total income - The total income of an economic family is the sum of the total incomes of all members of that family.

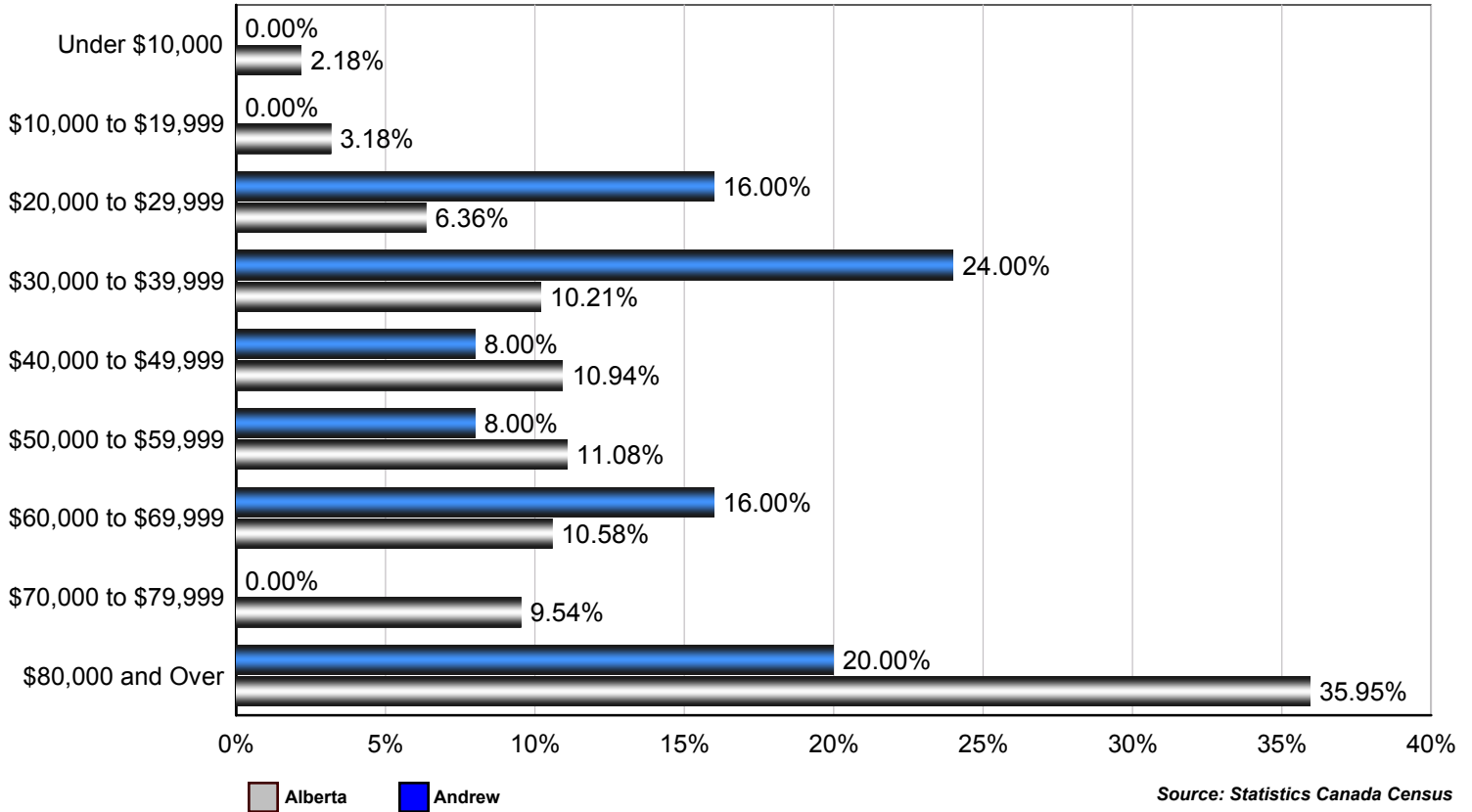
Source: Statistics Canada 2007.  
 Andrew, Alberta. 2006 Community Profiles. 2006 Census.  
 Statistics Canada Catalogue no. 92-591-XWE. Ottawa. Released March 13, 2007.

## Population 15+ With Employment Earnings - Andrew (2005)

	Males	Females	Total
Earnings - As a % of total Earnings	55%	33%	43%
Median Employment Earnings	\$47,663	\$11,929	\$35,397
Average Employment Earnings	\$51,819	\$18,549	\$40,249

Source: Statistics Canada 2007.  
 Andrew, Alberta. 2006 Community Profiles. 2006 Census.  
 Statistics Canada Catalogue no. 92-591-XWE. Ottawa. Released March 13, 2007.

## Percent of Total Economic Families by After-tax Income Brackets - Andrew vs Alberta (2005)



## Number of Economic Families by After-tax Income Brackets - Andrew (2005)

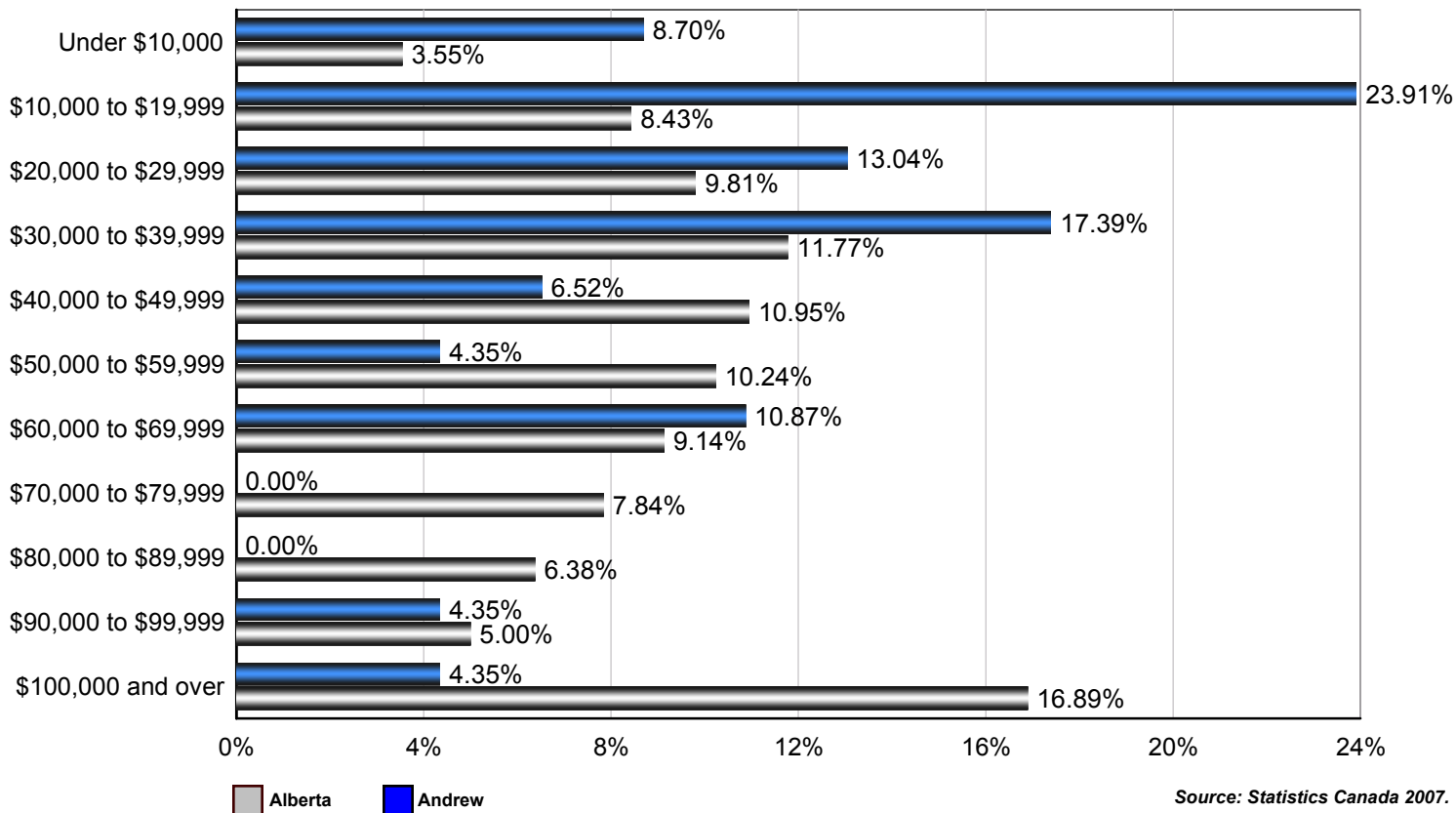
Income Bracket	Number of Families
Under \$10,000	0
\$10,000 to \$19,999	0
\$20,000 to \$29,999	20
\$30,000 to \$39,999	30
\$40,000 to \$49,999	10
\$50,000 to \$59,999	10
\$60,000 to \$69,999	20
\$70,000 to \$79,999	0
\$80,000 and over	25
<b>Total</b>	<b>125</b>

Family Income	
Median After-Tax Family Income	\$45,296
Average After-Tax Family Income	\$54,975

Due to rounding consolidating the shown income brackets may lead to errors. Such errors would be most pronounced for small communities.

Source: Statistics Canada 2007.  
 Andrew, Alberta. 2006 Community Profiles. 2006 Census.  
 Statistics Canada Catalogue no. 92-591-XWE. Ottawa. Released March 13, 2007.

## Percent of Total Private Households by After-tax Income Brackets - Andrew vs Alberta (2005)



Source: Statistics Canada 2007.  
 Andrew, Alberta. 2006 Community Profiles. 2006 Census.  
 Statistics Canada Catalogue no. 92-591-XWE. Ottawa. Released March 13, 2007.

## Number of Private Households by After-tax Income Brackets - Andrew (2005)

Income Bracket	Number of Families
Under \$10,000	20
\$10,000 to \$19,999	55
\$20,000 to \$29,999	30
\$30,000 to \$39,999	40
\$40,000 to \$49,999	15
\$50,000 to \$59,999	10
\$60,000 to \$69,999	25
\$70,000 to \$79,999	0
\$80,000 to \$89,999	0
\$90,000 to \$99,999	10
\$100,000 and Over	10
<b>Total</b>	<b>230</b>

Family Income	
Median After-Tax Family Income	\$30,046
Average After-Tax Family Income	\$38,891

Due to rounding consolidating the shown income brackets may lead to errors. Such errors would be most pronounced for small communities.

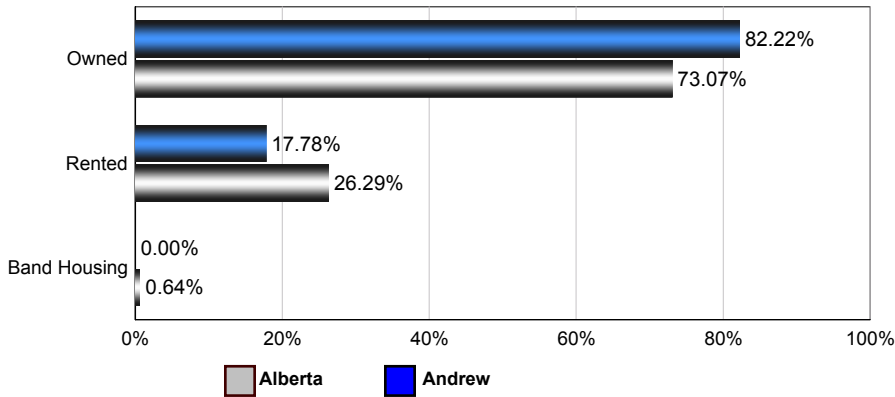
Source: Statistics Canada Census

Dwellings

Number of Occupied Private Dwellings by Ownership - Andrew

Andrew vs Alberta (2006)

Andrew

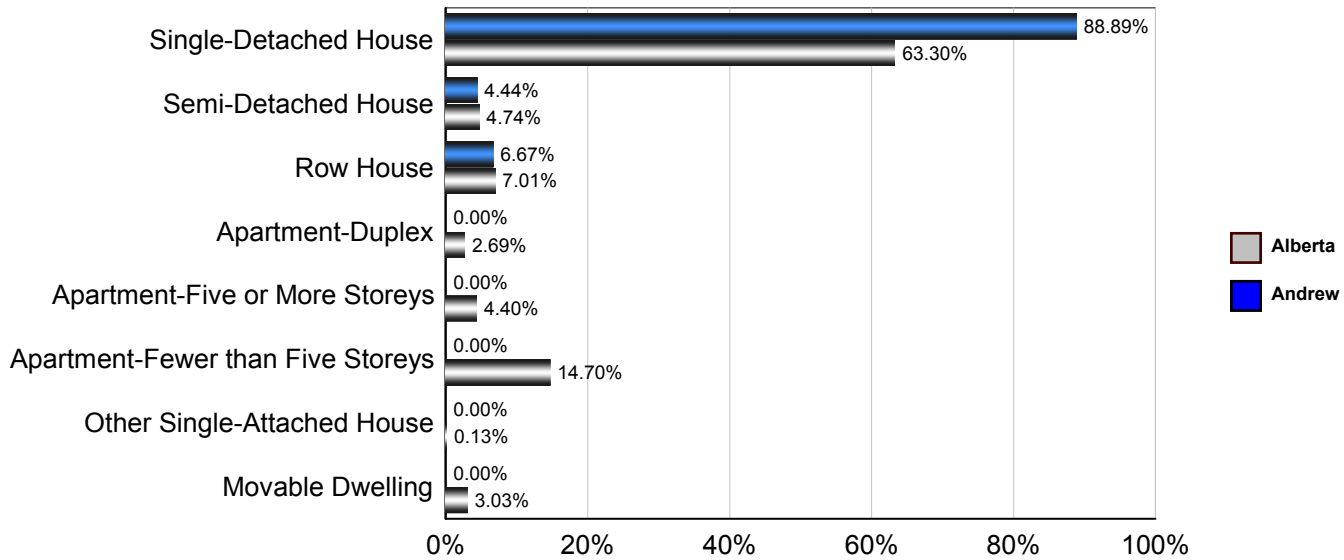


	1996	2001	2006
Owned	210	195	185
Rented	20	25	40
Band Housing	0	0	0
<b>Total</b>	<b>230</b>	<b>220</b>	<b>225</b>

Source: Statistics Canada 2007.  
 Andrew, Alberta. 2006 Community Profiles. 2006 Census.  
 Statistics Canada Catalogue no. 92-591-XWE. Ottawa. Released March 13, 2007.

Number of Occupied Private Dwellings by Structural Type - Andrew

Andrew vs Alberta (2006)



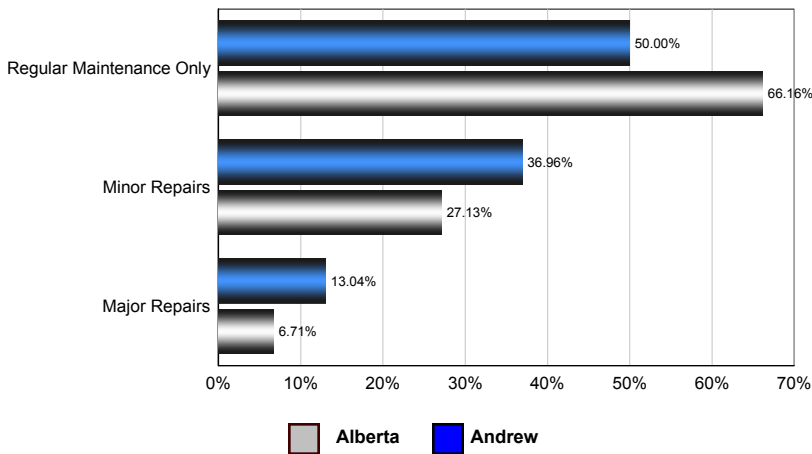
Andrew

	1996	2001	2006
Single-Detached House	195	205	200
Semi-Detached House	0	0	10
Row House	15	0	0
Apartment - Duplex	0	0	0
Apartment - Five or More Storeys	0	0	0
Apartment - Fewer than Five Storeys	0	0	0
Other Single-Attached House	10	0	0
Movable Dwelling	15	0	0
<b>Total</b>	<b>235</b>	<b>205</b>	<b>210</b>

Source: Statistics Canada 2007.  
 Andrew, Alberta. 2006 Community Profiles. 2006 Census.  
 Statistics Canada Catalogue no. 92-591-XWE. Ottawa. Released March 13, 2007.

## Number of Occupied Private Dwellings by the Condition of Dwelling - Andrew

### Andrew vs Alberta (2006)



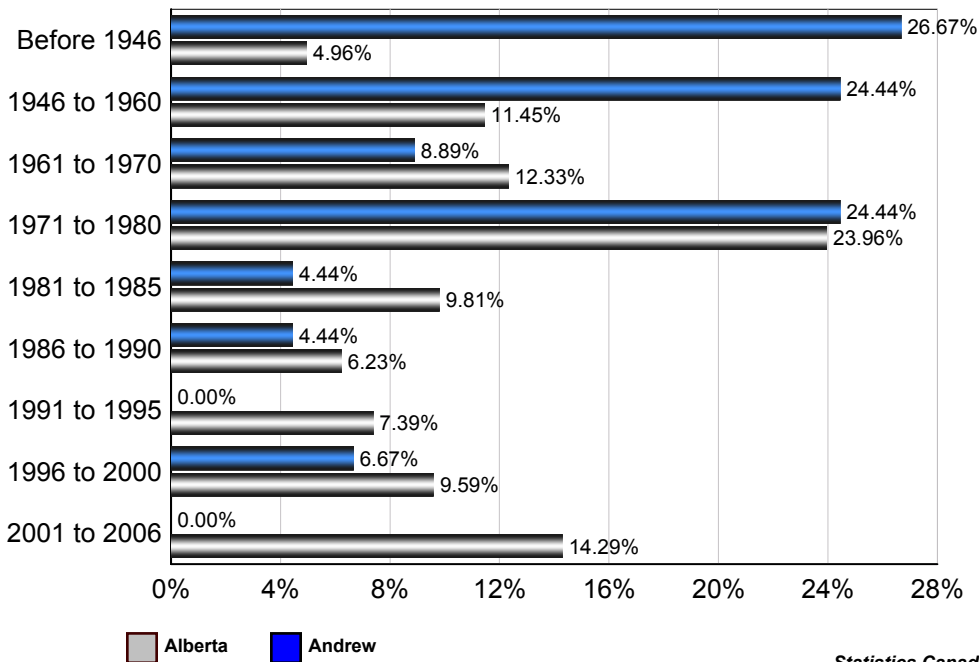
### Andrew

	1996	2001	2006
Regular Maintenance Only	80	105	115
Minor repairs	100	75	85
Major repairs	50	35	30
<b>Total</b>	<b>230</b>	<b>215</b>	<b>230</b>

Source: Statistics Canada 2007.  
Andrew, Alberta. 2006 Community Profiles. 2006 Census.  
Statistics Canada Catalogue no. 92-591-XWE. Ottawa. Released March 13, 2007.

## Number of Occupied Private Dwellings by Period of Construction - Andrew

### Andrew vs Alberta (2006)



### Andrew

	2006
Before 1946	60
1946 to 1960	55
1961 to 1970	20
1971 to 1980	55
1981 to 1985	10
1986 to 1990	10
1991 to 1995	0
1996 to 2000	15
2001 to 2006	0
<b>Total</b>	<b>225</b>

Source: Statistics Canada 2007.  
Andrew, Alberta. 2006 Community Profiles. 2006 Census.  
Statistics Canada Catalogue no. 92-591-XWE. Ottawa. Released March 13, 2007.

