

Bawlf

<http://www.bawlf.com>

Welcome

Welcome to our community. We hope the information contained within this profile is useful. If additional information is required, please contact our representative from the "Key Contacts" section.



Area Overview

The Village of Bawlf, situated east of Carmose, was established in 1905 by the coming of the Canadian Pacific Railway. The Village was named in honour of Nicholas Bawlf, President of the Winnipeg Grain Exchange.

Location

The Village of Bawlf is located in the Carmose County, 25 km east of the City of Carmose on Highway 13.

Economic Base

The major economic base of the region is agriculture and petroleum exploration.

Economic Facts

See www.bawlf.com

Utilities

Electrical Power

TransAlta Utilities
Box 1550, Station M
Calgary, Alberta
T2P 4P7

Natural Gas

Ankerton Gas Co-op
Box 100
Bawlf, Alberta
T0B 0J0
Tel: 780-373-3773

Telephone

Telus
Box 2422
Edmonton, Alberta

T5J 2S1
Tel: 780-493-4400

Water Supply

The water supply is administered by the Village of Bawlf.

Waste Management

Waste management is through the Kelsey Transfer Station, by Camrose County.

Taxation

Mill Rates [2008]

- Residential - Public 8.91
- Residential - Separate N/A
- Non-Residential - Public 11.65
- Non-Residential - Separate N/A

Transportation

Air Services

There is no local airstrip in Bawlf. The nearest airport is the Camrose Municipal Airport. The nearest commercial and air freight services are at the Edmonton International Airport.

Rail Services

Bawlf is served by Canadian Pacific Railways.

Highways

The connecting highway is Highway 13, leading west to Camrose and east to Daysland and Killam.

Bus Services

Regularly scheduled inter-community service is available.

Couriers and Taxis

Loomis and Purolator Couriers

Community Lifestyle

See www.bawlf.com

Education

Bawlf is part of the Battle River Regional School Division No. 31, headquartered in Camrose [Tel: 780-672-6131/www.brsd.ab.ca/bawlf].

Daycare/Nursery

Bawlf Playschool

Public

Bawlf School provides education for Kindergarten to Grade 12.

Separate

NA

Private

NA

Post Secondary

The University of Alberta (Augustana Campus) in Camrose, has over 1,000 students, a campus residence and has degree granting status in 21 disciplines [arts and sciences].

Edmonton-based post-secondary institutions include The University of Alberta, Grant MacEwan Community College, and the Northern Alberta

Health Care

Medical services are available from Daysland [Daysland Hospital, a 15-bed active treatment hospital, and Daysland Medical Centre], as well as Camrose [St. Mary's Hospital is a 117 bed acute care hospital].

Emergency Services

Fire Protection

Bawlf is served by a volunteer fire department [Tel: 911].

Police Services

Bawlf is served by the Camrose detachment of the Royal Canadian Mounted Police [Tel: 911].

Ambulance Services

Ambulance service is provided from Camrose [Tel: 911].

Community Services

See www.bawlf.com

Key Contacts

Village of Bawlf

Box 40
Bawlf, Alberta
T0B 0J0
Tel: 780-373-3797
Fax: 780-373-3798
e-mail: vilbawlf@syban.net

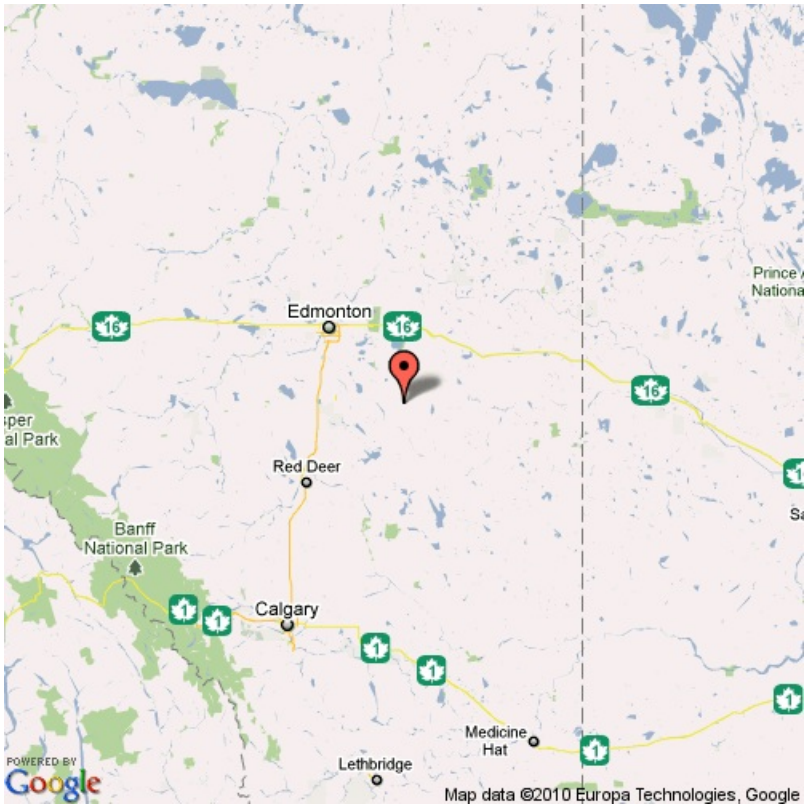
Jerry Iwanus
Mayor
e-mail: jjwanus@bawlf.com

Lynn Horbasenko
Village Manager
e-mail: LHorbasenko@bawlf.com

Myrna Schapansky
Administrator
e-mail: mschapansky@bawlf.com

See www.bawlf.com, including the "External Links" page for additional contact information.

Google Map



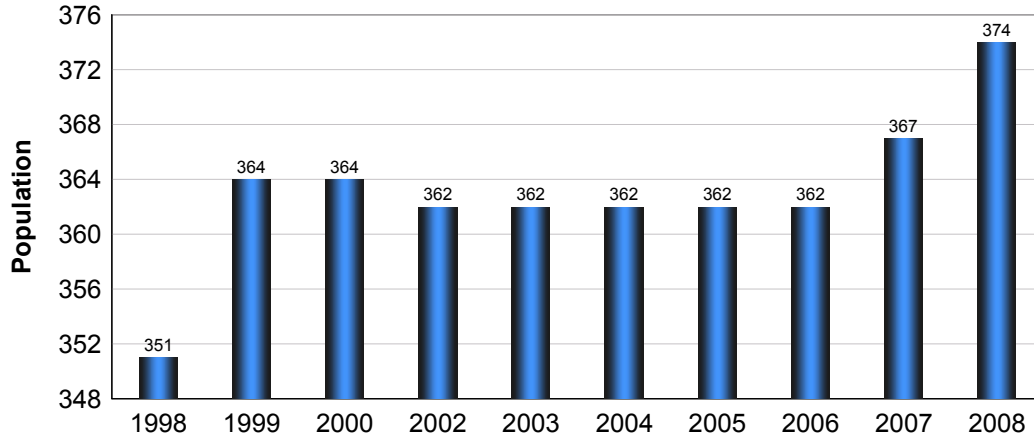
Disclaimer: Information in this profile has been provided from a variety of external sources. AlbertaFirst.com Ltd. provides this template, and each community posts their own content within the template. If you find inaccuracies or information you feel needs changing, please contact the community directly. Although every effort has been made to ensure the accuracy, currency and reliability of the content and data, AlbertaFirst.com Ltd. accepts no responsibility in this regard.

©AlbertaFirst.com Ltd., 2010.

A chart or table in this Profile may be blank. This will occur if there was no data available for that community for the specified time period

Municipal Population

Total Population - Bawlf

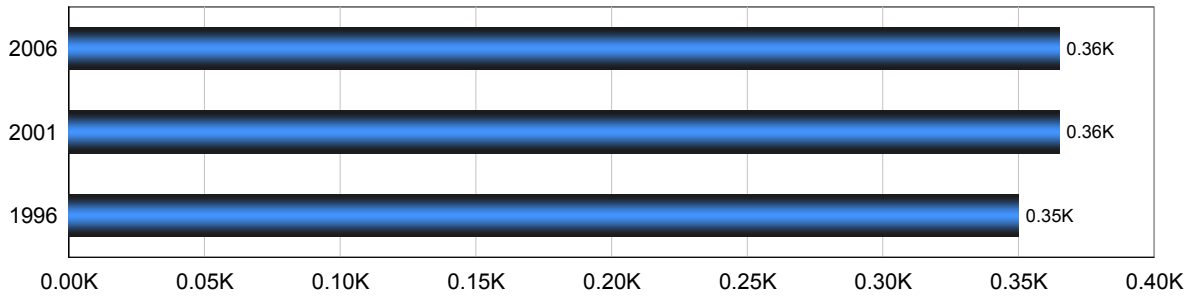


Year	Community Growth	Alberta Growth
2008	1.91%	2.37%
2007	1.38%	3.39%
2006	0.00%	1.95%
2005	0.00%	3.91%
2004	0.00%	0.95%
2003	0.00%	1.34%
2001	(0.55)%	4.02%
2000	0.00%	2.15%
1999	3.70%	3.24%
1998	0.00%	1.33%

Source: Statistics Canada 2007.
 Bawlf, Alberta. 2006 Community Profiles. 2006 Census.
 Statistics Canada Catalogue no. 92-591-XWE. Ottawa. Released March 13, 2007.

Population

Total Population - Bawlf

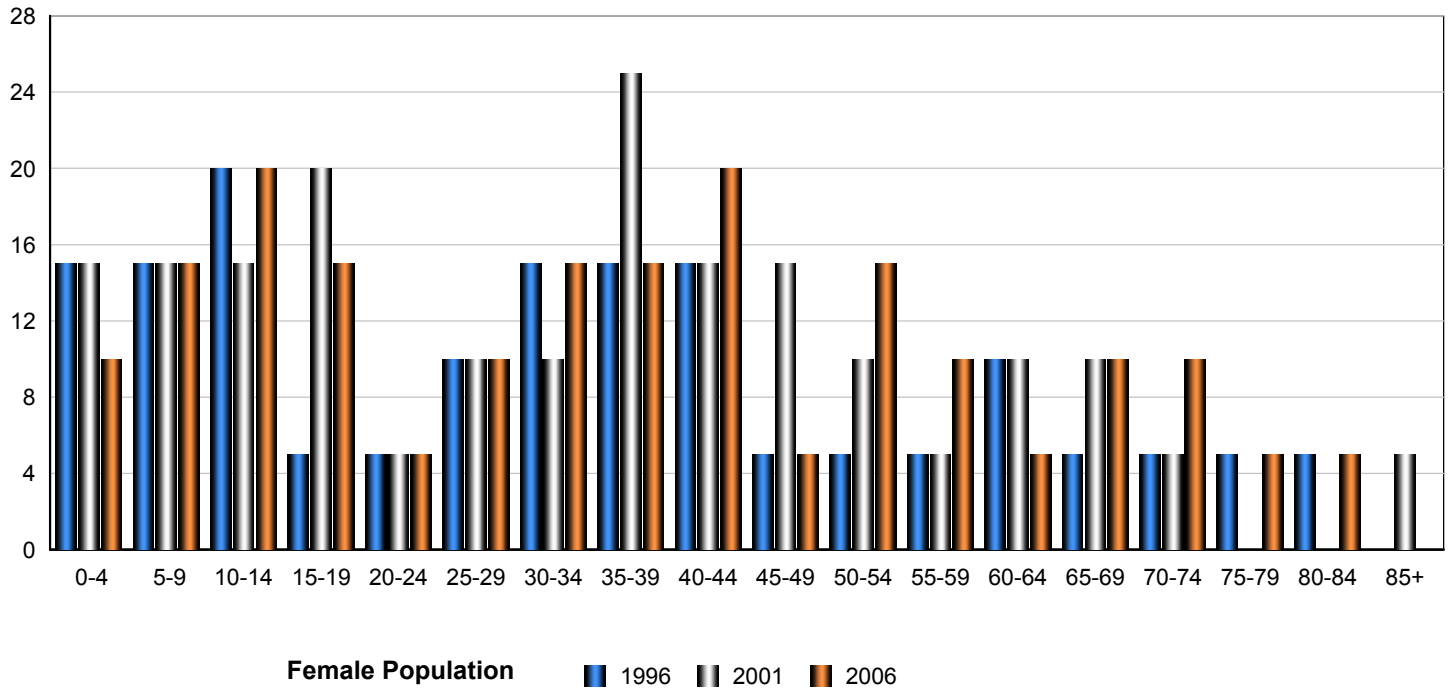


Census Year	Total Population	% Change
2006	365	1.40%
2001	365	3.10%
1996	350	7.30%

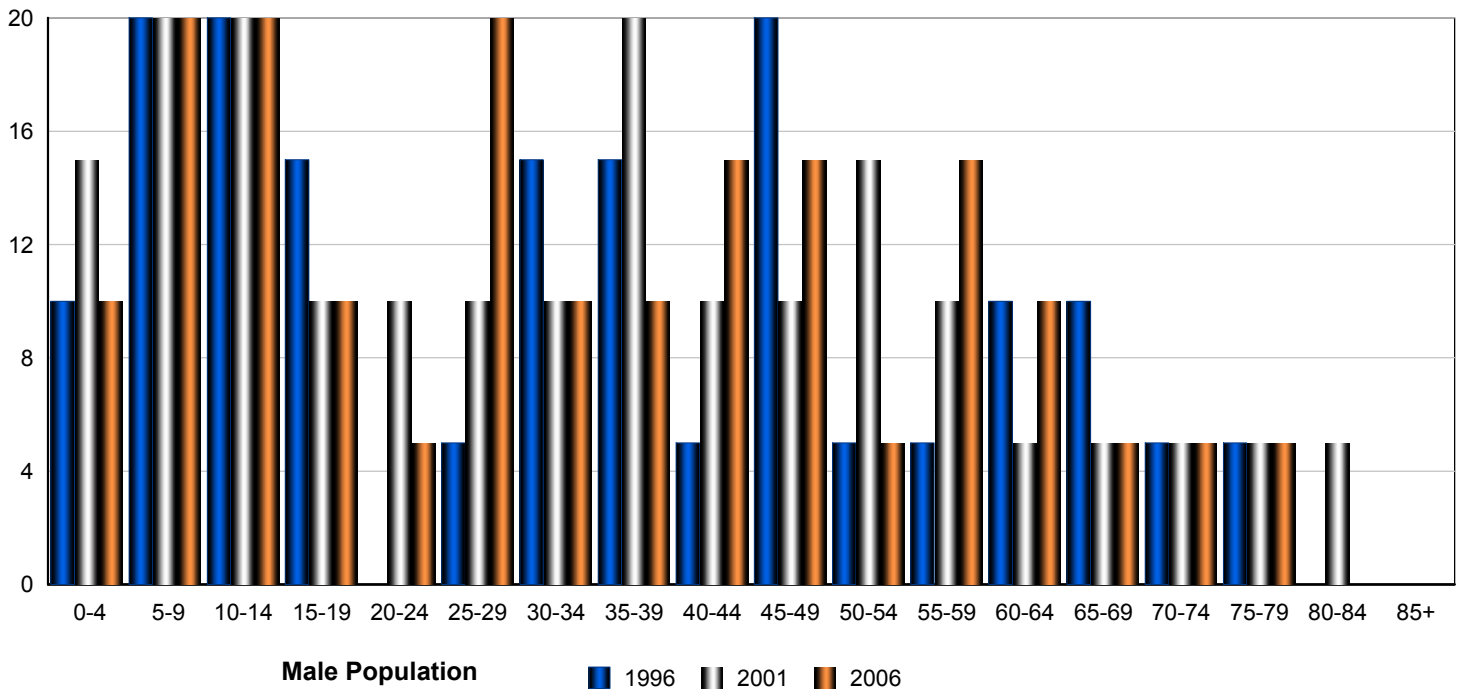
Source: Statistics Canada 2007.
 Bawlf, Alberta. 2006 Community Profiles. 2006 Census.
 Statistics Canada Catalogue no. 92-591-XWE. Ottawa. Released March 13, 2007.

Total Population by Gender and Age - Bawlf

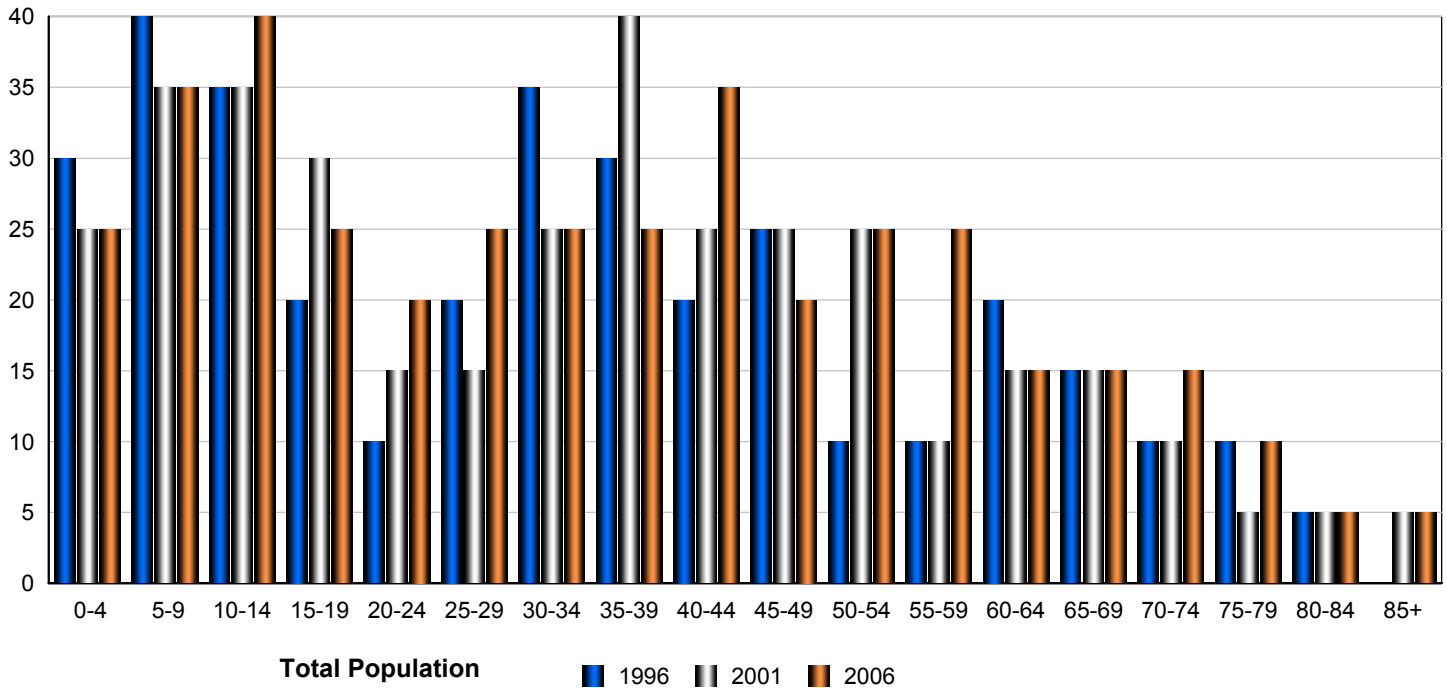
Census Population by Gender - Bawlf



Census Population by Gender - Bawlf



Census Population by Gender - Bawlf



	Male			Female			Total		
	2006	2001	1996	2006	2001	1996	2006	2001	1996
0-4	10	15	10	10	15	15	20	30	25
5-9	20	20	20	15	15	15	35	35	35
10-14	20	20	20	20	15	20	40	35	40
15-19	10	10	15	15	20	5	25	30	20
20-24	5	10	0	5	5	5	10	15	5
25-29	20	10	5	10	10	10	30	20	15
30-34	10	10	15	15	10	15	25	20	30
35-39	10	20	15	15	25	15	25	45	30
40-44	15	10	5	20	15	15	35	25	20
45-49	15	10	20	5	15	5	20	25	25
50-54	5	15	5	15	10	5	20	25	10
55-59	15	10	5	10	5	5	25	15	10
60-64	10	5	10	5	10	10	15	15	20
65-69	5	5	10	10	10	5	15	15	15
70-74	5	5	5	10	5	5	15	10	10
75-79	5	5	5	5	0	5	10	5	10
80-84	0	5	0	5	0	5	5	5	5
85-89	0	0	0	0	5	0	0	5	0
Total	180	185	165	190	190	160	370	375	325

Source: Statistics Canada 2007.
 Bawlf, Alberta. 2006 Community Profiles. 2006 Census.
 Statistics Canada Catalogue no. 92-591-XWE. Ottawa. Released March 13, 2007.

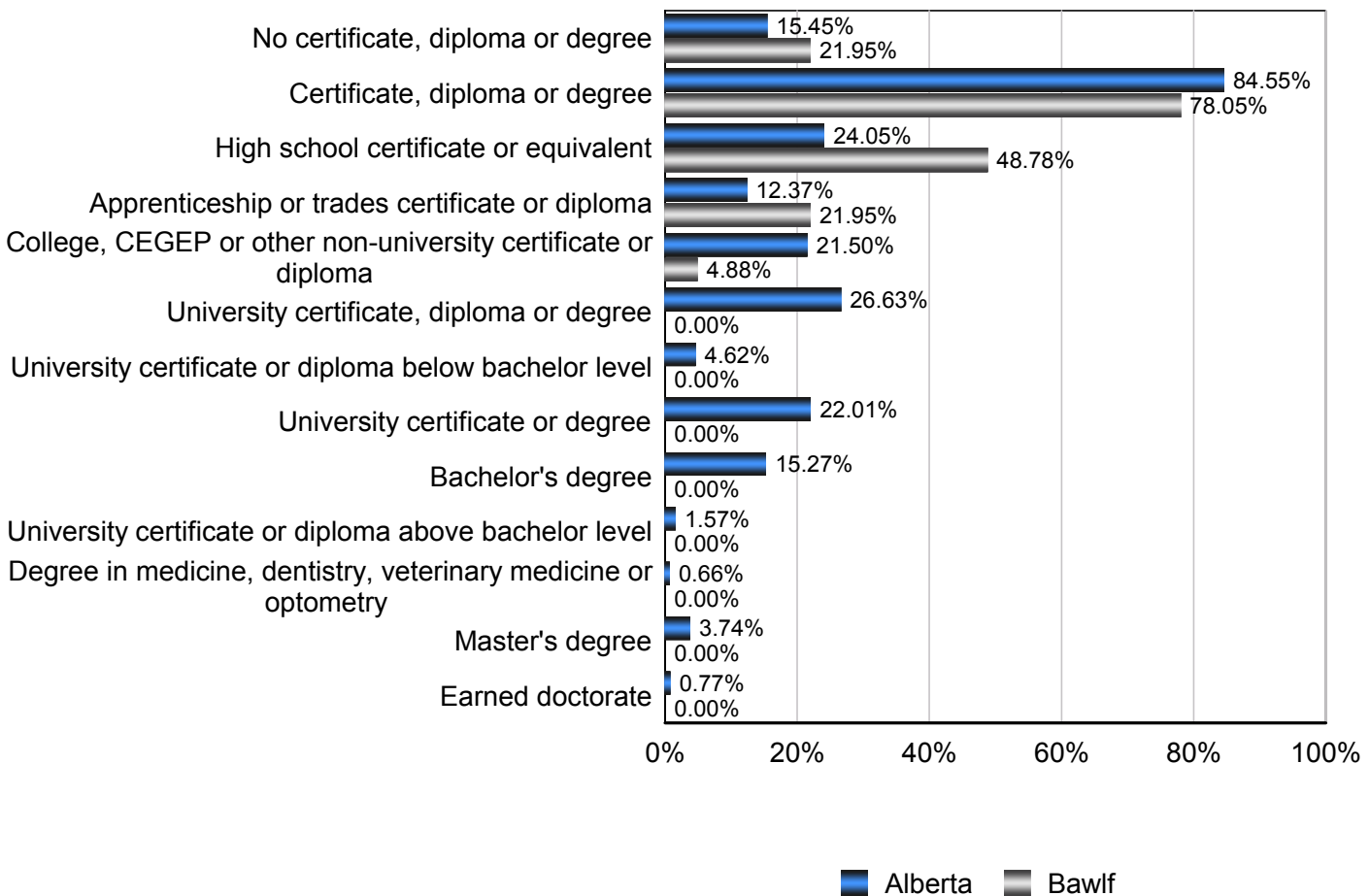
Education Statistics

Highest Level of Schooling, Population Aged 25-64 - Bawlf (2006)

% of Population Aged 25-64

Highest Level of Schooling	Bawlf	Alberta
No certificate, diploma or degree	21.95%	15.45%
Certificate, diploma or degree	78.05%	84.55%
High school certificate or equivalent	48.78%	24.05%
Apprenticeship or trades certificate or diploma	21.95%	12.37%
College, CEGEP or other non-university certificate or diploma	4.88%	21.50%
University certificate, diploma or degree	0.00%	26.63%
University certificate or diploma below bachelor level	0.00%	4.62%
University certificate or degree	0.00%	22.01%
Bachelor's degree	0.00%	15.27%
University certificate or diploma above bachelor level	0.00%	1.57%
Degree in medicine, dentistry, veterinary medicine or optometry	0.00%	0.66%
Master's degree	0.00%	3.74%
Earned doctorate	0.00%	0.77%

Amount by Which the Highest Level of Schooling - Bawlf vs Provincial Average (2006)

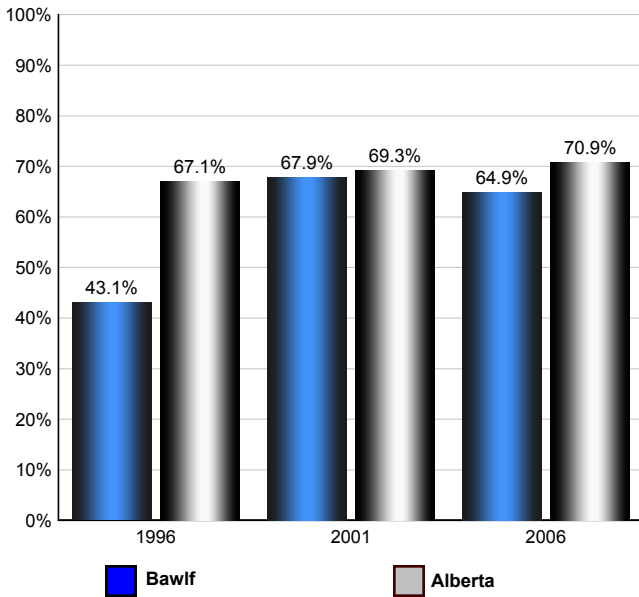


Source: Statistics Canada 2007. Alberta, Alberta. 2006 Community Profiles. 2006 Census. Statistics Canada Catalogue no. 92-591-XWE. Ottawa. Released March 13, 2007.

Labour Force

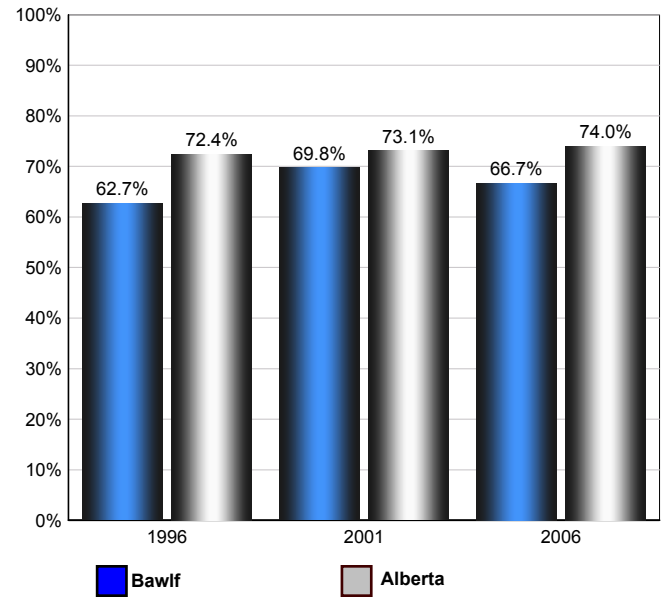
Annual Labour Force Activity Rates - Bawlf vs Alberta

Employment Rate



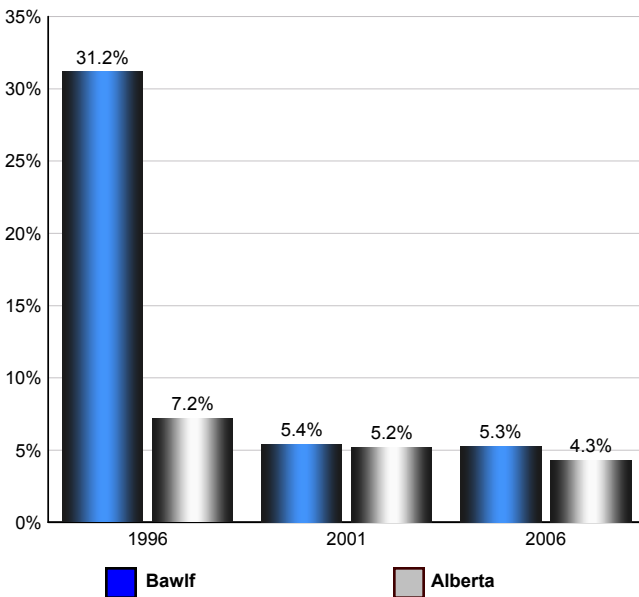
The Employment Rate is calculated by dividing the total employed by the total population 15 and over

Participation Rate



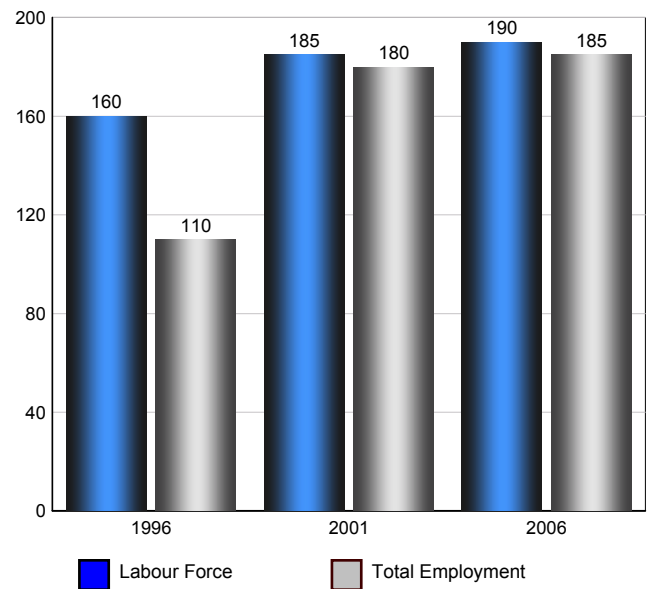
The Participation rate is calculated by summing together the number employed and unemployed and dividing the result by the total population aged 15 and over

Unemployment Rate



The Unemployment rate is calculated by dividing the total number of persons in the labour force that are reported as being unemployed by the total labour force.

Bawlf Labour Force and Total Employment (Age 15+)



Source: Statistics Canada 2007. Bawlf, Alberta. 2006 Community Profiles. 2006 Census. Statistics Canada Catalogue no. 92-591-XWE. Ottawa. Released March 13, 2007.

Labour Force Age 15+ - Bawlf (2006)

Industry by Gender

Industry	Males	Females	Total
Agriculture, Forestry, Fishing and Hunting	10	0	10
Mining, Oil and Gas Extraction	15	0	15
Utilities	10	0	10
Construction	20	0	20
Manufacturing	10	0	10
Wholesale Trade	0	0	0
Retail Trade	25	0	25
Transportation and Warehousing	10	0	10
Information and Cultural Industries	0	0	0
Finance and Insurance	0	0	0
Real Estate, Rental and Leasing	0	0	0
Professional, Scientific and Technical Services	0	0	0
Management of Companies and Enterprises	0	0	0
Administrative and Support, Waste Management and Remediation Services	0	10	10
Educational services	0	0	0
Health care and social assistance	10	30	40
Arts, Entertainment and Recreation	0	0	0
Accommodation and Food Services	0	0	0
Other Services (except Public Administration)	10	0	10
Public Administration	10	20	30
Total	130	60	190

Source: Statistics Canada 2007.
Bawlf, Alberta. 2006 Community Profiles. 2006 Census.
Statistics Canada Catalogue no. 92-591-XWE. Ottawa. Released March 13, 2007.

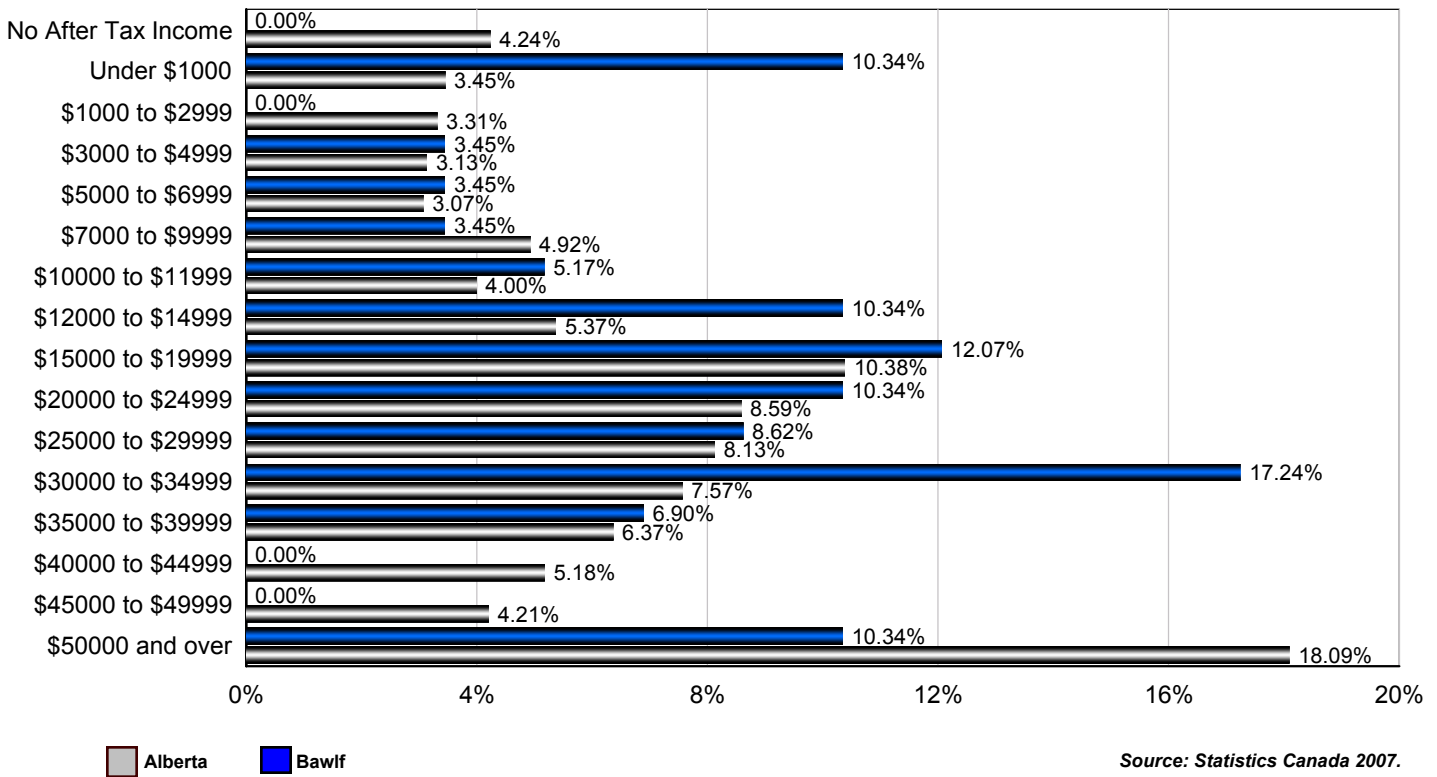
Occupation by Gender

Occupation	Males	Females	Total
Management Occupations	0	0	0
Business, Finance and Administration Occupations	10	30	40
Natural and Applied Sciences and Related Occupations	0	0	0
Health Occupations	0	0	0
Occupations in Social Science, Education, Government Service	0	0	0
Occupations in Art, Culture, Recreation and Sport	0	0	0
Sales and Service Occupations	35	30	65
Trades, Transport and Equipment Operators and Related Occupations	65	10	75
Occupations Unique to Primary	0	0	0
Occupations Unique to Processing, Manufacturing and Utilities	0	0	0
Total	110	70	180

Source: Statistics Canada 2007.
Bawlf, Alberta. 2006 Community Profiles. 2006 Census.
Statistics Canada Catalogue no. 92-591-XWE. Ottawa. Released March 13, 2007.

Income

Percent of Population 15+ by Income Bracket - Bawlf vs Alberta (2005)



Source: Statistics Canada 2007.
 Bawlf, Alberta. 2006 Community Profiles. 2006 Census.
 Statistics Canada Catalogue no. 92-591-XWE. Ottawa. Released March 13, 2007.

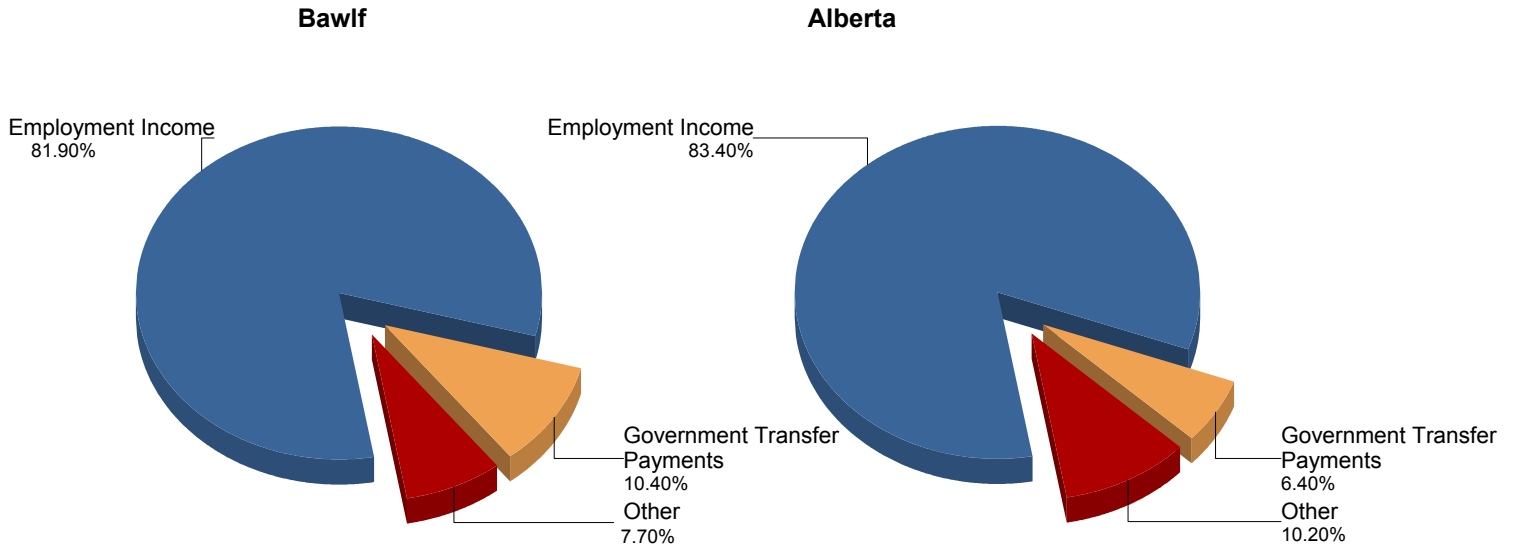
Population 15+ by Total After Tax Income - Bawlf (2005)

	Males	Females	Total
Without After-Tax Income	0	0	0
Under \$1,000	20	10	30
\$1,000 to \$2,999	0	0	0
\$3,000 to \$4,999	0	10	10
\$5,000 to \$6,999	0	10	10
\$7,000 to \$9,999	0	0	0
\$10,000 to \$11,999	0	15	15
\$12,000 to \$14,999	20	10	30
\$15,000 to \$19,999	0	30	30
\$20,000 to \$24,999	20	10	30
\$25,000 to \$29,999	20	10	30
\$30,000 to \$34,999	30	25	55
\$35,000 to \$39,999	20	0	20
\$40,000 to \$44,999	0	0	0
\$45,000 to \$49,999	0	0	0
\$50,000 and over	15	15	30
Total	160	130	290

Due to rounding consolidating the shown income brackets may lead to errors. Such errors would be most pronounced for small communities.

Source: Statistics Canada 2007.
 Bawlf, Alberta. 2006 Community Profiles. 2006 Census.
 Statistics Canada Catalogue no. 92-591-XWE. Ottawa. Released March 13, 2007.

Composition of Family Income for Economic Families - Bawlf vs Alberta (2005)



Economic family total income - The total income of an economic family is the sum of the total incomes of all members of that family.

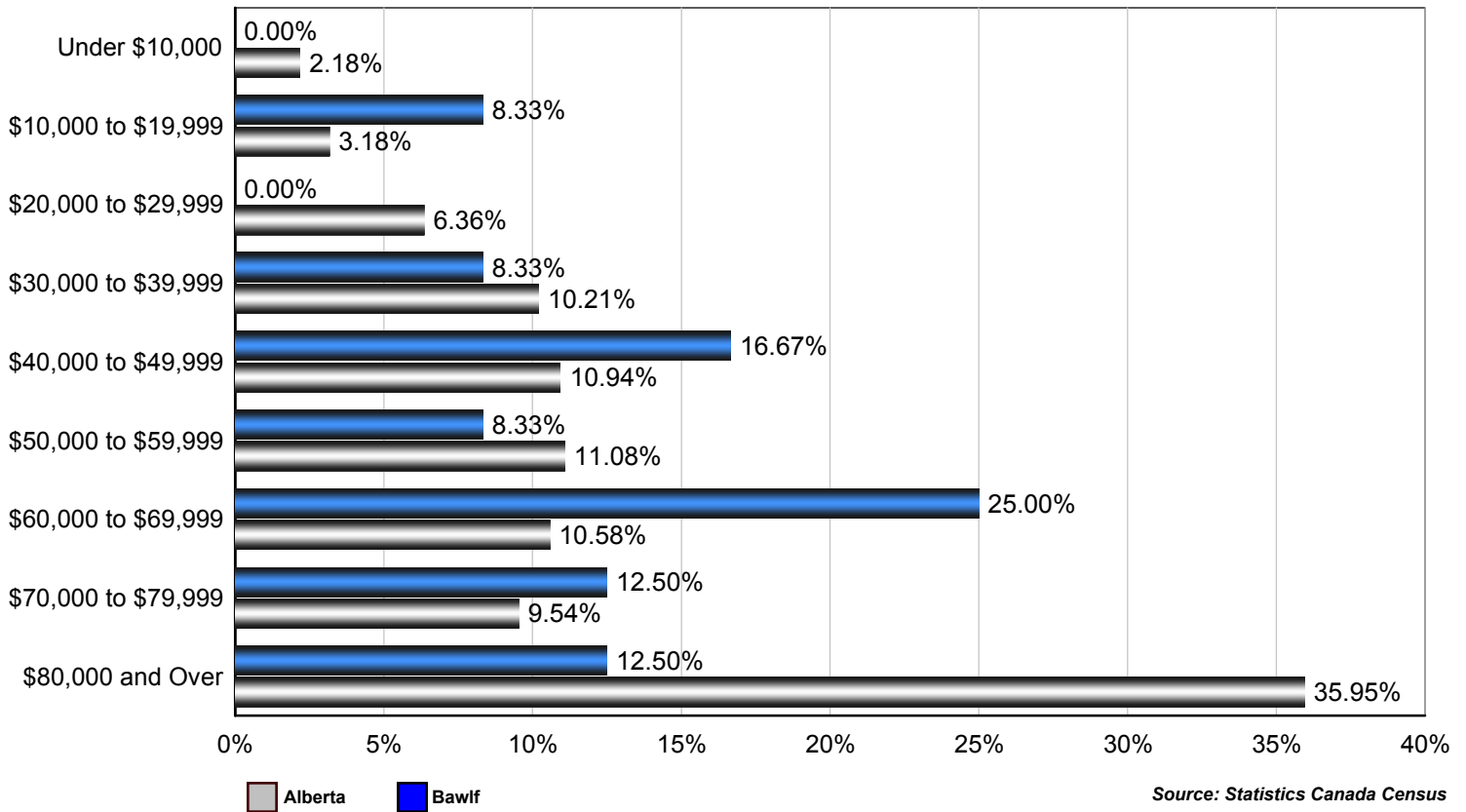
Source: Statistics Canada 2007.
 Bawlf, Alberta. 2006 Community Profiles. 2006 Census.
 Statistics Canada Catalogue no. 92-591-XWE. Ottawa. Released March 13, 2007.

Population 15+ With Employment Earnings - Bawlf (2005)

	Males	Females	Total
Earnings - As a % of total Earnings	81%	58%	72%
Median Employment Earnings	\$31,581	\$33,294	\$31,587
Average Employment Earnings	\$34,861	\$30,442	\$33,153

Source: Statistics Canada 2007.
 Bawlf, Alberta. 2006 Community Profiles. 2006 Census.
 Statistics Canada Catalogue no. 92-591-XWE. Ottawa. Released March 13, 2007.

Percent of Total Economic Families by After-tax Income Brackets - Bawlf vs Alberta (2005)



Number of Economic Families by After-tax Income Brackets - Bawlf (2005)

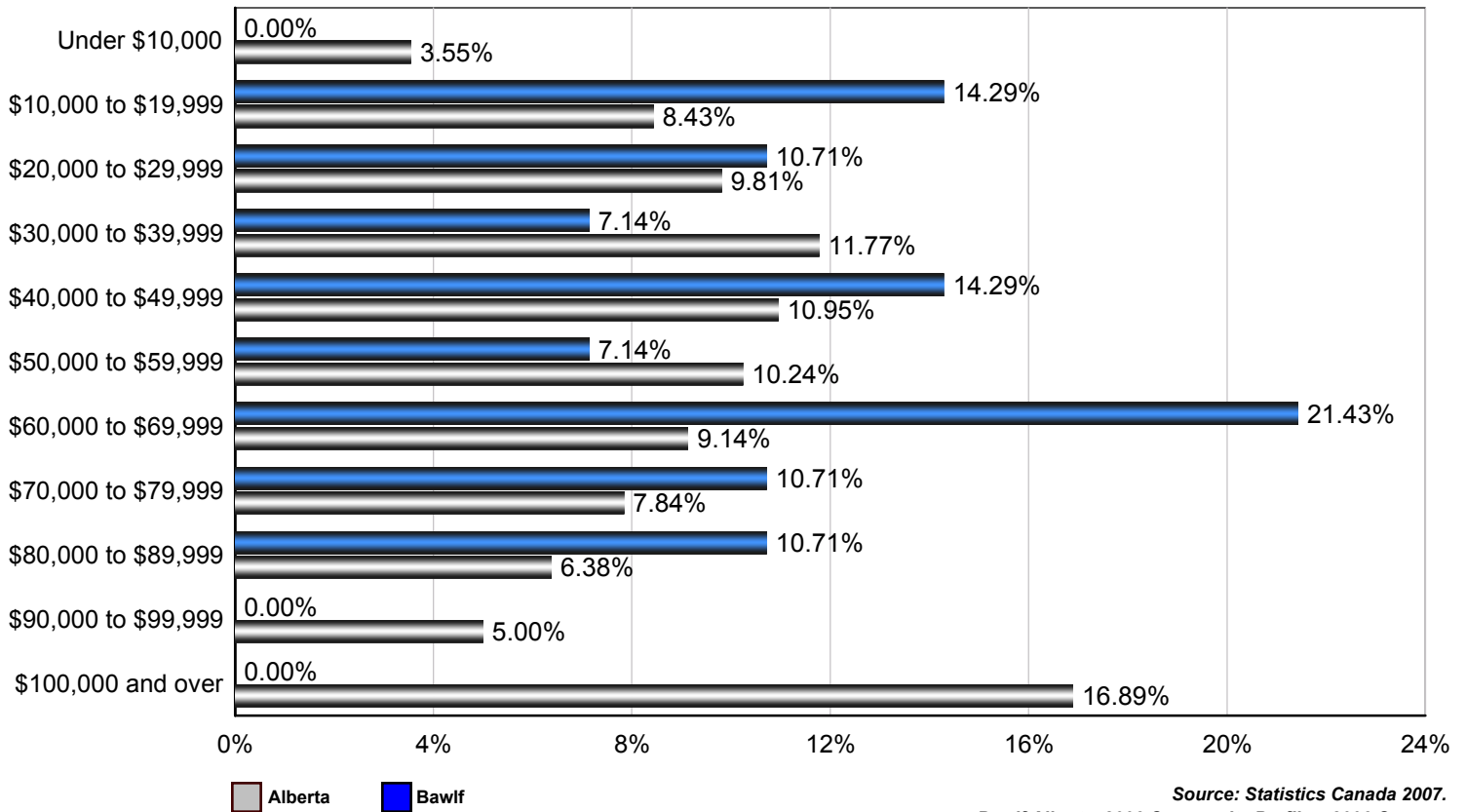
Income Bracket	Number of Families
Under \$10,000	0
\$10,000 to \$19,999	10
\$20,000 to \$29,999	0
\$30,000 to \$39,999	10
\$40,000 to \$49,999	20
\$50,000 to \$59,999	10
\$60,000 to \$69,999	30
\$70,000 to \$79,999	15
\$80,000 and over	15
Total	120

Family Income	
Median After-Tax Family Income	\$61,681
Average After-Tax Family Income	\$57,641

Due to rounding consolidating the shown income brackets may lead to errors. Such errors would be most pronounced for small communities.

Source: Statistics Canada 2007.
 Bawlf, Alberta. 2006 Community Profiles. 2006 Census.
 Statistics Canada Catalogue no. 92-591-XWE. Ottawa. Released March 13, 2007.

Percent of Total Private Households by After-tax Income Brackets - Bawlf vs Alberta (2005)



Source: Statistics Canada 2007.
 Bawlf, Alberta. 2006 Community Profiles. 2006 Census.
 Statistics Canada Catalogue no. 92-591-XWE. Ottawa. Released March 13, 2007.

Number of Private Households by After-tax Income Brackets - Bawlf (2005)

Income Bracket	Number of Families
Under \$10,000	0
\$10,000 to \$19,999	20
\$20,000 to \$29,999	15
\$30,000 to \$39,999	10
\$40,000 to \$49,999	20
\$50,000 to \$59,999	10
\$60,000 to \$69,999	30
\$70,000 to \$79,999	15
\$80,000 to \$89,999	15
\$90,000 to \$99,999	0
\$100,000 and Over	0
Total	140

Family Income	
Median After-Tax Family Income	\$58,014
Average After-Tax Family Income	\$52,267

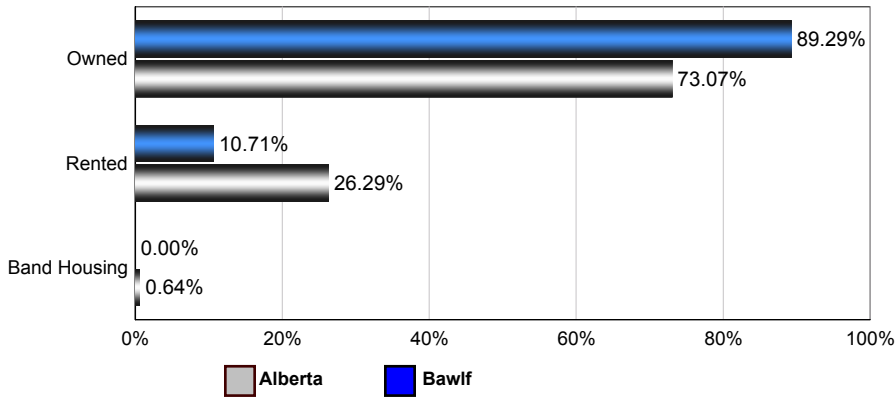
Due to rounding consolidating the shown income brackets may lead to errors. Such errors would be most pronounced for small communities.

Source: Statistics Canada Census

Dwellings

Number of Occupied Private Dwellings by Ownership - Bawlf

Bawlf vs Alberta (2006)



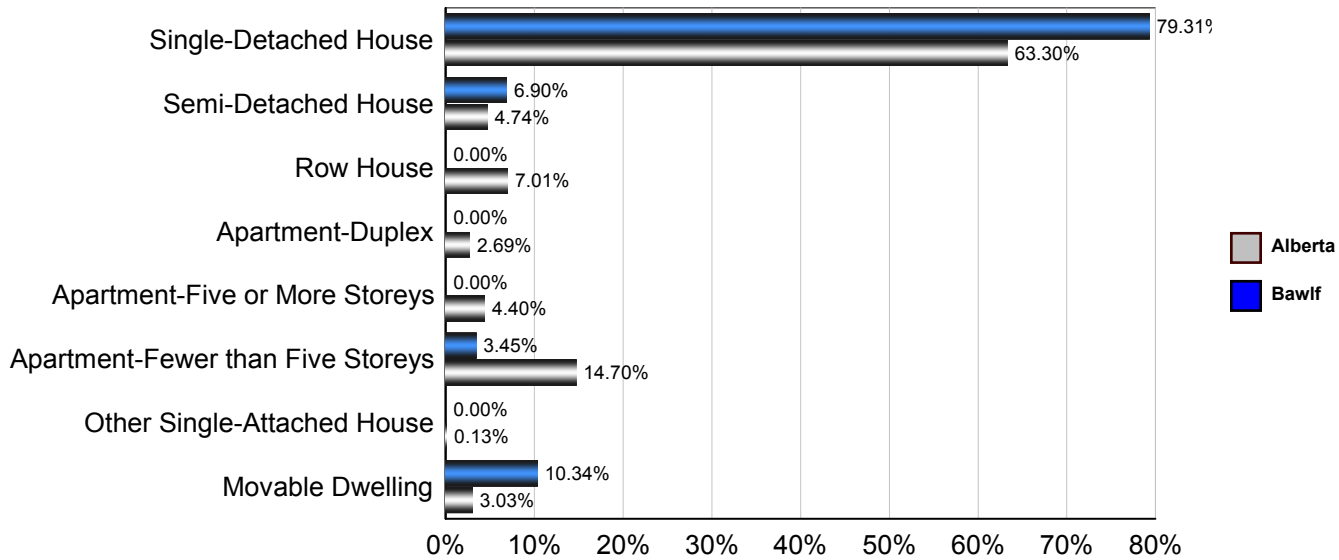
Bawlf

	1996	2001	2006
Owned	110	125	125
Rented	15	10	15
Band Housing	0	0	0
Total	125	135	140

Source: Statistics Canada 2007.
 Bawlf, Alberta. 2006 Community Profiles. 2006 Census.
 Statistics Canada Catalogue no. 92-591-XWE. Ottawa. Released March 13, 2007.

Number of Occupied Private Dwellings by Structural Type - Bawlf

Bawlf vs Alberta (2006)



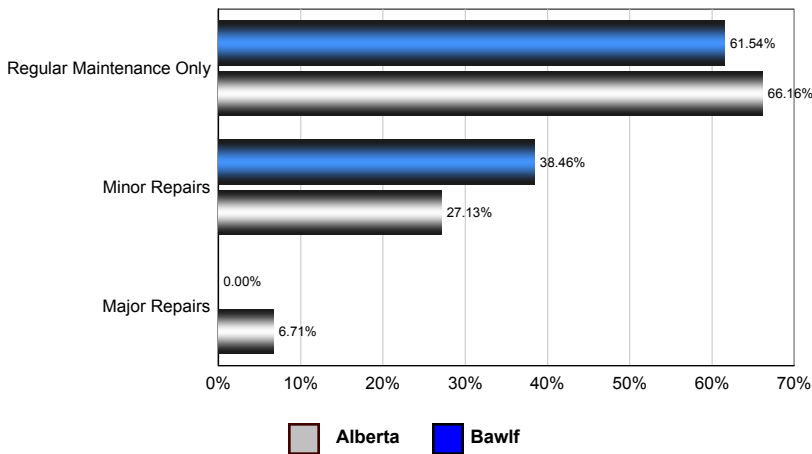
Bawlf

	1996	2001	2006
Single-Detached House	95	130	115
Semi-Detached House	0	5	10
Row House	10	0	0
Apartment - Duplex	0	0	0
Apartment - Five or More Storeys	0	0	0
Apartment - Fewer than Five Storeys	0	5	5
Other Single-Attached House	0	0	0
Movable Dwelling	15	0	15
Total	120	140	145

Source: Statistics Canada 2007.
 Bawlf, Alberta. 2006 Community Profiles. 2006 Census.
 Statistics Canada Catalogue no. 92-591-XWE. Ottawa. Released March 13, 2007.

Number of Occupied Private Dwellings by the Condition of Dwelling - Bawlf

Bawlf vs Alberta (2006)



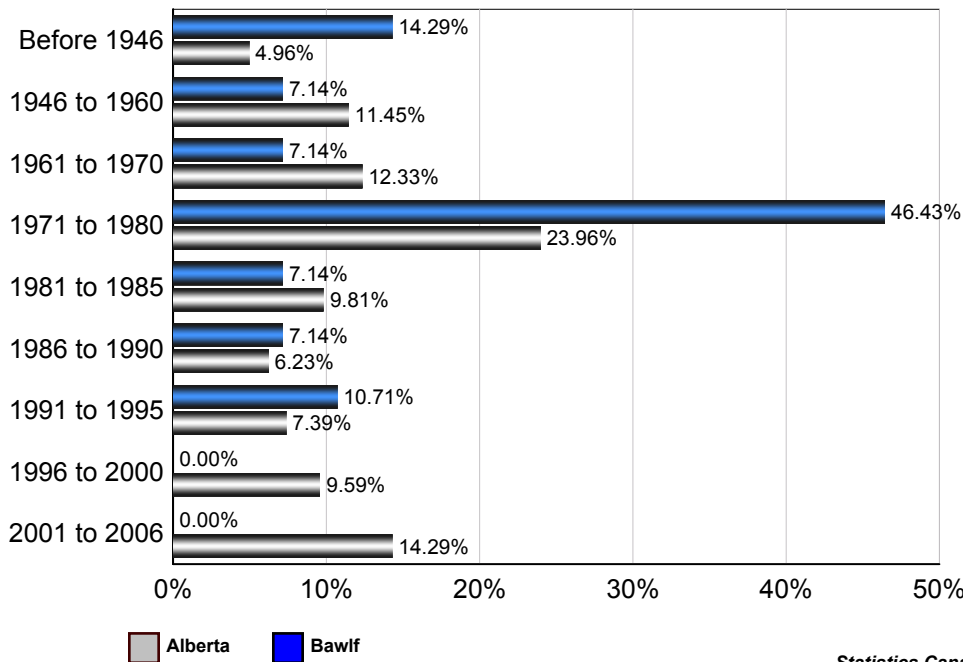
Bawlf

	1996	2001	2006
Regular Maintenance Only	60	80	80
Minor repairs	55	20	50
Major repairs	15	35	0
Total	130	135	130

Source: Statistics Canada 2007.
 Bawlf, Alberta. 2006 Community Profiles. 2006 Census.
 Statistics Canada Catalogue no. 92-591-XWE. Ottawa. Released March 13, 2007.

Number of Occupied Private Dwellings by Period of Construction - Bawlf

Bawlf vs Alberta (2006)



Bawlf

	2006
Before 1946	20
1946 to 1960	10
1961 to 1970	10
1971 to 1980	65
1981 to 1985	10
1986 to 1990	10
1991 to 1995	15
1996 to 2000	0
2001 to 2006	0
Total	140

Source: Statistics Canada 2007.
 Bawlf, Alberta. 2006 Community Profiles. 2006 Census.
 Statistics Canada Catalogue no. 92-591-XWE. Ottawa. Released March 13, 2007.

