

# Clive

## Google Map



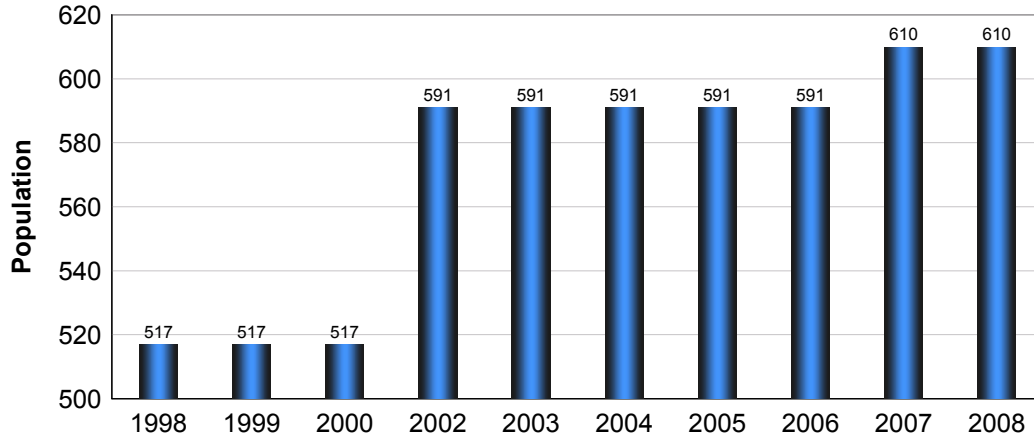
Disclaimer: Information in this profile has been provided from a variety of external sources. AlbertaFirst.com Ltd. provides this template, and each community posts their own content within the template. If you find inaccuracies or information you feel needs changing, please contact the community directly. Although every effort has been made to ensure the accuracy, currency and reliability of the content and data, AlbertaFirst.com Ltd. accepts no responsibility in this regard.

©AlbertaFirst.com Ltd., 2010.

A chart or table in this Profile may be blank. This will occur if there was no data available for that community for the specified time period

## Municipal Population

### Total Population - Clive

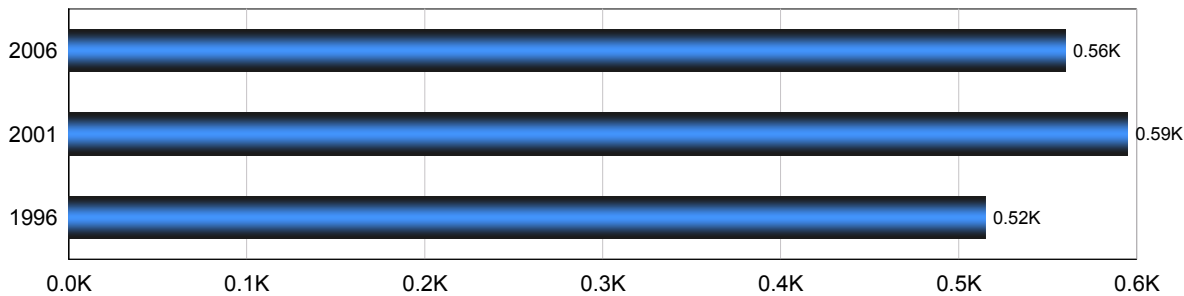


| Year | Community Growth | Alberta Growth |
|------|------------------|----------------|
| 2008 | 0.00%            | 2.37%          |
| 2007 | 3.21%            | 3.39%          |
| 2006 | 0.00%            | 1.95%          |
| 2005 | 0.00%            | 3.91%          |
| 2004 | 0.00%            | 0.95%          |
| 2003 | 0.00%            | 1.34%          |
| 2001 | 14.31%           | 4.02%          |
| 2000 | 0.00%            | 2.15%          |
| 1999 | 0.00%            | 3.24%          |
| 1998 | 0.00%            | 1.33%          |

Source: Statistics Canada 2007.  
Clive, Alberta. 2006 Community Profiles. 2006 Census.  
Statistics Canada Catalogue no. 92-591-XWE. Ottawa. Released March 13, 2007.

## Population

### Total Population - Clive

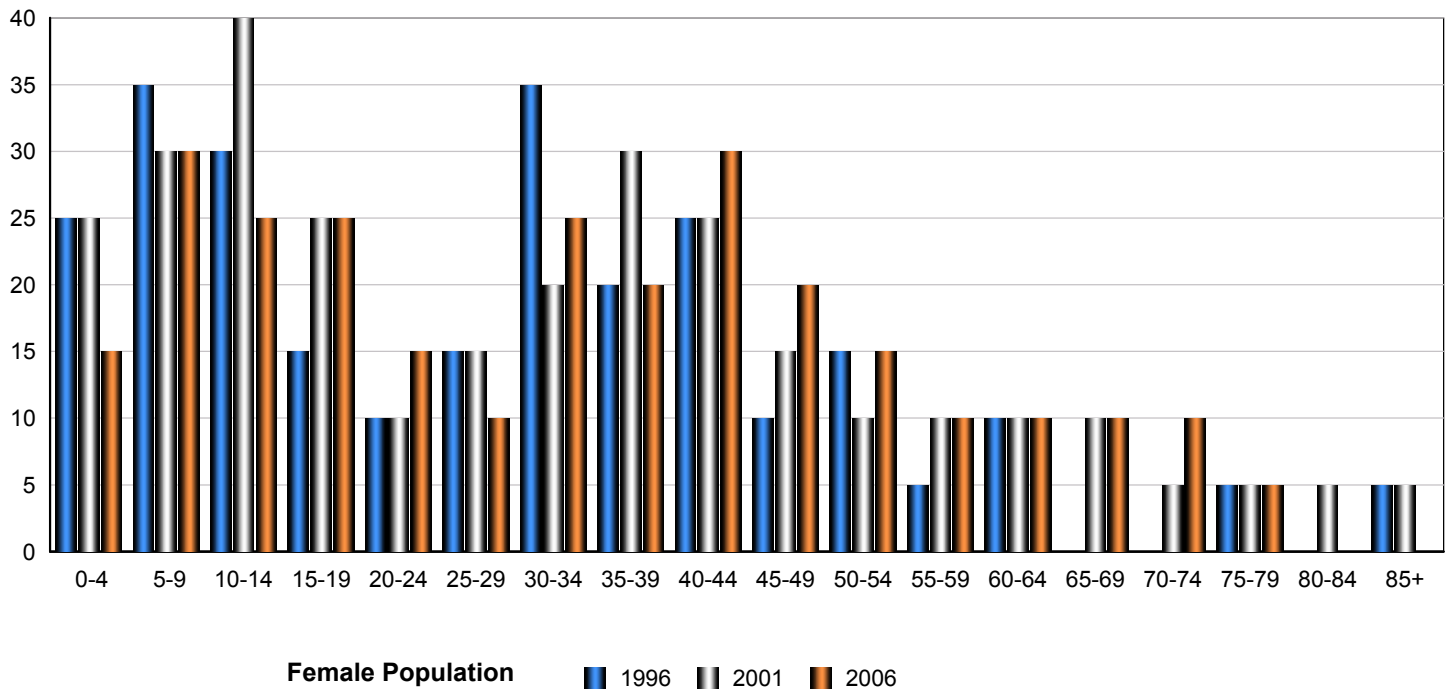


| Census Year | Total Population | % Change |
|-------------|------------------|----------|
| 2006        | 560              | 4.90%    |
| 2001        | 595              | 14.30%   |
| 1996        | 515              | 24.90%   |

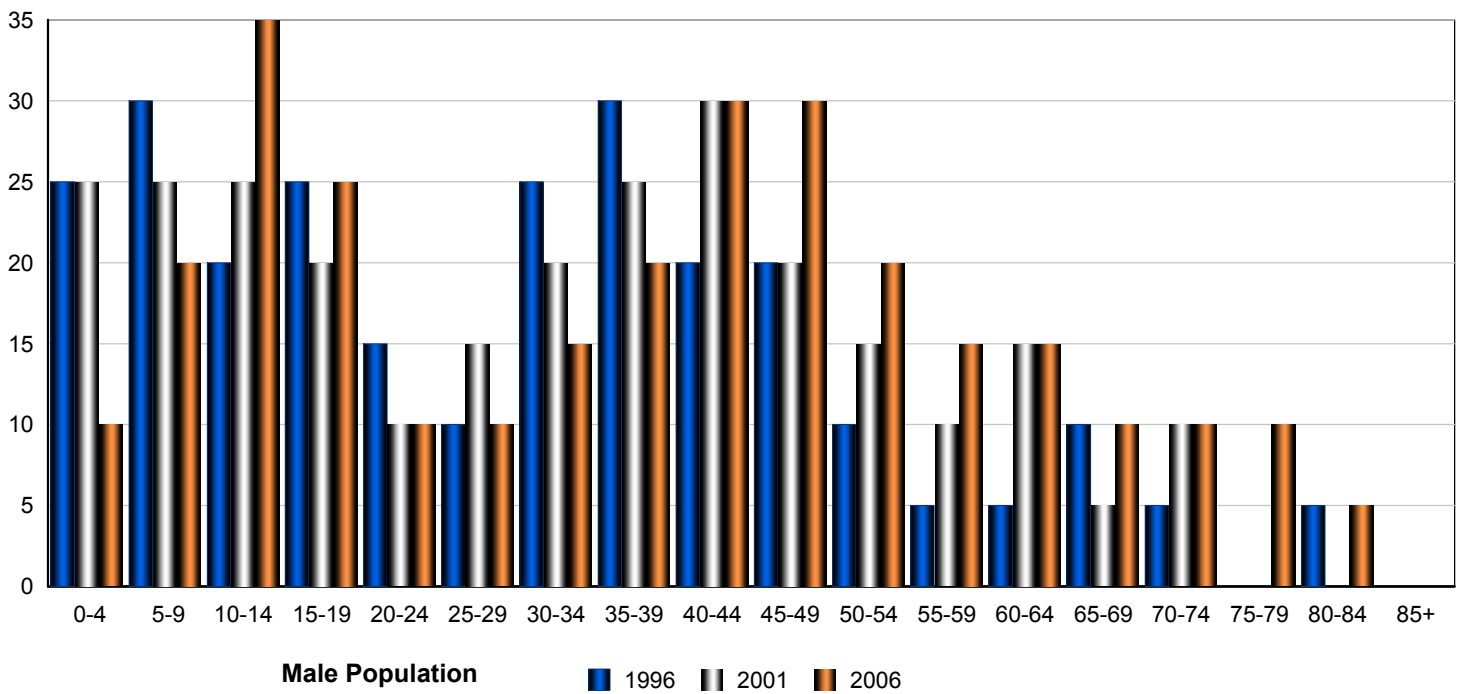
Source: Statistics Canada 2007.  
Clive, Alberta. 2006 Community Profiles. 2006 Census.  
Statistics Canada Catalogue no. 92-591-XWE. Ottawa. Released March 13, 2007.

## Total Population by Gender and Age - Clive

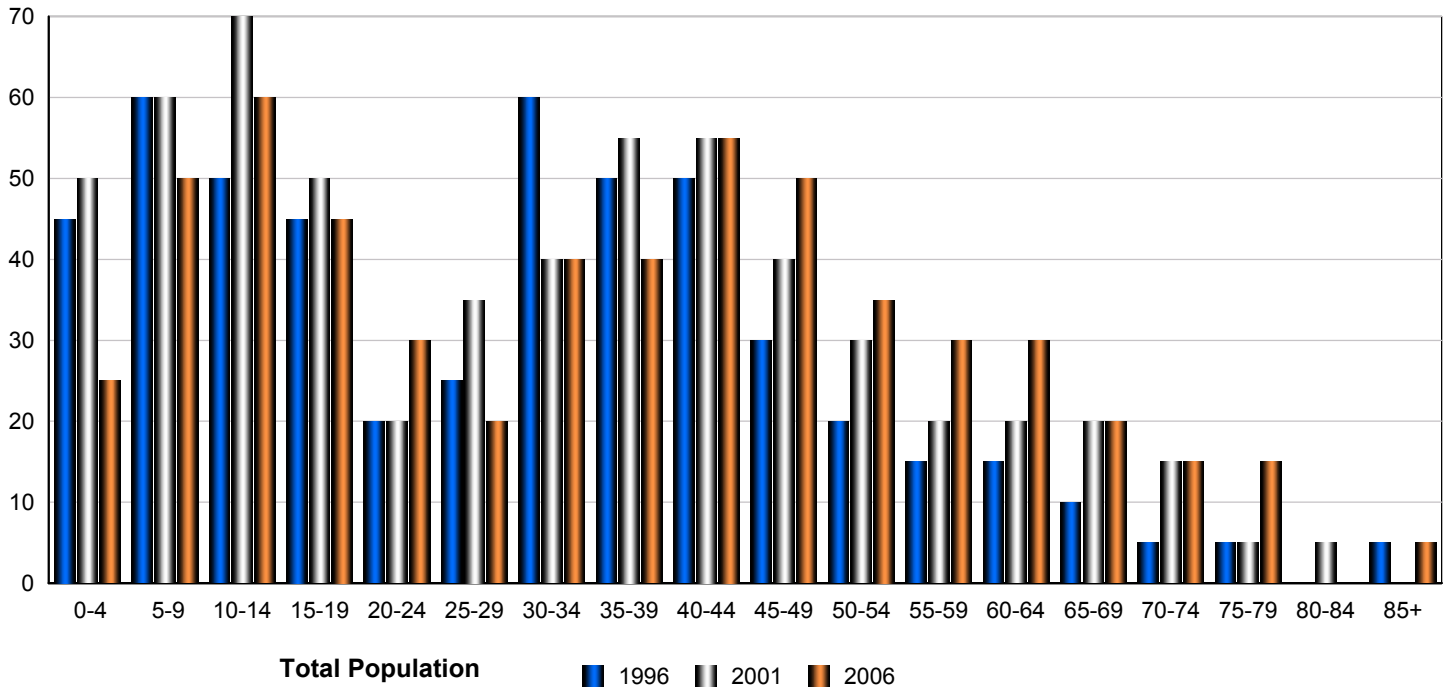
### Census Population by Gender - Clive



### Census Population by Gender - Clive



## Census Population by Gender - Clive



|              | Male       |            |            | Female     |            |            | Total      |            |            |
|--------------|------------|------------|------------|------------|------------|------------|------------|------------|------------|
|              | 2006       | 2001       | 1996       | 2006       | 2001       | 1996       | 2006       | 2001       | 1996       |
| 0-4          | 10         | 25         | 25         | 15         | 25         | 25         | 25         | 50         | 50         |
| 5-9          | 20         | 25         | 30         | 30         | 30         | 35         | 50         | 55         | 65         |
| 10-14        | 35         | 25         | 20         | 25         | 40         | 30         | 60         | 65         | 50         |
| 15-19        | 25         | 20         | 25         | 25         | 25         | 15         | 50         | 45         | 40         |
| 20-24        | 10         | 10         | 15         | 15         | 10         | 10         | 25         | 20         | 25         |
| 25-29        | 10         | 15         | 10         | 10         | 15         | 15         | 20         | 30         | 25         |
| 30-34        | 15         | 20         | 25         | 25         | 20         | 35         | 40         | 40         | 60         |
| 35-39        | 20         | 25         | 30         | 20         | 30         | 20         | 40         | 55         | 50         |
| 40-44        | 30         | 30         | 20         | 30         | 25         | 25         | 60         | 55         | 45         |
| 45-49        | 30         | 20         | 20         | 20         | 15         | 10         | 50         | 35         | 30         |
| 50-54        | 20         | 15         | 10         | 15         | 10         | 15         | 35         | 25         | 25         |
| 55-59        | 15         | 10         | 5          | 10         | 10         | 5          | 25         | 20         | 10         |
| 60-64        | 15         | 15         | 5          | 10         | 10         | 10         | 25         | 25         | 15         |
| 65-69        | 10         | 5          | 10         | 10         | 10         | 0          | 20         | 15         | 10         |
| 70-74        | 10         | 10         | 5          | 10         | 5          | 0          | 20         | 15         | 5          |
| 75-79        | 10         | 0          | 0          | 5          | 5          | 5          | 15         | 5          | 5          |
| 80-84        | 5          | 0          | 5          | 0          | 5          | 0          | 5          | 5          | 5          |
| 85-89        | 0          | 0          | 0          | 0          | 5          | 5          | 0          | 5          | 5          |
| <b>Total</b> | <b>290</b> | <b>270</b> | <b>260</b> | <b>275</b> | <b>295</b> | <b>260</b> | <b>565</b> | <b>565</b> | <b>520</b> |

Source: Statistics Canada 2007.  
 Clive, Alberta. 2006 Community Profiles. 2006 Census.  
 Statistics Canada Catalogue no. 92-591-XWE. Ottawa. Released March 13, 2007.

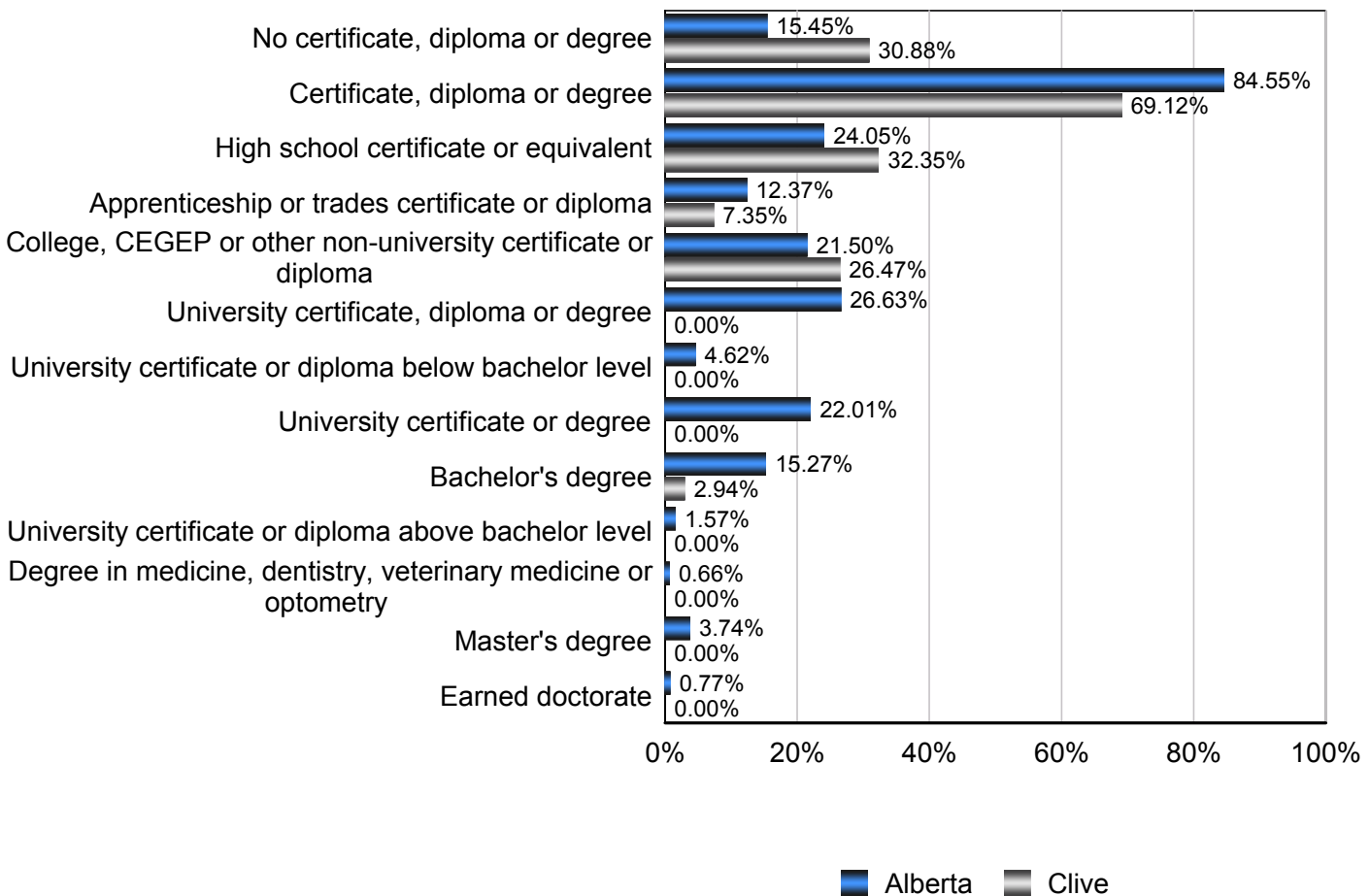
## Education Statistics

### Highest Level of Schooling, Population Aged 25-64 - Clive (2006)

% of Population Aged 25-64

| Highest Level of Schooling                                      | Clive  | Alberta |
|-----------------------------------------------------------------|--------|---------|
| No certificate, diploma or degree                               | 30.88% | 15.45%  |
| Certificate, diploma or degree                                  | 69.12% | 84.55%  |
| High school certificate or equivalent                           | 32.35% | 24.05%  |
| Apprenticeship or trades certificate or diploma                 | 7.35%  | 12.37%  |
| College, CEGEP or other non-university certificate or diploma   | 26.47% | 21.50%  |
| University certificate, diploma or degree                       | 0.00%  | 26.63%  |
| University certificate or diploma below bachelor level          | 0.00%  | 4.62%   |
| University certificate or degree                                | 0.00%  | 22.01%  |
| Bachelor's degree                                               | 2.94%  | 15.27%  |
| University certificate or diploma above bachelor level          | 0.00%  | 1.57%   |
| Degree in medicine, dentistry, veterinary medicine or optometry | 0.00%  | 0.66%   |
| Master's degree                                                 | 0.00%  | 3.74%   |
| Earned doctorate                                                | 0.00%  | 0.77%   |

### Amount by Which the Highest Level of Schooling - Clive vs Provincial Average (2006)

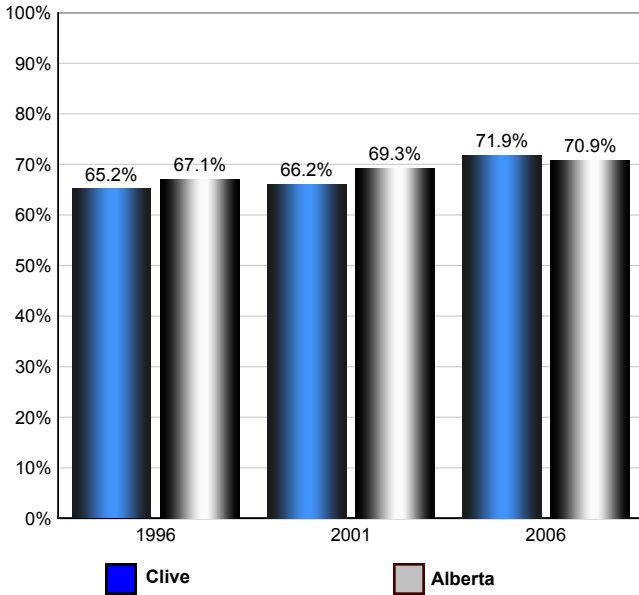


Source: Statistics Canada 2007.  
 Alberta, Alberta. 2006 Community Profiles. 2006 Census.  
 Statistics Canada Catalogue no. 92-591-XWE. Ottawa. Released March 13, 2007.

## Labour Force

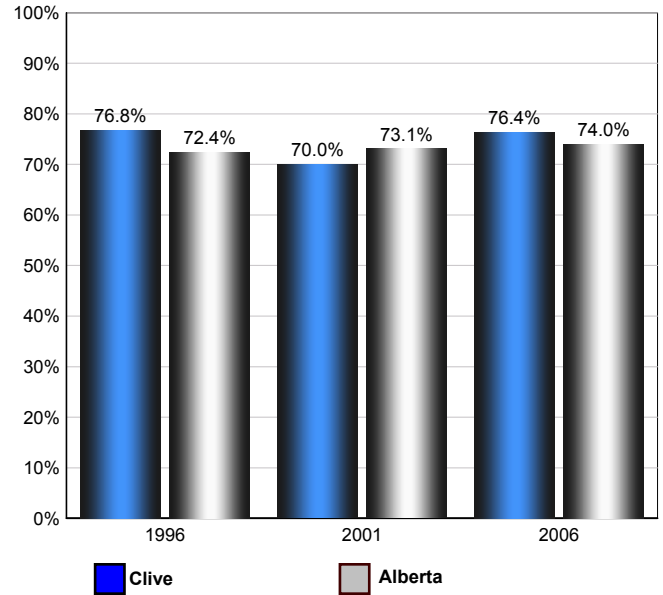
### Annual Labour Force Activity Rates - Clive vs Alberta

#### Employment Rate



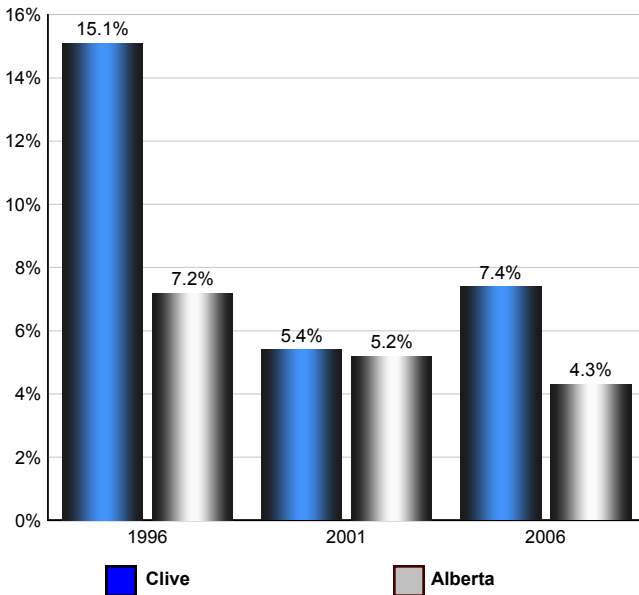
*Employment Rate is calculated by dividing the total employed by the total population 15 and over*

#### Participation Rate



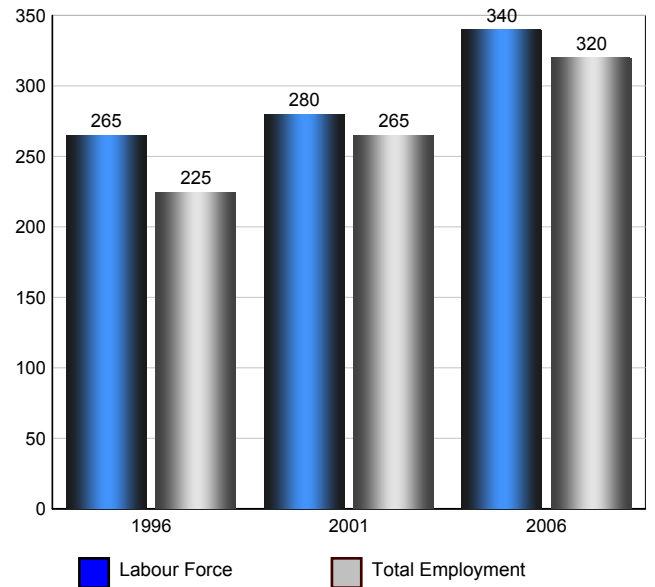
*The Participation rate is calculated by summing together the number employed and unemployed and dividing the result by the total population aged 15 and over*

#### Unemployment Rate



*The Unemployment rate is calculated by dividing the total number of persons in the labour force that are reported as being unemployed by the total labour force.*

#### Clive Labour Force and Total Employment (Age 15+)



*Source: Statistics Canada 2007. Clive, Alberta. 2006 Community Profiles. 2006 Census. Statistics Canada Catalogue no. 92-591-XWE. Ottawa. Released March 13, 2007.*

## Labour Force Age 15+ - Clive (2006)

### Industry by Gender

| Industry                                                              | Males      | Females    | Total      |
|-----------------------------------------------------------------------|------------|------------|------------|
| Agriculture, Forestry, Fishing and Hunting                            | 0          | 0          | 0          |
| Mining, Oil and Gas Extraction                                        | 75         | 10         | 85         |
| Utilities                                                             | 0          | 0          | 0          |
| Construction                                                          | 50         | 15         | 65         |
| Manufacturing                                                         | 20         | 20         | 40         |
| Wholesale Trade                                                       | 0          | 0          | 0          |
| Retail Trade                                                          | 0          | 35         | 35         |
| Transportation and Warehousing                                        | 10         | 0          | 10         |
| Information and Cultural Industries                                   | 0          | 0          | 0          |
| Finance and Insurance                                                 | 0          | 0          | 0          |
| Real Estate, Rental and Leasing                                       | 0          | 0          | 0          |
| Professional, Scientific and Technical Services                       | 0          | 10         | 10         |
| Management of Companies and Enterprises                               | 0          | 0          | 0          |
| Administrative and Support, Waste Management and Remediation Services | 10         | 20         | 30         |
| Educational services                                                  | 0          | 0          | 0          |
| Health care and social assistance                                     | 0          | 25         | 25         |
| Arts, Entertainment and Recreation                                    | 10         | 0          | 10         |
| Accommodation and Food Services                                       | 0          | 10         | 10         |
| Other Services (except Public Administration)                         | 10         | 10         | 20         |
| Public Administration                                                 | 0          | 0          | 0          |
| <b>Total</b>                                                          | <b>185</b> | <b>155</b> | <b>340</b> |

Source: Statistics Canada 2007.  
Clive, Alberta. 2006 Community Profiles. 2006 Census.  
Statistics Canada Catalogue no. 92-591-XWE. Ottawa. Released March 13, 2007.

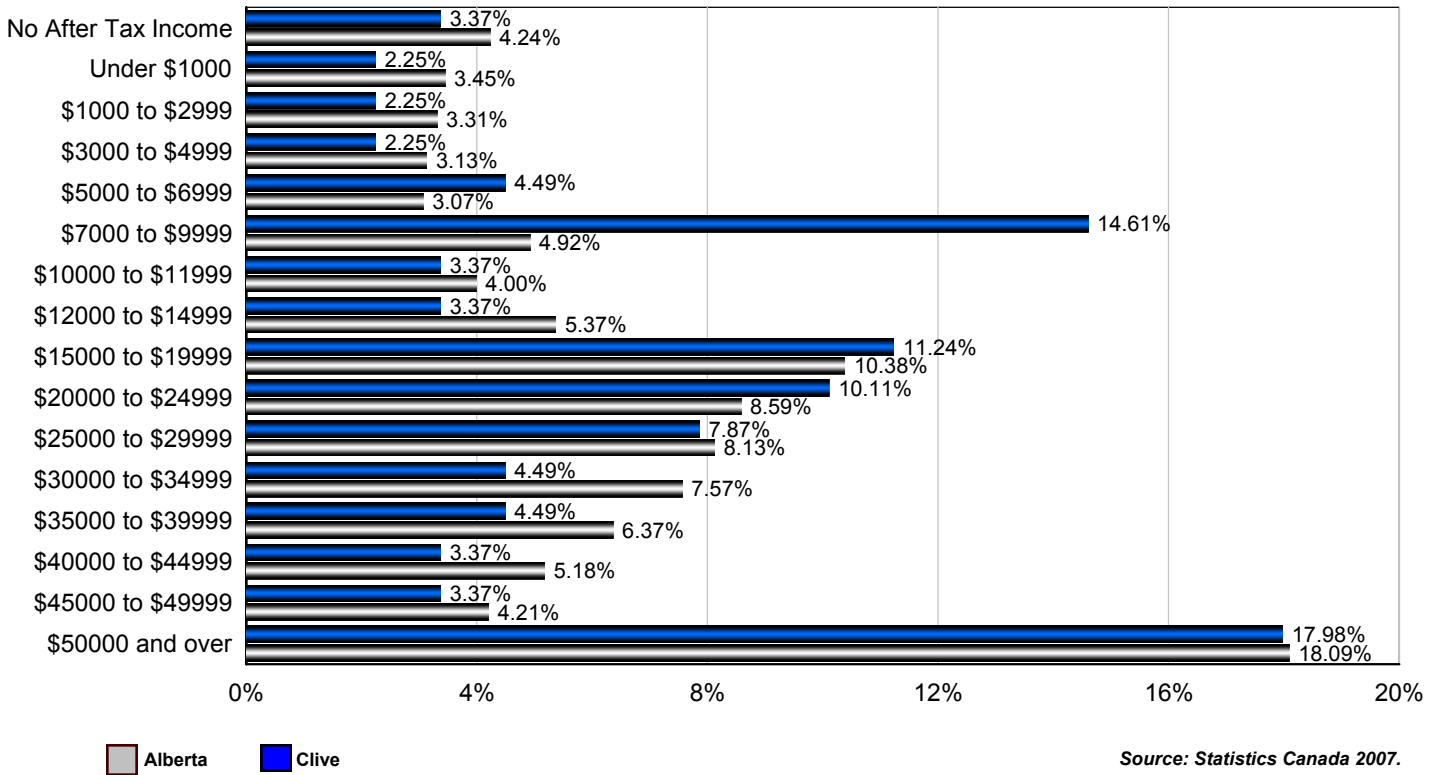
### Occupation by Gender

| Occupation                                                        | Males      | Females    | Total      |
|-------------------------------------------------------------------|------------|------------|------------|
| Management Occupations                                            | 0          | 0          | 0          |
| Business, Finance and Administration Occupations                  | 0          | 35         | 35         |
| Natural and Applied Sciences and Related Occupations              | 15         | 20         | 35         |
| Health Occupations                                                | 0          | 15         | 15         |
| Occupations in Social Science, Education, Government Service      | 0          | 10         | 10         |
| Occupations in Art, Culture, Recreation and Sport                 | 0          | 0          | 0          |
| Sales and Service Occupations                                     | 0          | 70         | 70         |
| Trades, Transport and Equipment Operators and Related Occupations | 95         | 0          | 95         |
| Occupations Unique to Primary                                     | 40         | 0          | 40         |
| Occupations Unique to Processing, Manufacturing and Utilities     | 20         | 0          | 20         |
| <b>Total</b>                                                      | <b>170</b> | <b>150</b> | <b>320</b> |

Source: Statistics Canada 2007.  
Clive, Alberta. 2006 Community Profiles. 2006 Census.  
Statistics Canada Catalogue no. 92-591-XWE. Ottawa. Released March 13, 2007.

Income

Percent of Population 15+ by Income Bracket - Clive vs Alberta (2005)



Source: Statistics Canada 2007.  
Clive, Alberta. 2006 Community Profiles. 2006 Census.  
Statistics Canada Catalogue no. 92-591-XWE. Ottawa. Released March 13, 2007.

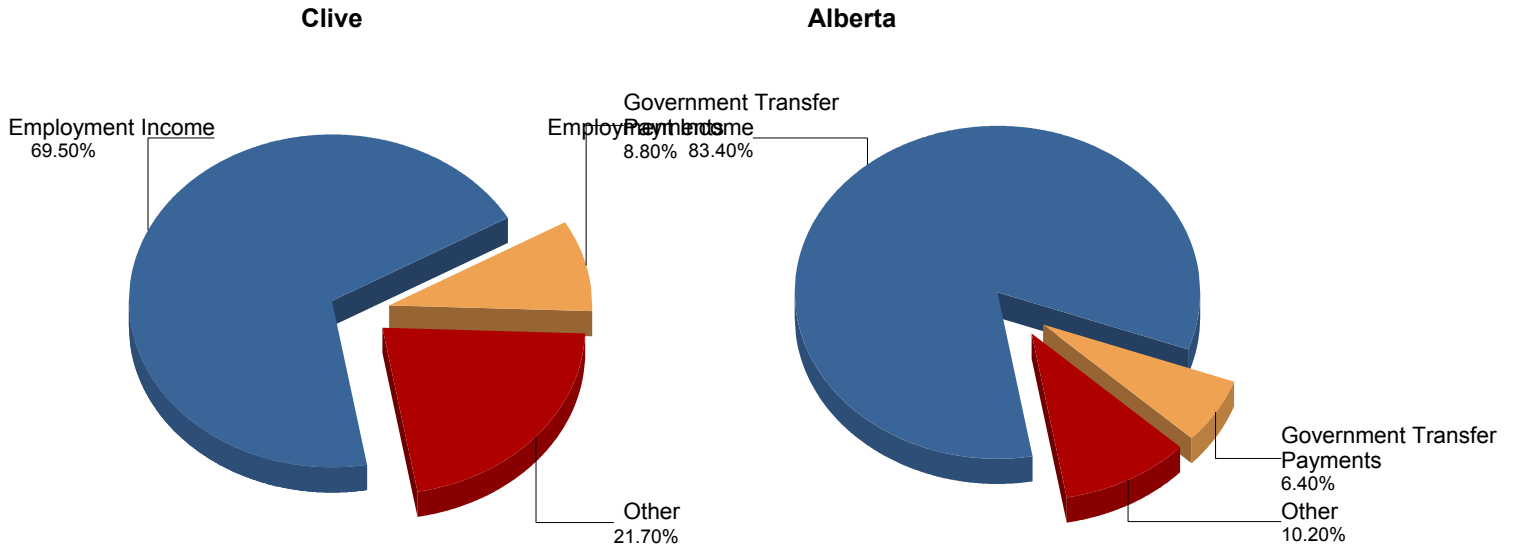
Population 15+ by Total After Tax Income - Clive (2005)

|                          | Males      | Females    | Total      |
|--------------------------|------------|------------|------------|
| Without After-Tax Income | 10         | 10         | 20         |
| Under \$1,000            | 0          | 10         | 10         |
| \$1,000 to \$2,999       | 0          | 10         | 10         |
| \$3,000 to \$4,999       | 0          | 10         | 10         |
| \$5,000 to \$6,999       | 0          | 20         | 20         |
| \$7,000 to \$9,999       | 0          | 65         | 65         |
| \$10,000 to \$11,999     | 0          | 10         | 10         |
| \$12,000 to \$14,999     | 10         | 10         | 20         |
| \$15,000 to \$19,999     | 15         | 25         | 40         |
| \$20,000 to \$24,999     | 25         | 20         | 45         |
| \$25,000 to \$29,999     | 15         | 20         | 35         |
| \$30,000 to \$34,999     | 15         | 10         | 25         |
| \$35,000 to \$39,999     | 20         | 0          | 20         |
| \$40,000 to \$44,999     | 10         | 10         | 20         |
| \$45,000 to \$49,999     | 15         | 0          | 15         |
| \$50,000 and over        | 75         | 0          | 75         |
| <b>Total</b>             | <b>215</b> | <b>225</b> | <b>445</b> |

Due to rounding consolidating the shown income brackets may lead to errors. Such errors would be most pronounced for small communities.

Source: Statistics Canada 2007.  
Clive, Alberta. 2006 Community Profiles. 2006 Census.  
Statistics Canada Catalogue no. 92-591-XWE. Ottawa. Released March 13, 2007.

## Composition of Family Income for Economic Families - Clive vs Alberta (2005)



Economic family total income - The total income of an economic family is the sum of the total incomes of all members of that family.

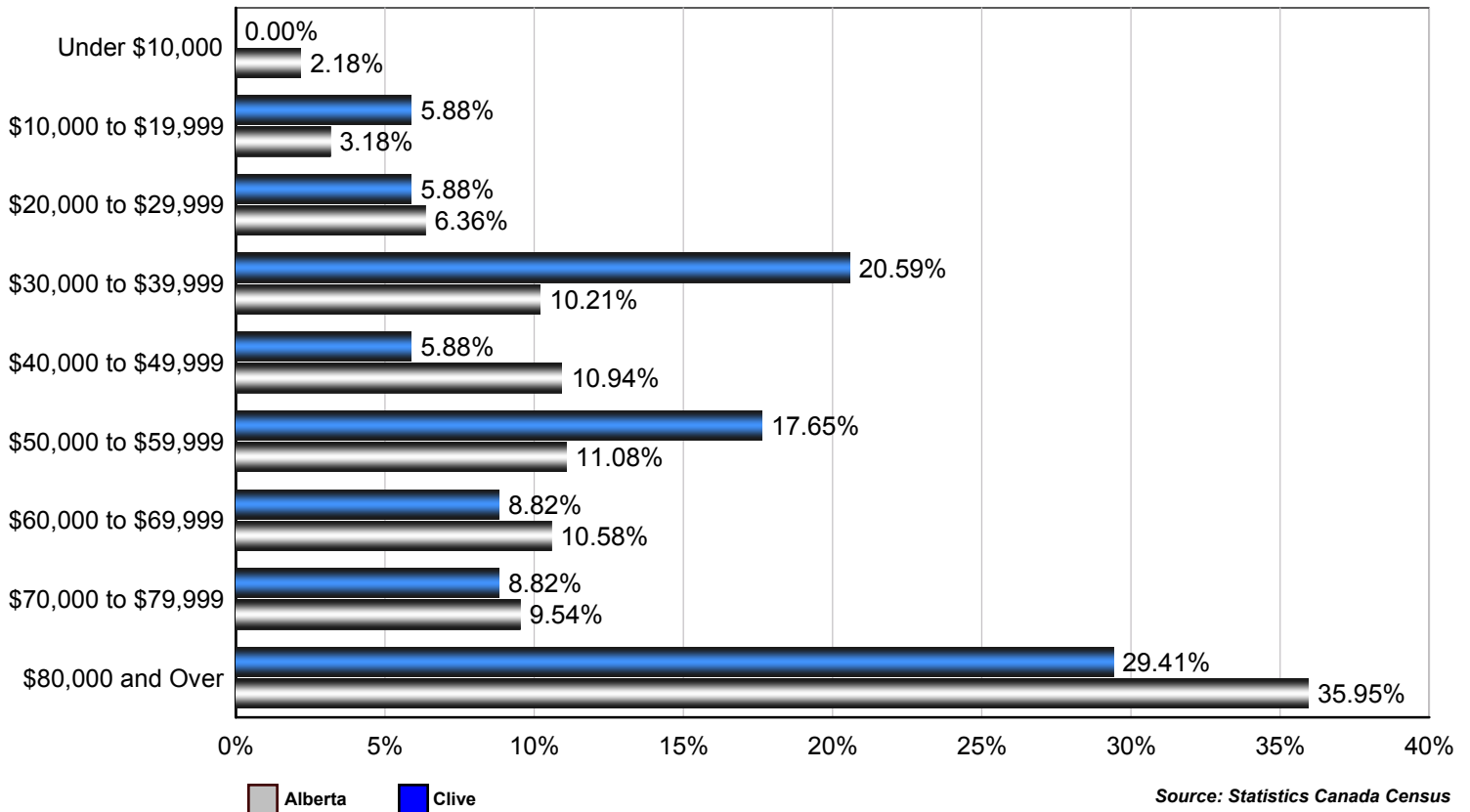
Source: Statistics Canada 2007.  
Clive, Alberta. 2006 Community Profiles. 2006 Census.  
Statistics Canada Catalogue no. 92-591-XWE. Ottawa. Released March 13, 2007.

## Population 15+ With Employment Earnings - Clive (2005)

|                                     | Males    | Females  | Total    |
|-------------------------------------|----------|----------|----------|
| Earnings - As a % of total Earnings | 84%      | 71%      | 80%      |
| Median Employment Earnings          | \$42,142 | \$5,876  | \$18,527 |
| Average Employment Earnings         | \$44,350 | \$10,023 | \$28,277 |

Source: Statistics Canada 2007.  
Clive, Alberta. 2006 Community Profiles. 2006 Census.  
Statistics Canada Catalogue no. 92-591-XWE. Ottawa. Released March 13, 2007.

## Percent of Total Economic Families by After-tax Income Brackets - Clive vs Alberta (2005)



## Number of Economic Families by After-tax Income Brackets - Clive (2005)

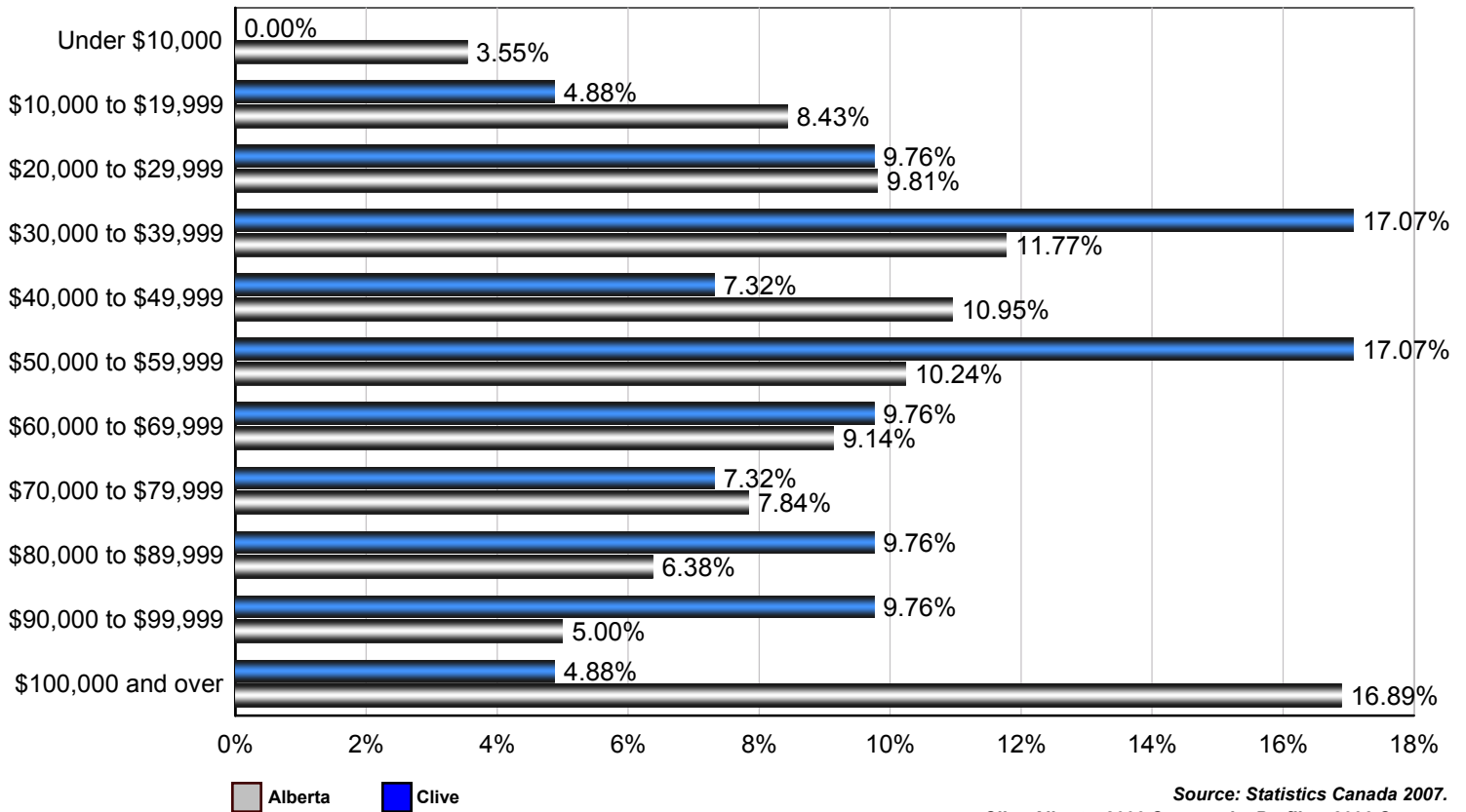
| Income Bracket       | Number of Families |
|----------------------|--------------------|
| Under \$10,000       | 0                  |
| \$10,000 to \$19,999 | 10                 |
| \$20,000 to \$29,999 | 10                 |
| \$30,000 to \$39,999 | 35                 |
| \$40,000 to \$49,999 | 10                 |
| \$50,000 to \$59,999 | 30                 |
| \$60,000 to \$69,999 | 15                 |
| \$70,000 to \$79,999 | 15                 |
| \$80,000 and over    | 50                 |
| <b>Total</b>         | <b>170</b>         |

| Family Income                   |          |
|---------------------------------|----------|
| Median After-Tax Family Income  | \$53,444 |
| Average After-Tax Family Income | \$63,369 |

Due to rounding consolidating the shown income brackets may lead to errors. Such errors would be most pronounced for small communities.

Source: Statistics Canada 2007.  
Clive, Alberta. 2006 Community Profiles. 2006 Census.  
Statistics Canada Catalogue no. 92-591-XWE. Ottawa. Released March 13, 2007.

## Percent of Total Private Households by After-tax Income Brackets - Clive vs Alberta (2005)



Source: Statistics Canada 2007.  
Clive, Alberta. 2006 Community Profiles. 2006 Census.  
Statistics Canada Catalogue no. 92-591-XWE. Ottawa. Released March 13, 2007.

## Number of Private Households by After-tax Income Brackets - Clive (2005)

| Income Bracket       | Number of Families |
|----------------------|--------------------|
| Under \$10,000       | 0                  |
| \$10,000 to \$19,999 | 10                 |
| \$20,000 to \$29,999 | 20                 |
| \$30,000 to \$39,999 | 35                 |
| \$40,000 to \$49,999 | 15                 |
| \$50,000 to \$59,999 | 35                 |
| \$60,000 to \$69,999 | 20                 |
| \$70,000 to \$79,999 | 15                 |
| \$80,000 to \$89,999 | 20                 |
| \$90,000 to \$99,999 | 20                 |
| \$100,000 and Over   | 10                 |
| <b>Total</b>         | <b>205</b>         |

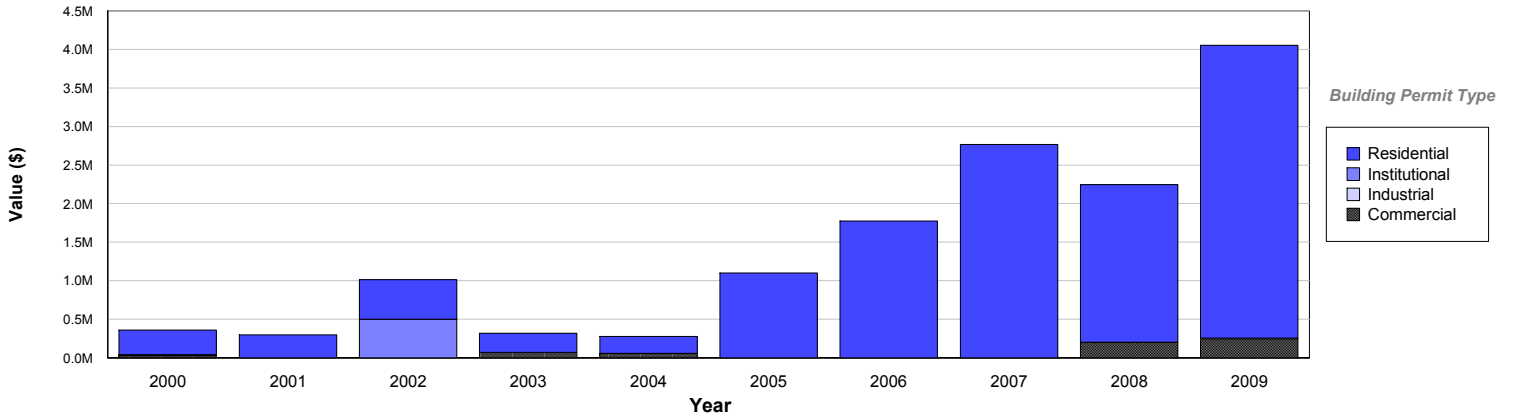
| Family Income                   |          |
|---------------------------------|----------|
| Median After-Tax Family Income  | \$52,895 |
| Average After-Tax Family Income | \$58,463 |

Due to rounding consolidating the shown income brackets may lead to errors. Such errors would be most pronounced for small communities.

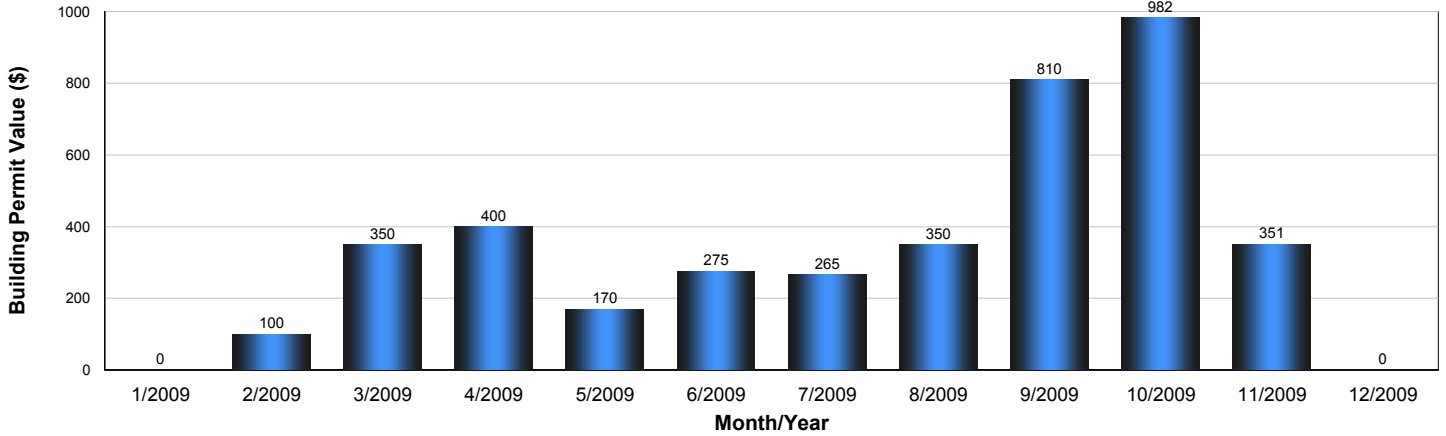
Source: Statistics Canada Census

## Building Permits

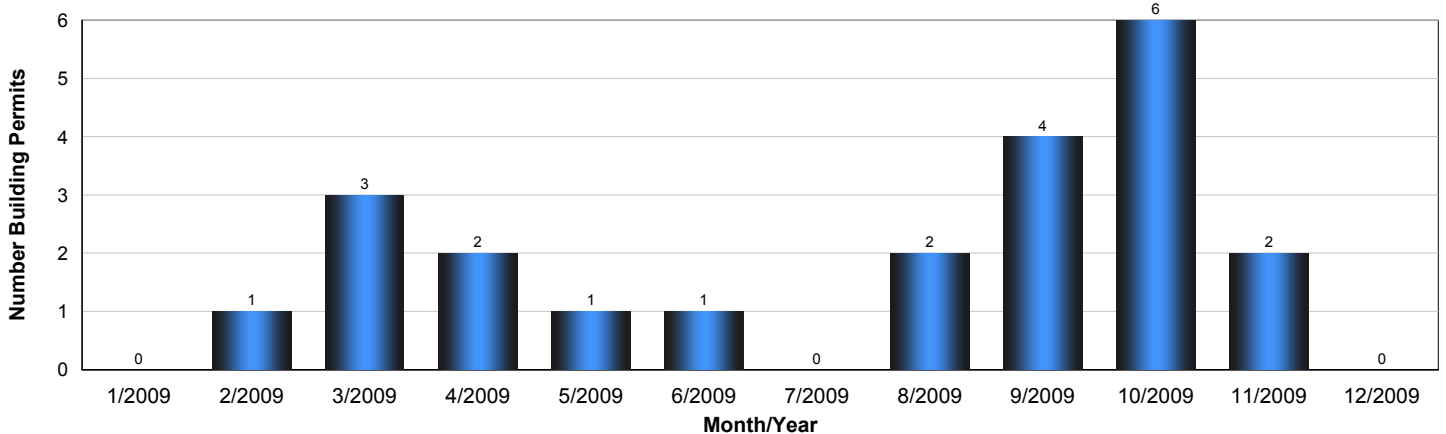
### Value of Building Permits - Clive



| Year | Residential | Industrial | Commercial | Institutional | Total       |
|------|-------------|------------|------------|---------------|-------------|
| 2009 | \$3,796,000 | \$17,000   | \$240,000  | \$0           | \$4,053,000 |
| 2008 | \$2,046,000 | \$0        | \$200,000  | \$0           | \$2,246,000 |
| 2007 | \$2,767,000 | \$0        | \$0        | \$0           | \$2,767,000 |
| 2006 | \$1,775,000 | \$0        | \$0        | \$0           | \$1,775,000 |
| 2005 | \$1,099,000 | \$0        | \$0        | \$0           | \$1,099,000 |
| 2004 | \$223,000   | \$0        | \$55,000   | \$0           | \$278,000   |
| 2003 | \$247,000   | \$0        | \$70,000   | \$0           | \$317,000   |
| 2002 | \$511,000   | \$0        | \$0        | \$500,000     | \$1,011,000 |
| 2001 | \$295,000   | \$0        | \$0        | \$0           | \$295,000   |
| 2000 | \$317,000   | \$10,000   | \$30,000   | \$0           | \$357,000   |



### Number of Building Permits - Clive

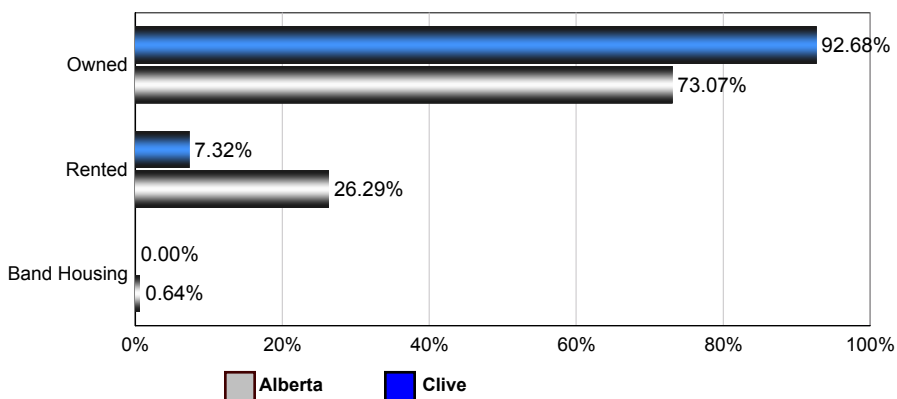


Source: Statistics Canada, Building Permits / Permis de bâtir, Publication 64-001-XWF, 2000 - 2009.

## Dwellings

### Number of Occupied Private Dwellings by Ownership - Clive

Clive vs Alberta (2006)



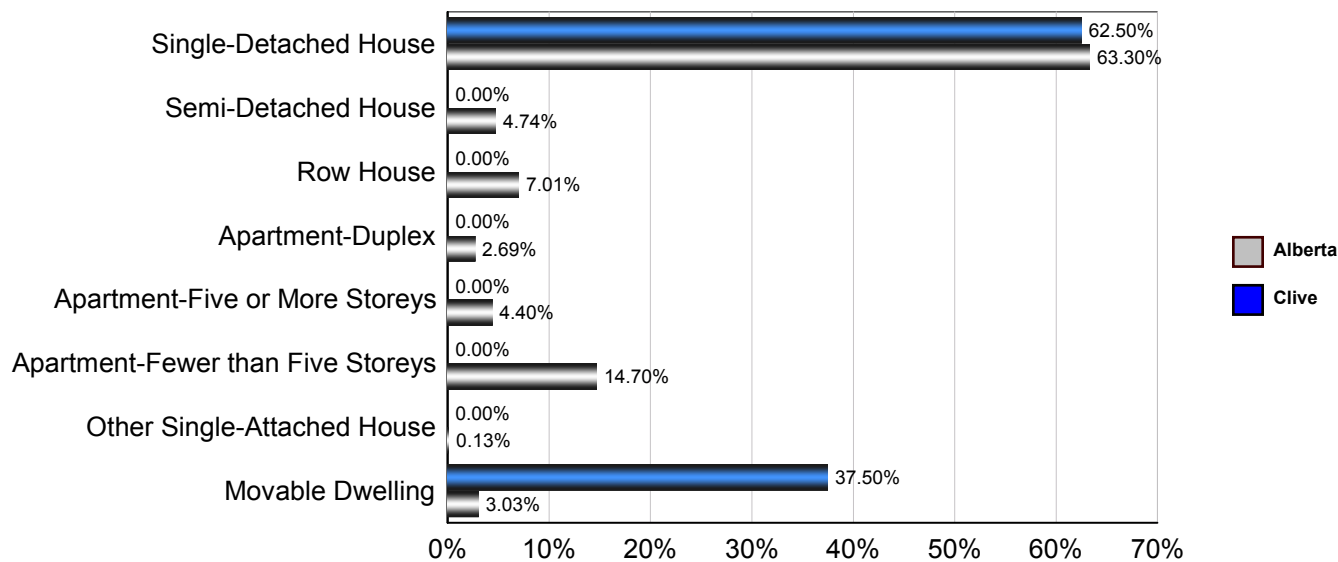
Clive

|              | 1996       | 2001       | 2006       |
|--------------|------------|------------|------------|
| Owned        | 170        | 165        | 190        |
| Rented       | 0          | 30         | 15         |
| Band Housing | 0          | 0          | 0          |
| <b>Total</b> | <b>170</b> | <b>195</b> | <b>205</b> |

Source: Statistics Canada 2007.  
Clive, Alberta. 2006 Community Profiles. 2006 Census.  
Statistics Canada Catalogue no. 92-591-XWE. Ottawa. Released March 13, 2007.

### Number of Occupied Private Dwellings by Structural Type - Clive

Clive vs Alberta (2006)



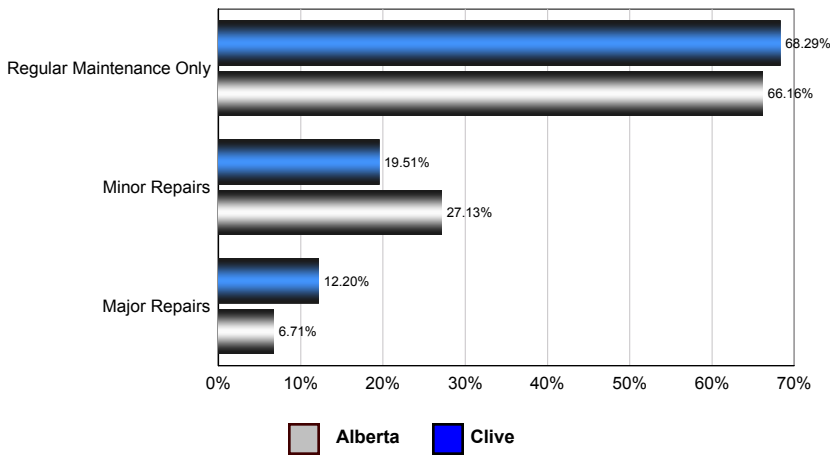
Clive

|                                     | 1996       | 2001       | 2006       |
|-------------------------------------|------------|------------|------------|
| Single-Detached House               | 130        | 120        | 125        |
| Semi-Detached House                 | 0          | 0          | 0          |
| Row House                           | 0          | 0          | 0          |
| Apartment - Duplex                  | 10         | 5          | 0          |
| Apartment - Five or More Storeys    | 0          | 0          | 0          |
| Apartment - Fewer than Five Storeys | 10         | 0          | 0          |
| Other Single-Attached House         | 0          | 0          | 0          |
| Movable Dwelling                    | 25         | 70         | 75         |
| <b>Total</b>                        | <b>175</b> | <b>195</b> | <b>200</b> |

Source: Statistics Canada 2007.  
Clive, Alberta. 2006 Community Profiles. 2006 Census.  
Statistics Canada Catalogue no. 92-591-XWE. Ottawa. Released March 13, 2007.

## Number of Occupied Private Dwellings by the Condition of Dwelling - Clive

### Clive vs Alberta (2006)



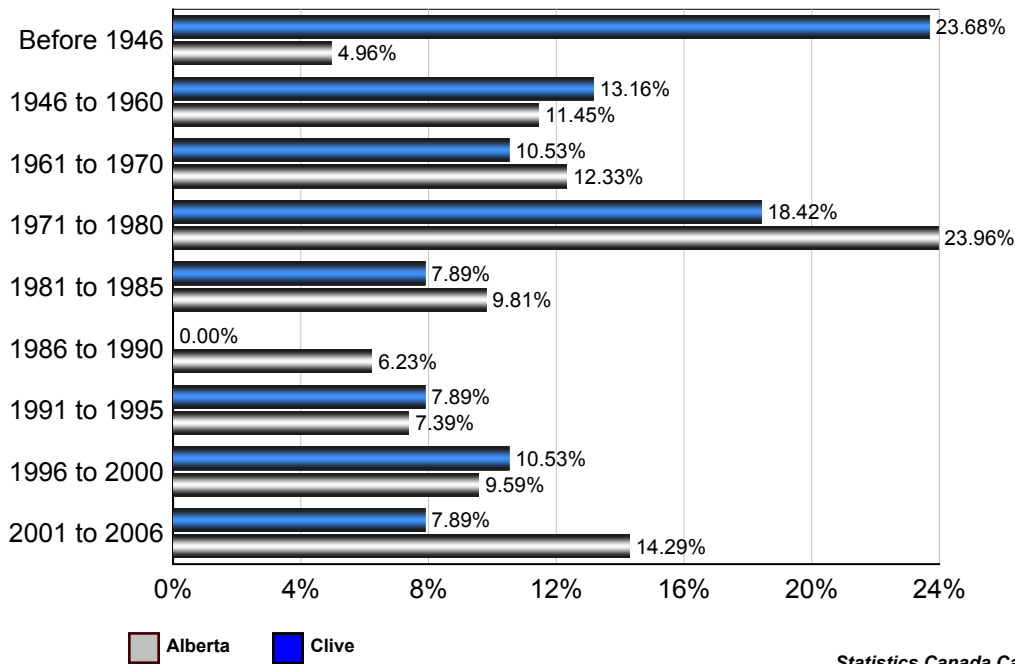
### Clive

|                          | 1996       | 2001       | 2006       |
|--------------------------|------------|------------|------------|
| Regular Maintenance Only | 70         | 115        | 140        |
| Minor repairs            | 80         | 75         | 40         |
| Major repairs            | 25         | 0          | 25         |
| <b>Total</b>             | <b>175</b> | <b>190</b> | <b>205</b> |

Source: Statistics Canada 2007.  
Clive, Alberta. 2006 Community Profiles. 2006 Census.  
Statistics Canada Catalogue no. 92-591-XWE. Ottawa. Released March 13, 2007.

## Number of Occupied Private Dwellings by Period of Construction - Clive

### Clive vs Alberta (2006)



### Clive

|              | 2006       |
|--------------|------------|
| Before 1946  | 45         |
| 1946 to 1960 | 25         |
| 1961 to 1970 | 20         |
| 1971 to 1980 | 35         |
| 1981 to 1985 | 15         |
| 1986 to 1990 | 0          |
| 1991 to 1995 | 15         |
| 1996 to 2000 | 20         |
| 2001 to 2006 | 15         |
| <b>Total</b> | <b>190</b> |

Source: Statistics Canada 2007.  
Clive, Alberta. 2006 Community Profiles. 2006 Census.  
Statistics Canada Catalogue no. 92-591-XWE. Ottawa. Released March 13, 2007.

