

Dewberry

Welcome

Welcome to our community. We hope the information contained within this profile is useful. If additional information is required, please contact our representative from the "Key Contacts" section.

Area Overview

The Village of Dewberry -- the spirit of the country - is situated at the junction of Highway 45 and Secondary Highway 893, linking to Highway 41 to the west and Highway 16 to the south. It is within a short commuting distance to Elk Point, Vermilion and Lloydminster. The first settlers came to the district in 1906 and the Village was incorporated in 1957. Dewberry is named after the abundance of "dewberries" found in the area in the early years. Dewberry is fortunate to be located in a prime agricultural area with heavy oil activity, both of which provide employment opportunities. Dewberry is also fortunate to have a varied business sector in the Village to meet the needs of the residents and surrounding communities. Several service organizations and churches are active in the Village, with the Dewberry Valley Museum being a highlight for tourists. Land is available for both residential and light industrial/commercial development. Dewberry is a village of enthusiasm and determination, providing a community of unique Country Spirit!

Location

The Village of Dewberry is located in the County of Vermilion River No. 24. It is 250 km east of Edmonton, and within short commuting distance of Elk Point, Vermilion and Lloydminster.

Economic Base

The main economic base of the Dewberry area is agriculture, as well as heavy oil.

Economic Facts

Local businesses include a machinery dealership, bulk fuel agent, veterinary services, wood-working, groceries, hair care, auto repair, and hotel services. Major Businesses/Products/Services NANA Financial Institutions Dewberry Credit Union

Utilities

Electrical Power Alberta Power Ltd. 6208 - 48th Street Lloydminster, Alberta Tel: 403-875-3331 Natural Gas County of Vermilion River No. 24 4912 - 50 Avenue Kitscoty, Alberta Tel: 403-846-2244 Telephone Alberta Government Telephones Ltd. Box 2422 Edmonton, Alberta T5J 2T5 Tel: 403-310-2255 Water Supply The water supply is administered by the Village of Dewberry. Waste Management Dewberry is part of the Vermilion River Regional Solid Waste Management Authority.

Taxation

	<u>Residential/Farmland</u>	<u>Non-Residential</u>
2004		
Municipal Tax Rate	17.9000	17.9000
Education - Alberta School Foundation Fund Tax Rate	4.7900	7.9400

Mill Rates [1995] Residential - Public N/A Residential - Separate N/A Non-Residential - Public N/A Non-Residential - Separate N/A

Transportation

Air Services The nearest airport is the Lloydminster Municipal Airport, which has a 1,525 metre runway and all-weather facilities. Local carriers include Air BC [daily service to Calgary]. Rail Services Dewberry is served by Canadian Pacific Railways. Highways Connecting highways include Secondary Highway 893, leading north to Heinsburg and south to Highway 16, and Highway 45, leading west to Highway 41 and east to Marwayne. Trucking Firms N/A Bus Services Quality Time Tours provides regular bus service to Dewberry. Couriers and Taxis Loomis and Rurolator Couriers

Community Lifestyle

Recreation Local recreational facilities include three ball diamonds, an ice arena [minor hockey, seniors hockey, figure skating], soccer fields on the school grounds, and a 3-sheet artificial ice curling rink. Facilities for seniors include the Dewberry Senior Citizens Centre [Tel: 403-847-4067]. There are three local community halls, the Dewberry Hall, Riverton Hall and the Greenlaw Hall. Park areas include Sidney Blair Memorial Day Park, which has a play area and camp kitchen, and Hazeldine Campsite, located 5 km east of the Village [camp kitchen, overnight parking]. Community Organizations Dewberry Agricultural Society [Tel: 403-847-2019] Dewberry Board of Trade [Tel: 403-847-3053] Dewberry Cemetery Association

[Tel: 403-847-2336] Dewberry Lions Club [Tel: 403-847-2169] Greenlaw n Goodwill Club [Tel: 403-847-3892] Riverton Ladies Club [Tel: 403-847-2370] Dewberry Cultural Connections [Tel: 403-847-2691] Dewberry Lion's L's [Tel: 403-847-2513] Dewberry Senior Citizens [Tel: 403-847-4067] Dewberry Horticulture Club [Tel: 403-847-3061] Religious Services Dewberry Community Church Special Annual Events/Attractions Dewberry Valley Museum Annual Events: Skidoo Rally, Men's Curling Bonspiel -- January Ladies Curling Bonspiel, Mixed Curling Bonspiel -- February Canskate - Canfigure Carnival -- March Lion L's Fashion Show -- April Dewberry School Graduation, Minor Ball Tournament -- May CPCA Chuckwagon Races -- June Mini-Fair and Parade -- August Award Night and Turkey Supper -- October Christmas Craft Sale -- November Snowflake Days -- December Hospitality Accommodation Dewberry Hotel Restaurants Dewberry Hotel Restaurant Dewberry Coffee Shop

Education

Dewberry is part of the Buffalo Trail Regional School Division No. 28, headquartered in Wainwright [Tel: 403-842-6144]. Daycare/Nursery Dewberry Community Church provides MOPS [Mothers of Pre-Schoolers] twice monthly [Tel: 403-847-2687]. Public Dewberry School [Tel: 403-847-3051] provides education for Grades K to 12. Special education for elementary, junior high school and senior high school students is available. Separate NA Private NA

Post Secondary

Adult education programs are available from the Vermilion River Further Education Council. Other post-secondary education is available at the Lloydminster campus of Lakeland College.

Health Care

There is a clinic in Dewberry one day per week. Local facilities for seniors include Dewberry Heritage Villas, which offers subsidized housing for seniors. Other hospital and medical services are available in Lloydminster, Vermilion and Elk Point. For example, the Lloydminster Hospital has 118 beds, while the auxiliary hospital has 75 beds. Other facilities in Lloydminster include 6 medical clinics, 10 dentists, 20 doctors, 4 optometrists, 4 chiropractors, 2 surgeons, 2 long-term care facilities, 1 home care service and 6 senior's lodges.

Emergency Services

Fire Protection Dewberry is served by a local volunteer fire department [Tel: 403-847-4006], and also has a county truck located within the Village [Emergency Tel: 403-875-6246]. Police Services Dewberry is served by the Vermilion detachment of the Royal Canadian Mounted Police [RCMP] [Tel: 403-853-5781]. Ambulance Services Ambulance service is available from Vermilion [Tel: 403-853-4247].

Community Services

Municipal Village of Dewberry Box 30 Dewberry, Alberta T0B 1G0 Tel: 403-847-3053 Fax: 403-847-3062 Administration Public Works Provincial NA Federal Canada Post

Key Contacts

Municipal Village of Dewberry Box 30 Dewberry, Alberta T0B 1G0 Tel: 780-847-3053 Fax: 780-847-3062 Headley Dennial Mayor Anne Elliott Secretary Treasurer Provincial (Updated May 2001) [Alberta Economic Development](#) Box 412 Room 308, Provincial Building 5025 - 49 Avenue St. Paul, Alberta T0A 3A4 Tel: 780-645-6358 Fax: 780-645-6241 [Garry Krause](#), Regional Manager [Maryann Robinson](#), Client Service Representative Lloyd Snelgrove Member of the Legislative Assembly (MLA) Vermilion - Lloydminster Constituency Constituency Office 5036 - 49 Avenue Vermilion, AB T9X 1B7 Phone: (780) 875-5792 Phone: (780) 853-4202 Fax: (780) 853-5770 Toll Free Number: 1-800-567-7644 Vermilion.Lloydminster@assembly.ab.ca Legislature Office #503, 10800-97 Avenue Edmonton, AB T5K - 2B6 Phone: (780) 415-9425 Fax: (780) 422-1671 Federal (Updated May 2001) Leon E. Benoit Member of Parliament [MP] Lakeland Constituency House of Commons Ottawa, Ontario K1A 0A6 Tel: 613-992-4171 Constituency Office: P.O. Box 300 Mannville, Alberta T0B 2W0 Tel: 780-763-6130 Fax: 780-763-6132

Google Map



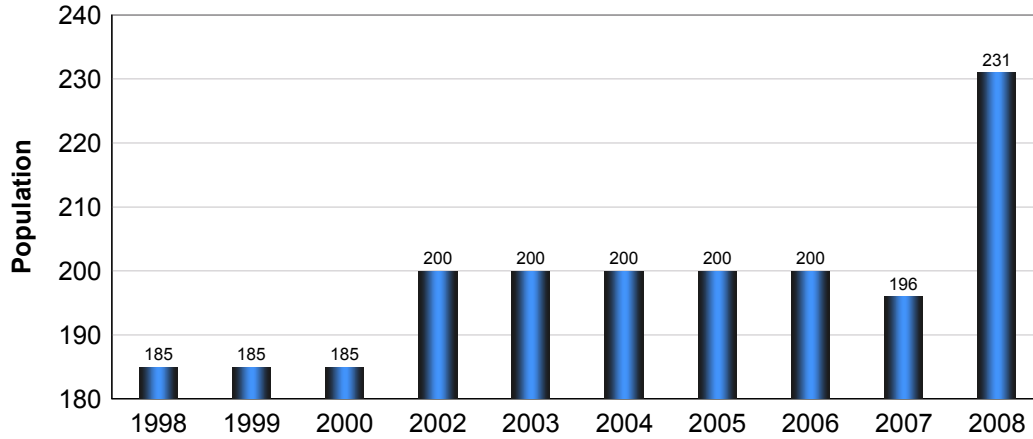
Disclaimer: Information in this profile has been provided from a variety of external sources. AlbertaFirst.com Ltd. provides this template, and each community posts their own content within the template. If you find inaccuracies or information you feel needs changing, please contact the community directly. Although every effort has been made to ensure the accuracy, currency and reliability of the content and data, AlbertaFirst.com Ltd. accepts no responsibility in this regard.

©AlbertaFirst.com Ltd., 2010.

A chart or table in this Profile may be blank. This will occur if there was no data available for that community for the specified time period

Municipal Population

Total Population - Dewberry

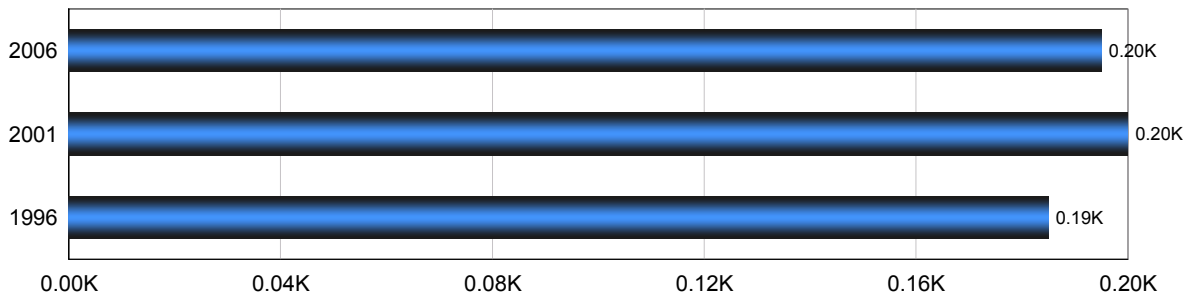


Year	Community Growth	Alberta Growth
2008	17.86%	2.37%
2007	(2.00)%	3.39%
2006	0.00%	1.95%
2005	0.00%	3.91%
2004	0.00%	0.95%
2003	0.00%	1.34%
2001	8.11%	4.02%
2000	0.00%	2.15%
1999	0.00%	3.24%
1998	0.00%	1.33%

Source: Statistics Canada 2007.
Dewberry, Alberta. 2006 Community Profiles. 2006 Census.
Statistics Canada Catalogue no. 92-591-XWE. Ottawa. Released March 13, 2007.

Population

Total Population - Dewberry

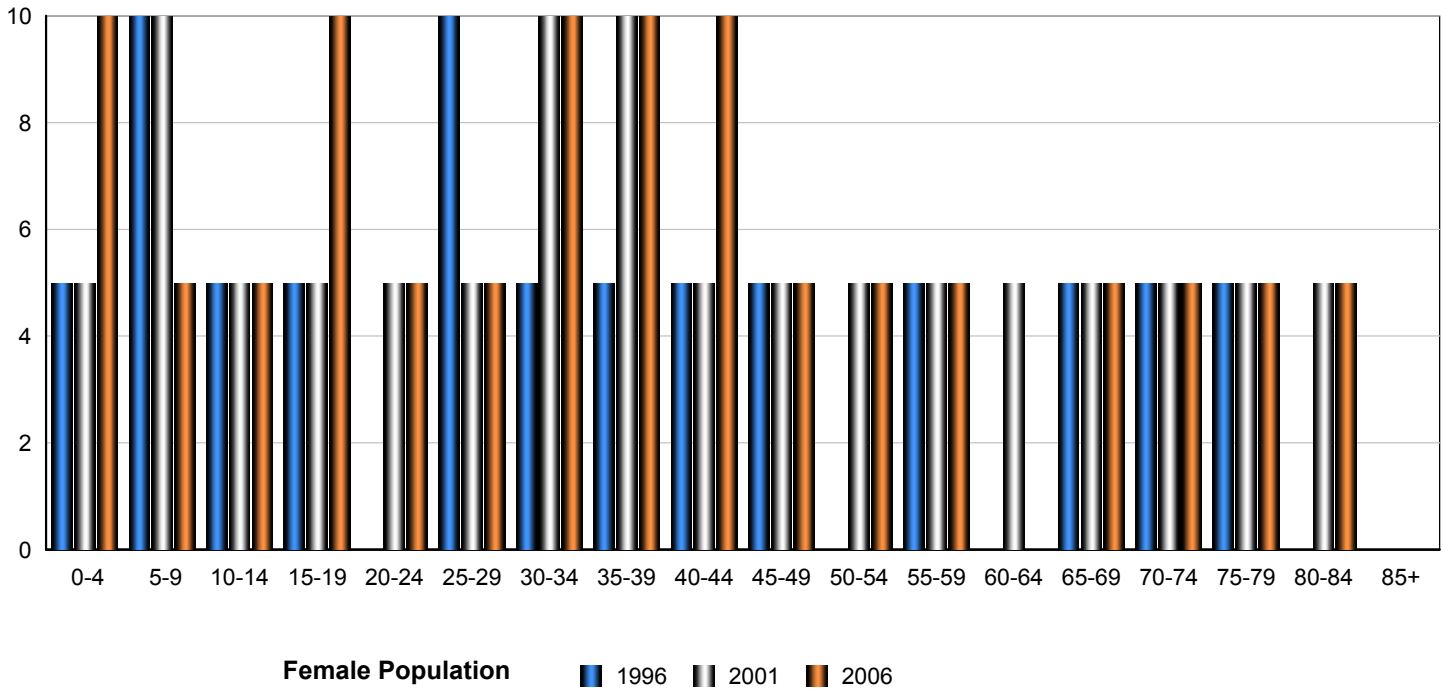


Census Year	Total Population	% Change
2006	195	2.00%
2001	200	8.10%
1996	185	8.90%

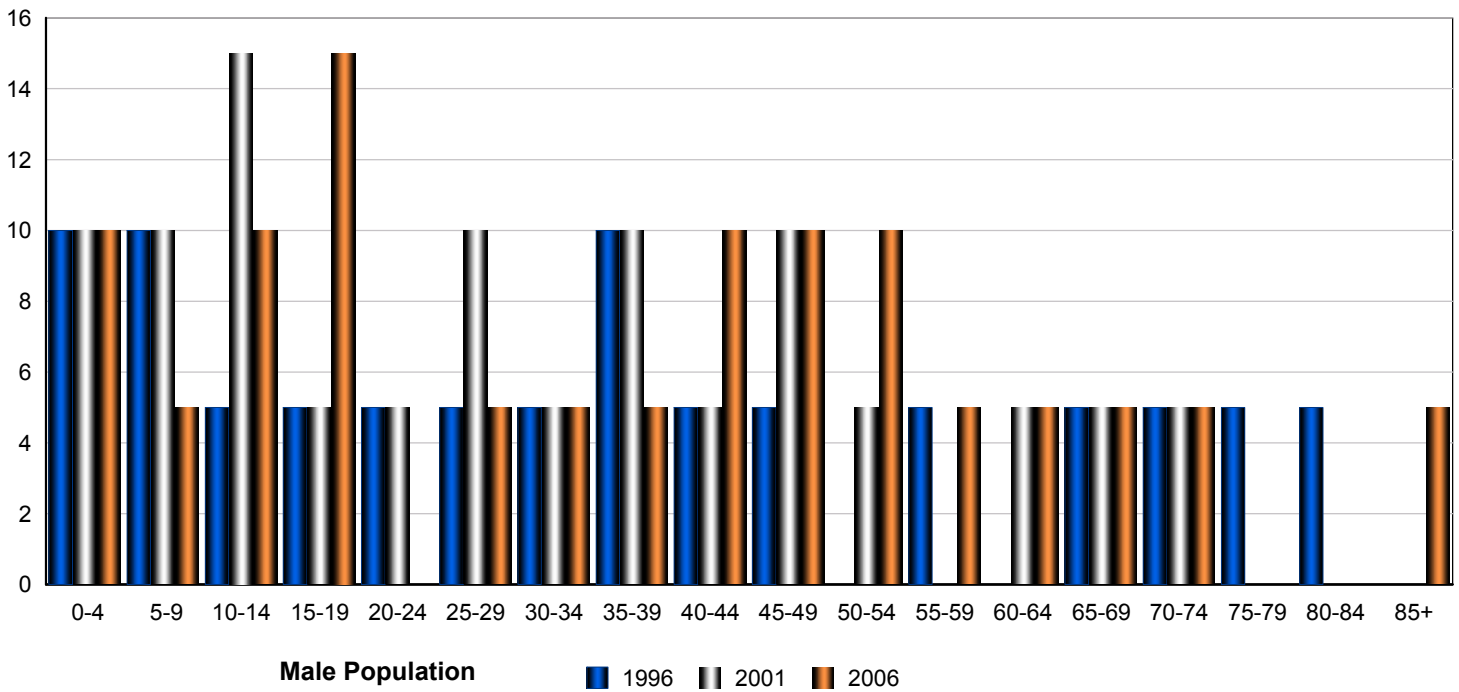
Source: Statistics Canada 2007.
Dewberry, Alberta. 2006 Community Profiles. 2006 Census.
Statistics Canada Catalogue no. 92-591-XWE. Ottawa. Released March 13, 2007.

Total Population by Gender and Age - Dewberry

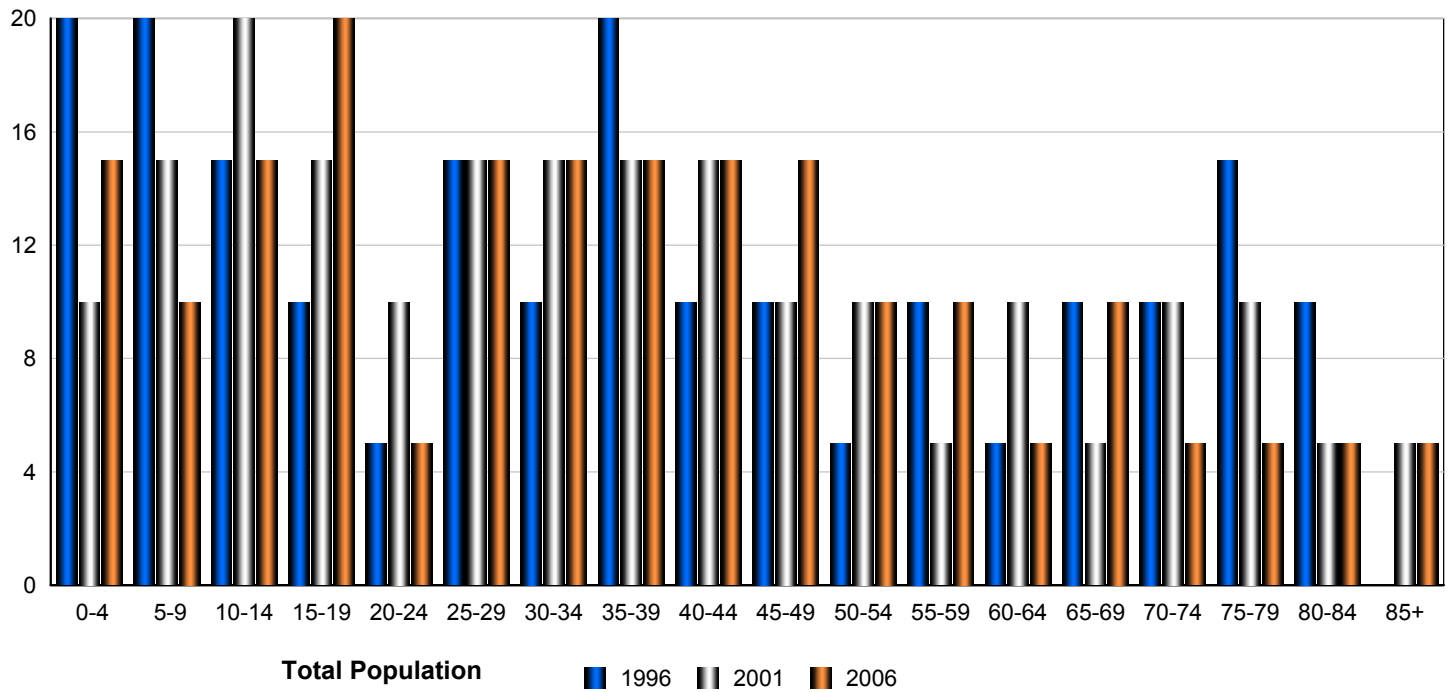
Census Population by Gender - Dewberry



Census Population by Gender - Dewberry



Census Population by Gender - Dewberry



	Male			Female			Total		
	2006	2001	1996	2006	2001	1996	2006	2001	1996
0-4	10	10	10	10	5	5	20	15	15
5-9	5	10	10	5	10	10	10	20	20
10-14	10	15	5	5	5	5	15	20	10
15-19	15	5	5	10	5	5	25	10	10
20-24	0	5	5	5	5	0	5	10	5
25-29	5	10	5	5	5	10	10	15	15
30-34	5	5	5	10	10	5	15	15	10
35-39	5	10	10	10	10	5	15	20	15
40-44	10	5	5	10	5	5	20	10	10
45-49	10	10	5	5	5	5	15	15	10
50-54	10	5	0	5	5	0	15	10	0
55-59	5	0	5	5	5	5	10	5	10
60-64	5	5	0	0	5	0	5	10	0
65-69	5	5	5	5	5	5	10	10	10
70-74	5	5	5	5	5	5	10	10	10
75-79	0	0	5	5	5	5	5	5	10
80-84	0	0	5	5	5	0	5	5	5
85-89	5	0	0	0	0	0	5	0	0
Total	110	105	90	105	100	75	215	205	165

Source: Statistics Canada 2007.
 Dewberry, Alberta. 2006 Community Profiles. 2006 Census.
 Statistics Canada Catalogue no. 92-591-XWE. Ottawa. Released March 13, 2007.

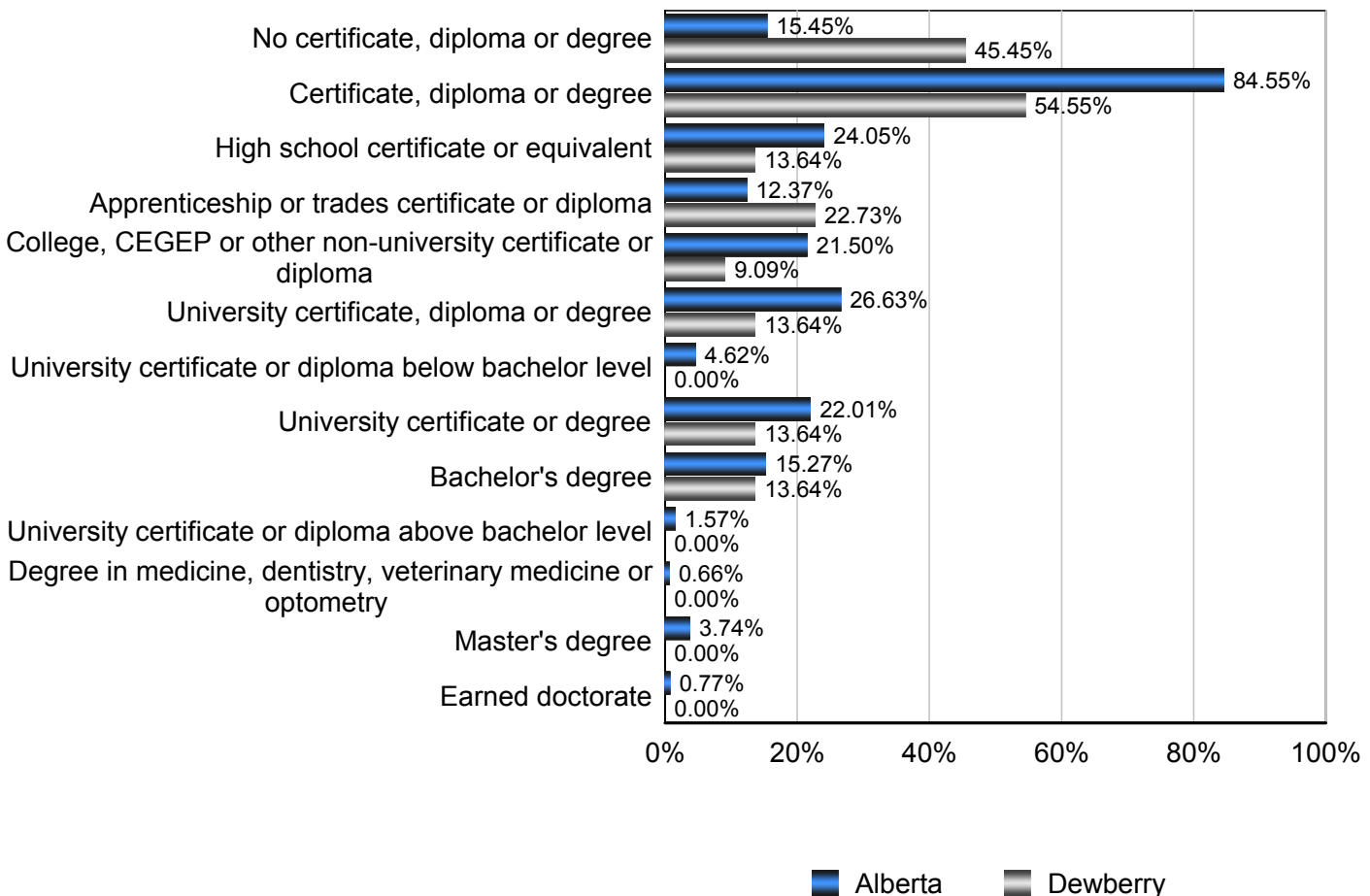
Education Statistics

Highest Level of Schooling, Population Aged 25-64 - Dewberry (2006)

% of Population Aged 25-64

Highest Level of Schooling	Dewberry	Alberta
No certificate, diploma or degree	45.45%	15.45%
Certificate, diploma or degree	54.55%	84.55%
High school certificate or equivalent	13.64%	24.05%
Apprenticeship or trades certificate or diploma	22.73%	12.37%
College, CEGEP or other non-university certificate or diploma	9.09%	21.50%
University certificate, diploma or degree	13.64%	26.63%
University certificate or diploma below bachelor level	0.00%	4.62%
University certificate or degree	13.64%	22.01%
Bachelor's degree	13.64%	15.27%
University certificate or diploma above bachelor level	0.00%	1.57%
Degree in medicine, dentistry, veterinary medicine or optometry	0.00%	0.66%
Master's degree	0.00%	3.74%
Earned doctorate	0.00%	0.77%

Amount by Which the Highest Level of Schooling - Dewberry vs Provincial Average (2006)

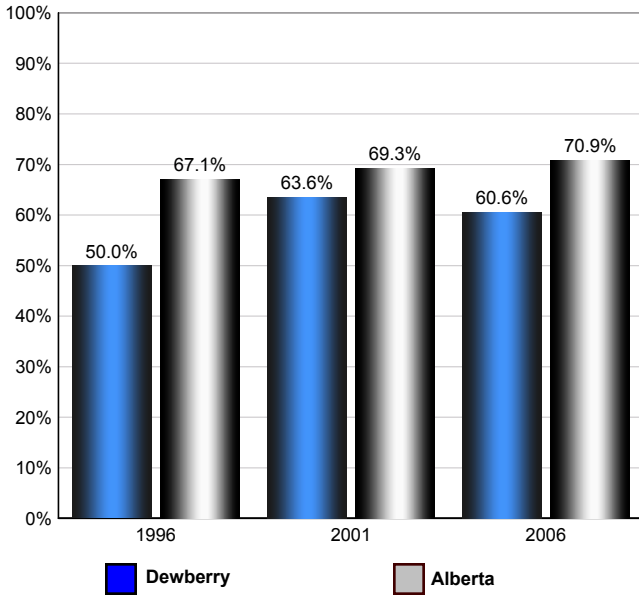


Source: Statistics Canada 2007.
 Alberta, Alberta. 2006 Community Profiles. 2006 Census.
 Statistics Canada Catalogue no. 92-591-XWE. Ottawa. Released March 13, 2007.

Labour Force

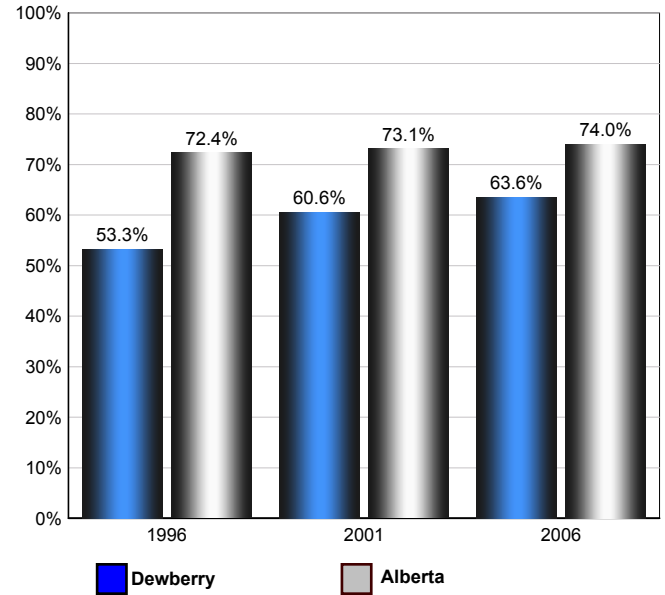
Annual Labour Force Activity Rates - Dewberry vs Alberta

Employment Rate



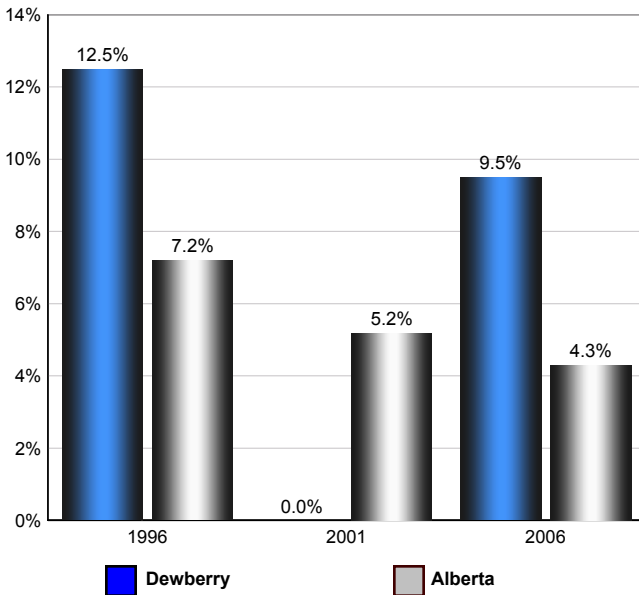
The Employment Rate is calculated by dividing the total employed by the total population 15 and over

Participation Rate



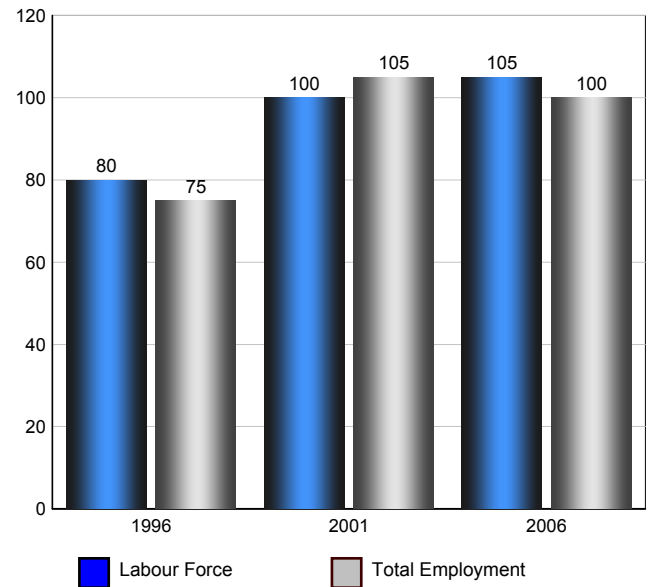
The Participation rate is calculated by summing together the number employed and unemployed and dividing the result by the total population aged 15 and over

Unemployment Rate



The Unemployment rate is calculated by dividing the total number of persons in the labour force that are reported as being unemployed by the total labour force.

Dewberry Labour Force and Total Employment (Age 15)



Source: Statistics Canada 2007. Dewberry, Alberta. 2006 Community Profiles. 2006 Census. Statistics Canada Catalogue no. 92-591-XWE. Ottawa. Released March 13, 2007.

Labour Force Age 15+ - Dewberry (2006)

Industry by Gender

Industry	Males	Females	Total
Agriculture, Forestry, Fishing and Hunting	0	0	0
Mining, Oil and Gas Extraction	10	0	10
Utilities	0	0	0
Construction	10	0	10
Manufacturing	0	0	0
Wholesale Trade	0	0	0
Retail Trade	0	0	0
Transportation and Warehousing	0	0	0
Information and Cultural Industries	0	0	0
Finance and Insurance	0	10	10
Real Estate, Rental and Leasing	0	0	0
Professional, Scientific and Technical Services	0	0	0
Management of Companies and Enterprises	0	0	0
Administrative and Support, Waste Management and Remediation Services	10	0	10
Educational services	0	0	0
Health care and social assistance	0	10	10
Arts, Entertainment and Recreation	0	0	0
Accommodation and Food Services	0	0	0
Other Services (except Public Administration)	0	0	0
Public Administration	35	0	35
Total	65	20	85

Source: Statistics Canada 2007.
Dewberry, Alberta. 2006 Community Profiles. 2006 Census.
Statistics Canada Catalogue no. 92-591-XWE. Ottawa. Released March 13, 2007.

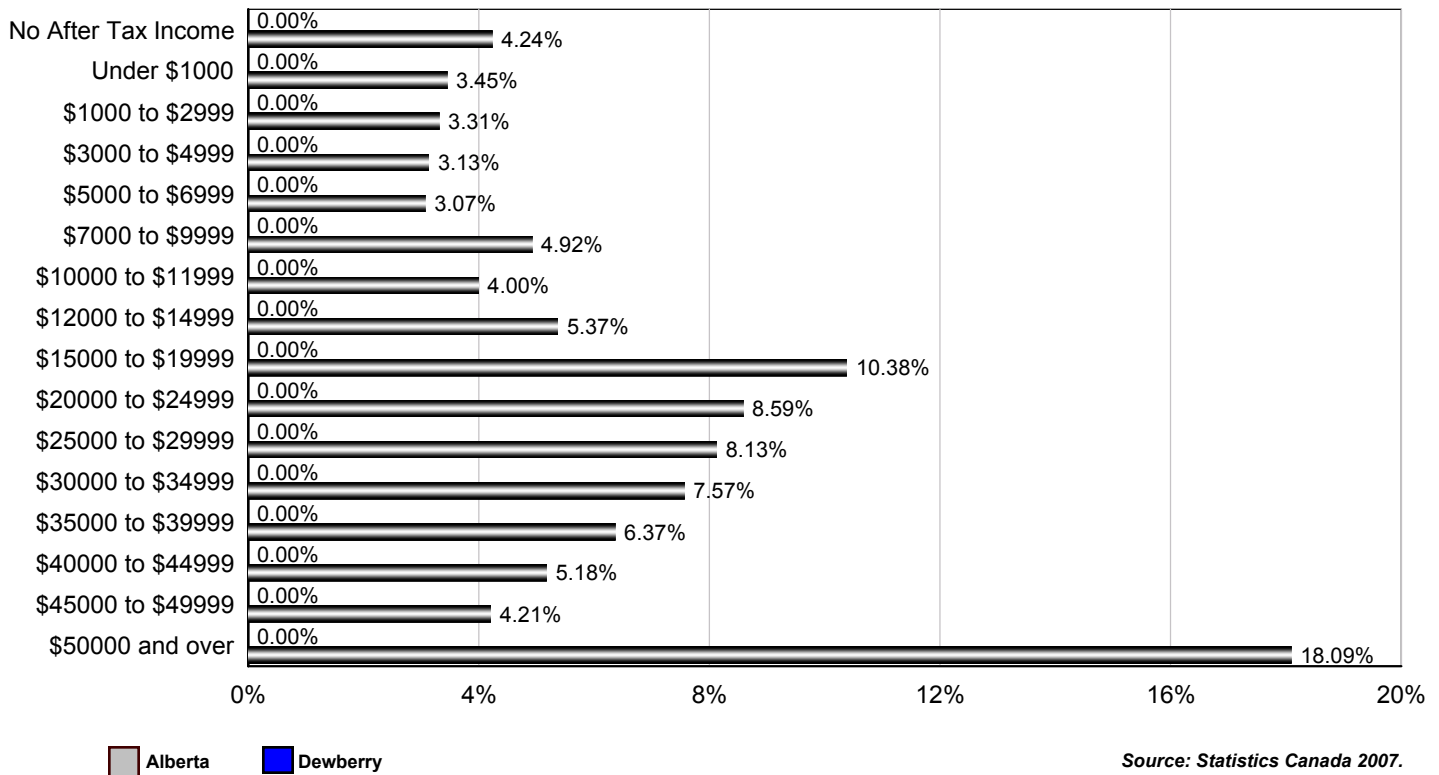
Occupation by Gender

Occupation	Males	Females	Total
Management Occupations	0	0	0
Business, Finance and Administration Occupations	0	10	10
Natural and Applied Sciences and Related Occupations	0	0	0
Health Occupations	0	0	0
Occupations in Social Science, Education, Government Service	0	10	10
Occupations in Art, Culture, Recreation and Sport	0	0	0
Sales and Service Occupations	10	10	20
Trades, Transport and Equipment Operators and Related Occupations	45	0	45
Occupations Unique to Primary	10	0	10
Occupations Unique to Processing, Manufacturing and Utilities	0	10	10
Total	65	40	105

Source: Statistics Canada 2007.
Dewberry, Alberta. 2006 Community Profiles. 2006 Census.
Statistics Canada Catalogue no. 92-591-XWE. Ottawa. Released March 13, 2007.

Income

Percent of Population 15+ by Income Bracket - Dewberry vs Alberta (2005)



Source: Statistics Canada 2007.
 Dewberry, Alberta. 2006 Community Profiles. 2006 Census.
 Statistics Canada Catalogue no. 92-591-XWE. Ottawa. Released March 13, 2007.

Population 15+ by Total After Tax Income - Dewberry (2005)

	Males	Females	Total
Without After-Tax Income	0	0	0
Under \$1,000	0	0	0
\$1,000 to \$2,999	0	0	0
\$3,000 to \$4,999	0	0	0
\$5,000 to \$6,999	0	0	0
\$7,000 to \$9,999	0	0	0
\$10,000 to \$11,999	0	0	0
\$12,000 to \$14,999	0	0	0
\$15,000 to \$19,999	0	0	0
\$20,000 to \$24,999	0	0	0
\$25,000 to \$29,999	0	0	0
\$30,000 to \$34,999	0	0	0
\$35,000 to \$39,999	0	0	0
\$40,000 to \$44,999	0	0	0
\$45,000 to \$49,999	0	0	0
\$50,000 and over	0	0	0
Total	0	0	0

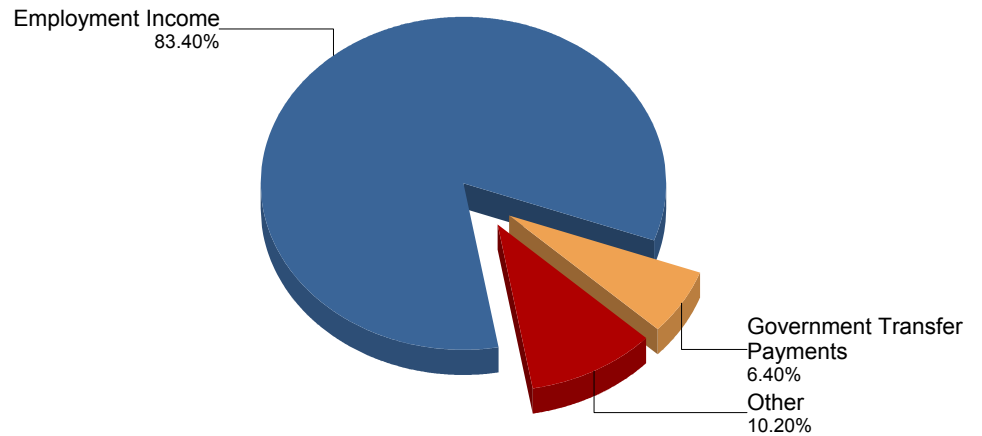
Due to rounding consolidating the shown income brackets may lead to errors. Such errors would be most pronounced for small communities.

Source: Statistics Canada 2007.
 Dewberry, Alberta. 2006 Community Profiles. 2006 Census.
 Statistics Canada Catalogue no. 92-591-XWE. Ottawa. Released March 13, 2007.

Composition of Family Income for Economic Families - Dewberry vs Alberta (2005)

Dewberry

Alberta



Economic family total income - The total income of an economic family is the sum of the total incomes of all members of that family.

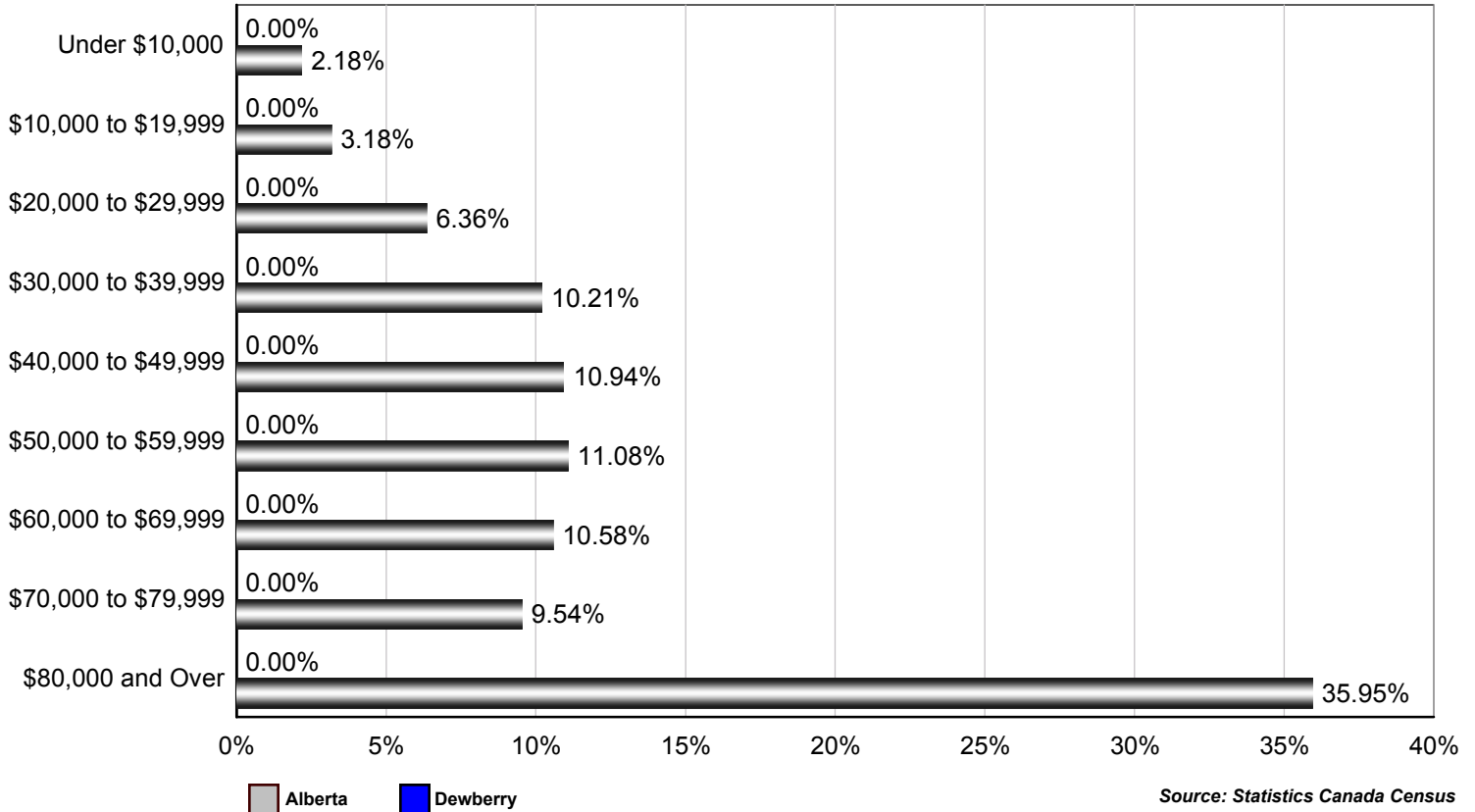
Source: Statistics Canada 2007.
Dewberry, Alberta. 2006 Community Profiles. 2006 Census.
Statistics Canada Catalogue no. 92-591-XWE. Ottawa. Released March 13, 2007.

Population 15+ With Employment Earnings - Dewberry (2005)

	Males	Females	Total
Earnings - As a % of total Earnings	0%	0%	0%
Median Employment Earnings	\$0	\$0	\$0
Average Employment Earnings	\$0	\$0	\$0

Source: Statistics Canada 2007.
Dewberry, Alberta. 2006 Community Profiles. 2006 Census.
Statistics Canada Catalogue no. 92-591-XWE. Ottawa. Released March 13, 2007.

Percent of Total Economic Families by After-tax Income Brackets - Dewberry vs Alberta (2005)



Number of Economic Families by After-tax Income Brackets - Dewberry (2005)

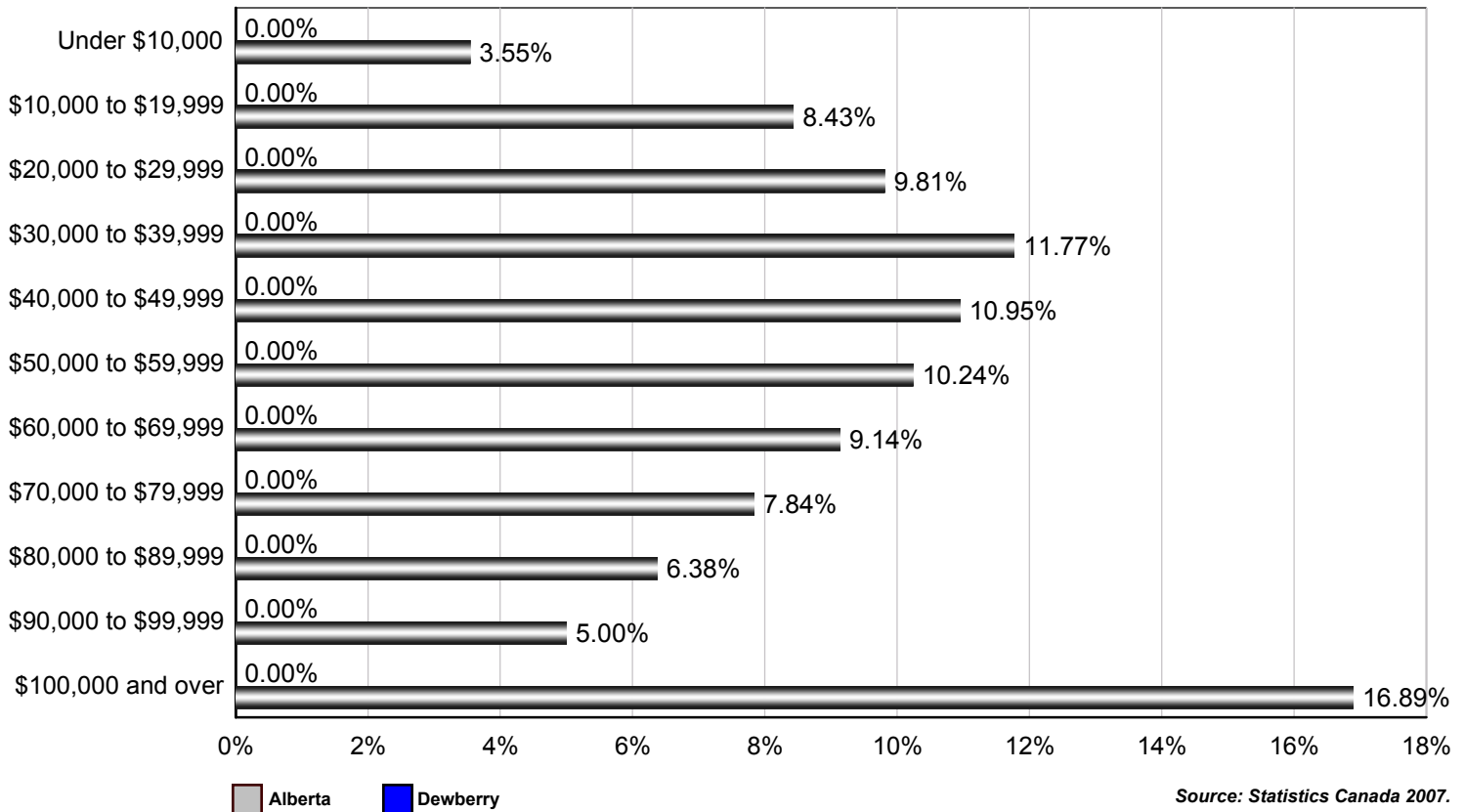
	Number of Families
Under \$10,000	0
\$10,000 to \$19,999	0
\$20,000 to \$29,999	0
\$30,000 to \$39,999	0
\$40,000 to \$49,999	0
\$50,000 to \$59,999	0
\$60,000 to \$69,999	0
\$70,000 to \$79,999	0
\$80,000 and over	0
Total	0

	Family Income
Median After-Tax Family Income	\$0
Average After-Tax Family Income	\$0

Due to rounding consolidating the shown income brackets may lead to errors. Such errors would be most pronounced for small communities.

Source: Statistics Canada 2007.
 Dewberry, Alberta. 2006 Community Profiles. 2006 Census.
 Statistics Canada Catalogue no. 92-591-XWE. Ottawa. Released March 13, 2007.

Percent of Total Private Households by After-tax Income Brackets - Dewberry vs Alberta (2005)



Source: Statistics Canada 2007.
 Dewberry, Alberta. 2006 Community Profiles. 2006 Census.
 Statistics Canada Catalogue no. 92-591-XWE. Ottawa. Released March 13, 2007.

Number of Private Households by After-tax Income Brackets - Dewberry (2005)

Income Bracket	Number of Families
Under \$10,000	0
\$10,000 to \$19,999	0
\$20,000 to \$29,999	0
\$30,000 to \$39,999	0
\$40,000 to \$49,999	0
\$50,000 to \$59,999	0
\$60,000 to \$69,999	0
\$70,000 to \$79,999	0
\$80,000 to \$89,999	0
\$90,000 to \$99,999	0
\$100,000 and Over	0
Total	0

Family Income	
Median After-Tax Family Income	\$0
Average After-Tax Family Income	\$0

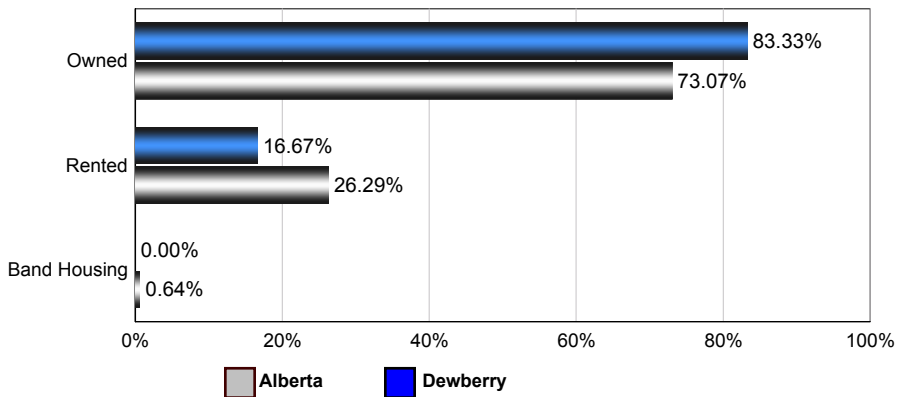
Due to rounding consolidating the shown income brackets may lead to errors. Such errors would be most pronounced for small communities.

Source: Statistics Canada Census

Dwellings

Number of Occupied Private Dwellings by Ownership - Dewberry

Dewberry vs Alberta (2006)



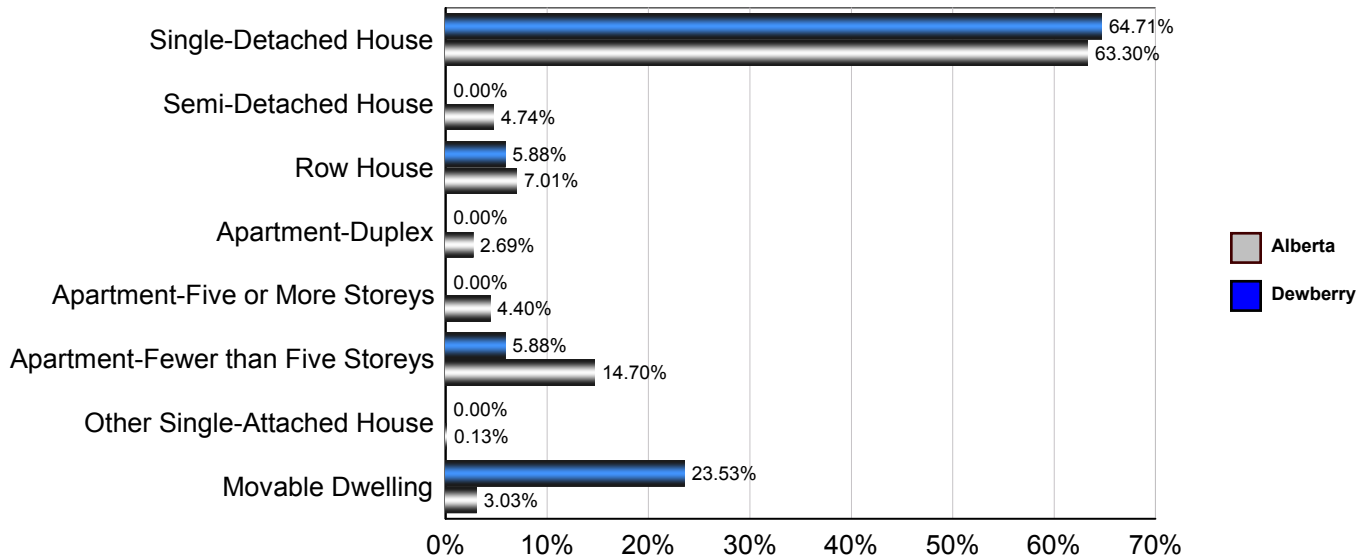
Dewberry

	1996	2001	2006
Owned	50	55	75
Rented	35	25	15
Band Housing	0	0	0
Total	85	80	90

Source: Statistics Canada 2007.
Dewberry, Alberta. 2006 Community Profiles. 2006 Census.
Statistics Canada Catalogue no. 92-591-XWE. Ottawa. Released March 13, 2007.

Number of Occupied Private Dwellings by Structural Type - Dewberry

Dewberry vs Alberta (2006)



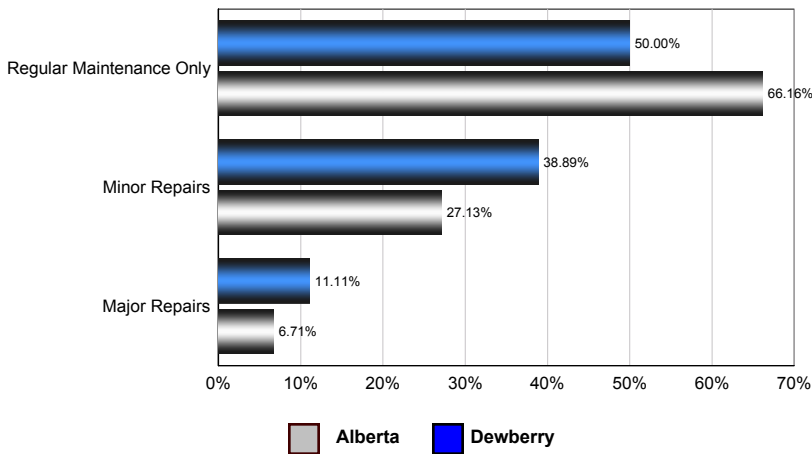
Dewberry

	1996	2001	2006
Single-Detached House	70	75	55
Semi-Detached House	0	0	0
Row House	0	0	0
Apartment - Duplex	0	0	0
Apartment - Five or More Storeys	0	0	0
Apartment - Fewer than Five Storeys	0	0	5
Other Single-Attached House	0	0	0
Movable Dwelling	10	5	20
Total	80	80	80

Source: Statistics Canada 2007.
Dewberry, Alberta. 2006 Community Profiles. 2006 Census.
Statistics Canada Catalogue no. 92-591-XWE. Ottawa. Released March 13, 2007.

Number of Occupied Private Dwellings by the Condition of Dwelling - Dewberry

Dewberry vs Alberta (2006)



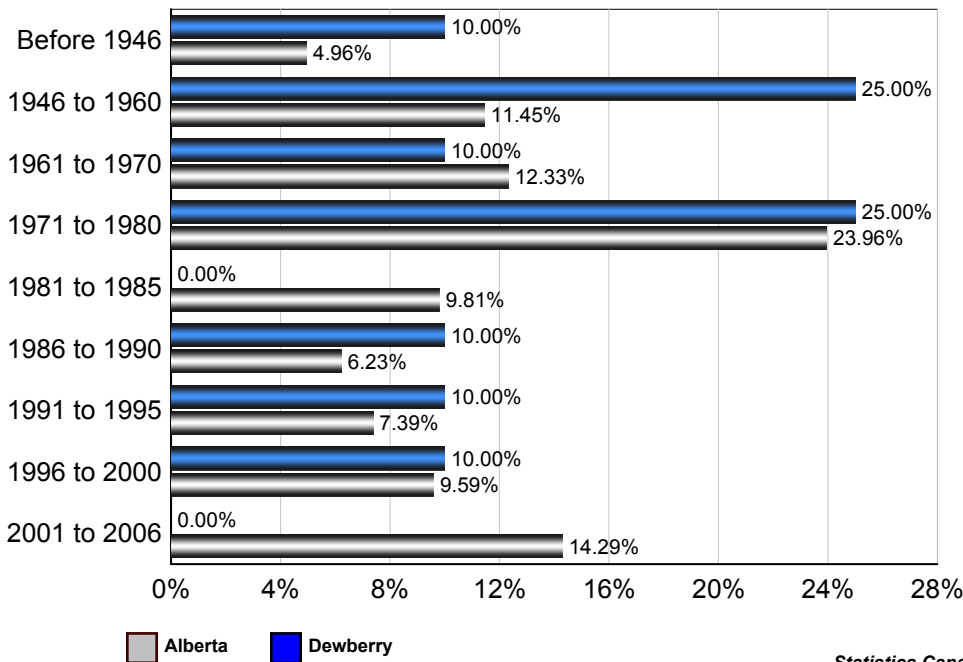
Dewberry

	1996	2001	2006
Regular Maintenance Only	55	55	45
Minor repairs	25	25	35
Major repairs	0	10	10
Total	80	90	90

Source: Statistics Canada 2007.
Dewberry, Alberta. 2006 Community Profiles. 2006 Census.
Statistics Canada Catalogue no. 92-591-XWE. Ottawa. Released March 13, 2007.

Number of Occupied Private Dwellings by Period of Construction - Dewberry

Dewberry vs Alberta (2006)



Dewberry

	2006
Before 1946	10
1946 to 1960	25
1961 to 1970	10
1971 to 1980	25
1981 to 1985	0
1986 to 1990	10
1991 to 1995	10
1996 to 2000	10
2001 to 2006	0
Total	100

Source: Statistics Canada 2007.
Dewberry, Alberta. 2006 Community Profiles. 2006 Census.
Statistics Canada Catalogue no. 92-591-XWE. Ottawa. Released March 13, 2007.

