

# Hines Creek

## Welcome

On behalf of Council and the residents of Hines Creek, I am pleased to provide you with the Village's Community Profile. We are proud of our community, its history and what it has to offer. We invite you to join us here in the Village of Hines Creek to enjoy a quality of life which stresses the importance of family and friends.

This profile provides you with information on the Village including its economic base, community services, recreation opportunities and other significant benefits.

We hope that you will find this information beneficial whether you are looking for a new location for a business or just looking for a new place to live. Come be a part of the Village of Hines Creek; be a part of The End of Steel!

M. Joan Smith  
Former Mayor of Hines Creek

## Area Overview

Settlement in the Hines Creek area began in the mid-1800's at a time when the fur trade was still active in Western Canada. The Peace River served the region as a transport medium for those involved in the fur trade. A Northwest Company fur-trading post was established on the banks of the Peace River at Dunvegan, making the area a focal point for the fur-trade and the development of agriculture. The Village, taking its name from the nearby water channel of Hines Creek, grew from its early beginnings as an area suited towards the pursuits of trappers, ranchers as the early settlers of Hines Creek.

Today, the Village of Hines Creek is a well-rounded and diverse community of population 437, situated in the heart of the most productive agricultural, forestry and oil and gas region of the Province. The Village maintains the agricultural tradition it was founded by being an agricultural service centre, but is also boasts many small businesses, is the END OF STEEL for the Canadian National Railway, is the setting for the Canadian Forest Products and Zavisha sawmills and has oil and gas production in close proximity. The Village is also located by some potential mineral resource sites. The many recreational, arts and cultural amenities are part of the Village's commitment to an excellent community quality of life.

## Location

The Village of Hines Creek is located in northwestern Alberta in the southern portion of the surrounding Municipal District of Clear Hills No. 21. The Village is situated at the junction of Highway 64 and Secondary Highway 685. It is west of Grimshaw and Mile Zero of the Mackenzie Highway 35 and just north of Fairview and Highway 2. This allows for easy access to Grande Prairie, Peace River, Fort St. John, British Columbia and the major routes to the Territories.

Hines Creek is located just over an hour's drive north of the City of Grande Prairie, approximately five and a half hours northwest of Edmonton and eight and a half hours north of Calgary.

## Economic Base

The area surrounding Hines Creek has good soils and favourable climate conditions for growing most crops resulting in the Village's role as a service centre for the agricultural industry. Livestock production in the area is and will continue to be an important part of the agricultural industry due to fluctuating grain prices and the availability of large grazing areas.

Forestry is an important industry for the area surrounding Hines Creek as both the Zavisha and Canadian Forest Products sawmills along with other forestry opportunities in northern Alberta employ many Hines Creek residents on a full time or seasonal basis. Oil and gas producing wells, two petroleum pipelines, a natural gas pipeline, a gas plant and related structures can be found in close proximity to Hines Creek.

## Economic Facts

The agricultural industry includes two grain elevators, fertilizer plant, chemical dealer and a number of other farm supply and service businesses. There is potential for further farm development in the area.

Lignite coal and iron ore deposits near Hines Creek also hold future development and economic potential for the Village and there is further potential development of natural gas in the area.

### Major Businesses Products/Services

- United Grain Growers Grain Elevator
- Cargill Fertilizer Blending Plant
- Canadian Forest Products Limited Forestry
- Zavisha Sawmill Forestry

## Financial Institutions

- Alberta Treasury Branch

## Utilities

### Electrical Power

Atco Electric, Ltd.  
Box 2429  
Edmonton, Alberta  
T5J 4M7  
Tel: 1-800-668-2248

### Natural Gas

Atco Gas, Ltd.  
10035-105 St.  
Edmonton, Alberta  
T5J 2V6  
Tel: 1-888-511-7550

### Telephone

Telus Communications  
Box 2422  
Edmonton, Alberta  
T5J 2S7  
Tel: 780-310-2255

### Water Supply

The residential water, sewerage and garbage flat rate is \$75.00 billed bimonthly.

The Village is served with an up-to-date water and sewer system providing excellent quality and quantity. Water obtained from Jack Creek is treated in a municipal reservoir. The water is subject to filtration, chlorination, coagulation and is distributed by a piped system. The reservoir capacity, measured in treated substance is 682 cubic metres, and the design capacity is 490 cubic metres.

### Waste Management

Sewage treatment is provided by a series of lagoons.

## Taxation

	<u>Residential/Farmland</u>	<u>Non-Residential</u>
<u>2005</u>		
Municipal Tax Rate	16.9870	25.9870
Education - Alberta School Foundation Fund Tax Rate	5.1700	7.5900
Allowance for Non-Collection of Requisitioned Taxes	.2730	.2730
Seniors Lodge Accommodation Tax Rate	.2580	.2580

## Transportation

### Air Services

To accommodate air service, a grass landing strip is located just 3 km west of Hines Creek and a helicopter landing pad is located within the Village. The nearest all-weather airport facility is located just west of Fairview [20 kmsoutheast of Hines Creek] which accommodates local and charter flights. The airport includes a 912 m paved runway with plans for adding a grass landing strip perpendicular to the existing runway.

Regularly scheduled passenger air and freight service is provided via the Peace River Airport [88 kmeast of Hines Creek] and Grande Prairie Airport [130 kmsouth of Hines Creek].

### Rail Services

Freight service in the region is provided by the Canadian National Railway, secondary main line. From its terminus in Hines Creek, the railway extends southeast to Fairview and east to Peace River where it connects with lines running north to High Level or south to Edmonton. Within the Village, spur trackage is available.

### Highways

Hines Creek is located at the intersection of Primary Highway 64 and Secondary Highway 685. To the south of the Village, Highway 64 joins with Highway 2 which runs east to the Town of Peace River and south to the City of Grande Prairie. To the north of Hines Creek, Highway 64, which is

an alternate route to the Alaska Highway, runs west through Municipal District of Clear Hills No. 21 to the British Columbia/Alberta border. Highway 2A also connects Hines Creek to the Town of Fairview. These roads are paved and are in excellent condition.

Secondary Highway 685 runs east to the Town of Grimshaw and west to the Peace River valley. The road to Grimshaw has been recently paved.

#### **Trucking Firms**

Hines Creek has excellent trucking services. Trucking services are provided through at least five local companies offering freight service. There are also warehouse and other storage facilities in the surrounding area.

#### **Bus Services**

Greyhound freight services are available in the Village while passenger service can be obtained in nearby Fairview.

#### **Couriers and Taxis**

Hines Creek has excellent courier services. There are a number of courier companies that help serve Hines Creek on a daily basis.

## **Community Lifestyle**

#### **Recreation**

There are many recreational facilities in Hines Creek including an indoor arena, curling rink, gymnasium, auditorium, 2 tennis courts, baseball diamonds, playing fields, playgrounds, community parks and a golf course. Just 5 minutes south of the Village, George Lake provides boating and camping facilities as well as many other outdoor recreational activities.

#### **Community Organizations**

The Hines Creek area offers a number of service clubs and organizations which include a Recreation Board, Curling Club, Senior Citizen's Club, Figure Skating Club, Agricultural Society, Minor Hockey, Golf and Country Club, Museum Society and Business Association. Also available is the Royal Canadian Legion. The Svittonak Dancers are a local performing group.

#### **Religious Services**

Services are held at five community religious centers - two catholic, and one each of lutheran and united, as well as one gospel mission.

#### **Special Annual Events/Attractions**

The End of Steel Museum, located along Highway 64 has been developed around the themes of homesteader life and the coming of the railroad. The museum features pioneer homes, church, store, community hall, rail cabooses, antique cars and historical artifacts.

Special annual events include Fairview College Numb-Bum Motor Cycle Marathon, Hines Creek Spring Craft Sale, Ukrainian Dancers Spring Concert, Carter Camp Log Race, Heritage Days, Fall Fair, George Lake Music Festival and the Christmas Craft Sale.

#### **Hospitality**

##### **Accommodation**

Hines Creek Hotel

##### **Restaurants**

Last Spike Cafe

## **Education**

Hines Creek is part of the Peace River School Division #10, headquartered in Peace River [Tel: 780-624-3601].

#### **Daycare/Nursery**

NA

#### **Public**

Schools in Hines Creek include Grace Shepherd Elementary School [K-6] and Hines Creek High School [7-12].

#### **Separate**

NA

#### **Private**

NA

## **Post Secondary**

Fairview is the home of a dynamic post-secondary educational institution, Fairview College. Post-secondary courses by correspondence can also be obtained through Athabasca University and the University of Alberta. Grande Prairie Regional College offers students university transfer and degree programs.

## Health Care

The nearest hospital is located in Fairview, approximately 20 minutes away. The Town of Fairview has a hospital with 125 beds, 3 medical clinics and a health unit. There is a 31 bed seniors' home, the Homesteader Lodge, in the Village as well there is a visiting doctor and public health nurse from the Peace River Health Unit.

## Emergency Services

### Fire Protection

The Village operates a volunteer fire department from the municipal complex [Tel: 780-494-3811]. The fire department includes approximately 15 volunteers, 2 fire fighting vehicles and 1 emergency response vehicle.

### Police Services

Police protection and service is provided by Fairview detachment of the Royal Canadian Mounted Police [RCMP] [Tel: 780-835-2211]. The detachment encompasses the Hines Creek/Fairview region and has 11 personnel.

### Ambulance Services

Ground and air ambulance service is provided through the Fairview General Hospital [Tel: 780-835-5911].

## Community Services

### Municipal

Village of Hines Creek  
P.O. Box 421  
Hines Creek, Alberta  
T0H 2A0  
Tel: 780-494-3690  
Fax: 780-494-3605

Municipal Library

### Provincial

NA

### Federal

Canada Post Office

## Key Contacts

### Municipal (Updated August 1999)

Village of Hines Creek  
P.O. Box 421  
Hines Creek, Alberta  
T0H 2A0  
Tel: 780-494-3690  
Fax: 780-494-3605  
[hinescrk@telusplanet.net](mailto:hinescrk@telusplanet.net)

D. Robert Seidler  
Mayor

Marena McKinnon  
Municipal Manager

### Provincial (Updated June 2001)

Andree Carley, Regional Development Officer  
Alberta Economic Development  
Postal Bag 900 - 3  
105 Provincial Building  
9626 - 96 Avenue  
Peace River, Alberta  
T8S 1T4  
Tel: 780-624-6113  
Fax: 780-624-6490  
[andree.carley@gov.ab.ca](mailto:andree.carley@gov.ab.ca)

Bob Hall, Regional Manager  
Alberta Economic Development  
#1401 Provincial Building  
10320-99 St  
Grande Prairie, Alberta  
T8V 6J4  
Tel: 780-538-5230  
Fax: 780-538-5332  
Email: bob.hall@gov.ab.ca

Hector Goudreau  
Member of the Legislative Assembly [MLA]  
Dunvegan-Central Peace Constituency  
Room 513, Legislature Building  
10800 - 97 Avenue  
Edmonton, Alberta  
T5K 2B6  
Tel: 780-415-9421  
Fax: 780-427-1835

Constituency Office:  
PO. Box 1054  
031- 1st Avenue SW  
Falher AB  
T0H 1M0  
Tel: 780-837-3846  
Toll Free: 1-866-835-4988  
Fax: 780-837-3849

**Federal (Updated May 2006)**

Chris Warkentin  
Member of Parliament [MP]  
Peace River Constituency  
House of Commons  
Ottawa, Ontario  
K1A 0A6

Constituency Office:  
#207, 10605 West Side Drive  
Grande Prairie, Alberta T8V 8E6

E-mail: [warkentin.c@parl.gc.ca](mailto:warkentin.c@parl.gc.ca)  
Website: [www.chriswarkentin.ca](http://www.chriswarkentin.ca)

Toll Free: 1-800-667-0456  
(780) 538-1677  
fax (780) 538-9257

Regional:

Mackenzie Municipal Services Agency  
Box 450  
Berwyn, Alberta T0H 0E0  
Tel: 780-338-3862  
Fax: 780-338-3811  
Email: [nmsa@cclinet.ab.ca](mailto:nmsa@cclinet.ab.ca)

**Google Map**



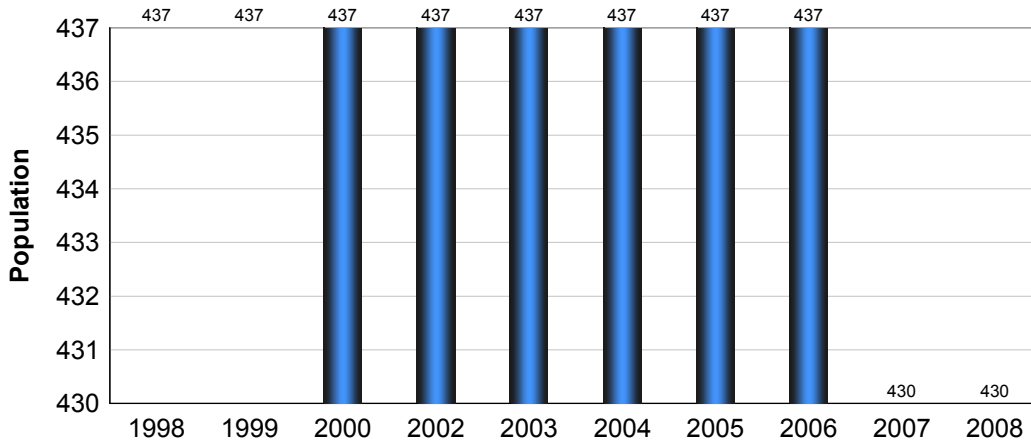
Disclaimer: Information in this profile has been provided from a variety of external sources. AlbertaFirst.com Ltd. provides this template, and each community posts their own content within the template. If you find inaccuracies or information you feel needs changing, please contact the community directly. Although every effort has been made to ensure the accuracy, currency and reliability of the content and data, AlbertaFirst.com Ltd. accepts no responsibility in this regard.

©AlbertaFirst.com Ltd., 2010.

A chart or table in this Profile may be blank. This will occur if there was no data available for that community for the specified time period

## Municipal Population

### Total Population - Hines Creek

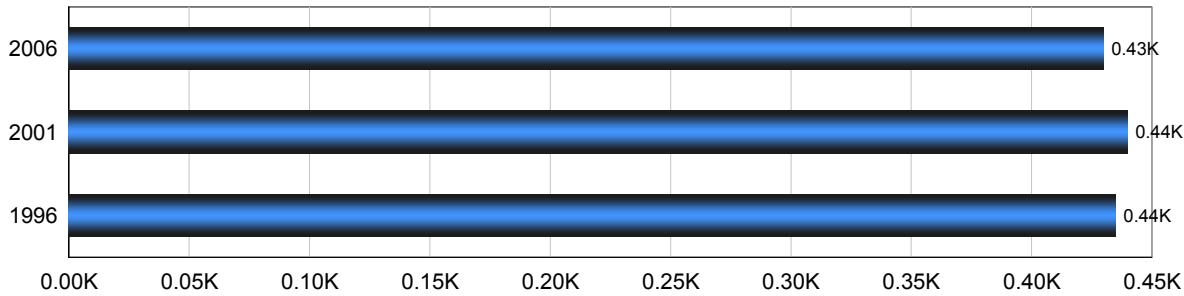


Year	Community Growth	Alberta Growth
2008	0.00%	2.37%
2007	(1.60)%	3.39%
2006	0.00%	1.95%
2005	0.00%	3.91%
2004	0.00%	0.95%
2003	0.00%	1.34%
2001	0.00%	4.02%
2000	0.00%	2.15%
1999	0.00%	3.24%
1998	0.00%	1.33%

Source: Statistics Canada 2007.  
Hines Creek, Alberta. 2006 Community Profiles. 2006 Census.  
Statistics Canada Catalogue no. 92-591-XWE. Ottawa. Released March 13, 2007.

## Population

### Total Population - Hines Creek



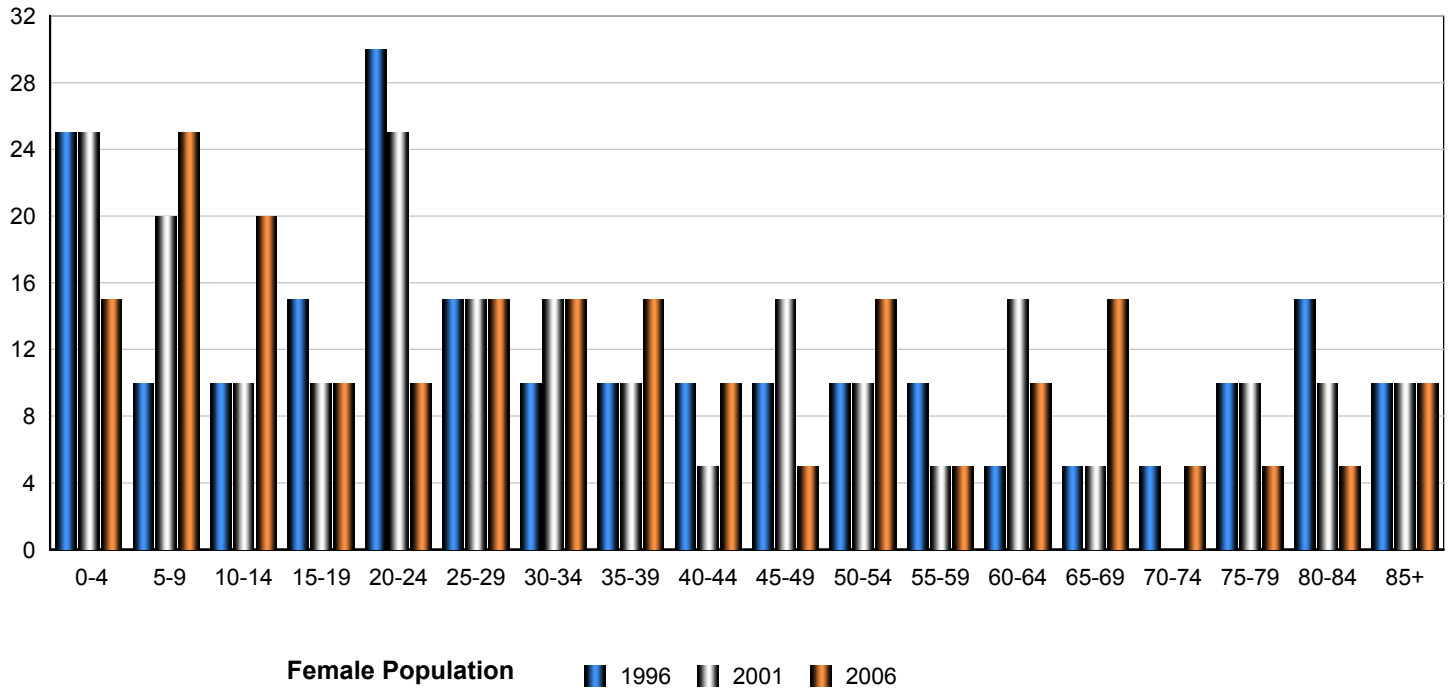
Census Year	Total Population	% Change
2006	430	1.60%
2001	440	- %
1996	435	3.30%

Source: Statistics Canada 2007.  
Hines Creek, Alberta. 2006 Community Profiles. 2006 Census.  
Statistics Canada Catalogue no. 92-591-XWE. Ottawa. Released March 13, 2007.

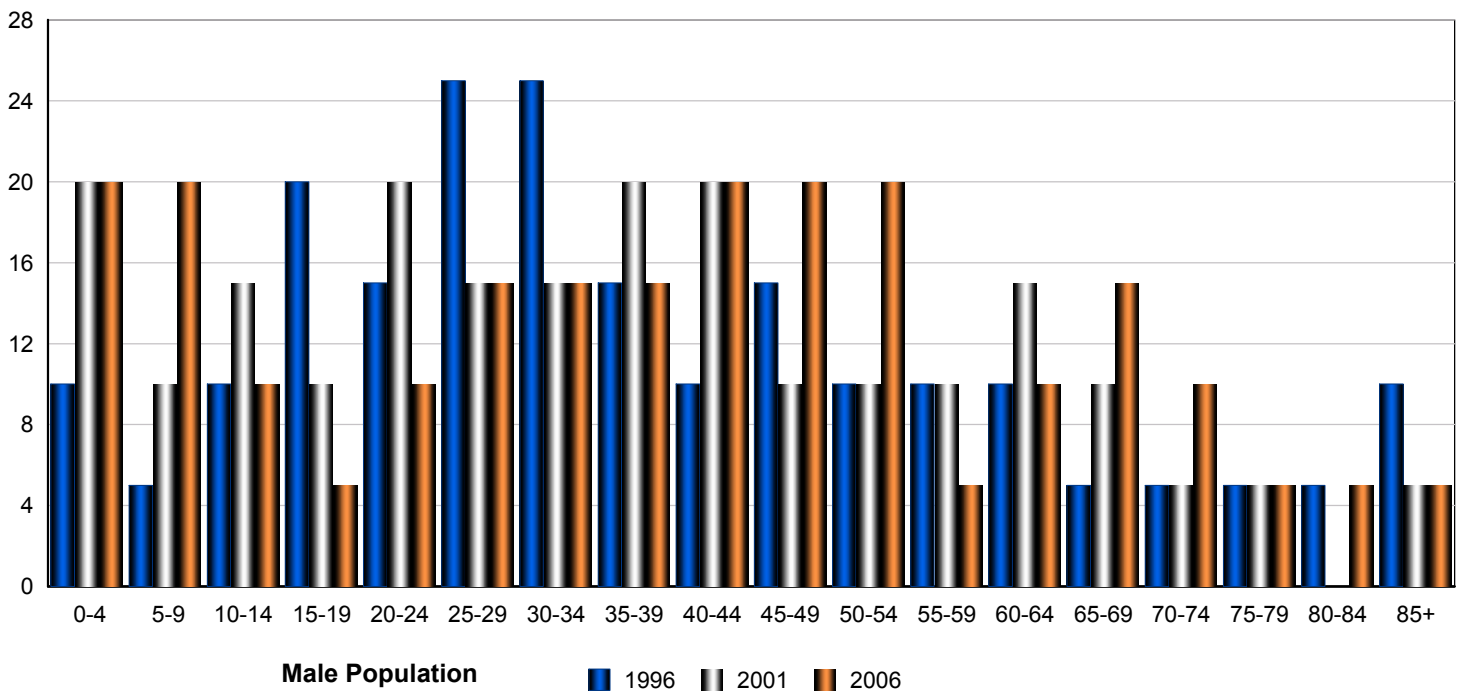
# Hines Creek

## Total Population by Gender and Age - Hines Creek

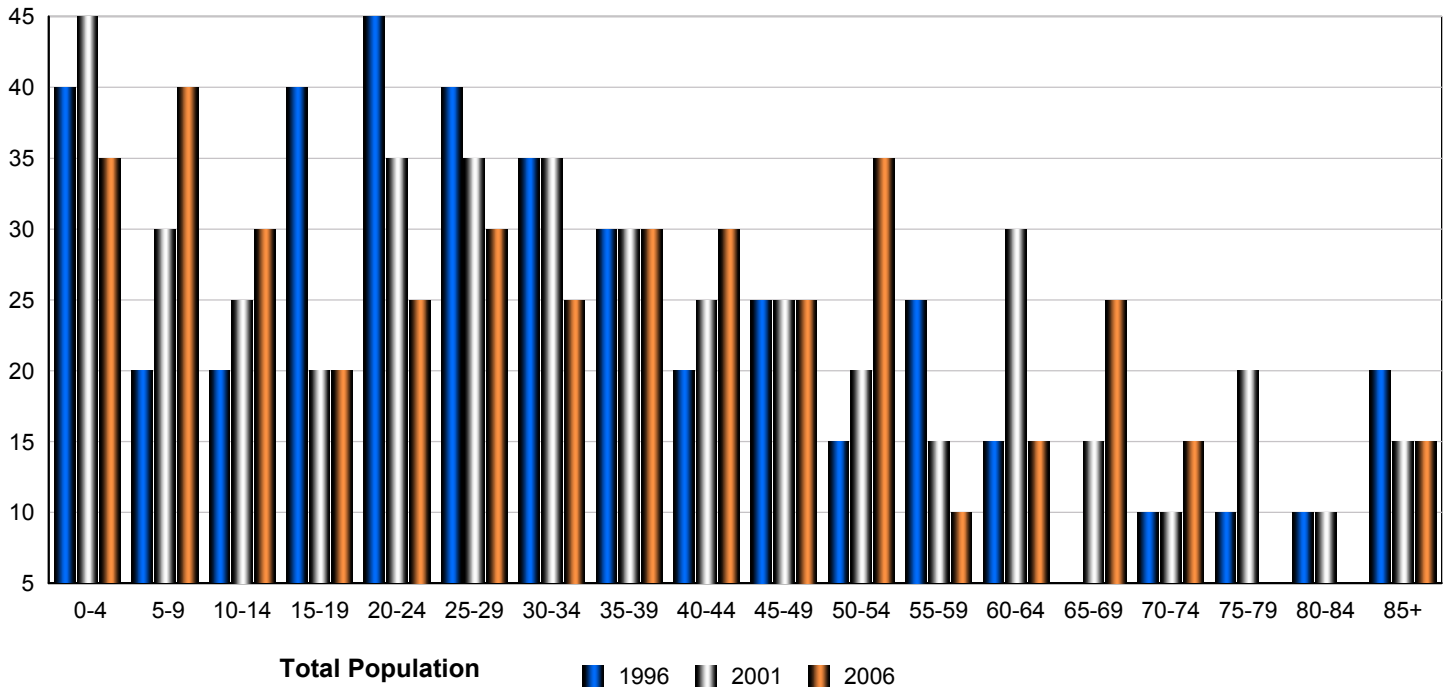
### Census Population by Gender - Hines Creek



### Census Population by Gender - Hines Creek



## Census Population by Gender - Hines Creek



	Male			Female			Total		
	2006	2001	1996	2006	2001	1996	2006	2001	1996
0-4	20	20	10	15	25	25	35	45	35
5-9	20	10	5	25	20	10	45	30	15
10-14	10	15	10	20	10	10	30	25	20
15-19	5	10	20	10	10	15	15	20	35
20-24	10	20	15	10	25	30	20	45	45
25-29	15	15	25	15	15	15	30	30	40
30-34	15	15	25	15	15	10	30	30	35
35-39	15	20	15	15	10	10	30	30	25
40-44	20	20	10	10	5	10	30	25	20
45-49	20	10	15	5	15	10	25	25	25
50-54	20	10	10	15	10	10	35	20	20
55-59	5	10	10	5	5	10	10	15	20
60-64	10	15	10	10	15	5	20	30	15
65-69	15	10	5	15	5	5	30	15	10
70-74	10	5	5	5	0	5	15	5	10
75-79	5	5	5	5	10	10	10	15	15
80-84	5	0	5	5	10	15	10	10	20
85-89	5	5	10	10	10	10	15	15	20
<b>Total</b>	<b>225</b>	<b>215</b>	<b>210</b>	<b>210</b>	<b>215</b>	<b>215</b>	<b>435</b>	<b>430</b>	<b>425</b>

Source: Statistics Canada 2007.  
 Hines Creek, Alberta. 2006 Community Profiles. 2006 Census.  
 Statistics Canada Catalogue no. 92-591-XWE. Ottawa. Released March 13, 2007.

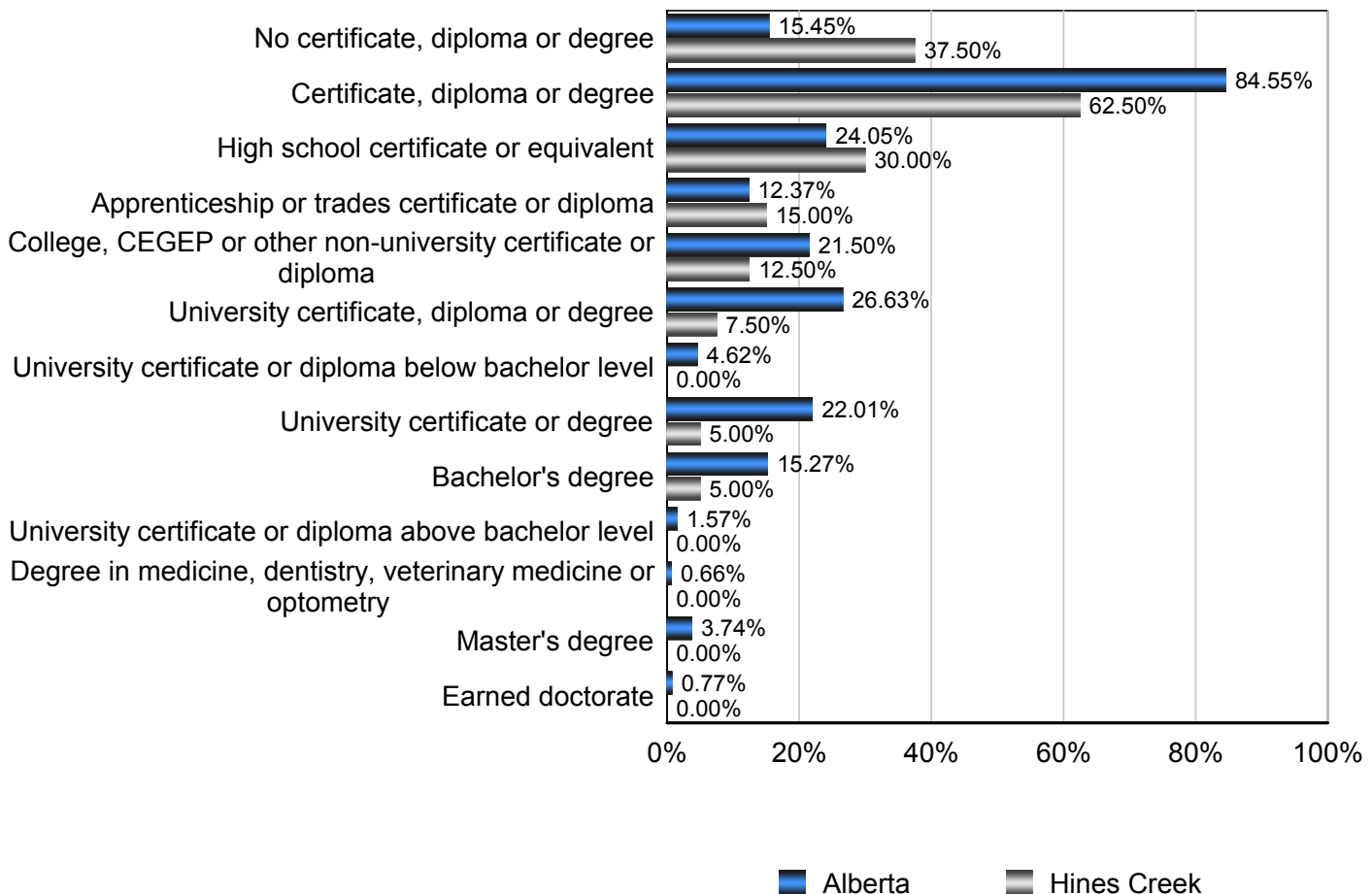
## Education Statistics

### Highest Level of Schooling, Population Aged 25-64 - Hines Creek (2006)

% of Population Aged 25-64

Highest Level of Schooling	Hines Creek	Alberta
No certificate, diploma or degree	37.50%	15.45%
Certificate, diploma or degree	62.50%	84.55%
High school certificate or equivalent	30.00%	24.05%
Apprenticeship or trades certificate or diploma	15.00%	12.37%
College, CEGEP or other non-university certificate or diploma	12.50%	21.50%
University certificate, diploma or degree	7.50%	26.63%
University certificate or diploma below bachelor level	0.00%	4.62%
University certificate or degree	5.00%	22.01%
Bachelor's degree	5.00%	15.27%
University certificate or diploma above bachelor level	0.00%	1.57%
Degree in medicine, dentistry, veterinary medicine or optometry	0.00%	0.66%
Master's degree	0.00%	3.74%
Earned doctorate	0.00%	0.77%

### Amount by Which the Highest Level of Schooling - Hines Creek vs Provincial Average (2006)

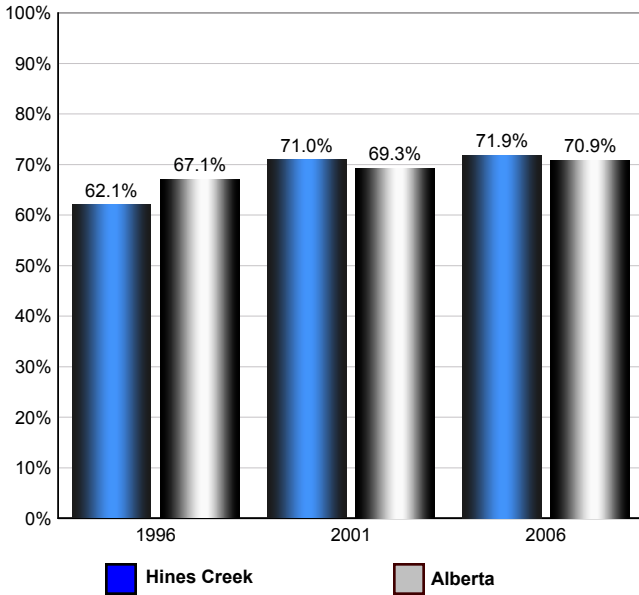


Source: Statistics Canada 2007.  
 Alberta, Alberta. 2006 Community Profiles. 2006 Census.  
 Statistics Canada Catalogue no. 92-591-XWE. Ottawa. Released March 13, 2007.

## Labour Force

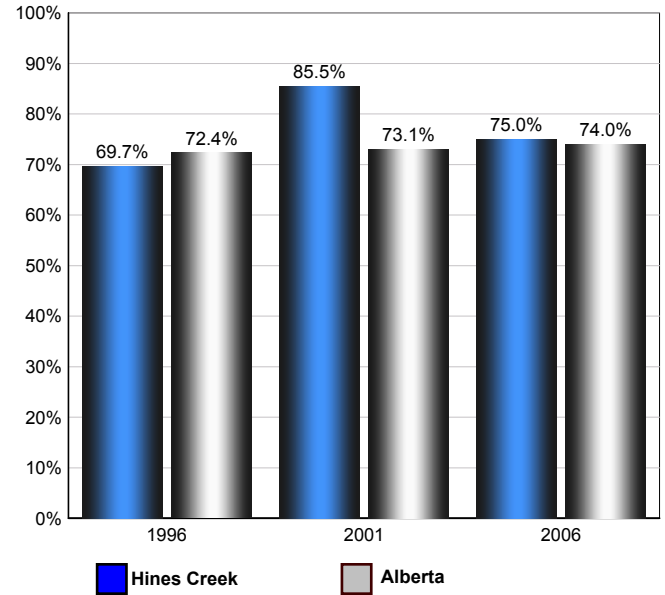
### Annual Labour Force Activity Rates - Hines Creek vs Alberta

#### Employment Rate



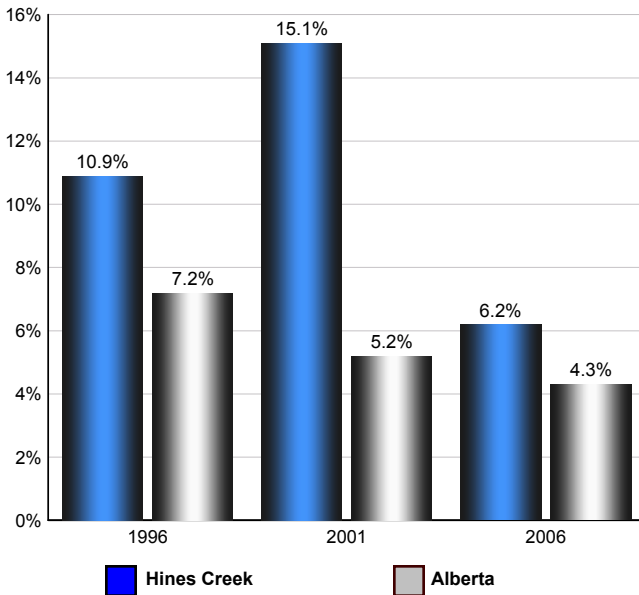
The Employment Rate is calculated by dividing the total employed by the total population 15 and over

#### Participation Rate



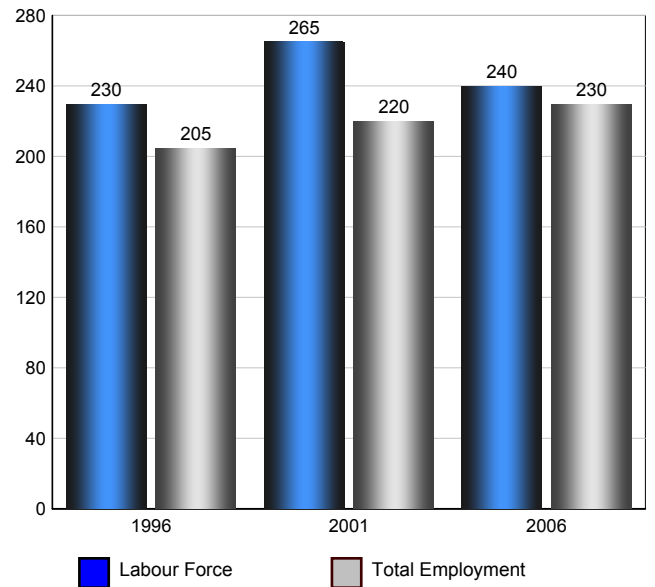
The Participation rate is calculated by summing together the number employed and unemployed and dividing the result by the total population aged 15 and over

#### Unemployment Rate



The Unemployment rate is calculated by dividing the total number of persons in the labour force that are reported as being unemployed by the total labour force.

#### Hines Creek Labour Force and Total Employment (Age



Source: Statistics Canada 2007. Hines Creek, Alberta. 2006 Community Profiles. 2006 Census. Statistics Canada Catalogue no. 92-591-XWE. Ottawa. Released March 13, 2007.

## Labour Force Age 15+ - Hines Creek (2006)

### Industry by Gender

Industry	Males	Females	Total
Agriculture, Forestry, Fishing and Hunting	0	0	0
Mining, Oil and Gas Extraction	60	0	60
Utilities	0	0	0
Construction	20	0	20
Manufacturing	20	0	20
Wholesale Trade	0	0	0
Retail Trade	15	30	45
Transportation and Warehousing	0	0	0
Information and Cultural Industries	0	0	0
Finance and Insurance	0	10	10
Real Estate, Rental and Leasing	0	0	0
Professional, Scientific and Technical Services	0	0	0
Management of Companies and Enterprises	0	0	0
Administrative and Support, Waste Management and Remediation Services	0	0	0
Educational services	0	10	10
Health care and social assistance	0	10	10
Arts, Entertainment and Recreation	0	0	0
Accommodation and Food Services	0	0	0
Other Services (except Public Administration)	20	25	45
Public Administration	0	10	10
<b>Total</b>	<b>135</b>	<b>95</b>	<b>230</b>

Source: Statistics Canada 2007.  
Hines Creek, Alberta. 2006 Community Profiles. 2006 Census.  
Statistics Canada Catalogue no. 92-591-XWE. Ottawa. Released March 13, 2007.

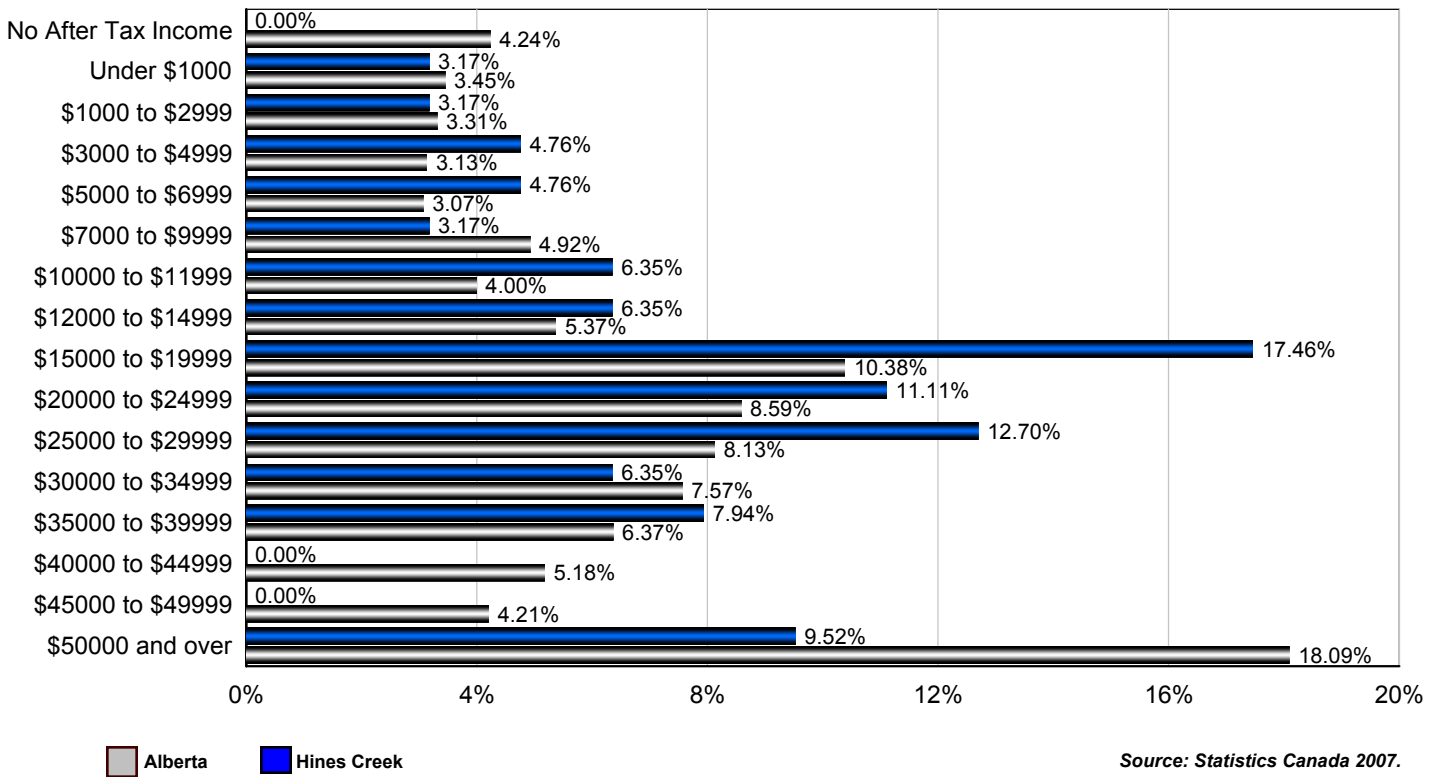
### Occupation by Gender

Occupation	Males	Females	Total
Management Occupations	20	20	40
Business, Finance and Administration Occupations	10	15	25
Natural and Applied Sciences and Related Occupations	0	0	0
Health Occupations	0	0	0
Occupations in Social Science, Education, Government Service	10	10	20
Occupations in Art, Culture, Recreation and Sport	0	0	0
Sales and Service Occupations	20	35	55
Trades, Transport and Equipment Operators and Related Occupations	40	0	40
Occupations Unique to Primary	40	10	50
Occupations Unique to Processing, Manufacturing and Utilities	15	0	15
<b>Total</b>	<b>155</b>	<b>90</b>	<b>245</b>

Source: Statistics Canada 2007.  
Hines Creek, Alberta. 2006 Community Profiles. 2006 Census.  
Statistics Canada Catalogue no. 92-591-XWE. Ottawa. Released March 13, 2007.

## Income

### Percent of Population 15+ by Income Bracket - Hines Creek vs Alberta (2005)



Source: Statistics Canada 2007.  
 Hines Creek, Alberta. 2006 Community Profiles. 2006 Census.  
 Statistics Canada Catalogue no. 92-591-XWE. Ottawa. Released March 13, 2007.

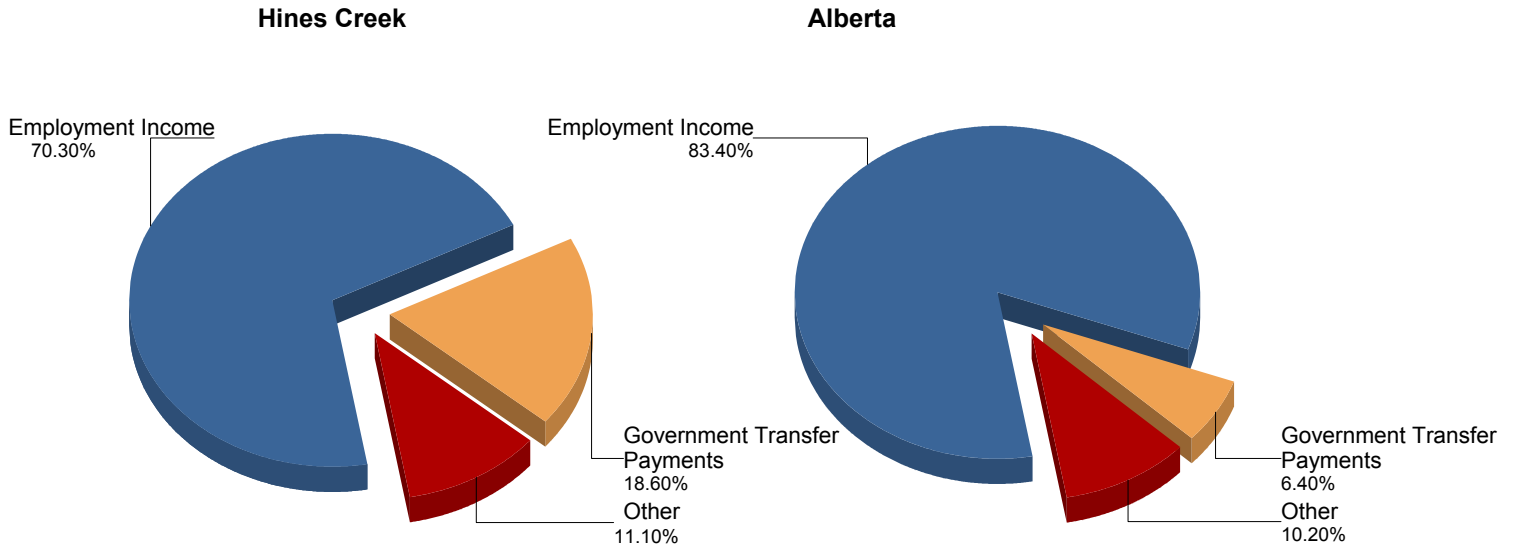
### Population 15+ by Total After Tax Income - Hines Creek (2005)

	Males	Females	Total
Without After-Tax Income	0	0	0
Under \$1,000	10	0	10
\$1,000 to \$2,999	0	0	0
\$3,000 to \$4,999	0	15	15
\$5,000 to \$6,999	0	15	15
\$7,000 to \$9,999	0	10	10
\$10,000 to \$11,999	15	10	25
\$12,000 to \$14,999	0	20	20
\$15,000 to \$19,999	25	30	55
\$20,000 to \$24,999	30	0	30
\$25,000 to \$29,999	35	10	45
\$30,000 to \$34,999	20	0	20
\$35,000 to \$39,999	25	0	25
\$40,000 to \$44,999	0	0	0
\$45,000 to \$49,999	0	0	0
\$50,000 and over	20	10	30
<b>Total</b>	<b>185</b>	<b>130</b>	<b>315</b>

Due to rounding consolidating the shown income brackets may lead to errors. Such errors would be most pronounced for small communities.

Source: Statistics Canada 2007.  
 Hines Creek, Alberta. 2006 Community Profiles. 2006 Census.  
 Statistics Canada Catalogue no. 92-591-XWE. Ottawa. Released March 13, 2007.

## Composition of Family Income for Economic Families - Hines Creek vs Alberta (2005)



Economic family total income - The total income of an economic family is the sum of the total incomes of all members of that family.

Source: Statistics Canada 2007.  
 Hines Creek, Alberta. 2006 Community Profiles. 2006 Census.  
 Statistics Canada Catalogue no. 92-591-XWE. Ottawa. Released March 13, 2007.

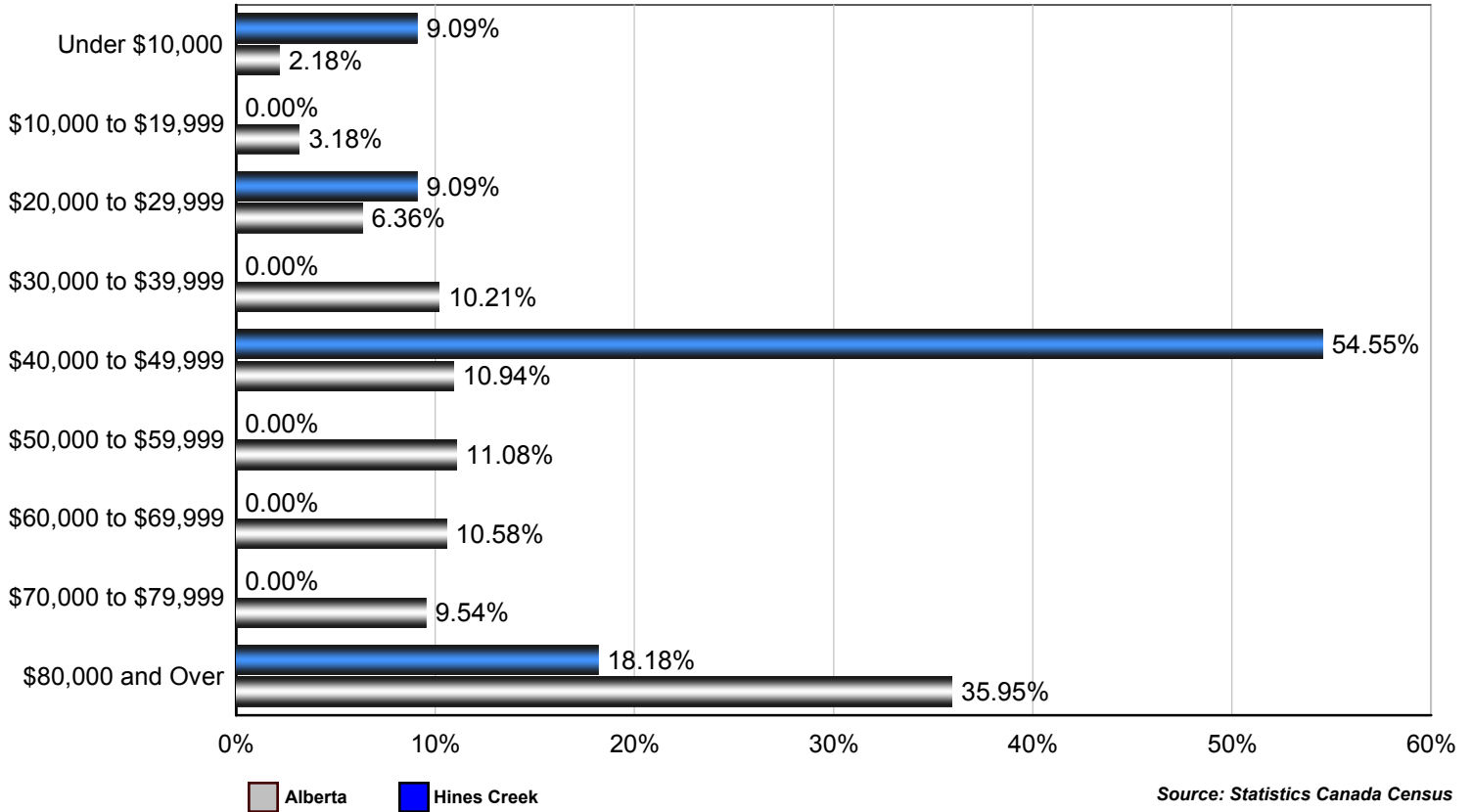
## Population 15+ With Employment Earnings - Hines Creek (2005)

	Males	Females	Total
Earnings - As a % of total Earnings	89%	58%	75%
Median Employment Earnings	\$29,968	\$8,713	\$21,084
Average Employment Earnings	\$31,617	\$24,158	\$29,283

Source: Statistics Canada 2007.  
 Hines Creek, Alberta. 2006 Community Profiles. 2006 Census.  
 Statistics Canada Catalogue no. 92-591-XWE. Ottawa. Released March 13, 2007.

# Hines Creek

## Percent of Total Economic Families by After-tax Income Brackets - Hines Creek vs Alberta (2005)



## Number of Economic Families by After-tax Income Brackets - Hines Creek (2005)

Income Bracket	Number of Families
Under \$10,000	10
\$10,000 to \$19,999	0
\$20,000 to \$29,999	10
\$30,000 to \$39,999	0
\$40,000 to \$49,999	60
\$50,000 to \$59,999	0
\$60,000 to \$69,999	0
\$70,000 to \$79,999	0
\$80,000 and over	20
<b>Total</b>	<b>110</b>

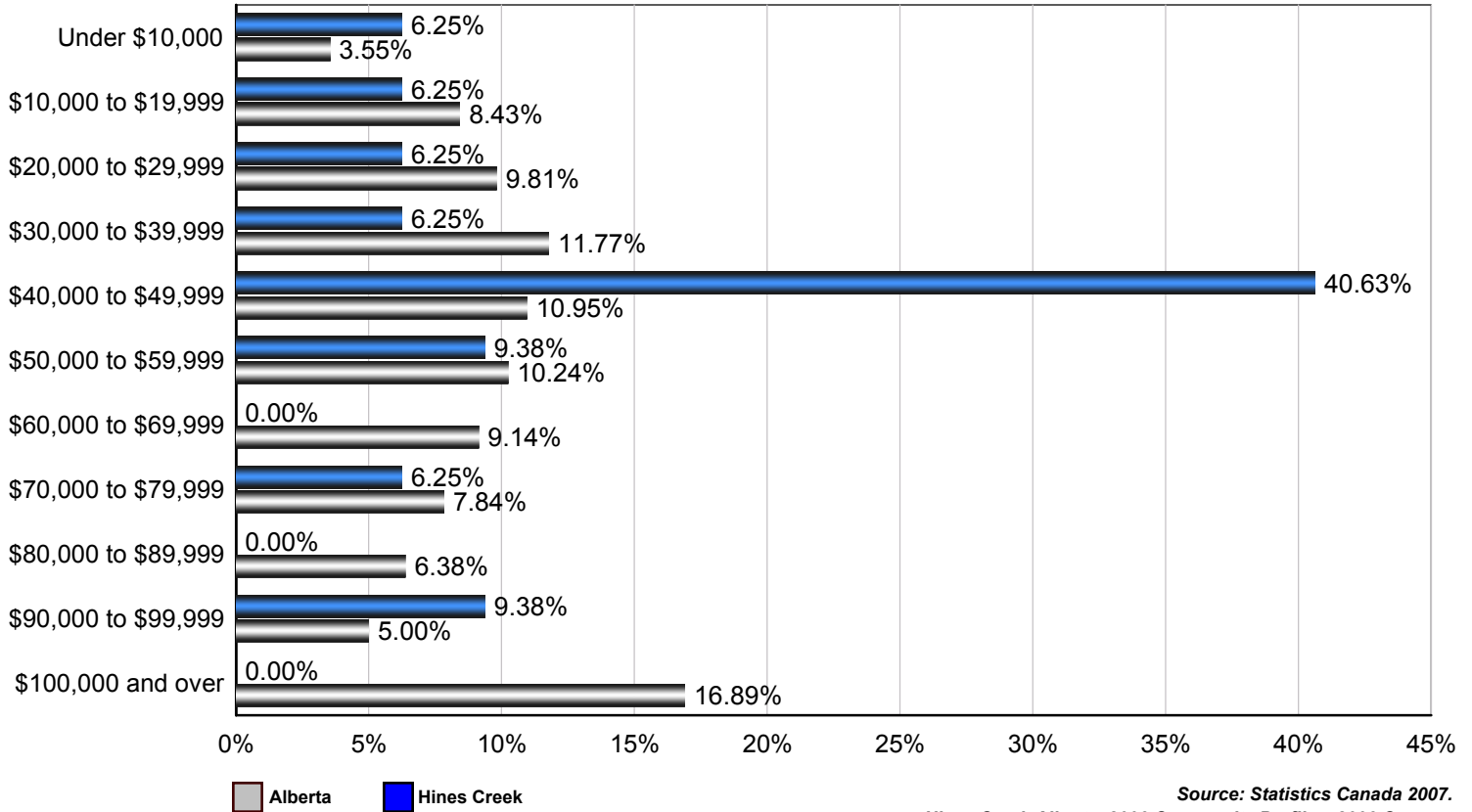
Family Income	
Median After-Tax Family Income	\$41,350
Average After-Tax Family Income	\$50,914

Due to rounding consolidating the shown income brackets may lead to errors. Such errors would be most pronounced for small communities.

Source: Statistics Canada 2007.  
Hines Creek, Alberta. 2006 Community Profiles. 2006 Census.  
Statistics Canada Catalogue no. 92-591-XWE. Ottawa. Released March 13, 2007.

# Hines Creek

## Percent of Total Private Households by After-tax Income Brackets - Hines Creek vs Alberta (2005)



Source: Statistics Canada 2007.  
 Hines Creek, Alberta. 2006 Community Profiles. 2006 Census.  
 Statistics Canada Catalogue no. 92-591-XWE. Ottawa. Released March 13, 2007.

## Number of Private Households by After-tax Income Brackets - Hines Creek (2005)

Income Bracket	Number of Families
Under \$10,000	10
\$10,000 to \$19,999	10
\$20,000 to \$29,999	10
\$30,000 to \$39,999	10
\$40,000 to \$49,999	65
\$50,000 to \$59,999	15
\$60,000 to \$69,999	0
\$70,000 to \$79,999	10
\$80,000 to \$89,999	0
\$90,000 to \$99,999	15
\$100,000 and Over	0
<b>Total</b>	<b>160</b>

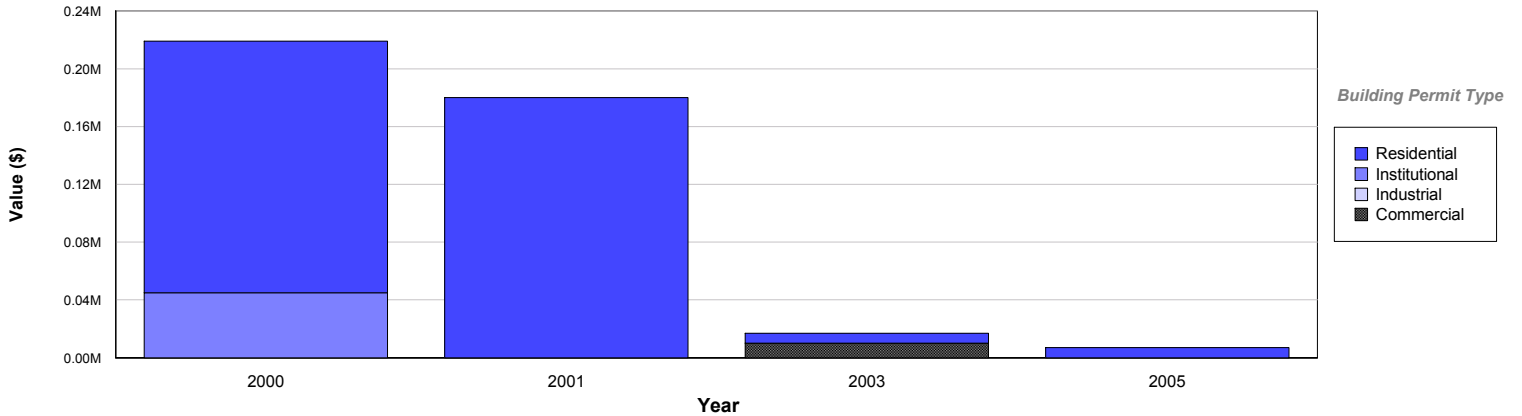
Family Income	
Median After-Tax Family Income	\$41,361
Average After-Tax Family Income	\$48,208

Due to rounding consolidating the shown income brackets may lead to errors. Such errors would be most pronounced for small communities.

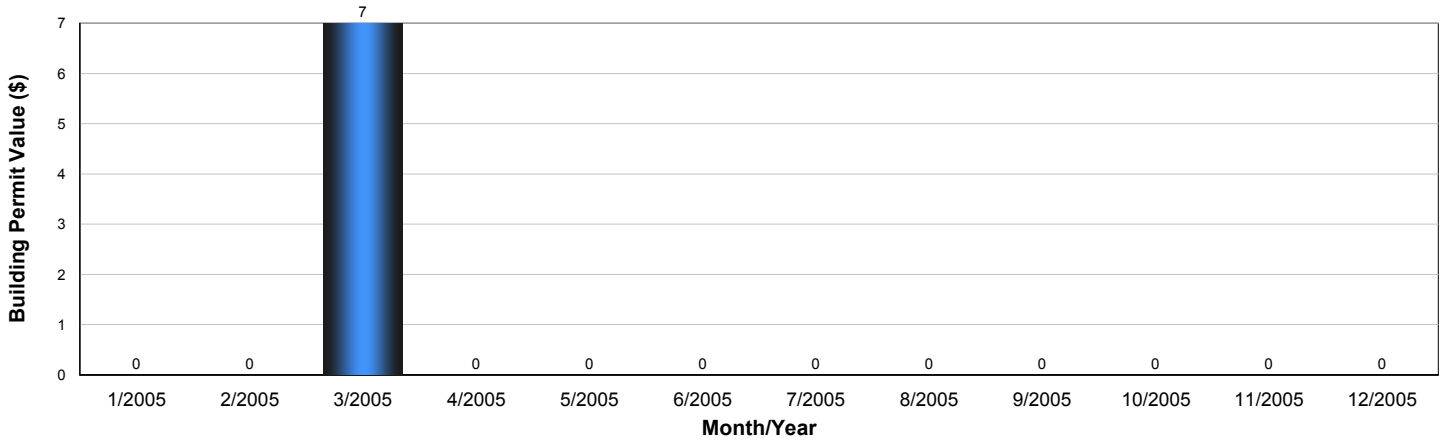
Source: Statistics Canada Census

## Building Permits

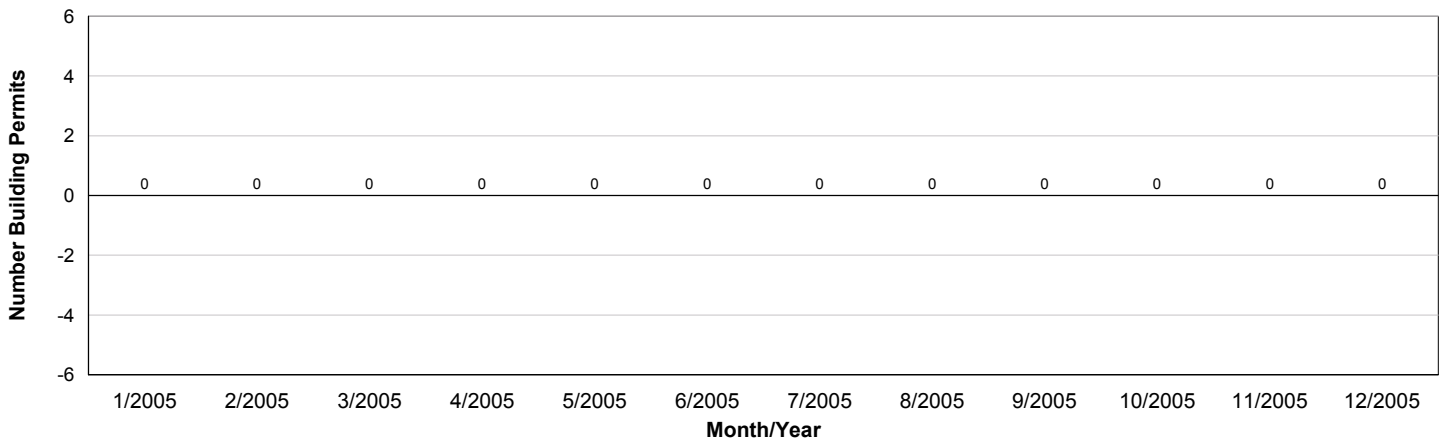
### Value of Building Permits - Hines Creek



Year	Residential	Industrial	Commercial	Institutional	Total
2005	\$7,000	\$0	\$0	\$0	\$7,000
2003	\$7,000	\$0	\$10,000	\$0	\$17,000
2001	\$180,000	\$0	\$0	\$0	\$180,000
2000	\$174,000	\$0	\$0	\$45,000	\$219,000



### Number of Building Permits - Hines Creek

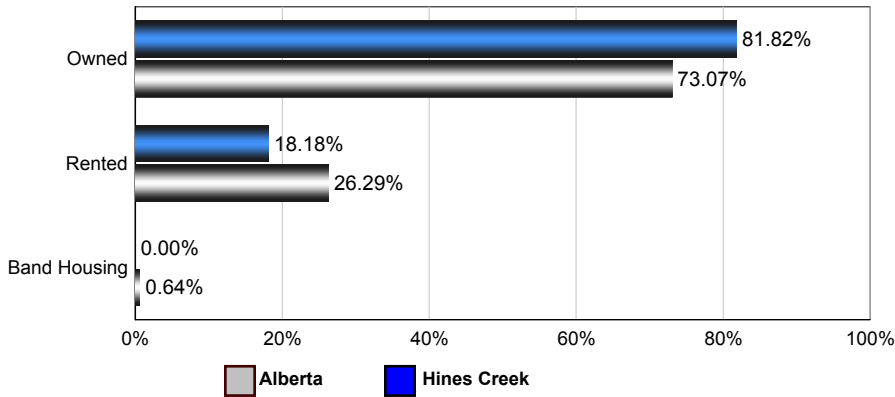


Source: Statistics Canada, Building Permits / Permis de bâtir, Publication 64-001-XWF, 2000 - 2009.

## Dwellings

### Number of Occupied Private Dwellings by Ownership - Hines Creek

#### Hines Creek vs Alberta (2006)



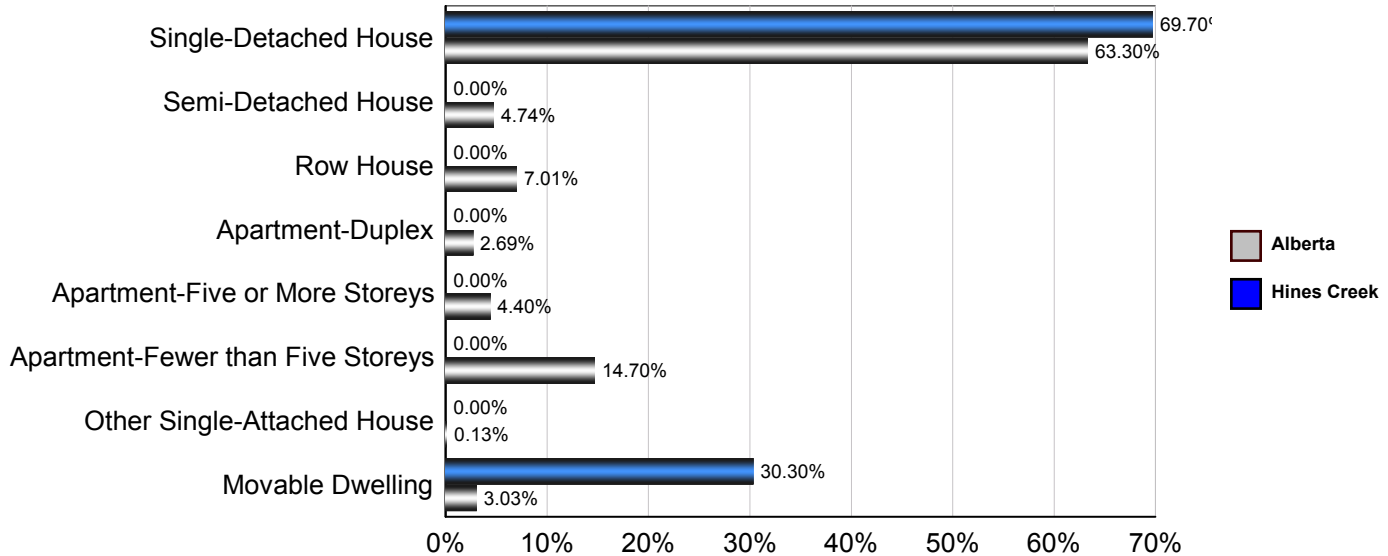
#### Hines Creek

	1996	2001	2006
Owned	115	135	135
Rented	55	35	30
Band Housing	0	0	0
<b>Total</b>	<b>170</b>	<b>170</b>	<b>165</b>

Source: Statistics Canada 2007.  
Hines Creek, Alberta. 2006 Community Profiles. 2006 Census.  
Statistics Canada Catalogue no. 92-591-XWE. Ottawa. Released March 13, 2007.

### Number of Occupied Private Dwellings by Structural Type - Hines Creek

#### Hines Creek vs Alberta (2006)



#### Hines Creek

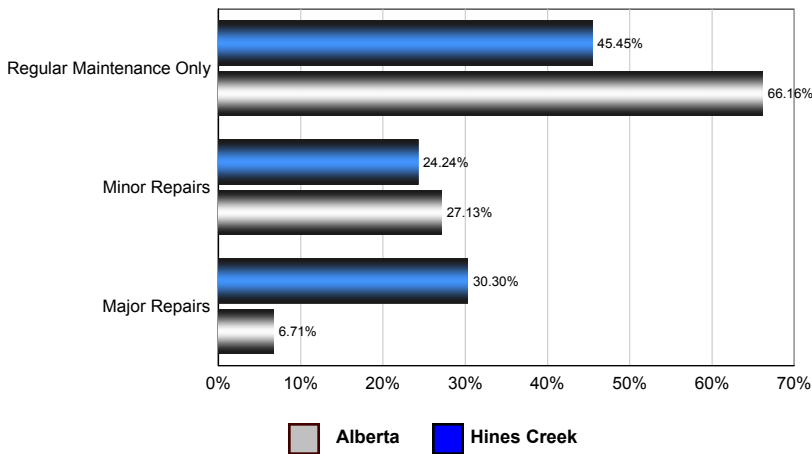
	1996	2001	2006
Single-Detached House	125	135	115
Semi-Detached House	0	0	0
Row House	10	0	0
Apartment - Duplex	0	0	0
Apartment - Five or More Storeys	0	0	0
Apartment - Fewer than Five Storeys	10	10	0
Other Single-Attached House	0	0	0
Movable Dwelling	25	25	50
<b>Total</b>	<b>170</b>	<b>170</b>	<b>165</b>

Source: Statistics Canada 2007.  
Hines Creek, Alberta. 2006 Community Profiles. 2006 Census.  
Statistics Canada Catalogue no. 92-591-XWE. Ottawa. Released March 13, 2007.

# Hines Creek

## Number of Occupied Private Dwellings by the Condition of Dwelling - Hines Creek

### Hines Creek vs Alberta (2006)



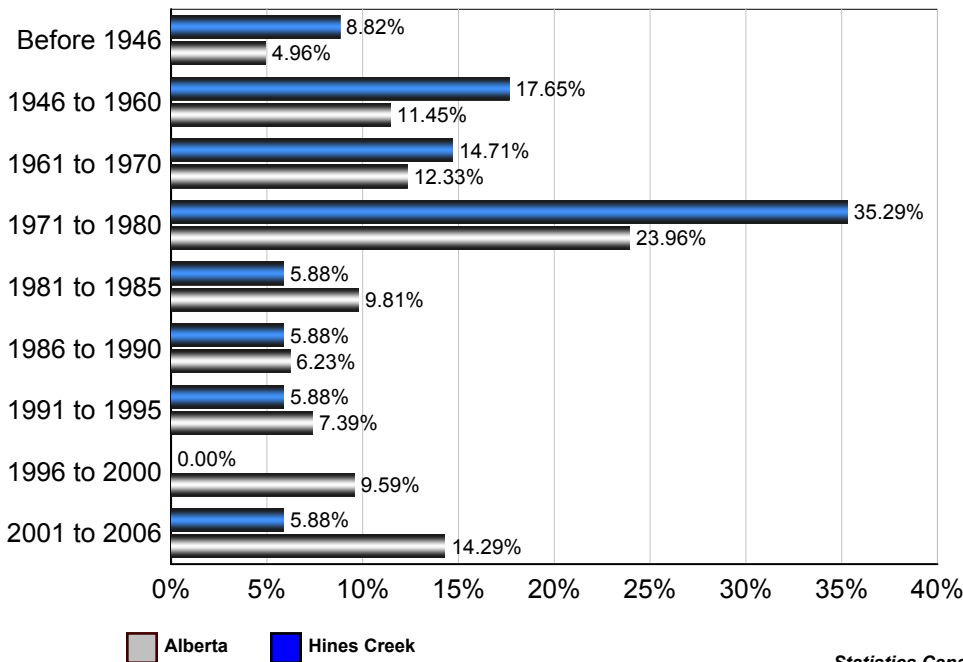
### Hines Creek

	1996	2001	2006
Regular Maintenance Only	90	50	75
Minor repairs	50	95	40
Major repairs	25	25	50
<b>Total</b>	<b>165</b>	<b>170</b>	<b>165</b>

Source: Statistics Canada 2007.  
Hines Creek, Alberta. 2006 Community Profiles. 2006 Census.  
Statistics Canada Catalogue no. 92-591-XWE. Ottawa. Released March 13, 2007.

## Number of Occupied Private Dwellings by Period of Construction - Hines Creek

### Hines Creek vs Alberta (2006)



### Hines Creek

	2006
Before 1946	15
1946 to 1960	30
1961 to 1970	25
1971 to 1980	60
1981 to 1985	10
1986 to 1990	10
1991 to 1995	10
1996 to 2000	0
2001 to 2006	10
<b>Total</b>	<b>170</b>

Source: Statistics Canada 2007.  
Hines Creek, Alberta. 2006 Community Profiles. 2006 Census.  
Statistics Canada Catalogue no. 92-591-XWE. Ottawa. Released March 13, 2007.

