

Rockyford

Welcome

Welcome to our Community

Area Overview

The Village of Rockyford was first settled in 1913 and takes its name from a "rocky ford" that crossed Serviceberry Creek a half mile south of the village.

Rockyford is a family-oriented agricultural based community which provides close-knit relationships for those who call it home. Less than an hour east of Calgary makes Rockyford the ideal home for commuters who enjoy country living while working in the city. With affordable taxes and its close proximity to Calgary . . . why not consider it for your family?



ALBERTA, THE BEST PLACE TO WORK, LIVE AND DO BUSINESS

The province of Alberta is a leader in the Canadian economy. Alberta has had the fastest growing economy in Canada over the past two decades, with real GDP growth averaging 3.7 percent per year. Highlighting Alberta's success in the past year is:

- Over \$73.2 billion in international exports of goods and services (2004)
- Manufacturing shipments of \$52.6 billion (2004)
- Creation of 40,000 new jobs in 2004 and 433,900 between 1994 and 2004
- Over \$103 billion in major capital projects are proposed, announced, under construction or recently completed (2004)

Source: [Alberta Economic Development](#)



Alberta's Positive Business Climate

- The lowest overall taxes in Canada
- No provincial sales tax
- No general capital or payroll taxes prevalent in other provinces and U.S. states
- A highly entrepreneurial and competitive business community
- A fiscally responsible government that has eliminated its provincial debt, demonstrating to investors the business-like attitude of the government
- A highly skilled, educated and motivated workforce that is the most productive in Canada.

Source: [Alberta Economic Development](#)

Location

HIGHWAY LOCATION

Located approximately half way between Calgary and Drumheller in the County of Wheatland.

20 Km North of Transcanada Highway
90 Km North East of Calgary
60 Km South West of Drumheller

LONGITUDE & LATITUDE

- Longitude 113 – 08'
- Latitude 51 – 14'



MAP OF ALBERTA



MAP OF ROCKYFORD'S LOCATION

PROXIMITY TO OTHER LOCATIONS

Driving Distance from Rockyford	km	miles	Time Required
Calgary (city centre)	92	57	1 hour, 7 minutes
Calgary International Airport	72	45	56 minutes
Edmonton, Alberta	354	220	3 hours, 45 minutes
Vancouver, British Columbia	1058	658	12 hours, 18 minutes
Toronto, Ontario	3376	2098	34 hours, 55 minutes
United States Border (Coutts, Alberta crossing)	329	205	3 hours, 54 minutes

It is important to note that time required is calculated based on 'ideal' traffic and weather conditions

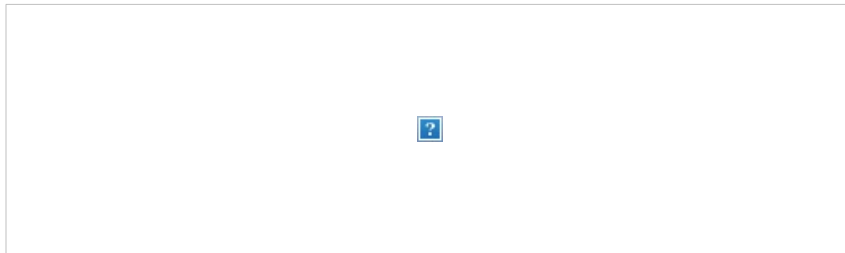
****Distance is measured from city centre to city centre****

Economic Base

ECONOMIC STRENGTHS

An abundance of productive farmland, clean air and water make the Wild Rose Region an attractive place to live and operate a business. The economic base in the Wild Rose area consists of agriculture (wheat, barley, oats, potatoes, canola, rye, flax, hay, beef and dairy cattle, poultry and hogs), agribusiness (feed and fertilizer production), greenhouses, oil and gas, and construction.

The following tables outline the magnitude of agricultural products in the region:

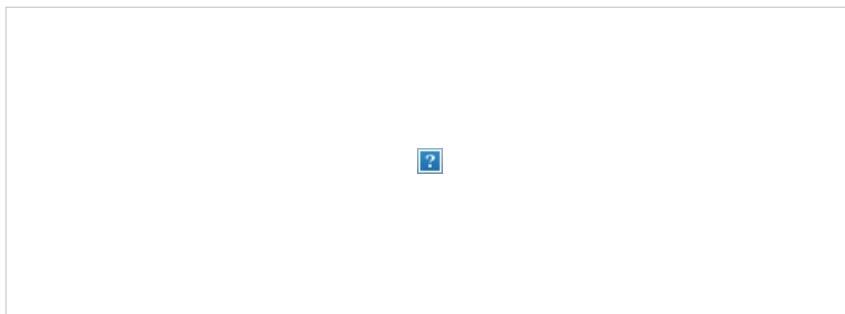


ROCKYFORD BUSINESS DIRECTORY

Rockyford welcomes the entrepreneurial spirit and invites you to investigate the opportunities for business expansion. We do not have a business tax.

To View Rockyford's Business Directory [ENTER HERE](#)

Economic Facts



DEMOGRAPHICS

The population of Rockyford is 375

PROPERTY VALUE ESTIMATES

- **Lot Only** (approx)
Residential - \$25,000 Industrial - \$40,000

WORKERS COMPENSATION

Average cost per \$100 payroll in Manufacturing: \$3-\$4
Average cost per \$100 payroll in Office Work: \$.40
Maximum weekly benefit \$1,176.92

For additional details on the program see:
[Workers Compensation Board](#)

EMPLOYMENT INSURANCE

55% of your average insurable earnings to a maximum of \$413 per week.
For additional information on the program see:
[Employment Insurance Information for Employers](#)

RESEARCH BASE

Being a close neighbor of the City of Calgary, companies located in Rockyford have access to a broad range of research facilities located in and around the City. For additional information on the following research facilities, simply click on the name to access the link.


- [Alberta Research Council](#)
- [Calgary Technologies Inc.](#)
- [Edmonton Economic Development Corporation](#)
- [Food Processing Development Centre](#)
- [TRLabs](#)
- [WurcNet](#)

FURTHER IN-DEPTH INFORMATION

- [Municipal Profiles](#) developed by [Alberta's Ministry of Municipal Affairs](#)
- [Alberta - A Wealth of Opportunity](#) developed by [Alberta Economic Development](#)
- [Alberta Economic Highlights](#) developed by [Alberta Economic Development](#)
- [Alberta Economic Outlook](#) developed by [Alberta Economic Development](#)
- [Alberta Export and Trade](#) developed by [Alberta Economic Development](#)
- [Tourism Reports](#) developed by [Alberta Economic Development](#)
- [Alberta Finance Statistics](#) also contains much information which may be useful.

Utilities

ELECTRICITY and **NATURAL GAS** are deregulated in Alberta.

The Alberta government provides a Web site to provide information to assist consumers to choose the appropriate provider for their residence or business. To learn more about electrical or natural gas providers visit [Customer Choice](#) 

Regulated Rate Providers for Community of Rockyford are:

ELECTRICAL POWER

- [Epcor](#)
- [FortisAlberta](#)

NATURAL GAS

- [Direct Energy Regulated Services](#)
- [Atco](#)

WATER & WASTE

- [Rockyford Water Treatment Plant](#)
403-533-3796
- Cost of Water Supply .95/Cu M... plus flat distribution cost of \$27.50/mo



Alberta's commitment to water resources is three-fold: a safe, secure drinking water supply, healthy aquatic ecosystems, and reliable, quality water supplies for a sustainable economy. [Alberta Environment](#) has developed water programs that include studying, monitoring and testing of water sources. They have established guidelines to ensure quality standards for the many uses of water, and programs to protect ecosystems and enforce regulations.

Alberta has the most stringent drinking water program in the country and was one of the first provinces to fully adopt the [Canadian Guidelines for Drinking Water Quality](#) as a minimum standard. Alberta Environment strives for continuous improvement in its program and works closely with [Alberta Health and Wellness](#) to ensure Albertans continue to enjoy high-quality drinking water.

Waste Management

GARBAGE COLLECTION

- Garbage Collection picked up once a week on Tuesdays
- Garbage Transfer Site - One kmsouth of Rockyford
- Cost Of Garbage...\$11.00/mo

COMMUNICATIONS



TELEPHONE

- [Telus](#)

INTERNET SERVICE

- [Telus](#)

CABLE TELEVISION

- [Persona Communications](#)

LOCAL/REGIONAL NEWSPAPERS

- [The Valley Times](#)
- [Drumheller Mail](#)
- [Strathmore Standard](#)
- [The Calgary Herald](#)
- [The Calgary Sun](#)

Transportation

HIGHWAYS

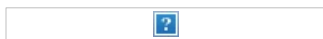


The Town of Rockyford located approximately half way between Calgary and Drumheller.

20 km north of Transcanada Highway
8 kmeast of Hwy 21
18 kmsouth of Hwy 9

For manufacturers and producers who need assistance to determine the most cost-effective and efficient transportation method, AlbertaFORT provides a "virtual" gateway to assist with transportation logistics at www.alberta-canada.com/altaport/.

AIR SERVICES



- The nearest commercial and air freight services are at [Calgary International Airport](#).
- 72 kms from Rockyford.
- For a listing of non-stop passenger destinations visit [Passenger Non-stop Destinations](#).

POSTAL & COURIERS



Canada Post, Purolator, UPS, Loomis and FedEx all provide delivery services to Rockyford. Canada Post fills a vital need in the region providing cost-effective and timely mail delivery. In its mission to provide innovative physical and electronic delivery solutions creating value for its customers, Canada Post works with its business customers to ensure their mail communication needs are achieved.

In 2001, Canada Post received an on-time, combined service performance score of 96.4% on properly prepared letter mail.

For more information on service in Rockyford contact: [Canada Post](#), [Purolator](#), [UPS](#), [Loomis](#), [FedEx](#).

Community Lifestyle

PEACE OF MIND

Rockyford is part of the Wild Rose Region. Many residents and business owners choose to locate in the Region because of the safety and security of small town living. As indicated by the below table, crime statistics are substantially lower in the region than typical of a larger metropolitan center like the City of Calgary.



Rockyford offers residents rural community values and an affordable country lifestyle close to the amenities within the region and the neighboring metropolitan centers. Despite favorable economic growth, it's still very affordable to buy a home and live in the Wild Rose Region.

The region offers the most affordable local utilities, based on comparison with Calgary and area utilities. In the Wild Rose Region, local utilities (water, sewer and garbage) are approximately 26% lower than the average of communities in and around Calgary (Benchmarks Nichols Applied Management, 2000).

ROCKYFORD RECREATION & SPORTS



■

Rockyford Sportplex has a Skating /Hockey/Ringette Arena


- Two sheet curling rink
- Community Center
- Seniors Friendship and Drop in Center
- Municipal Library
- Gymnasium
- Volleyball court

Outdoor Facilities

- Playgrounds (3)
- Baseball diamonds (2)
- Tennis court
- Memorial Park, campground and rodeo grounds.

CULTURE & SPECIAL EVENTS

- Rockyford Lions Rodeo

This friendly small town puts on the "Biggest Little Show in Alberta" in late July. It's much more than just a rodeo in Rockyford; wild cow milking, sheep riding, mutton busting, relay, businessmen's wild cow riding, poker bull fight, a parade, beer gardens, kids midway, chuck wagon races and much more. Gate admission covers all rodeo, events & wagons. 

For More Information [email](#) or call *403-533-3773 * 403-533-3771 * 403-533-3950

- Chrissie's Antique Bottle Collection



For a unique view of the past, you will want to see this collection of over 1000 bottles lovingly gathered over many years by Chrissie Pedersen, these bottles range around the world and across many generations. Teeny-tiny bottles, big bottles, antique bottles, Avon bottles and many others make up this fascinating collection. More recently, other antiques have been included to the collection including syrup, tobacco and honey cans and antique cigar boxes.

Open May to October. Call for hours or to arrange a visit or tour.

Contact person: Doug or Brenda address: Box 294 Rockyford, AB T0J 3Y0 phone: 403-533-3737 fax: 403-533-3744

email: jobb@telusplanet.net

Website: [Antique Bottle Collection](#)

ROCKYFORD CLUBS & ORGANIZATIONS

To view the complete list of Rockyford Clubs and Organizations [ENTER HERE](#)

TOURIST ATTRACTIONS

Rockyford is in close proximity to numerous unique cultural and tourist attractions, visit the following sites:

For information about Things to See and Do, Places to Stay, Services, Communities, Where are We, Road Conditions, and Weather, [click here](#).

[Canadian Badlands](#) - Carbon is part of the [Travel Alberta](#) tourism region known as the Canadian Badlands. For information about the Badlands'

Roots in Pre-History, Human Heritage, Parks, Green Spaces, & Fun visit site.

[Royal Tyrrell Museum](#) - Begin your journey through geological time. With every step, you'll experience the evolution of life. From sea dwellers to the Tyrrell's BIG attraction, the dinosaurs; to the rise of those furry little mammals and many of Earth's inhabitants in between. It's all here. Dozens of skeletons and hundreds of fossils that tell the story of ancient Alberta.

Open Victoria Day Weekend to Labor Day Weekend 9am to 9pm daily.

Open remainder of year 10am to 5pm Tuesday to Sunday. Call 1-888-440-4240.

[That's Crafty Craft Barn and Tea House](#) - Ever consider shopping in a barn? See the talent of local artisans at Rosebud's That's Crafty. Open March to Christmas.

10am to 5pm Monday to Saturday.

[Rosebud Country Inn](#) - a striking bed and breakfast set in the Rosebud river valley

[North Bow Lodge](#) - a beautiful lodge set 50 feet from some of the best trout fishing in North America.

[Rosebud Dinner Theatre](#) - set in the picturesque valley on the edge of the Canadian badlands. Over 20,000 visitors a year enjoy the dynamic theatre and home cooked meals.

[St. Ann Ranch](#) - an attractive 30 room mansion situated on 20 acres that has been declared a provincial historic site.

[Bar B Guest House](#) - visitors enjoy the quiet country setting on a working farm

[Sproule Heritage Place](#) - this elegant bed and breakfast, now a provincially designated historic site, gained notoriety when it was featured in a Christmas Hallmark card commercial.

[Coyote Crossing Cottage](#) - this handcrafted log home sleeps up to six people and is located on a family owned ranch just minutes off of the Trans-Canada highway near Strathmore.

[T.L. Bar Ranch](#) - nestled in the "valley of the dinosaurs". Horseback riding is the main activity, daily checking the cattle and fences. Canoeing and fishing opportunities. Close proximity (65 km/40 miles) to the Tyrrell Museum

[Buffalo Jump Canyon Ranch](#) - exclusive outfitters to Dry Island Buffalo Jump, the ranch provides breathtaking scenery ranging from peaceful forest to rugged badlands.

[Passion Play](#) - set in the spectacular badlands, the play has been described as "life changing", "moving" and "world class". Held each summer in July.

Education



Rockyford AB T0J 2R0
(403) 533-3802 Phone
(403) 533-2106 Fax
Email: rprocter@goldenhills-schools.com
Website: [Rockyford School](#)

Rockyford School

Rockyford is part of the [Golden Hills Regional Division No.75](#) headquartered in Strathmore (Tel: 403-934-5121).

Rockyford School, with students from ECS to grade nine, has maintained high standards, both in behavior and in academic achievement.

After undergoing extensive modernization in 1997, Rockyford School has a fresh new appearance. Recent initiatives have contributed to a school ground beautification project.

Locally [Rockyford School](#) offers education from ECS through to grade 9.

Grade 10 to 12 Students commute approximately 20 minutes by bus to [Standard High School](#).

Rockyford School
Box 266

In 2002/2003 Alberta spent \$8,800 to education a student and the student to teacher ratio was just under 18.

Source: Culture, Tourism and Centre for Education Statistics, Summary Public School Indicators for the Provinces and Territories, 1996-97 - 2002-03 (Statistics Canada)

Post Secondary



The Town of Rockyford is part of the Wild Rose Region and is in close proximity to world-class education facilities.

For information on Educational Opportunities in the Region visit the corresponding websites on the facilities listed:

- **University of Calgary**
Tel: 403-2205110 www.ucalgary.ca
- **Southern Alberta Institute of Technology**
Tel: 403-284-7248 www.sait.ab.ca
- **Mount Royal**
Tel: 403-240-6111 www.mountroyal.ab.ca
- **Alberta College of Art and Design**
Tel: 403-284-7600 www.acad.ab.ca
- **DeVry Canada**
Tel: 403-235-3450 www.devry.ca
- **Olds Agricultural College**
Tel: 1-800-661-6537 or 403- 556-8281 www.oldscollege.ab.ca/
- **Red Deer Junior College**
Tel: 403- 342-3300 www.rdc.ab.ca/

Distant Learning

- **Athabasca University**
Tel: 403-263-6465
www.athabascau.ca

OTHER EDUCATIONAL OPPORTUNITIES within close proximity are:

Prairie Bible Institute offers a wide range of programs, including ministry, aviation, drama, wilderness leadership and music, to students from over 20 countries around the world. Students can earn a one-year certificate or a four-year degree.

Covenant Bible College is an eight-month program of Christian discipleship. The Strathmore campus is one of three campuses, with the other two located in Colorado and Ecuador.

Rosebud School of the Arts offers a unique blend of practical and theoretical training in the performing arts. In addition to the arts program Rosebud provides apprenticeship programs in the hospitality industry.

Health Care

Rockyford is part of the **CALGARY HEALTH REGION** and is serviced by the Strathmore District Health Services 40 kms away.

HOSPITAL

The Strathmore & District Health Care Centre is part of a regional health care system, and has 25 active-care beds and 23 extended-care beds.

Phone:(403) 934 0126 Fax: (403) 934 0173.
~ 200 Brent Blvd., Strathmore, Alberta T1P 1J9 ~

Signage directing you to the Diagnostic Imaging Department is located on the main floor, inside the main entrance of the Strathmore Health Unit.

The following DI services are provided at the Strathmore Health Unit:

- General Radiography
- Fluoroscopy
- Ultrasound
- ECG

Professional Services include:

- Physicians
- Radiologists
- Gerontologist



- Recreation Therapist
- Respiratory Therapist
- Orthotics Consultant
- Orthopedic Consultant
- Laboratory Consultant
- Pharmacists
- Dietician
- Dentists
- Chiropractors

Health unit services are also provided out of the hospital. Strathmore also has 2 medical clinics, 1 nursing home and 2 seniors housings.

Emergency Services

POLICE, FIRE, AMBULANCE 911

AMBULANCE/ FIRST RESPONSE

FIRE PROTECTION

- Volunteer Fire Department
- Modern equipment manned by volunteers
- Trained emergency medical helpers (First Response Team)

POLICE SERVICES

- Strathmore R.C.M.P. 40 km away

Community Services

Rockyford Village Office

Box 294 Rockyford, Alberta T0J 2R0
 Telephone: (403) 533-3950 Fax: (403) 533-3744
 E-Mail: rockyford@calinser.com

Community Futures Wild Rose

Community Futures Wild Rose is a user-friendly business development centre, entrepreneurial development centre, career and employment centre, and a key partner in community economic development in the Wild Rose Region. Specific services we provide include:

- Fully repayable business loans up to \$150,000
- Free job posting service with in-office paper job board and online job bank
- Career counselling and job search assistance including resume and cover letter preparation assistance
- Free internet and computer access, plus access to printing and photocopying
- Small business training through the Self Employment Program and free and low cost business seminars via tele-conferencing



Community Futures Wild Rose Contact Information		
Mailing Address	Telephone Numbers	Electronic Contacts
Community Futures Wild Rose PO Box 2159 Strathmore, AB T1P 1K2	Tel: (403) 934-6488 Toll free: (888) 881-9675 Fax: (403) 934-6492	Web: www.cfwildrose.ca

Climate

AVERAGE TEMPERATURE

January

Maximum temperature = -5.5 Celsius

Minimum temperature = -17.3 Celsius

July

Maximum temperature = 24.5 Celsius Minimum temperature = 9.4 Celsius

Annual precipitation = 336.3 mm

Source: [Environment Canada](#)

Key Contacts

Rockyford Village Office

Box 294
Rockyford, Alberta T0J 2R0
Telephone: (403) 533-3950 Fax: (403) 533-3744
E-Mail: rockyford@calinser.com

Community Futures Wild Rose

Community Futures Wild Rose is a user-friendly business development centre, entrepreneurial development centre, career and employment centre, and a key partner in community economic development in the Wild Rose Region. Specific services we provide include:

- Fully repayable business loans up to \$150,000
- Free job posting service with in-office paper job board and online job bank
- Career counselling and job search assistance including resume and cover letter preparation assistance
- Free internet and computer access, plus access to printing and photocopying
- Small business training through the Self Employment Program and free and low cost business seminars via tele-conferencing



Community Futures Wild Rose Contact Information

Mailing Address	Telephone Numbers	Electronic Contacts
Community Futures Wild Rose PO Box 2159 Strathmore, AB T1P 1K2	Tel: (403) 934-6488 Toll free: (888) 881-9675 Fax: (403) 934-6492	Web: www.cfwildrose.ca

Provincial

Walter Valentini
Regional Manager
[Alberta Economic Development](#)
#300, 639 - 5 Avenue, SW
Calgary, Alberta T2P 0M9

(403) 297-8920 phone (403) 297-6168 fax
E-Mail: walter.valentini@gov.ab.ca
E-Mail: dianne.fitzsimmons@gov.ab.ca

Member of the Legislative Assembly (MLA) (December 2006)
Hon. Lyle Oberg MD, Minister of Finance
Strathmore-Brooks Constituency
408 Legislature Building
10800 97 Avenue
Edmonton, Alberta
T5K 2B6
Telephone: (780) 427-8809
Facsimile: (780) 428-1341

Federal

Kevin Sorenson [Member of Parliament \(MP\)](#)
Crowfoot Constituency

Room 518 Justice Building
House of Commons
Ottawa, Ontario K1A 0A6

(613) 947-4608 phone
(613) 947-4611 fax
Email: sorenson.k@parl.gc.ca

Constituency Office
4945 - 50 Street
Camrose AB T4V 1P9
(780) 608-4600 phone or 1-800-665-4358
(780) 608-4603 fax
Email: sorenk1@parl.gc.ca

Google Map



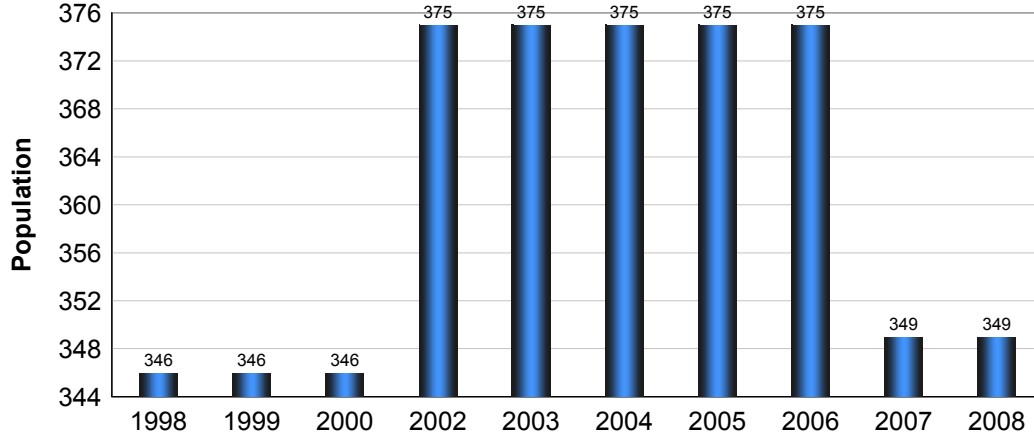
Disclaimer: Information in this profile has been provided from a variety of external sources. AlbertaFirst.com Ltd. provides this template, and each community posts their own content within the template. If you find inaccuracies or information you feel needs changing, please contact the community directly. Although every effort has been made to ensure the accuracy, currency and reliability of the content and data, AlbertaFirst.com Ltd. accepts no responsibility in this regard.

©AlbertaFirst.com Ltd., 2010.

A chart or table in this Profile may be blank. This will occur if there was no data available for that community for the specified time period

Municipal Population

Total Population - Rockyford

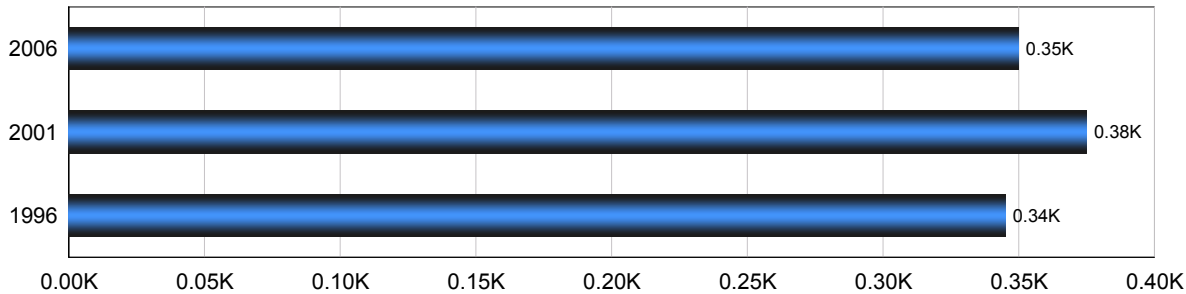


Year	Community Growth	Alberta Growth
2008	0.00%	2.37%
2007	(6.93)%	3.39%
2006	0.00%	1.95%
2005	0.00%	3.91%
2004	0.00%	0.95%
2003	0.00%	1.34%
2001	8.38%	4.02%
2000	0.00%	2.15%
1999	0.00%	3.24%
1998	0.00%	1.33%

Source: Statistics Canada 2007.
Rockyford, Alberta. 2006 Community Profiles. 2006 Census.
Statistics Canada Catalogue no. 92-591-XWE. Ottawa. Released March 13, 2007.

Population

Total Population - Rockyford



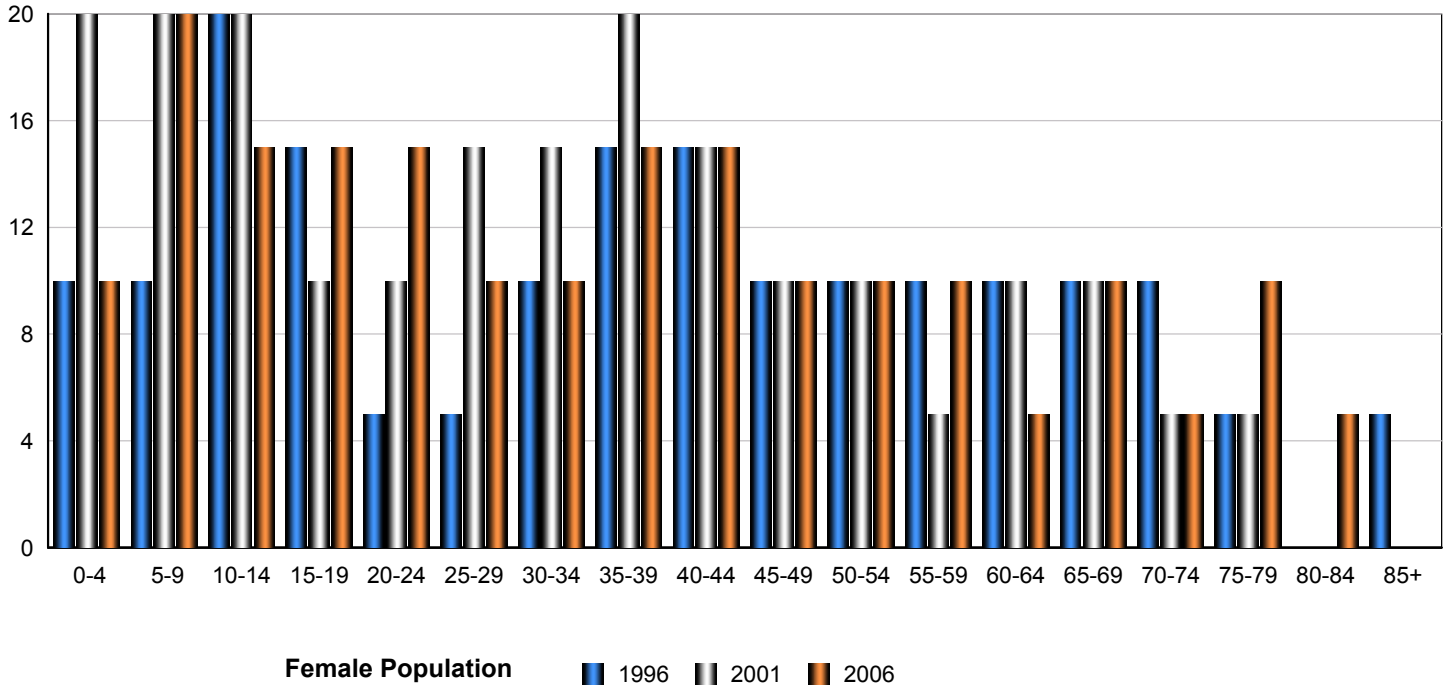
Census Year	Total Population	% Change
2006	350	6.90%
2001	375	8.40%
1996	345	8.80%

Source: Statistics Canada 2007.
Rockyford, Alberta. 2006 Community Profiles. 2006 Census.
Statistics Canada Catalogue no. 92-591-XWE. Ottawa. Released March 13, 2007.

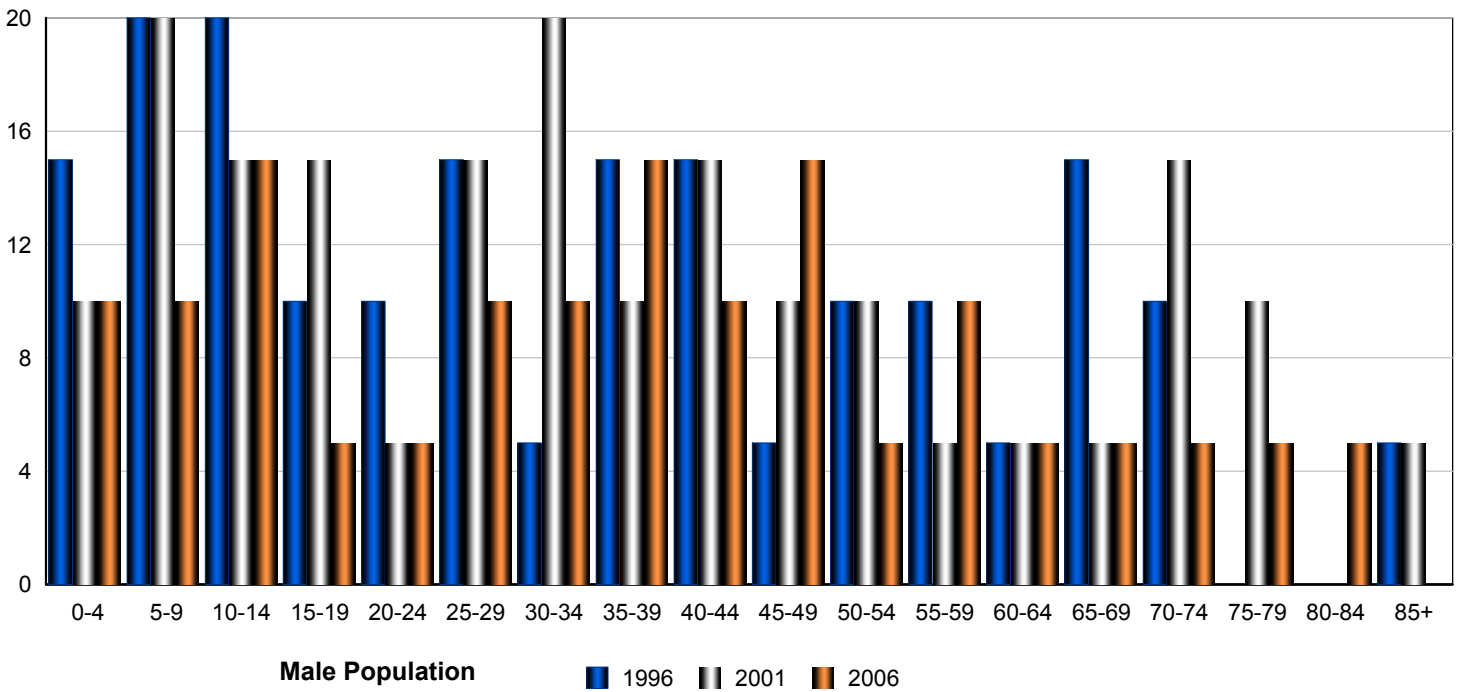
Rockyford

Total Population by Gender and Age - Rockyford

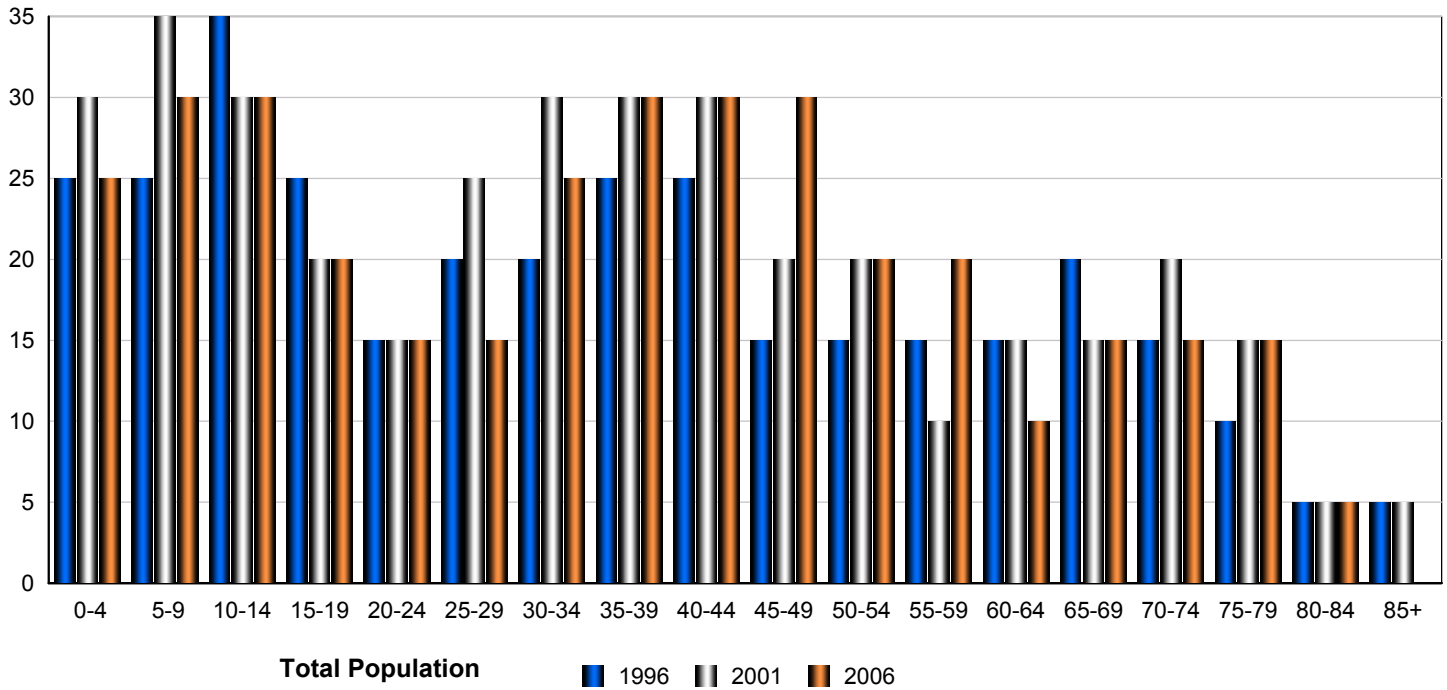
Census Population by Gender - Rockyford



Census Population by Gender - Rockyford



Census Population by Gender - Rockyford



	Male			Female			Total		
	2006	2001	1996	2006	2001	1996	2006	2001	1996
0-4	10	10	15	10	20	10	20	30	25
5-9	10	20	20	20	20	10	30	40	30
10-14	15	15	20	15	20	20	30	35	40
15-19	5	15	10	15	10	15	20	25	25
20-24	5	5	10	15	10	5	20	15	15
25-29	10	15	15	10	15	5	20	30	20
30-34	10	20	5	10	15	10	20	35	15
35-39	15	10	15	15	20	15	30	30	30
40-44	10	15	15	15	15	15	25	30	30
45-49	15	10	5	10	10	10	25	20	15
50-54	5	10	10	10	10	10	15	20	20
55-59	10	5	10	10	5	10	20	10	20
60-64	5	5	5	5	10	10	10	15	15
65-69	5	5	15	10	10	10	15	15	25
70-74	5	15	10	5	5	10	10	20	20
75-79	5	10	0	10	5	5	15	15	5
80-84	5	0	0	5	0	0	10	0	0
85-89	0	5	5	0	0	5	0	5	10
Total	145	190	185	190	200	175	335	390	360

Source: Statistics Canada 2007.
 Rockyford, Alberta. 2006 Community Profiles. 2006 Census.
 Statistics Canada Catalogue no. 92-591-XWE. Ottawa. Released March 13, 2007.

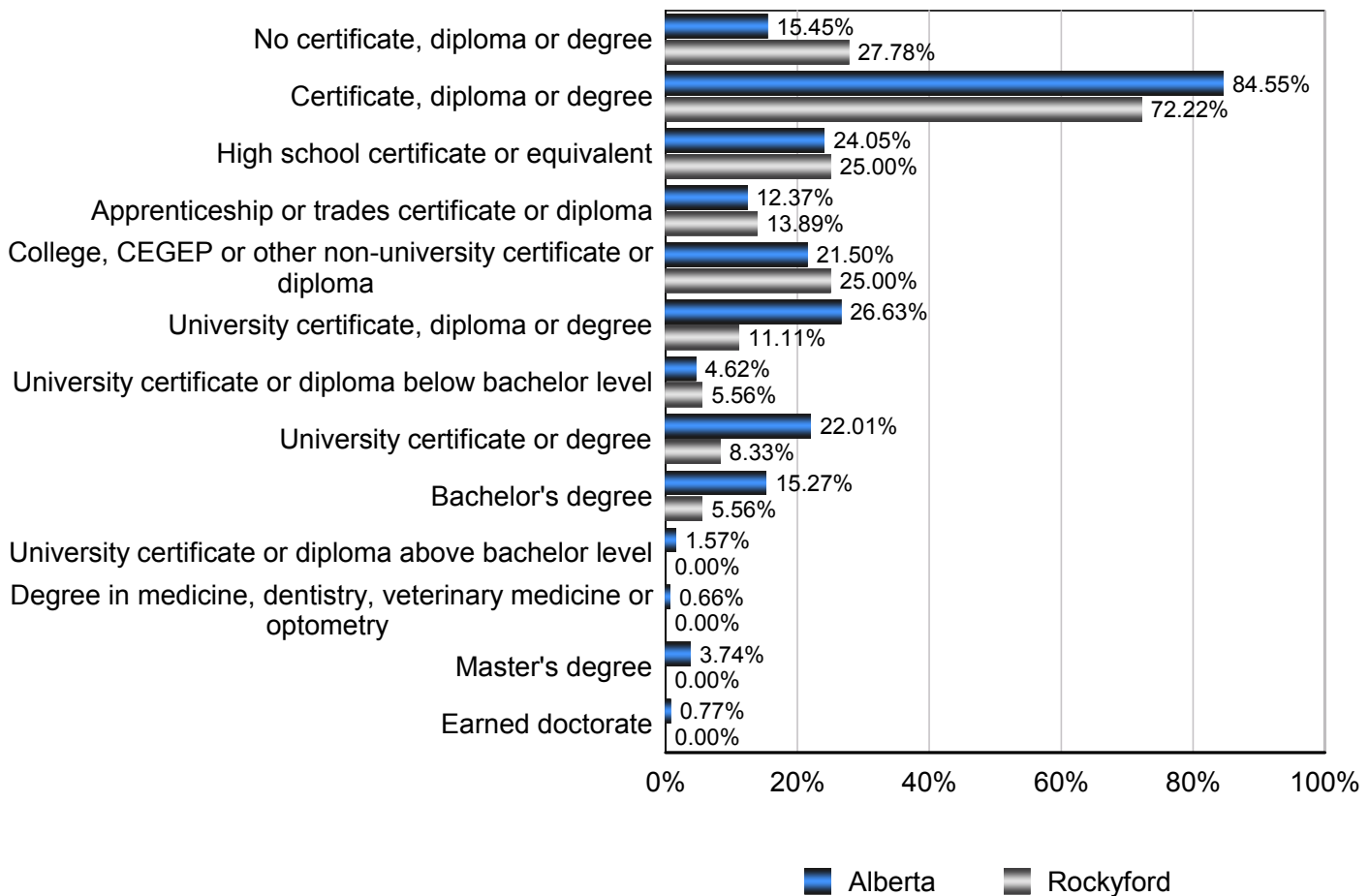
Education Statistics

Highest Level of Schooling, Population Aged 25-64 - Rockyford (2006)

% of Population Aged 25-64

Highest Level of Schooling	Rockyford	Alberta
No certificate, diploma or degree	27.78%	15.45%
Certificate, diploma or degree	72.22%	84.55%
High school certificate or equivalent	25.00%	24.05%
Apprenticeship or trades certificate or diploma	13.89%	12.37%
College, CEGEP or other non-university certificate or diploma	25.00%	21.50%
University certificate, diploma or degree	11.11%	26.63%
University certificate or diploma below bachelor level	5.56%	4.62%
University certificate or degree	8.33%	22.01%
Bachelor's degree	5.56%	15.27%
University certificate or diploma above bachelor level	0.00%	1.57%
Degree in medicine, dentistry, veterinary medicine or optometry	0.00%	0.66%
Master's degree	0.00%	3.74%
Earned doctorate	0.00%	0.77%

Amount by Which the Highest Level of Schooling - Rockyford vs Provincial Average (2006)

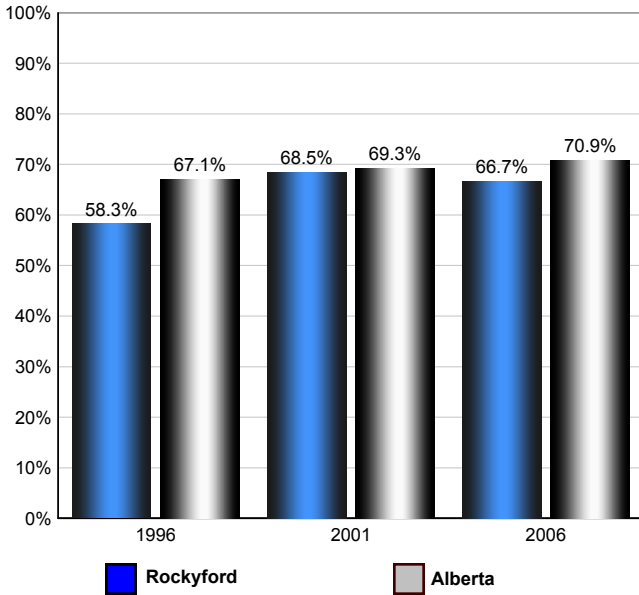


Source: Statistics Canada 2007.
 Alberta, Alberta. 2006 Community Profiles. 2006 Census.
 Statistics Canada Catalogue no. 92-591-XWE. Ottawa. Released March 13, 2007.

Labour Force

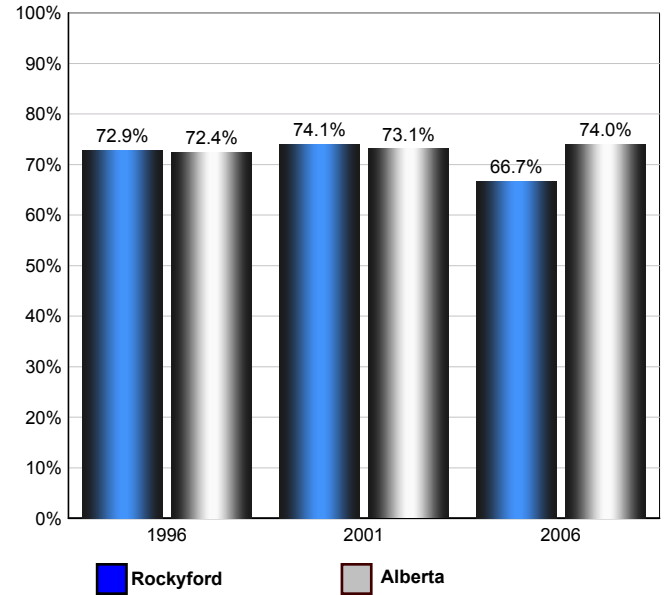
Annual Labour Force Activity Rates - Rockyford vs Alberta

Employment Rate



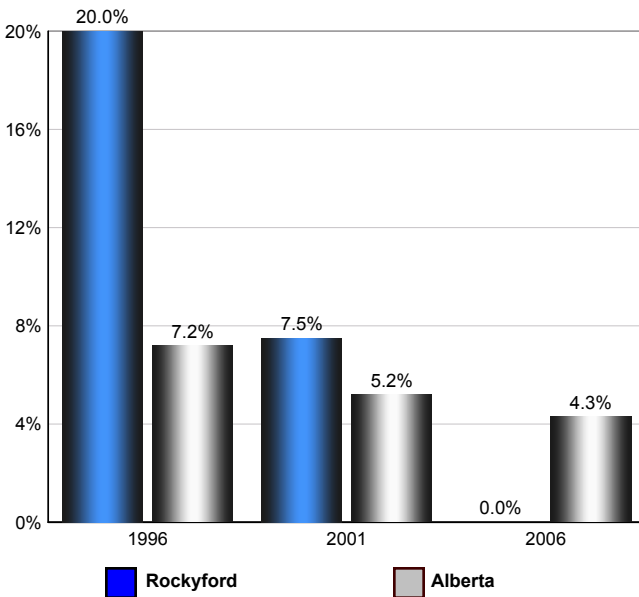
Employment Rate is calculated by dividing the total employed by the total population 15 and over

Participation Rate



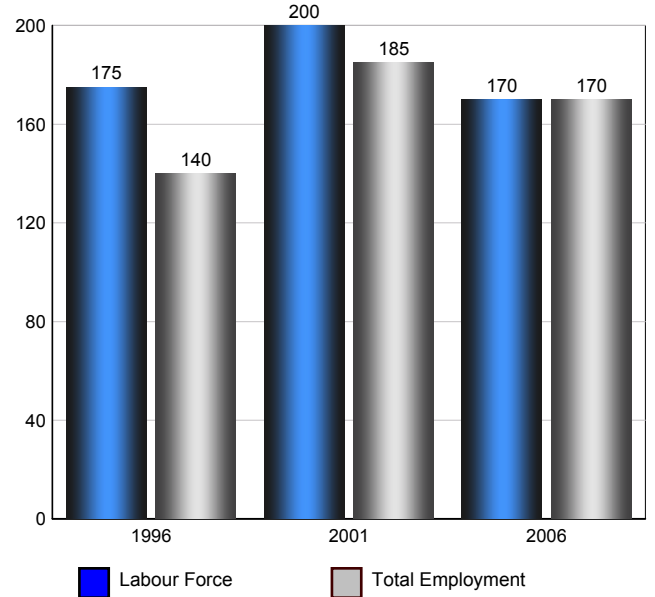
The Participation rate is calculated by summing together the number employed and unemployed and dividing the result by the total population aged 15 and over

Unemployment Rate



The Unemployment rate is calculated by dividing the total number of persons in the labour force that are reported as being unemployed by the total labour force.

Rockyford Labour Force and Total Employment (Age 1



Source: Statistics Canada 2007. Rockyford, Alberta. 2006 Community Profiles. 2006 Census. Statistics Canada Catalogue no. 92-591-XWE. Ottawa. Released March 13, 2007.

Labour Force Age 15+ - Rockyford (2006)

Industry by Gender

Industry	Males	Females	Total
Agriculture, Forestry, Fishing and Hunting	0	0	0
Mining, Oil and Gas Extraction	0	0	0
Utilities	0	0	0
Construction	15	0	15
Manufacturing	10	0	10
Wholesale Trade	0	0	0
Retail Trade	10	10	20
Transportation and Warehousing	30	0	30
Information and Cultural Industries	0	0	0
Finance and Insurance	0	0	0
Real Estate, Rental and Leasing	0	0	0
Professional, Scientific and Technical Services	0	15	15
Management of Companies and Enterprises	0	0	0
Administrative and Support, Waste Management and Remediation Services	0	10	10
Educational services	10	10	20
Health care and social assistance	0	0	0
Arts, Entertainment and Recreation	0	0	0
Accommodation and Food Services	0	0	0
Other Services (except Public Administration)	15	15	30
Public Administration	0	0	0
Total	90	60	150

Source: Statistics Canada 2007.
Rockyford, Alberta. 2006 Community Profiles. 2006 Census.
Statistics Canada Catalogue no. 92-591-XWE. Ottawa. Released March 13, 2007.

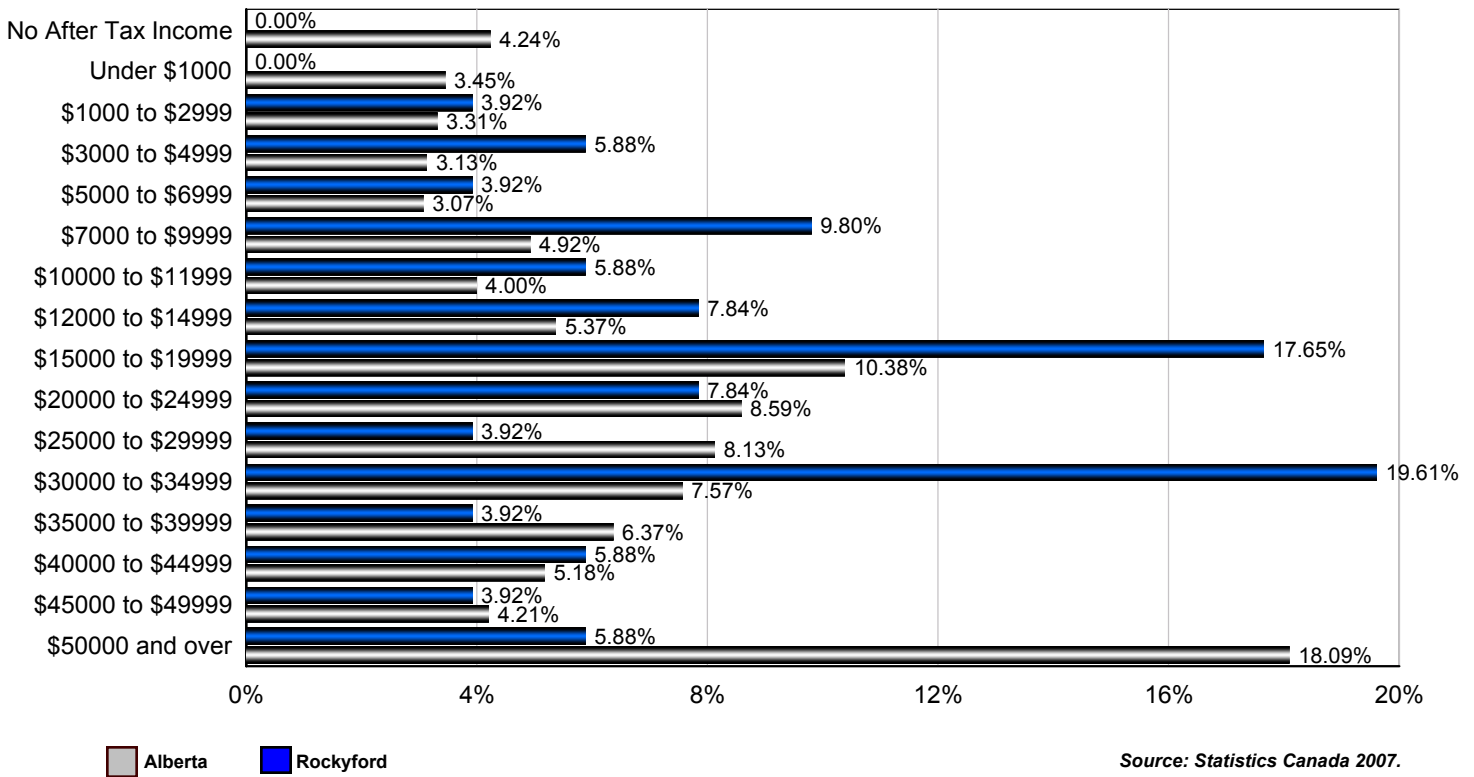
Occupation by Gender

Occupation	Males	Females	Total
Management Occupations	0	0	0
Business, Finance and Administration Occupations	0	25	25
Natural and Applied Sciences and Related Occupations	0	0	0
Health Occupations	0	0	0
Occupations in Social Science, Education, Government Service	0	10	10
Occupations in Art, Culture, Recreation and Sport	0	0	0
Sales and Service Occupations	15	40	55
Trades, Transport and Equipment Operators and Related Occupations	70	0	70
Occupations Unique to Primary	10	0	10
Occupations Unique to Processing, Manufacturing and Utilities	0	0	0
Total	95	75	170

Source: Statistics Canada 2007.
Rockyford, Alberta. 2006 Community Profiles. 2006 Census.
Statistics Canada Catalogue no. 92-591-XWE. Ottawa. Released March 13, 2007.

Income

Percent of Population 15+ by Income Bracket - Rockyford vs Alberta (2005)



Source: Statistics Canada 2007.
 Rockyford, Alberta. 2006 Community Profiles. 2006 Census.
 Statistics Canada Catalogue no. 92-591-XWE. Ottawa. Released March 13, 2007.

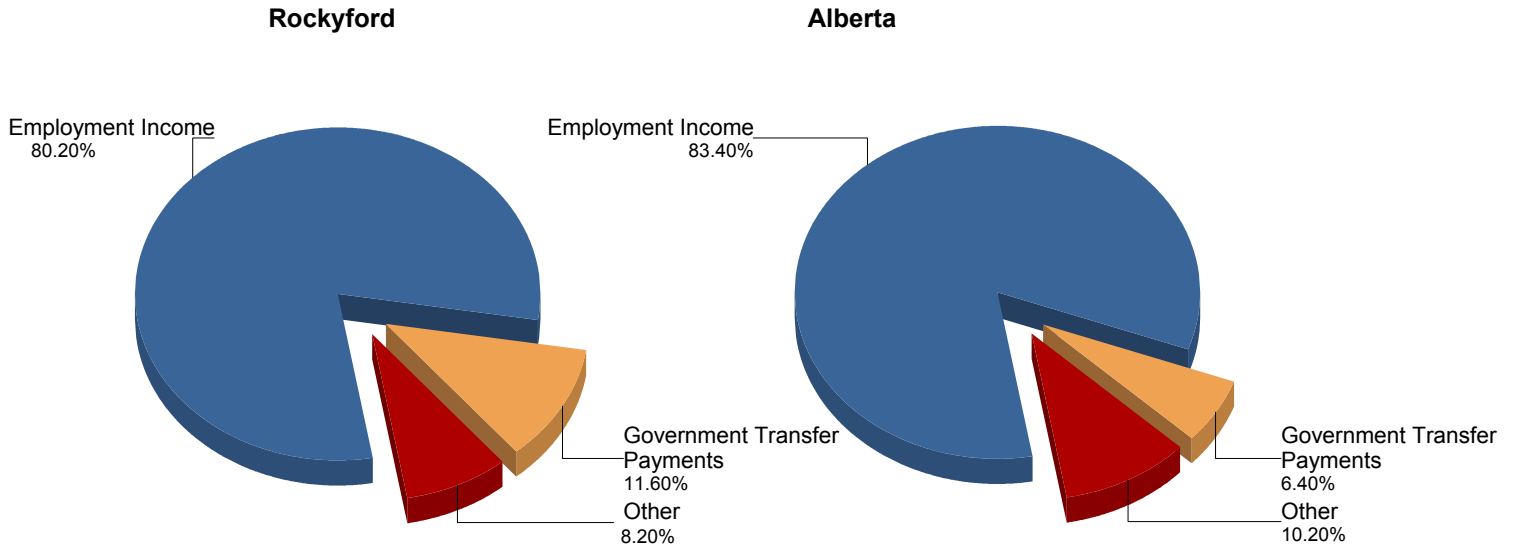
Population 15+ by Total After Tax Income - Rockyford (2005)

	Males	Females	Total
Without After-Tax Income	0	0	0
Under \$1,000	0	0	0
\$1,000 to \$2,999	0	0	0
\$3,000 to \$4,999	0	10	10
\$5,000 to \$6,999	0	10	10
\$7,000 to \$9,999	0	20	20
\$10,000 to \$11,999	0	15	15
\$12,000 to \$14,999	10	15	25
\$15,000 to \$19,999	0	45	45
\$20,000 to \$24,999	20	0	20
\$25,000 to \$29,999	10	0	10
\$30,000 to \$34,999	40	15	55
\$35,000 to \$39,999	10	0	10
\$40,000 to \$44,999	10	0	10
\$45,000 to \$49,999	0	0	0
\$50,000 and over	15	0	15
Total	125	130	255

Due to rounding consolidating the shown income brackets may lead to errors. Such errors would be most pronounced for small communities.

Source: Statistics Canada 2007.
 Rockyford, Alberta. 2006 Community Profiles. 2006 Census.
 Statistics Canada Catalogue no. 92-591-XWE. Ottawa. Released March 13, 2007.

Composition of Family Income for Economic Families - Rockyford vs Alberta (2005)



Economic family total income - The total income of an economic family is the sum of the total incomes of all members of that family.

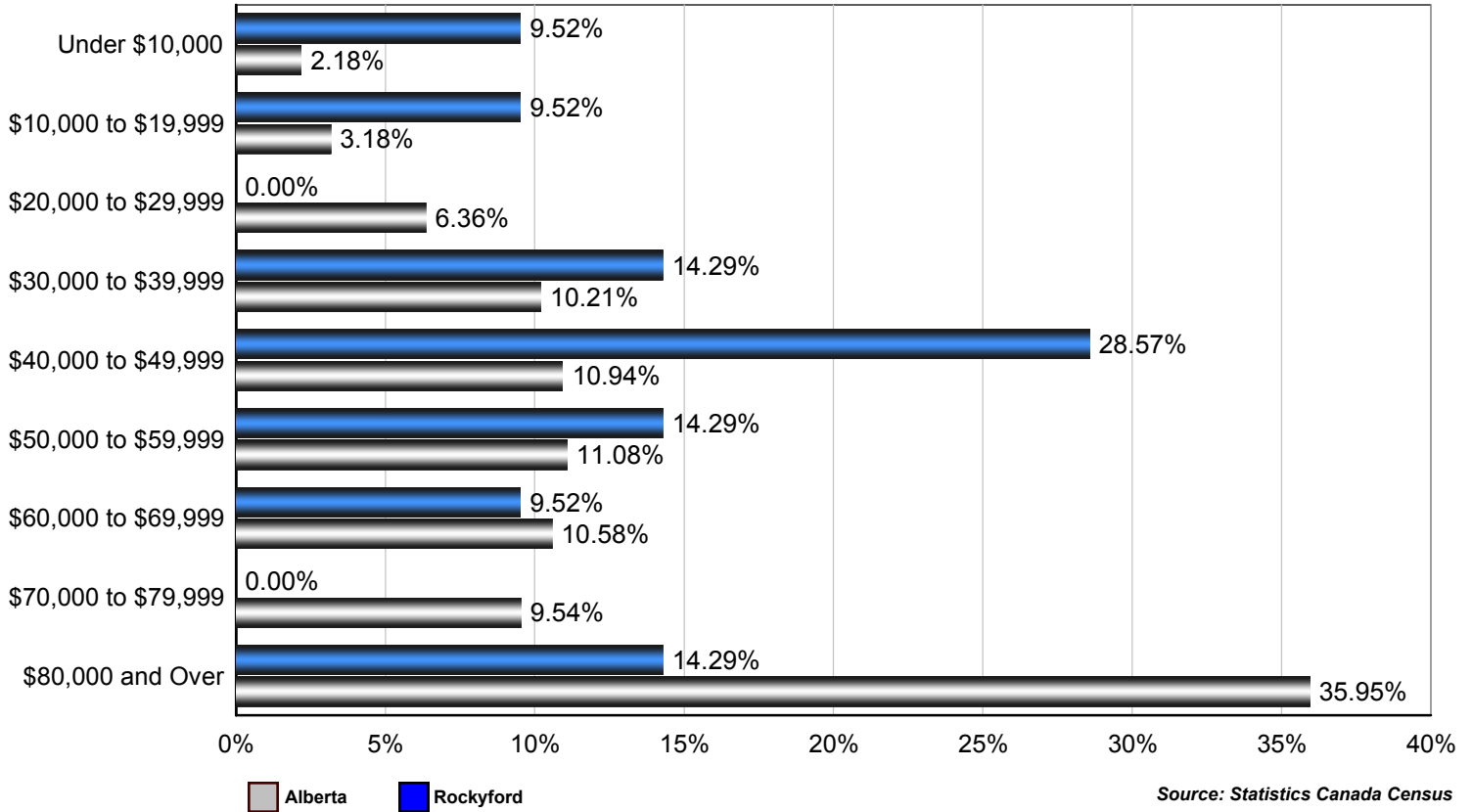
Source: Statistics Canada 2007.
Rockyford, Alberta. 2006 Community Profiles. 2006 Census.
Statistics Canada Catalogue no. 92-591-XWE. Ottawa. Released March 13, 2007.

Population 15+ With Employment Earnings - Rockyford (2005)

	Males	Females	Total
Earnings - As a % of total Earnings	92%	81%	90%
Median Employment Earnings	\$35,065	\$7,611	\$16,369
Average Employment Earnings	\$37,830	\$11,004	\$24,574

Source: Statistics Canada 2007.
Rockyford, Alberta. 2006 Community Profiles. 2006 Census.
Statistics Canada Catalogue no. 92-591-XWE. Ottawa. Released March 13, 2007.

Percent of Total Economic Families by After-tax Income Brackets - Rockyford vs Alberta (2005)



Number of Economic Families by After-tax Income Brackets - Rockyford (2005)

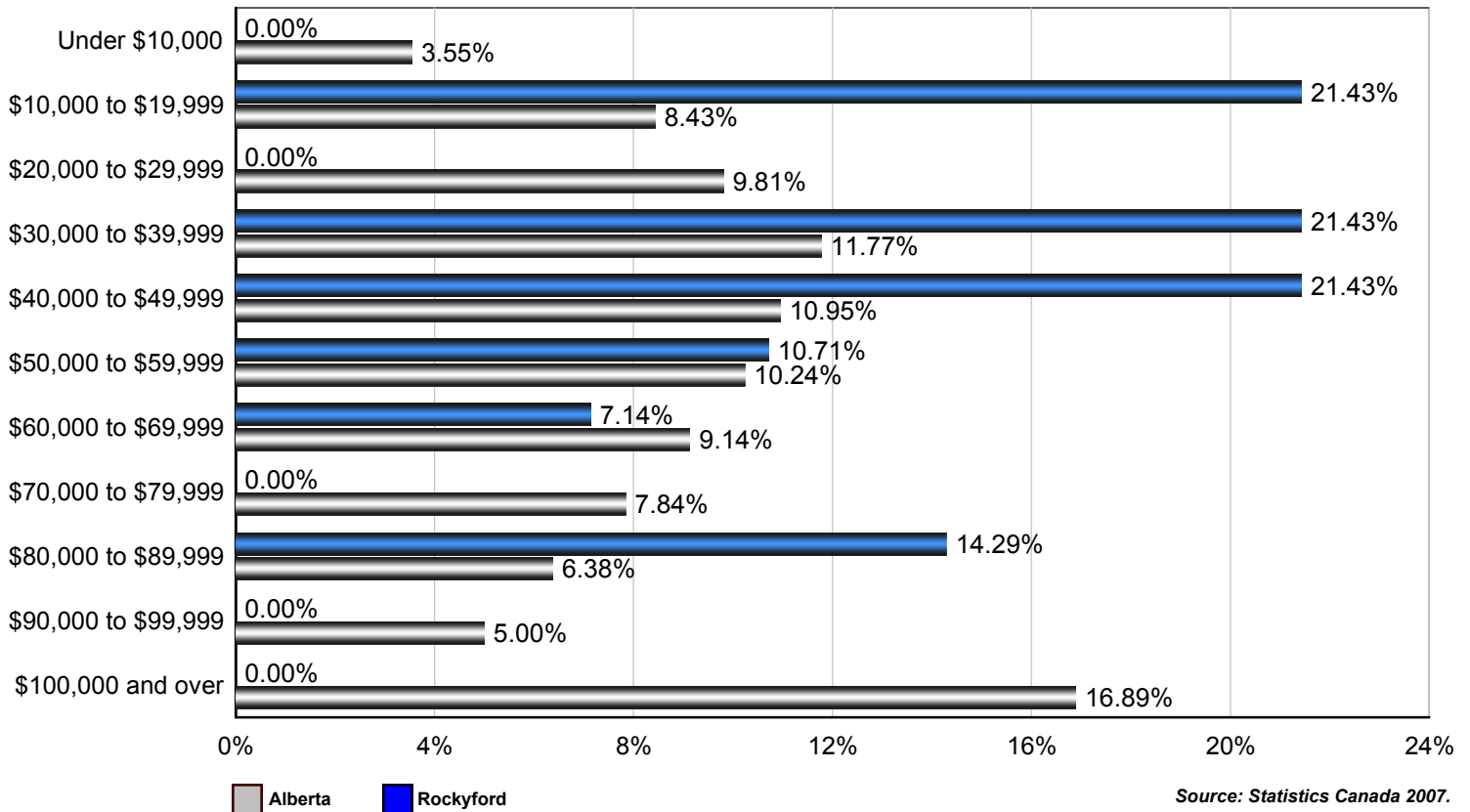
Income Bracket	Number of Families
Under \$10,000	10
\$10,000 to \$19,999	10
\$20,000 to \$29,999	0
\$30,000 to \$39,999	15
\$40,000 to \$49,999	30
\$50,000 to \$59,999	15
\$60,000 to \$69,999	10
\$70,000 to \$79,999	0
\$80,000 and over	15
Total	105

Family Income	
Median After-Tax Family Income	\$46,261
Average After-Tax Family Income	\$49,262

Due to rounding consolidating the shown income brackets may lead to errors. Such errors would be most pronounced for small communities.

Source: Statistics Canada 2007.
Rockyford, Alberta. 2006 Community Profiles. 2006 Census.
Statistics Canada Catalogue no. 92-591-XWE. Ottawa. Released March 13, 2007.

Percent of Total Private Households by After-tax Income Brackets - Rockyford vs Alberta (2005)



Source: Statistics Canada 2007.
Rockyford, Alberta. 2006 Community Profiles. 2006 Census.
Statistics Canada Catalogue no. 92-591-XWE. Ottawa. Released March 13, 2007.

Number of Private Households by After-tax Income Brackets - Rockyford (2005)

Income Bracket	Number of Families
Under \$10,000	0
\$10,000 to \$19,999	30
\$20,000 to \$29,999	0
\$30,000 to \$39,999	30
\$40,000 to \$49,999	30
\$50,000 to \$59,999	15
\$60,000 to \$69,999	10
\$70,000 to \$79,999	0
\$80,000 to \$89,999	20
\$90,000 to \$99,999	0
\$100,000 and Over	0
Total	140

Family Income	
Median After-Tax Family Income	\$42,420
Average After-Tax Family Income	\$45,837

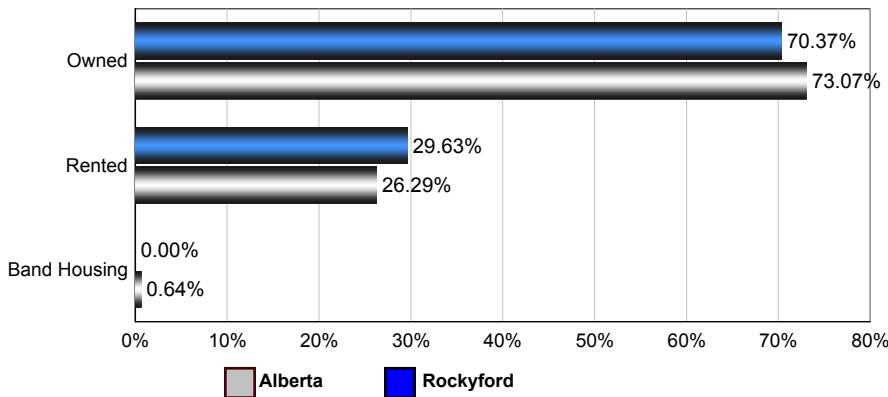
Due to rounding consolidating the shown income brackets may lead to errors. Such errors would be most pronounced for small communities.

Source: Statistics Canada Census

Dwellings

Number of Occupied Private Dwellings by Ownership - Rockyford

Rockyford vs Alberta (2006)



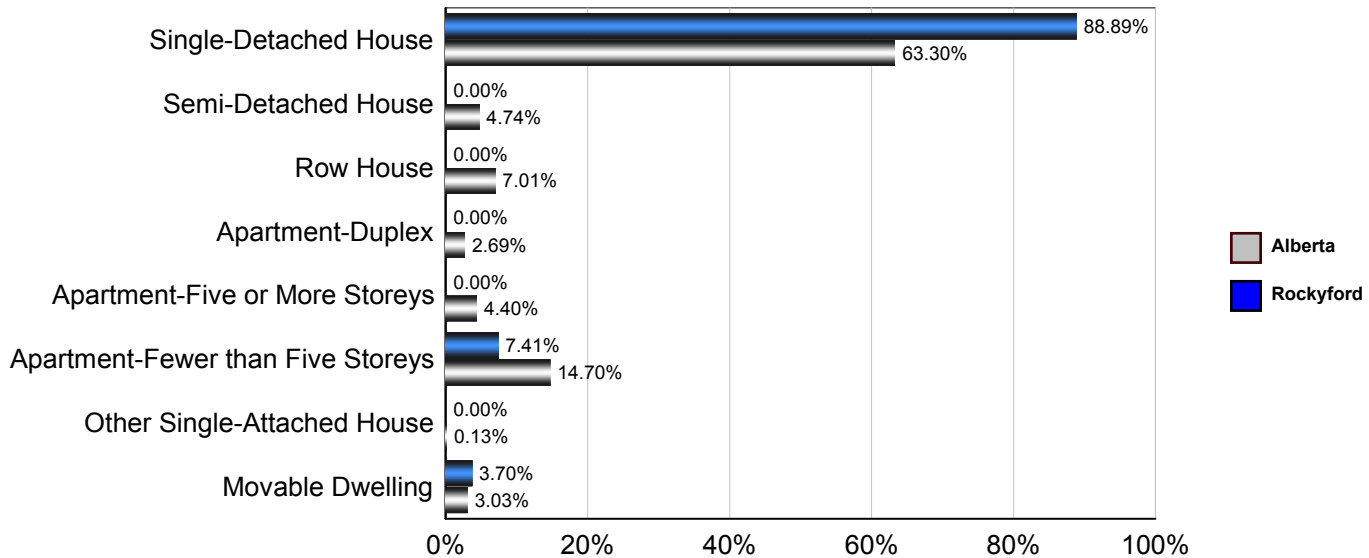
Rockyford

	1996	2001	2006
Owned	120	130	95
Rented	10	10	40
Band Housing	0	0	0
Total	130	140	135

Source: Statistics Canada 2007.
Rockyford, Alberta. 2006 Community Profiles. 2006 Census.
Statistics Canada Catalogue no. 92-591-XWE. Ottawa. Released March 13, 2007.

Number of Occupied Private Dwellings by Structural Type - Rockyford

Rockyford vs Alberta (2006)



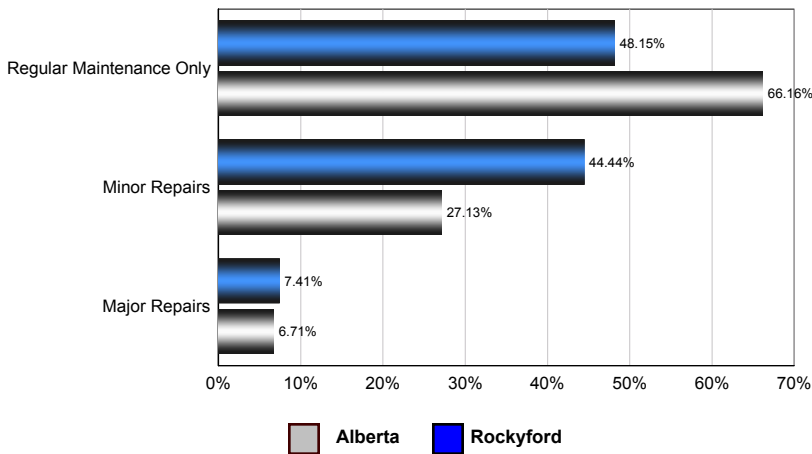
Rockyford

	1996	2001	2006
Single-Detached House	125	125	120
Semi-Detached House	0	0	0
Row House	0	0	0
Apartment - Duplex	0	0	0
Apartment - Five or More Storeys	0	0	0
Apartment - Fewer than Five Storeys	0	15	10
Other Single-Attached House	0	0	0
Movable Dwelling	0	0	5
Total	125	140	135

Source: Statistics Canada 2007.
Rockyford, Alberta. 2006 Community Profiles. 2006 Census.
Statistics Canada Catalogue no. 92-591-XWE. Ottawa. Released March 13, 2007.

Number of Occupied Private Dwellings by the Condition of Dwelling - Rockyford

Rockyford vs Alberta (2006)



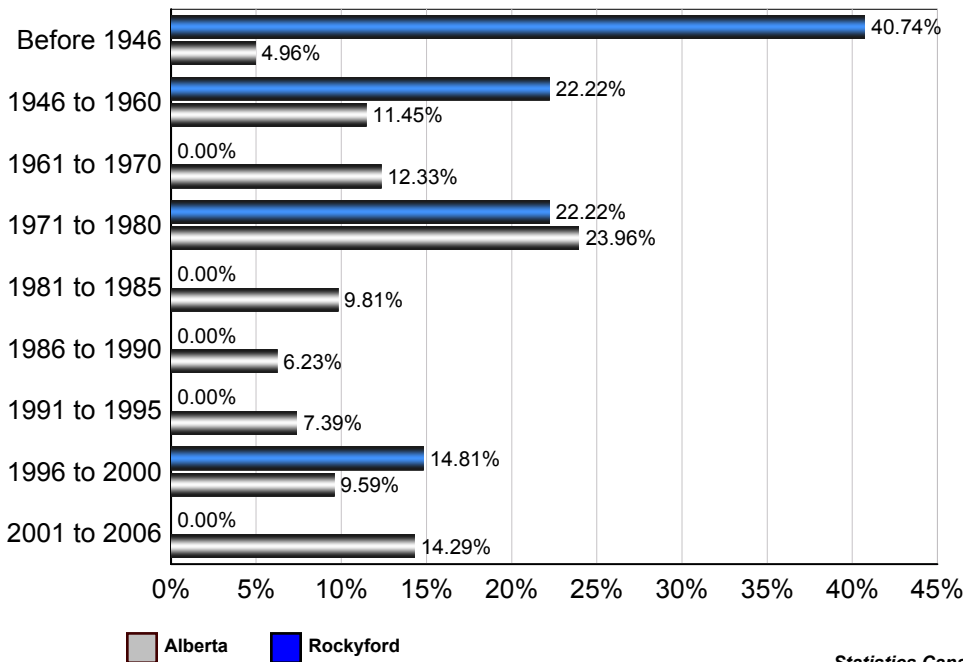
Rockyford

	1996	2001	2006
Regular Maintenance Only	65	55	65
Minor repairs	65	55	60
Major repairs	0	25	10
Total	130	135	135

Source: Statistics Canada 2007.
Rockyford, Alberta. 2006 Community Profiles. 2006 Census.
Statistics Canada Catalogue no. 92-591-XWE. Ottawa. Released March 13, 2007.

Number of Occupied Private Dwellings by Period of Construction - Rockyford

Rockyford vs Alberta (2006)



Rockyford

	2006
Before 1946	55
1946 to 1960	30
1961 to 1970	0
1971 to 1980	30
1981 to 1985	0
1986 to 1990	0
1991 to 1995	0
1996 to 2000	20
2001 to 2006	0
Total	135

Source: Statistics Canada 2007.
Rockyford, Alberta. 2006 Community Profiles. 2006 Census.
Statistics Canada Catalogue no. 92-591-XWE. Ottawa. Released March 13, 2007.

