

# Stirling

## Google Map



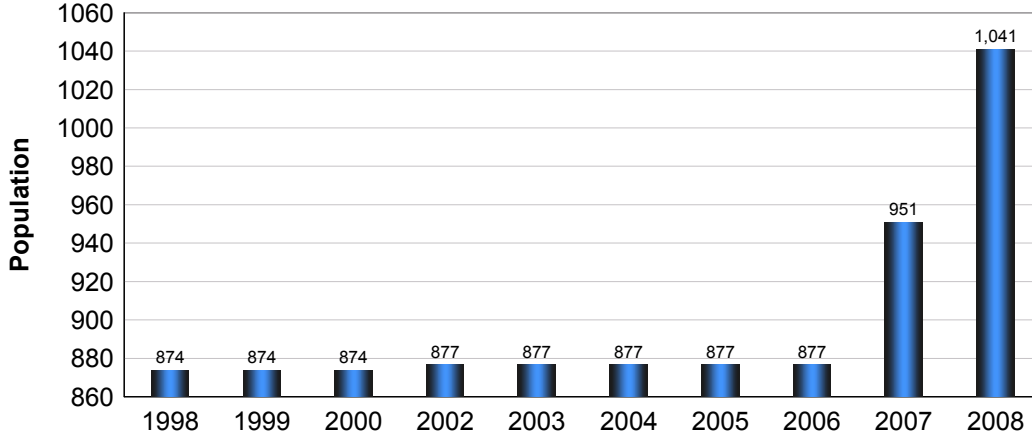
Disclaimer: Information in this profile has been provided from a variety of external sources. AlbertaFirst.com Ltd. provides this template, and each community posts their own content within the template. If you find inaccuracies or information you feel needs changing, please contact the community directly. Although every effort has been made to ensure the accuracy, currency and reliability of the content and data, AlbertaFirst.com Ltd. accepts no responsibility in this regard.

©AlbertaFirst.com Ltd., 2010.

A chart or table in this Profile may be blank. This will occur if there was no data available for that community for the specified time period

## Municipal Population

### Total Population - Stirling

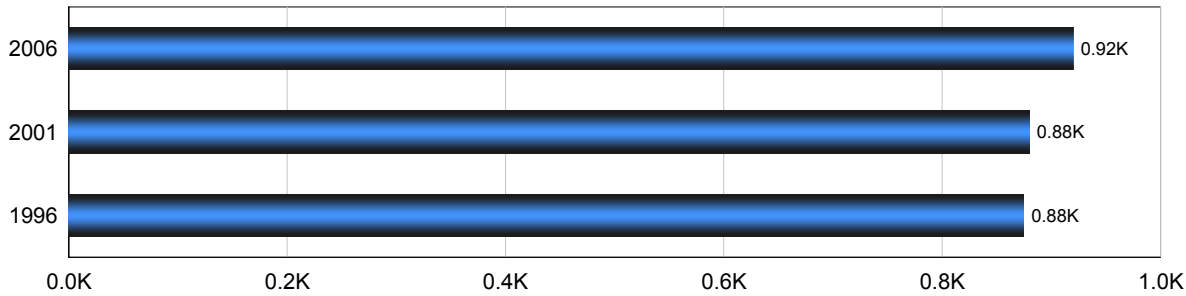


Year	Community Growth	Alberta Growth
2008	9.46%	2.37%
2007	8.44%	3.39%
2006	0.00%	1.95%
2005	0.00%	3.91%
2004	0.00%	0.95%
2003	0.00%	1.34%
2001	0.34%	4.02%
2000	0.00%	2.15%
1999	0.00%	3.24%
1998	0.00%	1.33%

Source: Statistics Canada 2007.  
Stirling, Alberta. 2006 Community Profiles. 2006 Census.  
Statistics Canada Catalogue no. 92-591-XWE. Ottawa. Released March 13, 2007.

## Population

### Total Population - Stirling

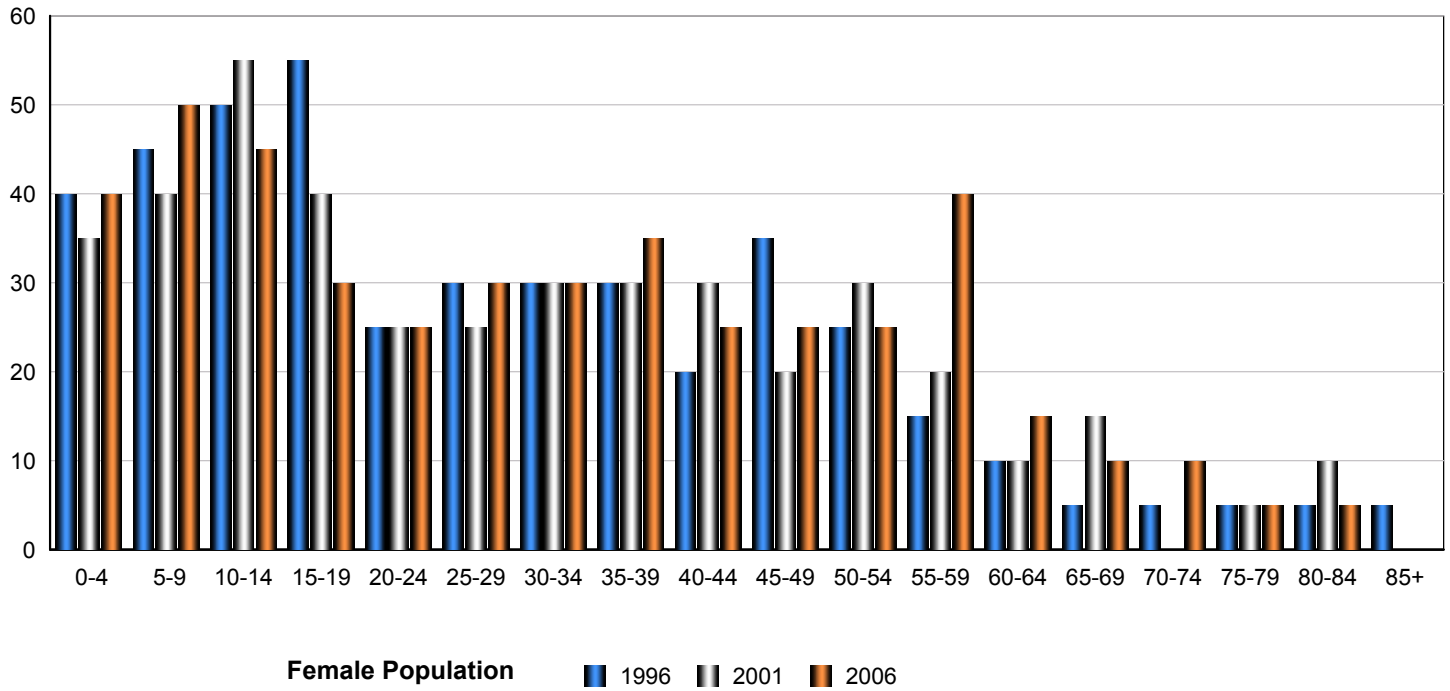


Census Year	Total Population	% Change
2006	920	5.00%
2001	880	0.30%
1996	875	9.40%

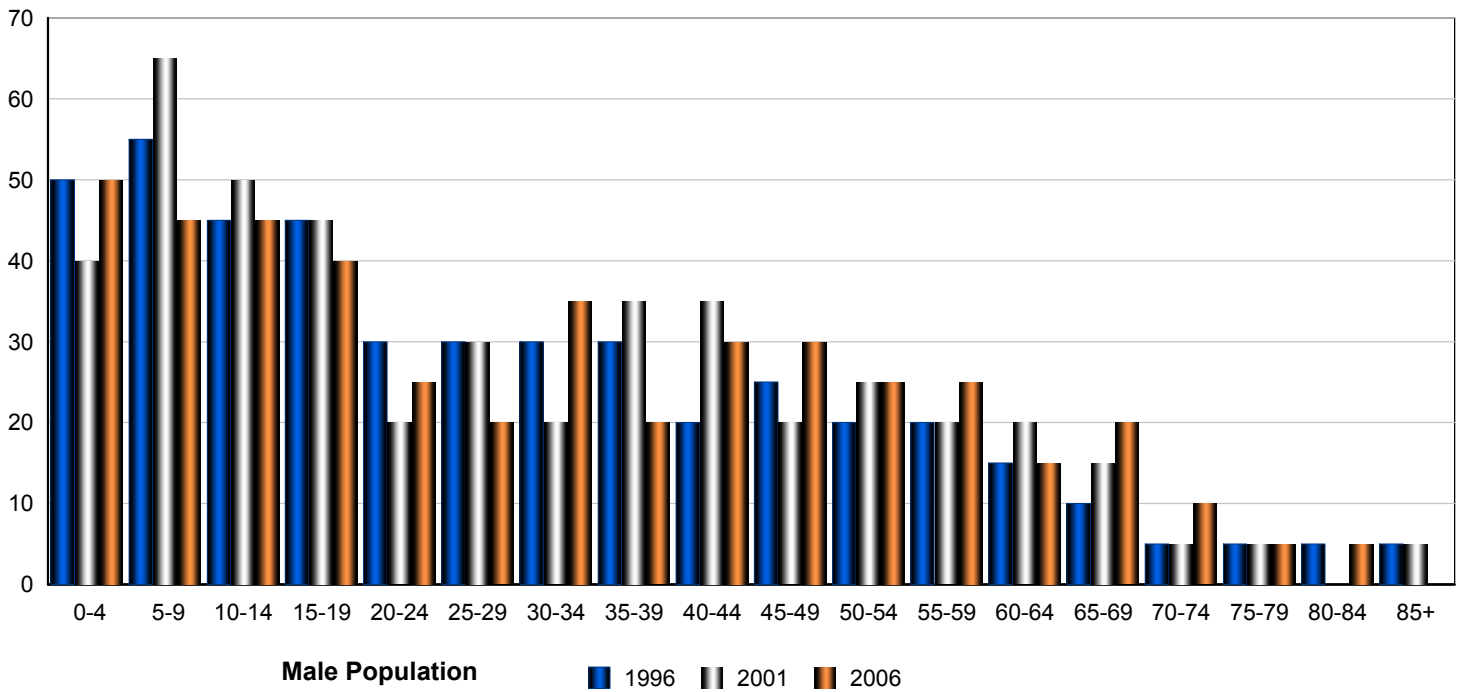
Source: Statistics Canada 2007.  
Stirling, Alberta. 2006 Community Profiles. 2006 Census.  
Statistics Canada Catalogue no. 92-591-XWE. Ottawa. Released March 13, 2007.

## Total Population by Gender and Age - Stirling

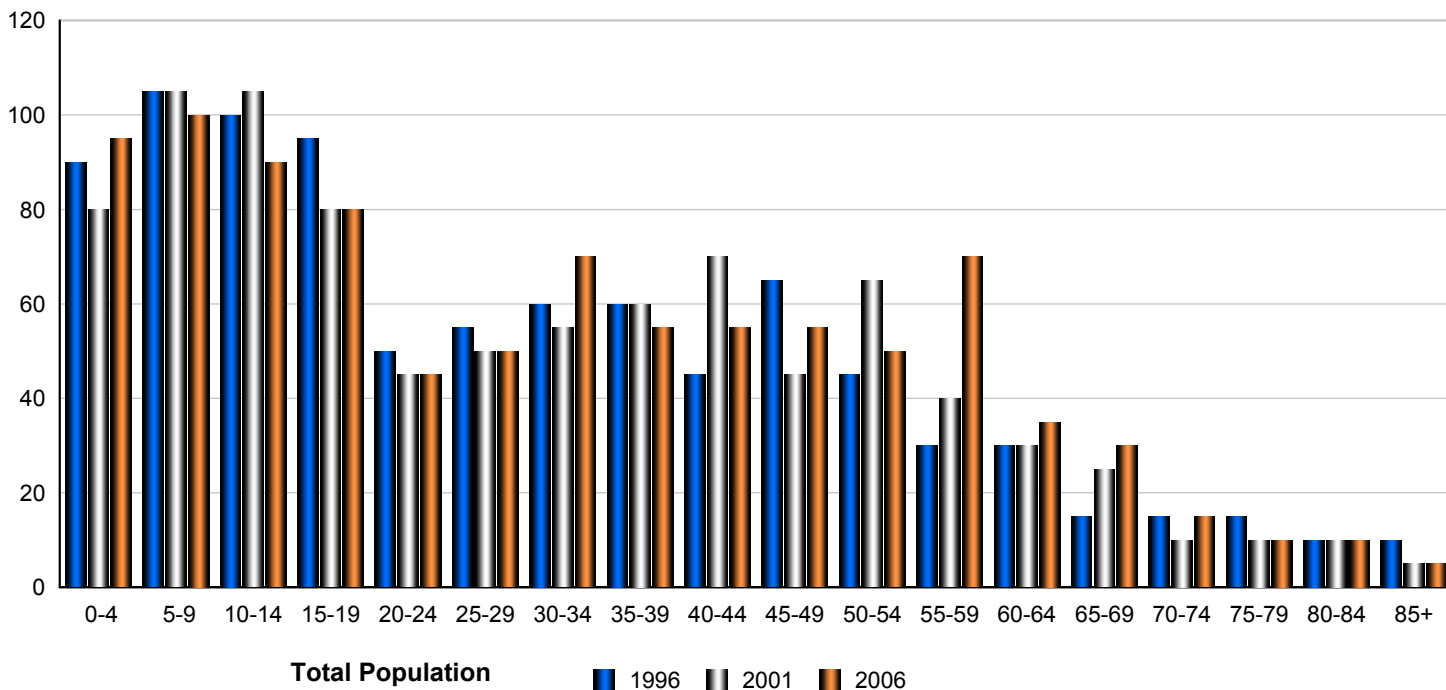
### Census Population by Gender - Stirling



### Census Population by Gender - Stirling



## Census Population by Gender - Stirling



	Male			Female			Total		
	2006	2001	1996	2006	2001	1996	2006	2001	1996
0-4	50	40	50	40	35	40	90	75	90
5-9	45	65	55	50	40	45	95	105	100
10-14	45	50	45	45	55	50	90	105	95
15-19	40	45	45	30	40	55	70	85	100
20-24	25	20	30	25	25	25	50	45	55
25-29	20	30	30	30	25	30	50	55	60
30-34	35	20	30	30	30	30	65	50	60
35-39	20	35	30	35	30	30	55	65	60
40-44	30	35	20	25	30	20	55	65	40
45-49	30	20	25	25	20	35	55	40	60
50-54	25	25	20	25	30	25	50	55	45
55-59	25	20	20	40	20	15	65	40	35
60-64	15	20	15	15	10	10	30	30	25
65-69	20	15	10	10	15	5	30	30	15
70-74	10	5	5	10	0	5	20	5	10
75-79	5	5	5	5	5	5	10	10	10
80-84	5	0	5	5	10	5	10	10	10
85-89	0	5	5	0	0	5	0	5	10
<b>Total</b>	<b>445</b>	<b>455</b>	<b>445</b>	<b>445</b>	<b>420</b>	<b>435</b>	<b>890</b>	<b>875</b>	<b>880</b>

Source: Statistics Canada 2007.  
 Stirling, Alberta. 2006 Community Profiles. 2006 Census.  
 Statistics Canada Catalogue no. 92-591-XWE. Ottawa. Released March 13, 2007.

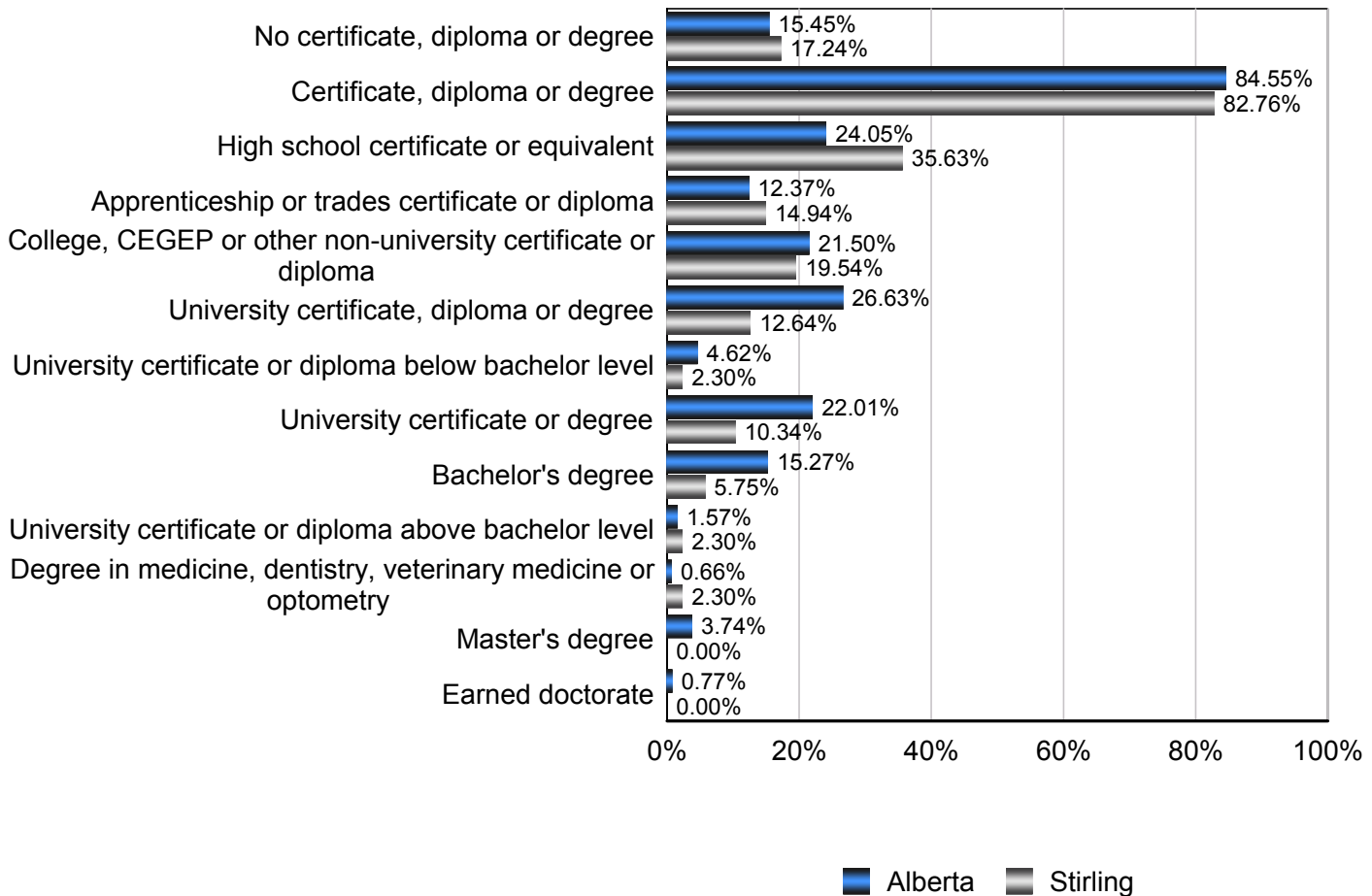
## Education Statistics

### Highest Level of Schooling, Population Aged 25-64 - Stirling (2006)

% of Population Aged 25-64

Highest Level of Schooling	Stirling	Alberta
No certificate, diploma or degree	17.24%	15.45%
Certificate, diploma or degree	82.76%	84.55%
High school certificate or equivalent	35.63%	24.05%
Apprenticeship or trades certificate or diploma	14.94%	12.37%
College, CEGEP or other non-university certificate or diploma	19.54%	21.50%
University certificate, diploma or degree	12.64%	26.63%
University certificate or diploma below bachelor level	2.30%	4.62%
University certificate or degree	10.34%	22.01%
Bachelor's degree	5.75%	15.27%
University certificate or diploma above bachelor level	2.30%	1.57%
Degree in medicine, dentistry, veterinary medicine or optometry	2.30%	0.66%
Master's degree	0.00%	3.74%
Earned doctorate	0.00%	0.77%

### Amount by Which the Highest Level of Schooling - Stirling vs Provincial Average (2006)

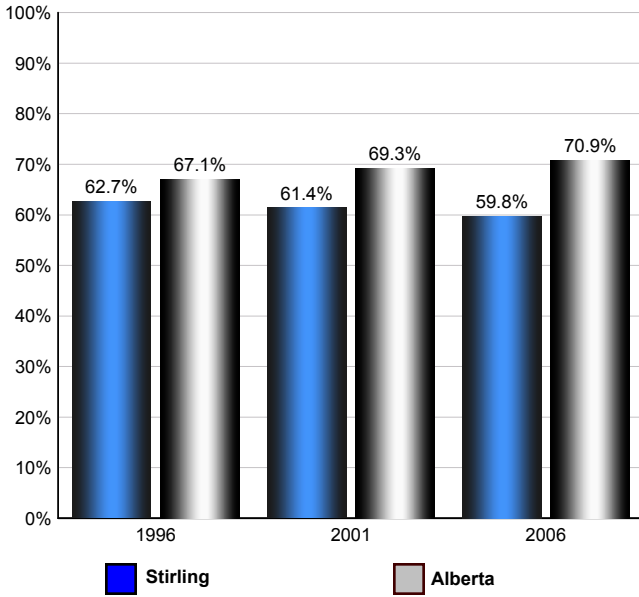


Source: Statistics Canada 2007.  
 Alberta, Alberta. 2006 Community Profiles. 2006 Census.  
 Statistics Canada Catalogue no. 92-591-XWE. Ottawa. Released March 13, 2007.

## Labour Force

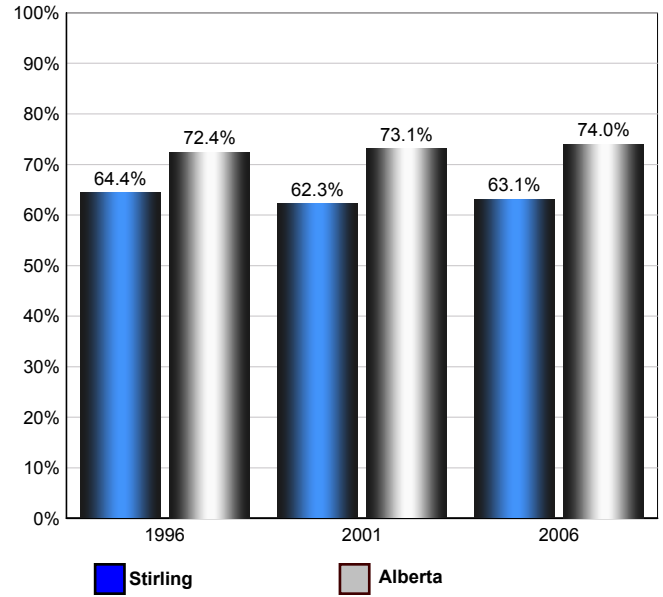
### Annual Labour Force Activity Rates - Stirling vs Alberta

#### Employment Rate



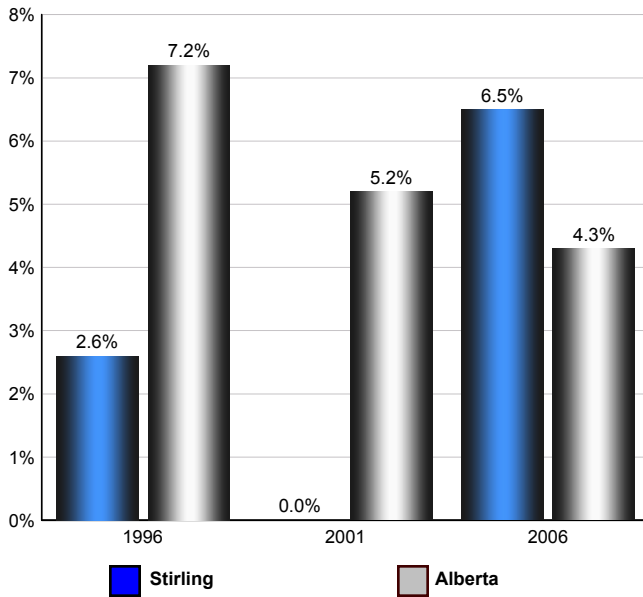
The Employment Rate is calculated by dividing the total employed by the total population 15 and over

#### Participation Rate



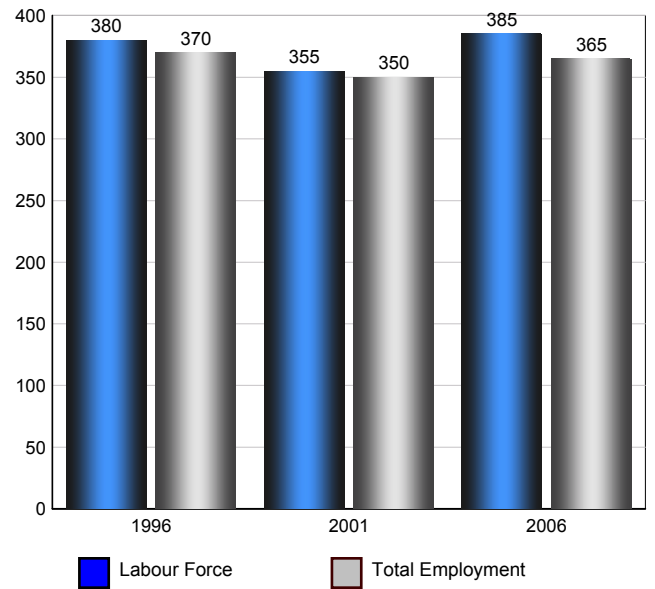
The Participation rate is calculated by summing together the number employed and unemployed and dividing the result by the total population aged 15 and over

#### Unemployment Rate



The Unemployment rate is calculated by dividing the total number of persons in the labour force that are reported as being unemployed by the total labour force.

#### Stirling Labour Force and Total Employment (Age 15+)



Source: Statistics Canada 2007. Stirling, Alberta. 2006 Community Profiles. 2006 Census. Statistics Canada Catalogue no. 92-591-XWE. Ottawa. Released March 13, 2007.

## Labour Force Age 15+ - Stirling (2006)

### Industry by Gender

Industry	Males	Females	Total
Agriculture, Forestry, Fishing and Hunting	25	10	35
Mining, Oil and Gas Extraction	15	0	15
Utilities	10	0	10
Construction	30	0	30
Manufacturing	15	0	15
Wholesale Trade	10	0	10
Retail Trade	0	30	30
Transportation and Warehousing	35	15	50
Information and Cultural Industries	0	10	10
Finance and Insurance	0	0	0
Real Estate, Rental and Leasing	0	0	0
Professional, Scientific and Technical Services	10	30	40
Management of Companies and Enterprises	0	0	0
Administrative and Support, Waste Management and Remediation Services	0	25	25
Educational services	20	25	45
Health care and social assistance	20	30	50
Arts, Entertainment and Recreation	0	0	0
Accommodation and Food Services	0	0	0
Other Services (except Public Administration)	0	10	10
Public Administration	10	0	10
<b>Total</b>	<b>200</b>	<b>185</b>	<b>385</b>

Source: Statistics Canada 2007.  
Stirling, Alberta. 2006 Community Profiles. 2006 Census.  
Statistics Canada Catalogue no. 92-591-XWE. Ottawa. Released March 13, 2007.

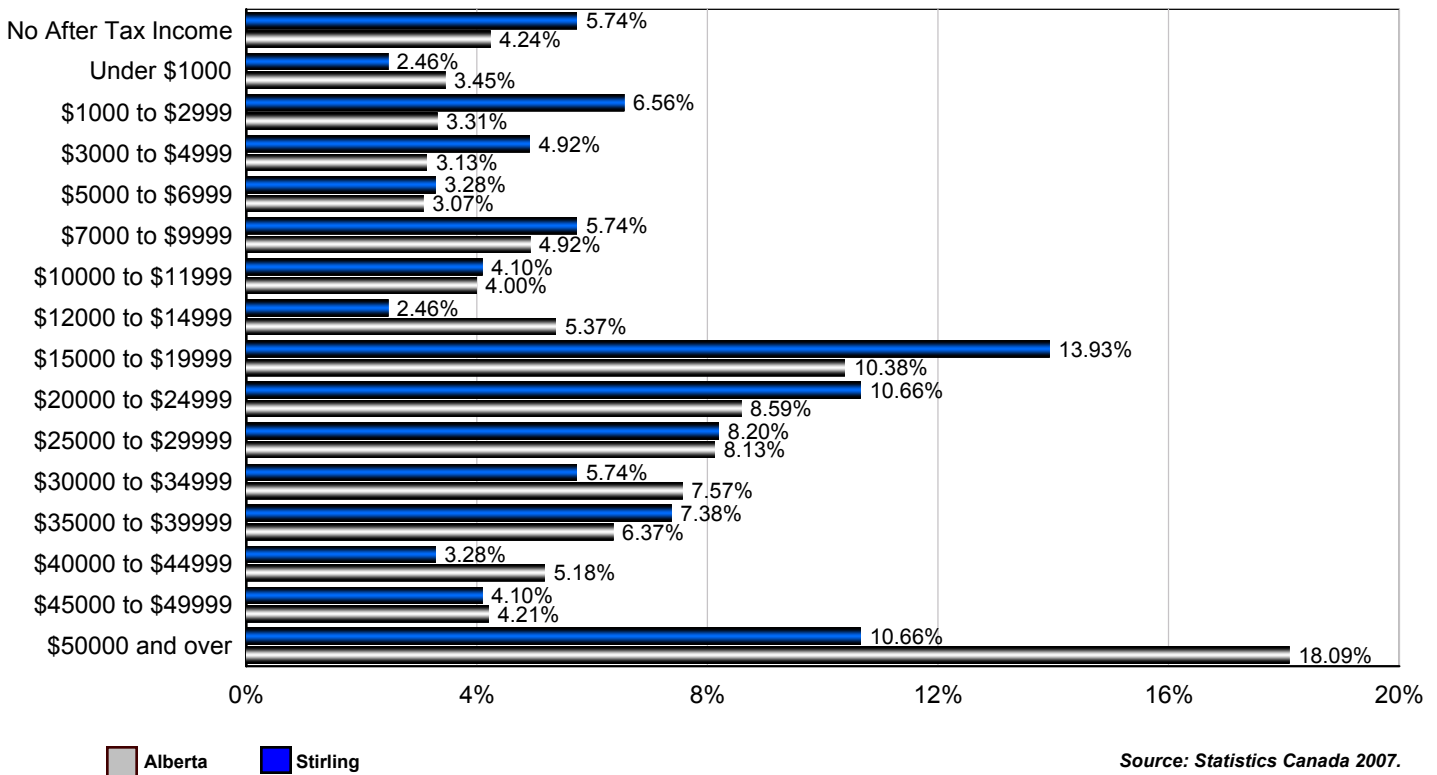
### Occupation by Gender

Occupation	Males	Females	Total
Management Occupations	0	0	0
Business, Finance and Administration Occupations	10	60	70
Natural and Applied Sciences and Related Occupations	10	0	10
Health Occupations	15	15	30
Occupations in Social Science, Education, Government Service	20	25	45
Occupations in Art, Culture, Recreation and Sport	10	0	10
Sales and Service Occupations	10	70	80
Trades, Transport and Equipment Operators and Related Occupations	95	10	105
Occupations Unique to Primary	25	0	25
Occupations Unique to Processing, Manufacturing and Utilities	10	0	10
<b>Total</b>	<b>205</b>	<b>180</b>	<b>385</b>

Source: Statistics Canada 2007.  
Stirling, Alberta. 2006 Community Profiles. 2006 Census.  
Statistics Canada Catalogue no. 92-591-XWE. Ottawa. Released March 13, 2007.

## Income

### Percent of Population 15+ by Income Bracket - Stirling vs Alberta (2005)



Source: Statistics Canada 2007.  
 Stirling, Alberta. 2006 Community Profiles. 2006 Census.  
 Statistics Canada Catalogue no. 92-591-XWE. Ottawa. Released March 13, 2007.

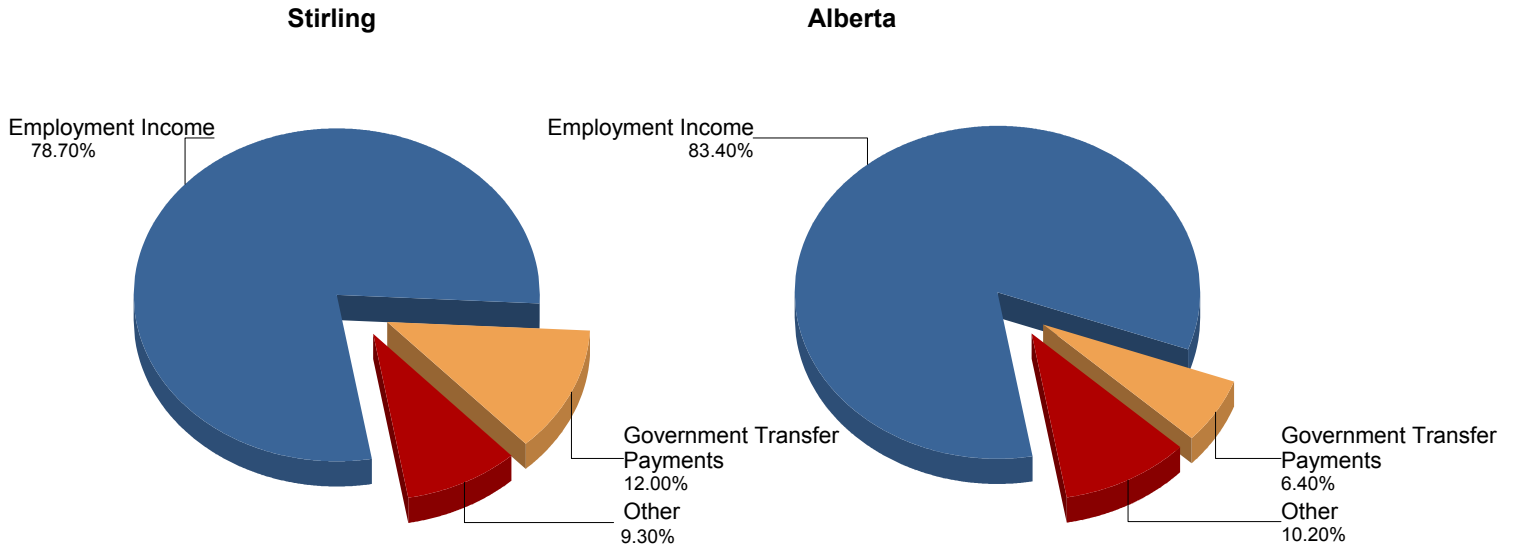
### Population 15+ by Total After Tax Income - Stirling (2005)

	Males	Females	Total
Without After-Tax Income	0	30	30
Under \$1,000	10	10	20
\$1,000 to \$2,999	15	20	35
\$3,000 to \$4,999	10	20	30
\$5,000 to \$6,999	0	20	20
\$7,000 to \$9,999	0	35	35
\$10,000 to \$11,999	15	15	30
\$12,000 to \$14,999	0	10	10
\$15,000 to \$19,999	25	60	85
\$20,000 to \$24,999	20	40	60
\$25,000 to \$29,999	40	10	50
\$30,000 to \$34,999	20	10	30
\$35,000 to \$39,999	30	10	40
\$40,000 to \$44,999	15	10	25
\$45,000 to \$49,999	15	10	25
\$50,000 and over	60	10	70
<b>Total</b>	<b>285</b>	<b>330</b>	<b>610</b>

Due to rounding consolidating the shown income brackets may lead to errors. Such errors would be most pronounced for small communities.

Source: Statistics Canada 2007.  
 Stirling, Alberta. 2006 Community Profiles. 2006 Census.  
 Statistics Canada Catalogue no. 92-591-XWE. Ottawa. Released March 13, 2007.

## Composition of Family Income for Economic Families - Stirling vs Alberta (2005)



Economic family total income - The total income of an economic family is the sum of the total incomes of all members of that family.

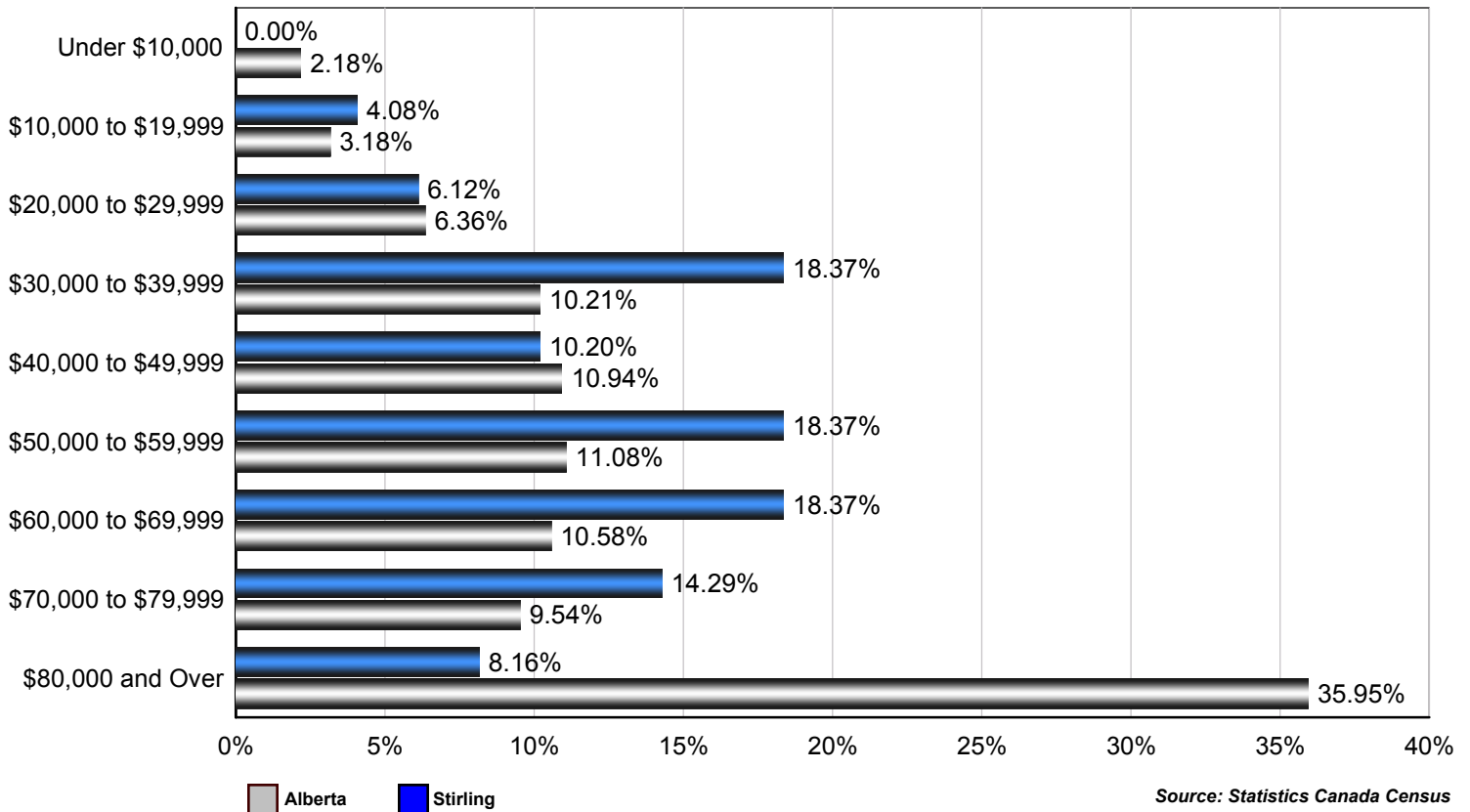
Source: Statistics Canada 2007.  
 Stirling, Alberta. 2006 Community Profiles. 2006 Census.  
 Statistics Canada Catalogue no. 92-591-XWE. Ottawa. Released March 13, 2007.

## Population 15+ With Employment Earnings - Stirling (2005)

	Males	Females	Total
Earnings - As a % of total Earnings	82%	68%	74%
Median Employment Earnings	\$33,350	\$16,926	\$20,608
Average Employment Earnings	\$38,668	\$20,486	\$29,789

Source: Statistics Canada 2007.  
 Stirling, Alberta. 2006 Community Profiles. 2006 Census.  
 Statistics Canada Catalogue no. 92-591-XWE. Ottawa. Released March 13, 2007.

## Percent of Total Economic Families by After-tax Income Brackets - Stirling vs Alberta (2005)



## Number of Economic Families by After-tax Income Brackets - Stirling (2005)

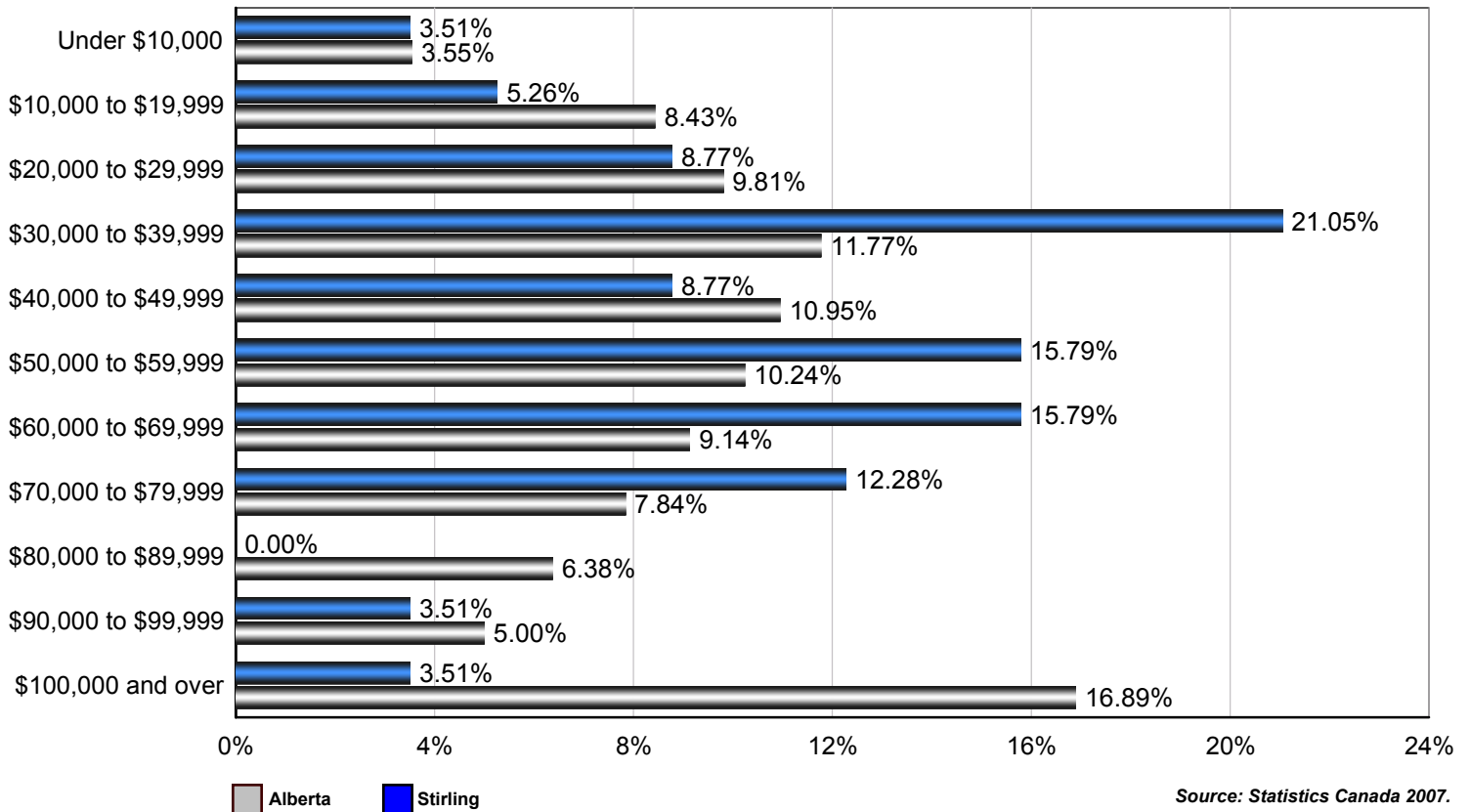
Income Bracket	Number of Families
Under \$10,000	0
\$10,000 to \$19,999	10
\$20,000 to \$29,999	15
\$30,000 to \$39,999	45
\$40,000 to \$49,999	25
\$50,000 to \$59,999	45
\$60,000 to \$69,999	45
\$70,000 to \$79,999	35
\$80,000 and over	20
<b>Total</b>	<b>245</b>

Family Income	
Median After-Tax Family Income	\$58,430
Average After-Tax Family Income	\$57,202

Due to rounding consolidating the shown income brackets may lead to errors. Such errors would be most pronounced for small communities.

Source: Statistics Canada 2007.  
 Stirling, Alberta. 2006 Community Profiles. 2006 Census.  
 Statistics Canada Catalogue no. 92-591-XWE. Ottawa. Released March 13, 2007.

## Percent of Total Private Households by After-tax Income Brackets - Stirling vs Alberta (2005)



Source: Statistics Canada 2007.  
Stirling, Alberta. 2006 Community Profiles. 2006 Census.  
Statistics Canada Catalogue no. 92-591-XWE. Ottawa. Released March 13, 2007.

## Number of Private Households by After-tax Income Brackets - Stirling (2005)

Income Bracket	Number of Families
Under \$10,000	10
\$10,000 to \$19,999	15
\$20,000 to \$29,999	25
\$30,000 to \$39,999	60
\$40,000 to \$49,999	25
\$50,000 to \$59,999	45
\$60,000 to \$69,999	45
\$70,000 to \$79,999	35
\$80,000 to \$89,999	0
\$90,000 to \$99,999	10
\$100,000 and Over	10
<b>Total</b>	<b>285</b>

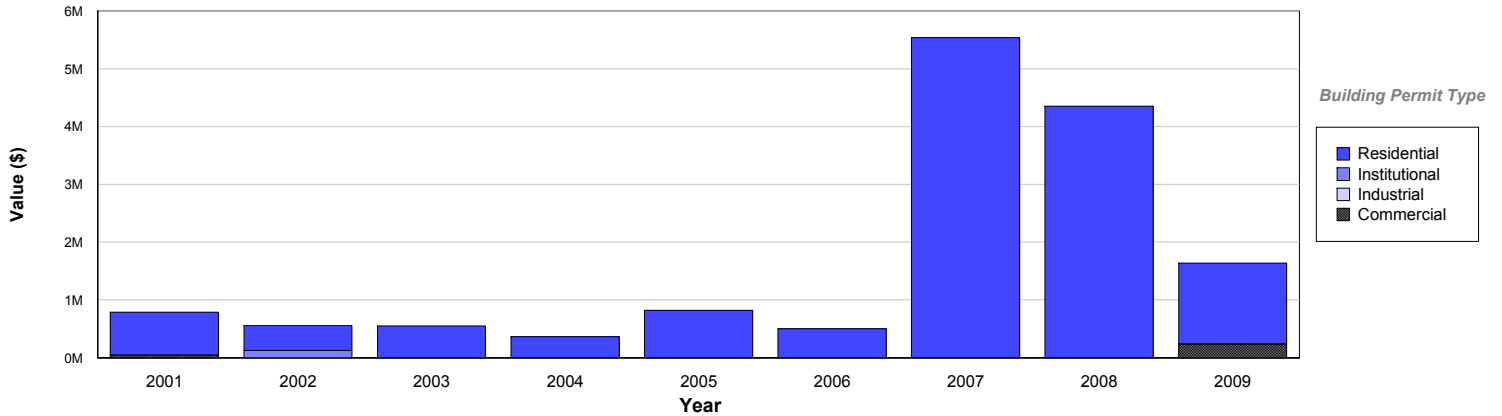
Family Income	
Median After-Tax Family Income	\$52,439
Average After-Tax Family Income	\$52,265

Due to rounding consolidating the shown income brackets may lead to errors. Such errors would be most pronounced for small communities.

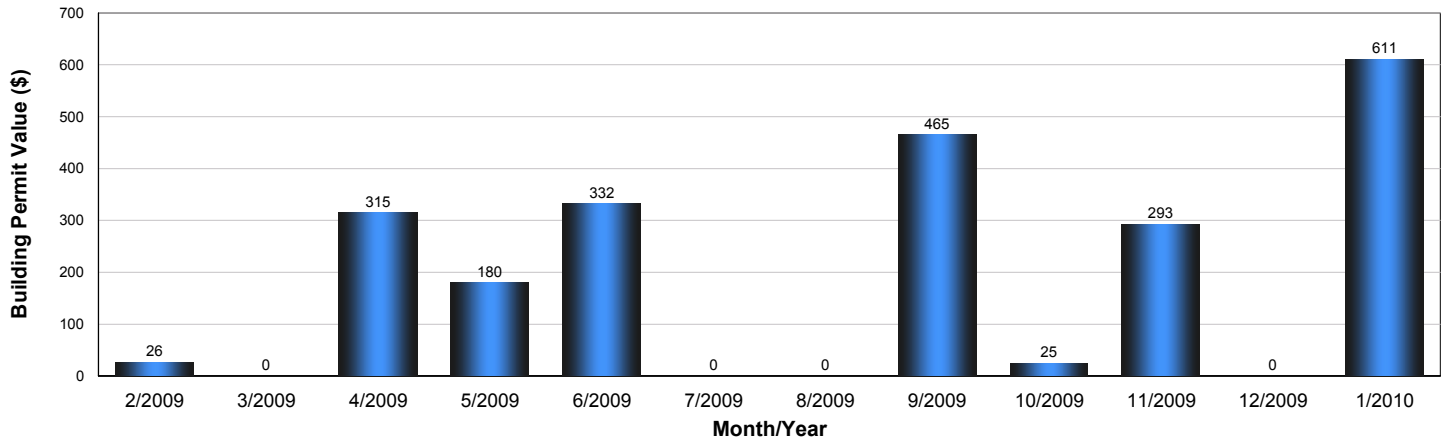
Source: Statistics Canada Census

## Building Permits

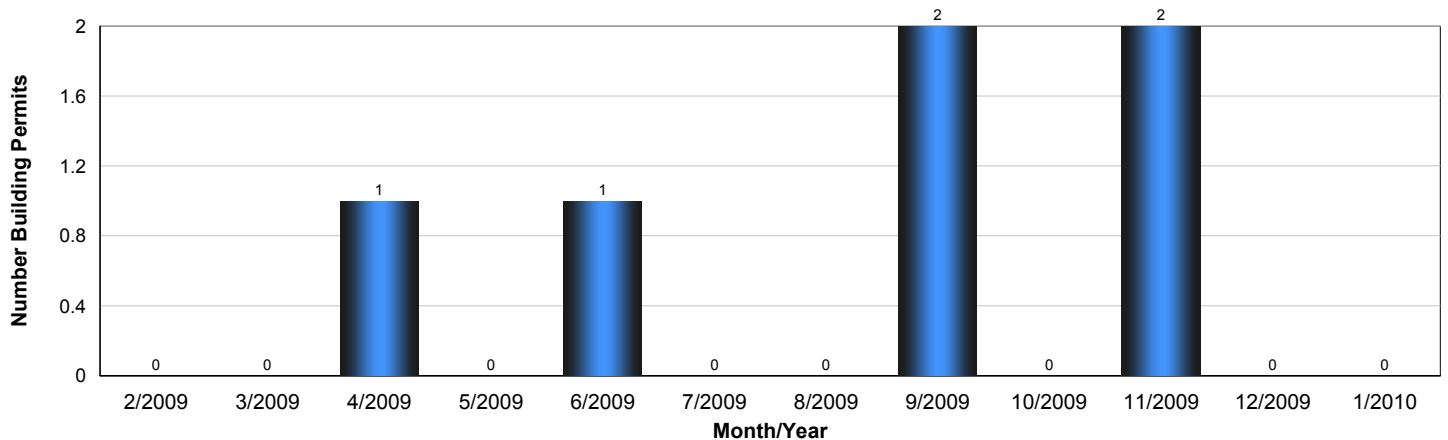
### Value of Building Permits - Stirling



Year	Residential	Industrial	Commercial	Institutional	Total
2009	\$1,393,000	\$10,000	\$233,000	\$0	\$1,636,000
2008	\$4,351,000	\$0	\$0	\$0	\$4,351,000
2007	\$5,538,000	\$0	\$0	\$0	\$5,538,000
2006	\$500,000	\$0	\$0	\$0	\$500,000
2005	\$823,000	\$0	\$0	\$0	\$823,000
2004	\$365,000	\$0	\$0	\$0	\$365,000
2003	\$550,000	\$0	\$0	\$0	\$550,000
2002	\$434,000	\$0	\$0	\$123,000	\$557,000
2001	\$740,000	\$0	\$50,000	\$0	\$790,000



### Number of Building Permits - Stirling

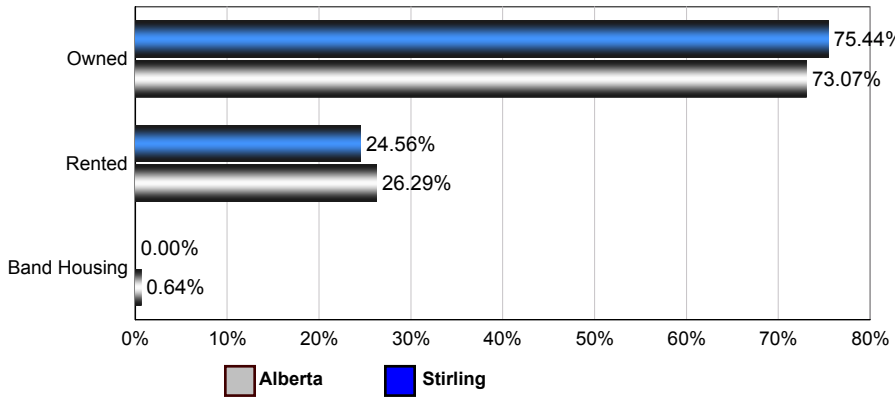


Source: Statistics Canada, Building Permits / Permis de bâtir, Publication 64-001-XWF, 2000 - 2009.

## Dwellings

### Number of Occupied Private Dwellings by Ownership - Stirling

#### Stirling vs Alberta (2006)



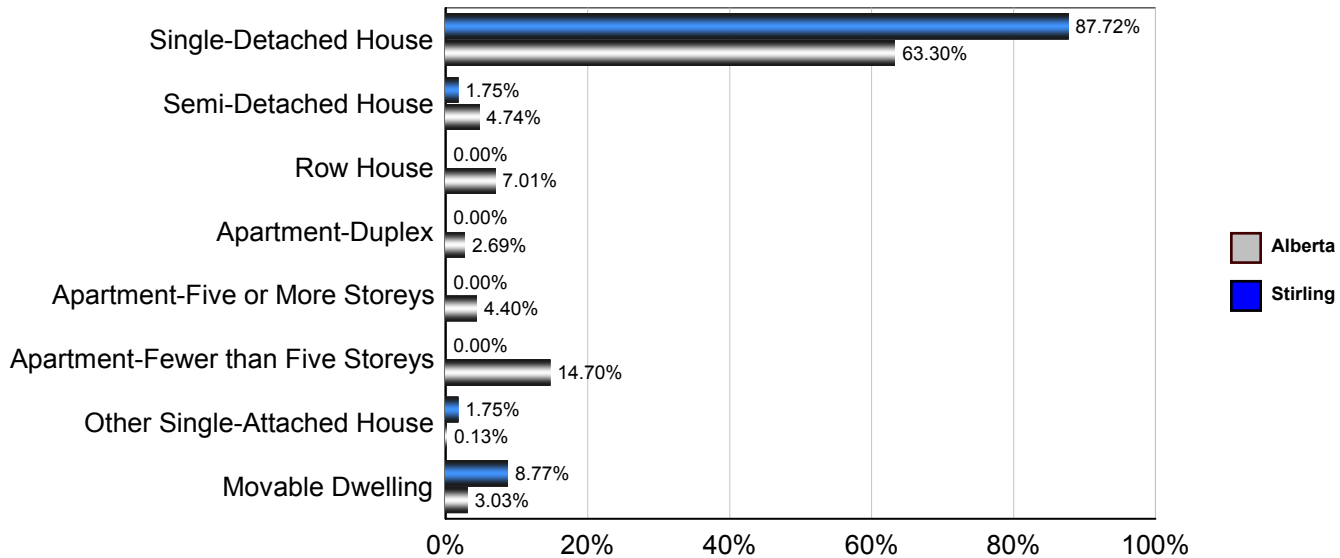
#### Stirling

	1996	2001	2006
<b>Owned</b>	220	225	215
<b>Rented</b>	15	35	70
<b>Band Housing</b>	0	0	0
<b>Total</b>	<b>235</b>	<b>260</b>	<b>285</b>

Source: Statistics Canada 2007.  
Stirling, Alberta. 2006 Community Profiles. 2006 Census.  
Statistics Canada Catalogue no. 92-591-XWE. Ottawa. Released March 13, 2007.

### Number of Occupied Private Dwellings by Structural Type - Stirling

#### Stirling vs Alberta (2006)



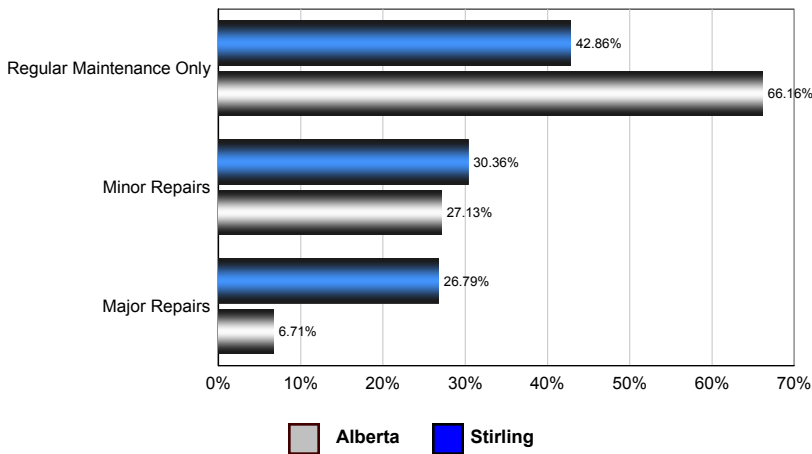
#### Stirling

	1996	2001	2006
<b>Single-Detached House</b>	235	255	250
<b>Semi-Detached House</b>	0	0	5
<b>Row House</b>	0	0	0
<b>Apartment - Duplex</b>	0	0	0
<b>Apartment - Five or More Storeys</b>	0	0	0
<b>Apartment - Fewer than Five Storeys</b>	0	5	0
<b>Other Single-Attached House</b>	0	0	0
<b>Movable Dwelling</b>	0	0	25
<b>Total</b>	<b>235</b>	<b>260</b>	<b>280</b>

Source: Statistics Canada 2007.  
Stirling, Alberta. 2006 Community Profiles. 2006 Census.  
Statistics Canada Catalogue no. 92-591-XWE. Ottawa. Released March 13, 2007.

## Number of Occupied Private Dwellings by the Condition of Dwelling - Stirling

### Stirling vs Alberta (2006)



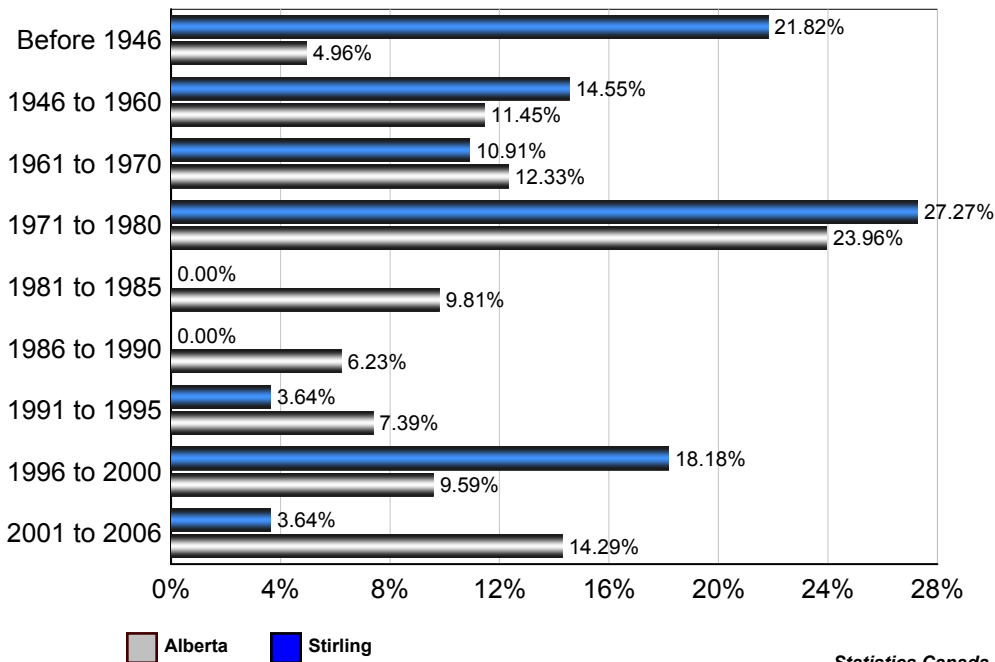
### Stirling

	1996	2001	2006
Regular Maintenance Only	115	110	120
Minor repairs	100	120	85
Major repairs	20	30	75
<b>Total</b>	<b>235</b>	<b>260</b>	<b>280</b>

Source: Statistics Canada 2007.  
Stirling, Alberta. 2006 Community Profiles. 2006 Census.  
Statistics Canada Catalogue no. 92-591-XWE. Ottawa. Released  
March 13, 2007.

## Number of Occupied Private Dwellings by Period of Construction - Stirling

### Stirling vs Alberta (2006)



### Stirling

	2006
Before 1946	60
1946 to 1960	40
1961 to 1970	30
1971 to 1980	75
1981 to 1985	0
1986 to 1990	0
1991 to 1995	10
1996 to 2000	50
2001 to 2006	10
<b>Total</b>	<b>275</b>

Source: Statistics Canada 2007.  
Stirling, Alberta. 2006 Community Profiles. 2006 Census.  
Statistics Canada Catalogue no. 92-591-XWE. Ottawa. Released March 13, 2007.

