

Tilley

Welcome

The Village of Tilley – “A Gr

We are very proud of the community of Tilley and hope that you will enjoy our virtual tour as a business person, visitor, tourist, or resident. We welcome you to our quiet Village in the middle of a very diverse oil, gas and agricultural area. Irrigate farming surrounds Tilley, where an assortment of crops flourish and livestock are raised. Also working parallel with agriculture in our area, we have a very active Petroleum Industry.

The Village of Tilley is a community where neighbours support each other. We have volunteers from all walks of life that bring forward the true sense of looking out for your neighbour, which only exists in a small village. The Village of Tilley is a safe and healthy environment for all people, especially those raising families and starting up businesses.

In Tilley strangers are just friends we have not met yet. We welcome you to our Village. I am sure your time here will be most enjoyable and we look forward to meeting you.

John Tinko, Mayor of the Village of Tilley

Area Overview

Presently, Tilley is a community of just over 400 people, with an additional population draw of over 99,000 from the [Palliser Economic Partnership](#) region. There are continuing plans for residential development and ample opportunities for industrial development. Tilley prides itself on being a small close knit community that supplies workers to surrounding larger cities. Tilley School accommodates children from Kindergarten to Grade 12 with a new pre-kindergarten program, as well the school supplies recreational activities for all.

Tilley's easy access to primary highways and location on the main Canadian Pacific Railroad are benefits to the industries located in the region. The natural resources are supported by the [Eastern Irrigation District \(EID\)](#) water supply infrastructure which is fed by the Bow River.

Tilley was established with the construction of the Canadian Pacific Railway (CPR). The CPR began a European advertising campaign to draw settlers into the Tilley region. The settlement area was marketed as potential for irrigated land and thus when first settling Tilley was extremely busy with the construction of the irrigation canals and the railway branch line. In 1910 the first hotel was built in Tilley to accommodate the CP Rail workers, and as a result of the CPR's marketing campaign many were Eastern European immigrants. The majority of the land was still on the market but there was plenty of CPR activity in the area at that time.

By 1928 fifty ready-made farms built by the CP Railway in Tilley had been sold and discussions began on opening up an additional one hundred farms for settlement. Finally, in 1929 people began pouring into the area and nearly every quarter was occupied within 2 years. As a result, agriculture really began in the spring of 1930.

In 1939 Fred Hankel drilled the first oil well just north of Tilley. When the well blew they had enough gas to supply the Village of Tilley. This discovery well in the Tilley area was the beginning of economic prosperity and is still producing gas today.

The Alberta Advantage

Alberta's economy is thriving - it has the highest average rate of economic growth in Canada at 3.8% per year in the last five years! Alberta has also consistently been the province with the highest investment per capita (Source: [Government of Alberta](#)). Southeast Alberta in particular has a flourishing energy sector, agri-food (including value-added agriculture), research and development in the area of defence, engineering and construction, metal fabrication and machinery, non-metallic minerals, and tourism (Source: [Palliser Economic Partnership](#)).

Location

Location

The Village of Tilley is located in Southeast Alberta within the County of Newell and was founded on its great access to transportation corridors.

Tilley's Proximity to Other Locations

Driving Distance from Tilley	Kilometres	Miles
Brooks, Alberta	24	15
Medicine Hat, Alberta	100	60
Canadian Forces Base Suffield/Defence Research and Development Canada Suffield	45	28
Calgary, Alberta	200	120
Edmonton, Alberta	474	295

Lethbridge, Alberta	200	120
Coutts, Alberta/Sweet Grass (US) 24 hour Crossing	202	125
Wildhorse US Border Crossing	167	105
Port Vancouver, British Columbia	1178	732
Seattle, USA	1640	1019
Spokane, USA	1032	641

Economic Base

Tilley and region are economically founded on their natural resources; from the irrigated land to the seemingly unlimited access to oil and gas wells.

The industry that has created the largest economic impact on the community of Tilley is the oil and gas industry. There is continuous drilling and exploration within the region as the oil industry continues to expand. There are also service companies that provide all goods and services needed for any oil and gas venture.

The secondary economic driver is agriculture. Within the region there are 285,000 acres of irrigated farmland in the Eastern Irrigation District (EID). Supporting businesses to the agriculture industry are also located within the region, assisting some 500 to 600 farms. Ranching is also a large sector within agriculture in the Tilley region. There are more than 260,000 cattle, as well as [X-L Foods \(Lakeside Packers\)](#) which is Canada's fastest growing beef producer in Canada.

The annual precipitation averages 300mm, with average rainfall during growing season 150mm. The growing season is approximately 137 days.

Economic Facts

Businesses:

There are many businesses within the community of Tilley. This is just a cross-section of what you will find.

- ALTA GAS Ltd.
- Alberta Treasury Branch Agency
- Astro Boiler
- Bantry Seed Cleaning Ltd.
- Burton CustomApplicators Ltd
- [Darago's Custom Grading Ltd.](#)
- Entire Tree Care
- [Fabian Seed Farms](#)
- Flatla Auto Wrecking
- Fresh Breath Safety Services Ltd.
- Grasslands Express Deliveries
- Gray Graphics
- Iron A Welding
- Kee-Lyn Homes
- Rick's Carpentry
- S & T Car Wash
- Shadow Oilfield Service Ltd.
- Sickels Fresh Meats
- Sterns Trucking
- Stroke Engine and Compressor Ltd.
- Tilley Corner Store
- [Wester's Garage](#)
- T1-Alta
- Tilley Hbtel
- Tilley Restaurant
- Tirol Gas Co-op Limited

Financial Institutions:

Located in Tilley:

- Alberta Treasury Branch (ATB) Agency – 403-377-2275

Located in Brooks:

- Bank of Nova Scotia – 403-362-3375
- Bank of Montreal – 403-362-3375
- Brooks Savings and Credit Union 403-362-4233
- Canadian Imperial Bank of Commerce (CIBC) 403-362-5511
- Chinook Credit Union – Brooks Savings 403-362-4233
- Scotiabank – 403-362-3491
- Toronto Dominion Bank – 403-362-6333
- Treasury Branch Agency – 403-641-3041
- RBC Royal Bank – 1-800-ROYAL11

Market

Alberta's economy is thriving. Businesses are growing and there is increasing focus on all sectors. Southeast Alberta in particular has a flourishing energy sector, agri-food (including value-added agriculture), research and development in the area of defence, engineering and construction, metal fabrication and machinery, non-metallic minerals, and tourism (Source: [Palliser Economic Partnership](#)).

Workforce

The workforce is drawn from the County of Newell, which, as of the last census, has a population of over 7,000 and the Palliser Region which has a population of more than 111,000. Homes in Tilley are very affordable, with some residential lots still available.

Natural Resources/Research

Extensive agriculture research is conducted at the [Crop Diversification Centre South](#) where their mandate is "To promote the development and growth of crop diversification in Alberta through applied research and technology transfer."

Defence Research and Development Canada (DRDC) Suffield is a military research centre where focus is directed on military engineering, mobility systems, weapons systems evaluation and on scientific activities surrounding the defence of chemical and biological warfare. DRDC Suffield is 45 km (28 miles) from the Village of Tilley.

Utilities

Electrical Power

EPCOR – Customer Service

Tel: 310-4300 (local call anywhere in Alberta)

<http://www.epcor.ca/>

Natural Gas

Tirol Gas Co-Op Limited

Tel: 403-964-3653

Dinosaur Gas Co-Op Limited

211A 3rd Street West

Brooks, Alberta

Tel: 403-362-5323

Telephone

Cactus Communications

404 Cassils Road W

Brooks, AB T1R 0V4

Tel: 403-362-5580

Telus Sales and Service

Tel: 310-2255

Telecommunications

Schools have access to the SuperNet. Residents can access internet through EIDNet and Platinum.

Water Supply

Water is supplied through Newell Regional Services Corporation.

Waste Management

Garbage is picked up weekly for all residents.

Recycling

The Newell Recycling Depot is located by Tilley Community Centre at 148 3rd Avenue East.

Taxation

2009 Mill Rate

Residential = 9.14%

Non-residential/Commercial = 11.64%

Transportation

Air Service

Tilley is a short distance away from three all-weather airport facilities, Brooks, Medicine Hat and Calgary.

Rail Service

Canadian Pacific Railway has a east-west artery going through the Village of Tilley.

Highways

Direct access to Highway #1 the Trans-Canada Highway east-west and direct access to Highway 876 north-south.

Trucking Firms

There are numerous trucking companies surrounding the area, alone there are 22 trucking companies in the parameters of Tilley and Brooks.

Bus Services

Greyhound Bus Service goes through Tilley with a station at Westers Garage (218 Centre Street; Tel: 403-377-2277), as well there is a Mini-Bus supplied through the County of Newell.

Couriers and Taxis

Purolator Courier and Brooks' Taxi service the Tilley region.

Community Lifestyle

Recreation

Village residents are always busy with community events. There are three parks within the village, these include: the school playground, the Westside playground and the Ball Park Facilities. Each of these host numerous community activities throughout the year. Tilley also has an Arena, Curling Club and Community Hall to host large events within the region.

The Tilley region is known for its beautiful Provincial Parks, including United Nations World Heritage Site – Dinosaur Provincial Park. Here you will find many endangered plants, as well as beautiful badlands scenery and fossils. The Village of Tilley is located in the **Canadian Badlands Region**. Tilebrook Provincial Park is also only 24 km (15 miles) from Tilley, Eld Rolling Hills Reservoir Campground is nearby, as well Lake Newell is only 18 km (11 miles) from Tilley. This region is recognized for its great hunting and fishing in Southeast Alberta.

Community Organizations

Tilley Community Centre
Tel: 403-377-2406

Tilley and District Agricultural Society
Tel: 403-377-2008

Tilley Friendship Society
Tel: 403-377-2590

Tilley Curling Club
Tel: 403-377-2033

Tilley Ball Park Association

Tilley Fire Hall
Tel: 403-377-2626

Religious Services

- Tilley Mennonite Church
- Bethany Lutheran Church

Special Events/Attractions

- Fire and Rescue Valentine's Dinner Show - February
- Kiwanis Ice Derby at Lake Newell Reservoir – February
- Rodeo – June
- Canada Day Celebrations – July
- Terry Fox Run – September
- Pheasant Festival Week – October
- Christmas Train/Community Christmas – December

Hospitality

Tilley Restaurant – Western and Chinese Cuisine - 110 Centre Street; Tel: 403-377-2442
Tilley Hotel – Western Style Cuisine - 221 Centre Street; Tel: 403-377-2840

Accommodation

The Tilley Hotel has accommodations for travellers, as well, there are many hotels located in Brooks and Medicine Hat.

Education

The Village of Tilley is served by the [Grasslands School Division #6](#), with the main office in Brooks, Alberta. [Tilley School](#) (Tel: 403-377-2233) caters to all children Kindergarten to Grade 9.

[Brooks Composite High School](#) (Tel: 403-362-4814) provides students education for Grade 10 to 12.

Daycare/Nursery

The preschool is called Tilley Tiger Cubs and gets kids ready for kindergarten. It is partially funded by [Family and Community Support Services \(FCSS\)](#).

Separate/Alternative Schools

Tilley Mennonite School

Catholic Schools

There are three Catholic schools available in Brooks through [Christ the Redeemer Catholic Schools](#): Holy Family Academy (K-6) St. Joseph's Collegiate (7-12) and St. Luke's Outreach School (10-12).

Post Secondary Education

[Medicine Hat College Brooks Campus](#) is only 20 minutes away from the Village of Tilley. This campus opened in 1991 and has recently developed on campus student housing.

Post Secondary

[Medicine Hat College Brooks Campus](#) is only 20 minutes away from the Village of Tilley. This campus opened in 1991 and has recently developed on campus student housing.

Health Care

The Village of Tilley is served by [Alberta Health Services](#), whose mandate is to provide patient-focused, quality health care that is accessible and sustainable for all Albertans.

The City of Brooks has a full scale hospital facility and emergency ward. The Brooks Health Centre (Tel: 403-501-3232) is an acute and continuing care facility. Core programs at the Brooks Health Centre include short stay surgical, pediatrics, 24-hour emergency and ambulatory care services, obstetrics and community health. Community health services are also available in Brooks at 440-3rd Street East (Tel: 403-501-3300).

Ambulances are available through the Brooks Health Centre and are staffed by both Paramedics and EMT's. Also, within the Tilley Fire Department four volunteers are medically trained and registered with the Alberta College of Paramedics and one volunteer is an EMT. Tilley is only 20 minutes from Brooks and 40 minutes from Medicine Hat via ambulance.

The Town of Bassano, only 73 km (45 miles) from Tilley, has recently renovated their hospital.

Tilley also has a seniors/low income housing residents available.

Emergency Services

Fire Protection

Tilley has a 16 member Fire Department which is run by volunteers who are also trained in emergency response. There is also 1 rescue unit and 1 pumper.

Police Services

The Royal Canadian Mounted Police (RCMP) provide policing and highway patrol for the region.

Community Services

Rural Crime Watch
Brooks and District Crime Stoppers (1-800-222-TIPS)

Municipal Office

The Canada Post Office and their services are now a private retail outlet and run out of the Municipal Office. The municipal office will assist you in all your municipal concerns, including taxes, business start-up and support.

Municipal Office
144 Centre Street
Tilley, Alberta T0J 3K0
Tel: 403-377-2203
Fax: 403-377-2234
Email: village.tilley@eidnet.org

Municipal Library

The school and public library are located as one and are extremely comprehensive to suit all research needs. Further, Tilley has recently joined the [Shortgrass Library System](#) which allows patrons to request books, DVDs, and other resources from other libraries around Alberta, providing residents with the educational benefits of larger centres.

Key Contacts for Business Development

[Community Futures Entre-Corp](#)
#202 – 556 4th Street S.E.
Medicine Hat, Alberta T1A 0K8
Tel: 403-528-2824
Fax: 403-527-3596
Toll Free: 1-888-528-2824
Email: bizinfo@entre-corp.com
www.entre-corp.com

Climate

Tilley and region is blessed with more sunlight than any other region in Canada – on average the region receives 2,433 hours of sunshine a year. The irrigated land helps farms flourish in the warm, hot summers and the typically cold winters are broken up by warm Chinook winds. The climate and infrastructure provides an environment for growing anything, including: wheat, forage crops, oil seeds, beans, lentils, corn, flax, canola.

Key Contacts

Municipal

John Timko
Mayor

Jeannette Zahn
Chief Administrative Officer

144 Centre Street
P.O. Box 155
Tilley, Alberta T0J 3K0
Tel: 403-377-2203
Fax: 403-377-2234
Email: village.tilley@eidnet.org

Molly Douglass
Reeve
P.O. Box 301
Gem Alberta T0J 1M0
Tel: 403-362-3266
Fax: 403-362-8681

Provincial

Arno Doerksen
Member of Legislative Assembly (MLA)
#630 Legislature Building
9718-107 Street
Edmonton, Alberta T5K 1E4
Tel: 780-415-6125
Fax: 780-415-0951

Constituency Office
P.O. Box 873
403 2nd Avenue West
Brooks, Alberta T1R 1B7
Tel: 403-362-6969
Fax: 403-362-5923
Email: Strathmore-brooks@assembly.ab.ca

Alberta Finance and Enterprise/ Palliser Economic Partnership (PEP)
109 Provincial Building
346 – 3rd Street S.E.
Medicine Hat, Alberta T1A 0G7
Tel: 403-529-3630
Fax: 403-529-3140

Elvira Smid, Regional Manager
Email: elvira.smid@gov.ab.ca

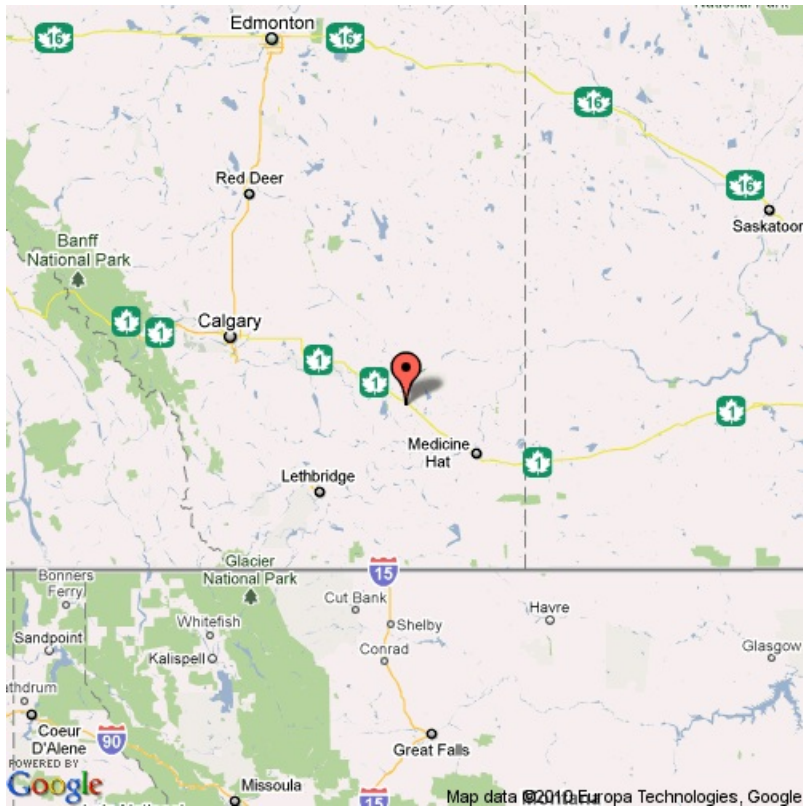
Gloria Filgas, Client Service Representative
Email: gloria.filgas@gov.ab.ca

Federal

LaVar Payne
Member of Parliament (MP)
Medicine Hat Constituency
House of Commons
Ottawa, Ontario K1A 0A6
Tel: 613-992-4516
Fax: 613-992-6181
Email: Payne.L@parl.gc.ca

Constituency Office:
PO. Box 640
6-403 2nd Avenue West
Brooks, Alberta T1R 1B6
Tel: 403-362-7677
Fax: 403-362-7055

Google Map



Disclaimer: Information in this profile has been provided from a variety of external sources. AlbertaFirst.com Ltd. provides this template, and each community posts their own content within the template. If you find inaccuracies or information you feel needs changing, please contact the community directly. Although every effort has been made to ensure the accuracy, currency and reliability of the content and data, AlbertaFirst.com Ltd. accepts no responsibility in this regard.

© AlbertaFirst.com Ltd., 2010.

6/8/2010

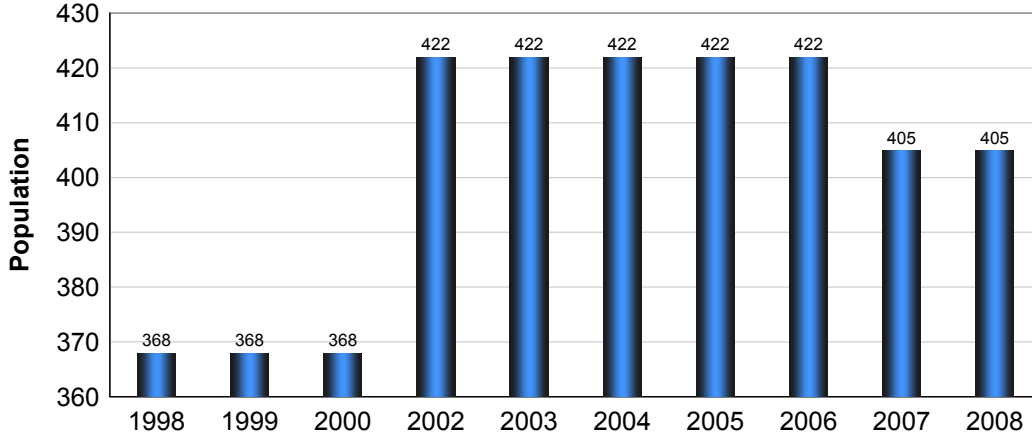
www.albertafirst.com

Page 7 of 22

A chart or table in this Profile may be blank. This will occur if there was no data available for that community for the specified time period

Municipal Population

Total Population - Tilley

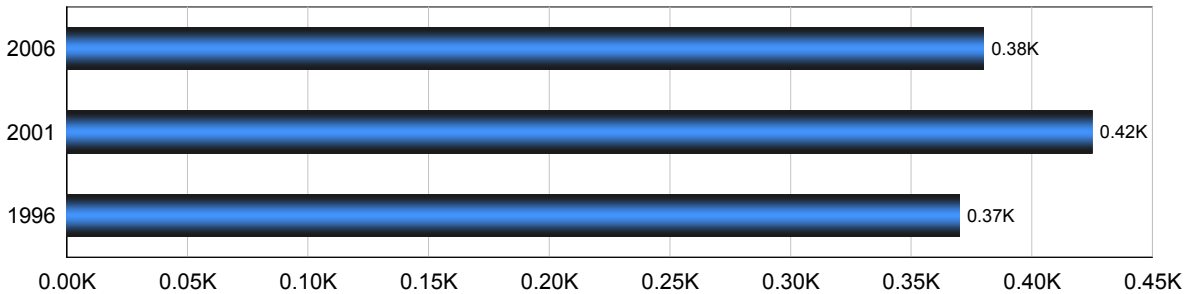


Year	Community Growth	Alberta Growth
2008	0.00%	2.37%
2007	(4.03)%	3.39%
2006	0.00%	1.95%
2005	0.00%	3.91%
2004	0.00%	0.95%
2003	0.00%	1.34%
2001	14.67%	4.02%
2000	0.00%	2.15%
1999	0.00%	3.24%
1998	0.00%	1.33%

Source: Statistics Canada 2007.
Tilley, Alberta. 2006 Community Profiles. 2006 Census.
Statistics Canada Catalogue no. 92-591-XWE. Ottawa. Released March 13, 2007.

Population

Total Population - Tilley

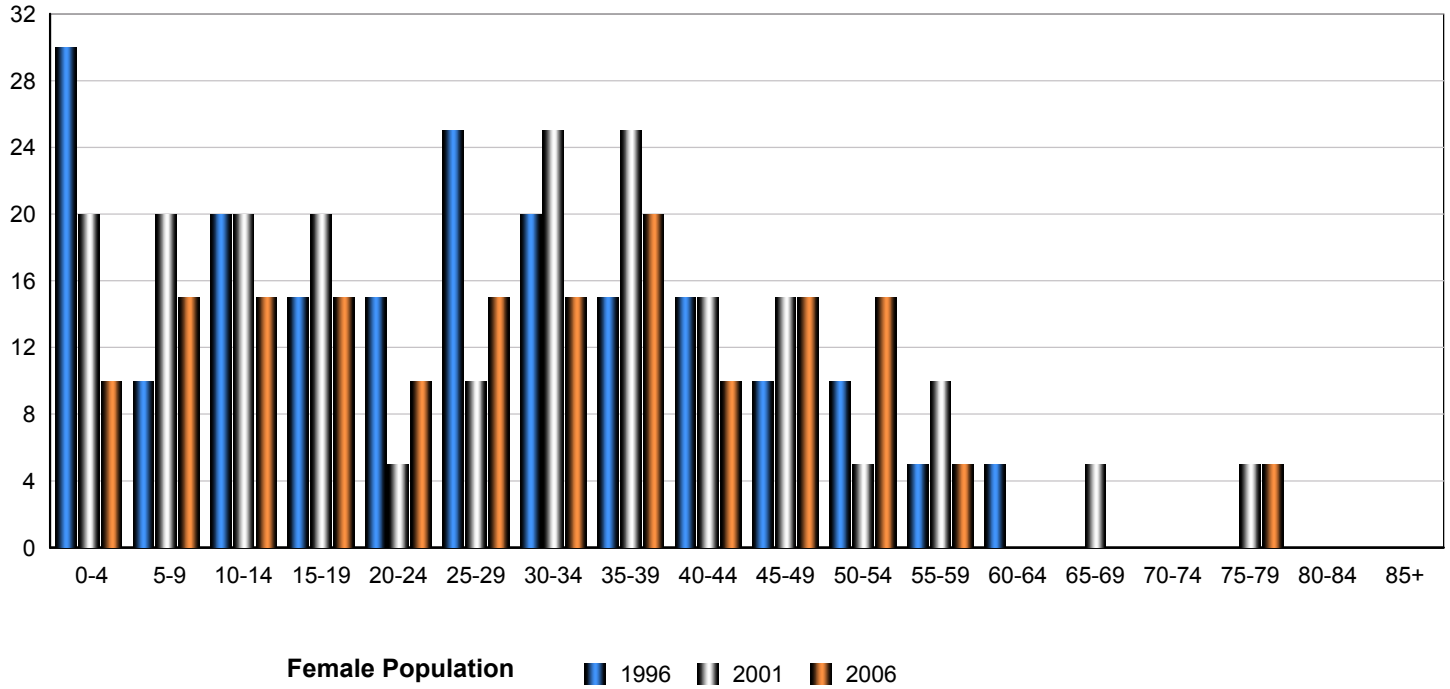


Census Year	Total Population	% Change
2006	380	9.70%
2001	425	14.70%
1996	370	14.30%

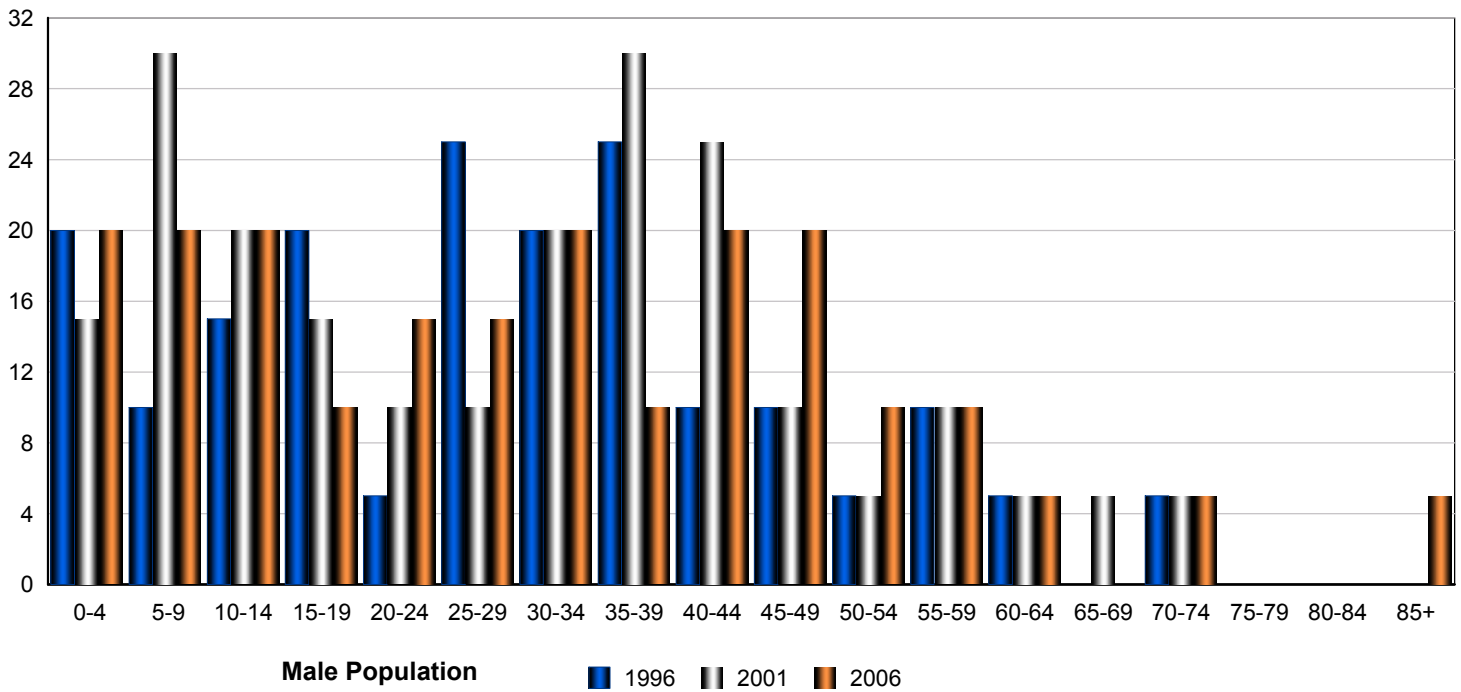
Source: Statistics Canada 2007.
Tilley, Alberta. 2006 Community Profiles. 2006 Census.
Statistics Canada Catalogue no. 92-591-XWE. Ottawa. Released March 13, 2007.

Total Population by Gender and Age - Tilley

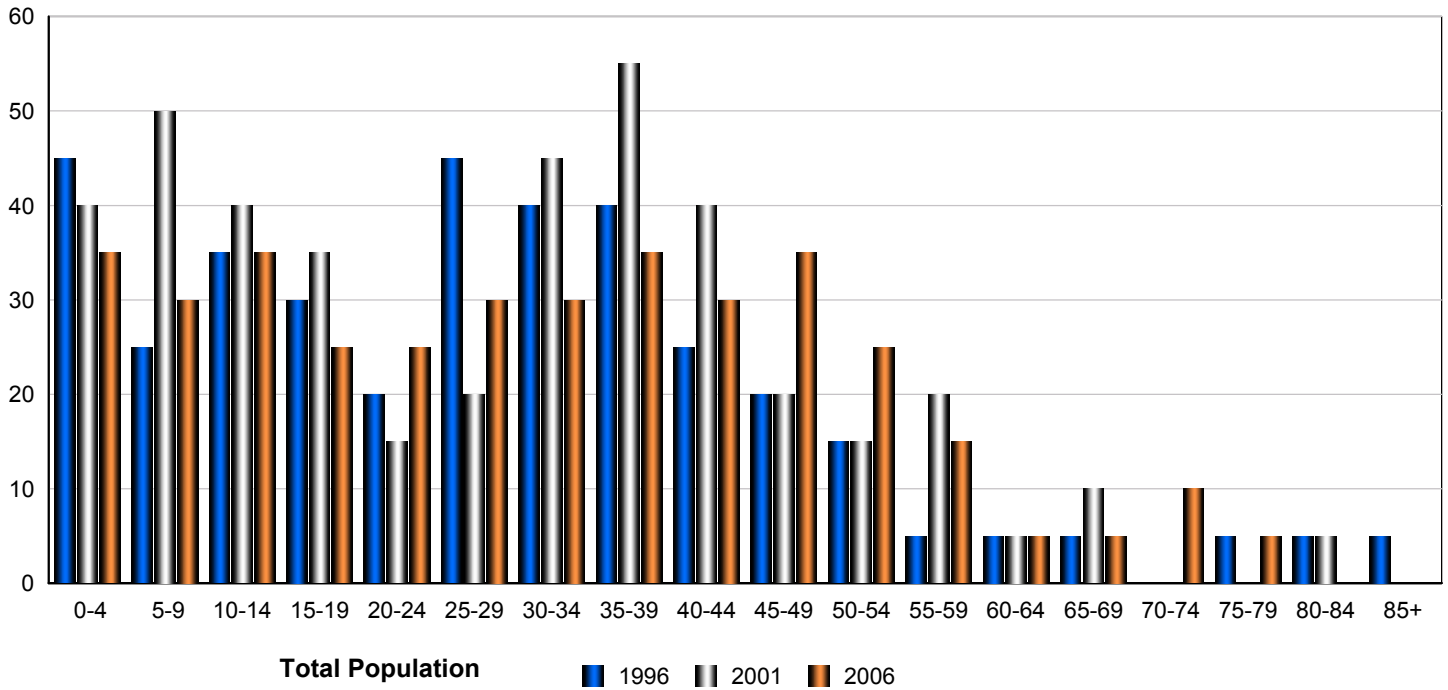
Census Population by Gender - Tilley



Census Population by Gender - Tilley



Census Population by Gender - Tilley



	Male			Female			Total		
	2006	2001	1996	2006	2001	1996	2006	2001	1996
0-4	20	15	20	10	20	30	30	35	50
5-9	20	30	10	15	20	10	35	50	20
10-14	20	20	15	15	20	20	35	40	35
15-19	10	15	20	15	20	15	25	35	35
20-24	15	10	5	10	5	15	25	15	20
25-29	15	10	25	15	10	25	30	20	50
30-34	20	20	20	15	25	20	35	45	40
35-39	10	30	25	20	25	15	30	55	40
40-44	20	25	10	10	15	15	30	40	25
45-49	20	10	10	15	15	10	35	25	20
50-54	10	5	5	15	5	10	25	10	15
55-59	10	10	10	5	10	5	15	20	15
60-64	5	5	5	0	0	5	5	5	10
65-69	0	5	0	0	5	0	0	10	0
70-74	5	5	5	0	0	0	5	5	5
75-79	0	0	0	5	5	0	5	5	0
80-84	0	0	0	0	0	0	0	0	0
85-89	5	0	0	0	0	0	5	0	0
Total	205	215	185	165	200	195	370	415	380

Source: Statistics Canada 2007.
 Tilley, Alberta. 2006 Community Profiles. 2006 Census.
 Statistics Canada Catalogue no. 92-591-XWE. Ottawa. Released March 13, 2007.

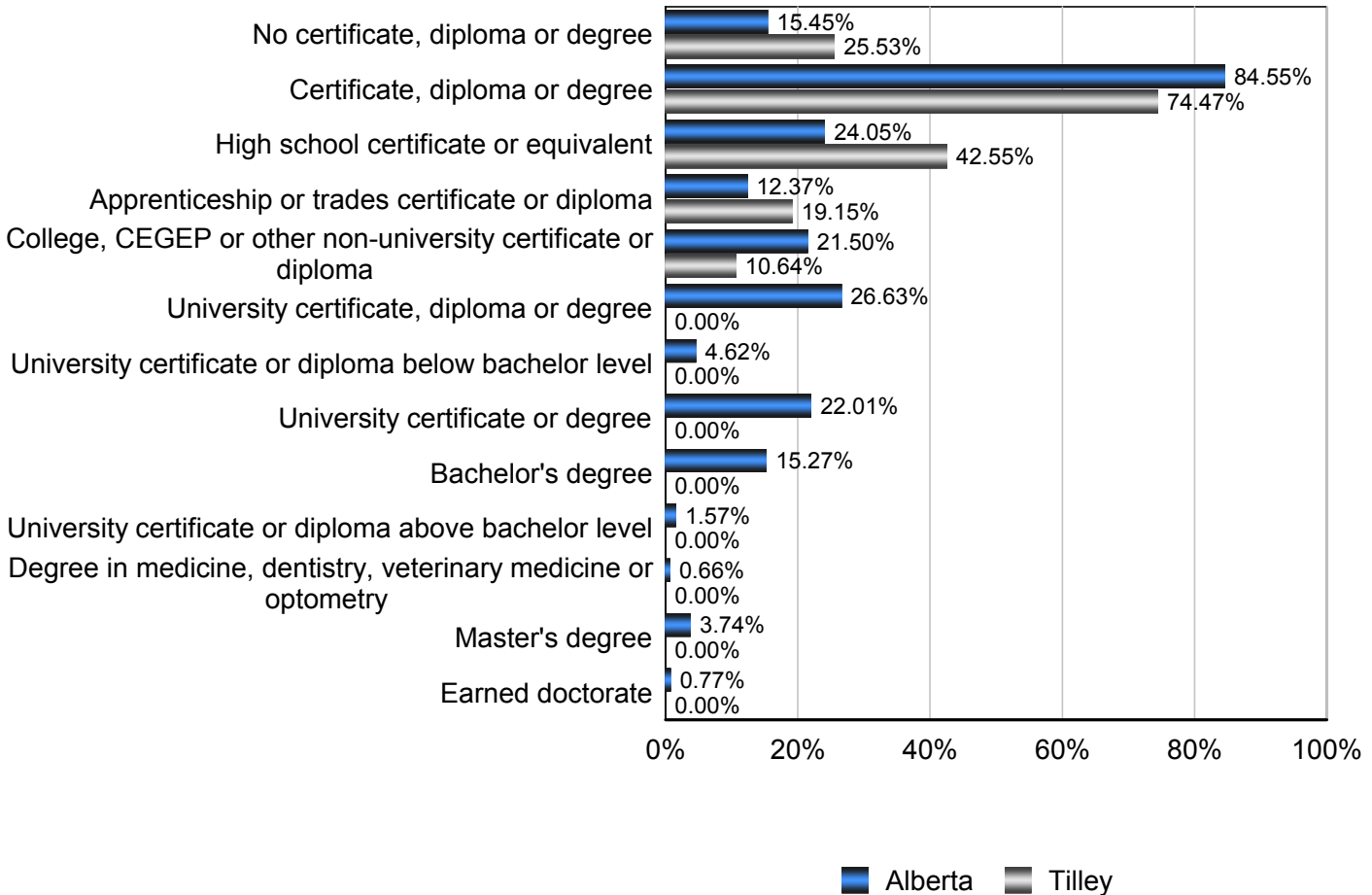
Education Statistics

Highest Level of Schooling, Population Aged 25-64 - Tilley (2006)

% of Population Aged 25-64

Highest Level of Schooling	Tilley	Alberta
No certificate, diploma or degree	25.53%	15.45%
Certificate, diploma or degree	74.47%	84.55%
High school certificate or equivalent	42.55%	24.05%
Apprenticeship or trades certificate or diploma	19.15%	12.37%
College, CEGEP or other non-university certificate or diploma	10.64%	21.50%
University certificate, diploma or degree	0.00%	26.63%
University certificate or diploma below bachelor level	0.00%	4.62%
University certificate or degree	0.00%	22.01%
Bachelor's degree	0.00%	15.27%
University certificate or diploma above bachelor level	0.00%	1.57%
Degree in medicine, dentistry, veterinary medicine or optometry	0.00%	0.66%
Master's degree	0.00%	3.74%
Earned doctorate	0.00%	0.77%

Amount by Which the Highest Level of Schooling - Tilley vs Provincial Average (2006)

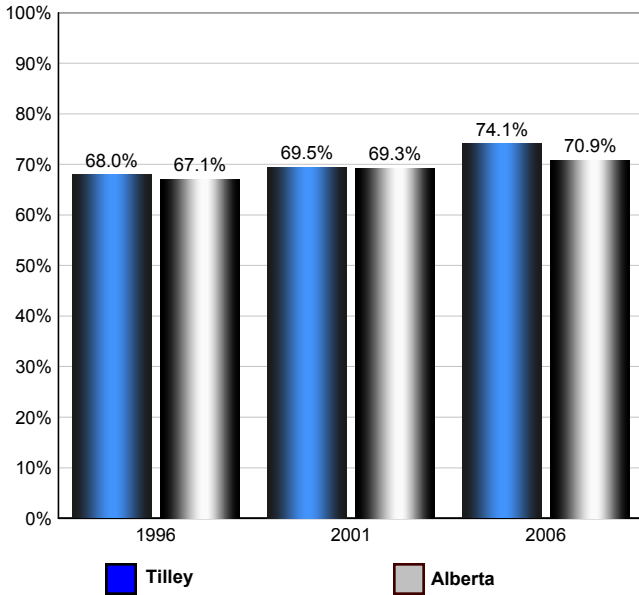


Source: Statistics Canada 2007.
 Alberta, Alberta. 2006 Community Profiles. 2006 Census.
 Statistics Canada Catalogue no. 92-591-XWE. Ottawa. Released March 13, 2007.

Labour Force

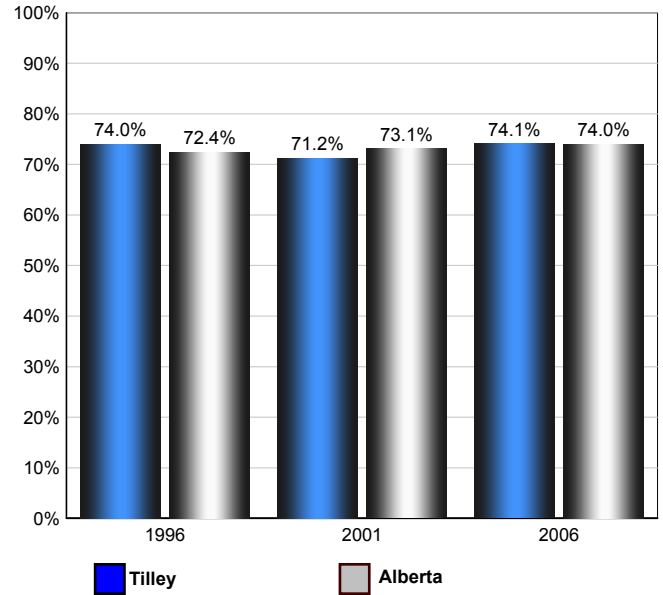
Annual Labour Force Activity Rates - Tilley vs Alberta

Employment Rate



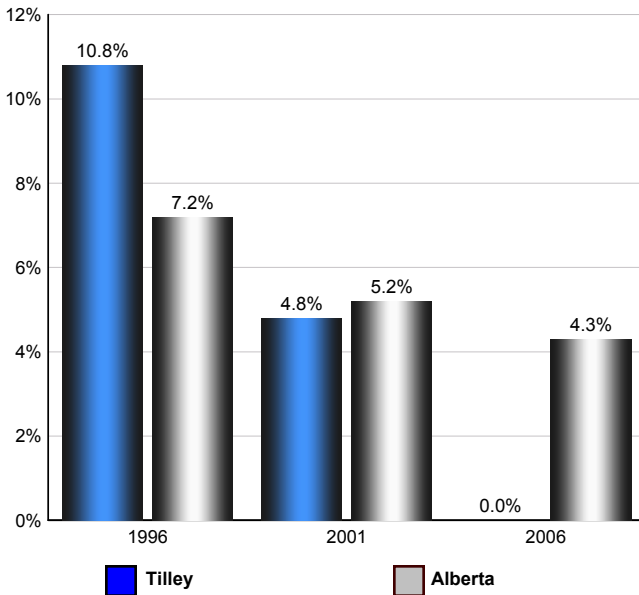
The Employment Rate is calculated by dividing the total employed by the total population 15 and over

Participation Rate



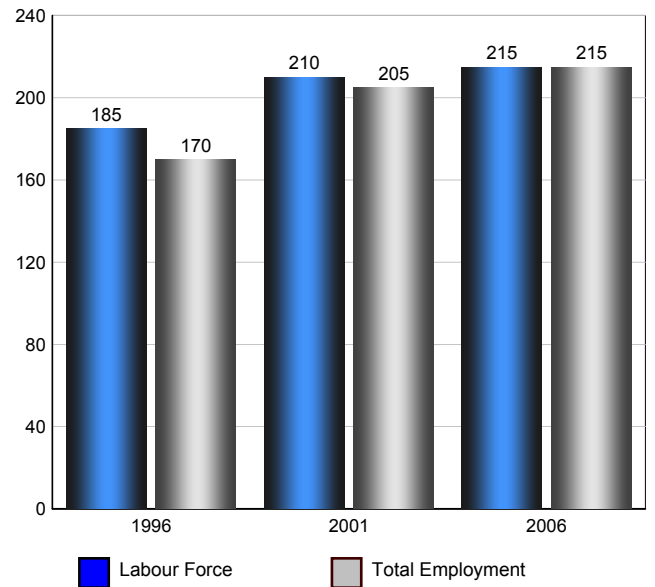
The Participation rate is calculated by summing together the number employed and unemployed and dividing the result by the total population aged 15 and over

Unemployment Rate



The Unemployment rate is calculated by dividing the total number of persons in the labour force that are reported as being unemployed by the total labour force.

Tilley Labour Force and Total Employment (Age 15+)



Source: Statistics Canada 2007. Tilley, Alberta. 2006 Community Profiles. 2006 Census. Statistics Canada Catalogue no. 92-591-XWE. Ottawa. Released March 13, 2007.

Labour Force Age 15+ - Tilley (2006)

Industry by Gender

Industry	Males	Females	Total
Agriculture, Forestry, Fishing and Hunting	0	0	0
Mining, Oil and Gas Extraction	50	0	50
Utilities	0	0	0
Construction	10	10	20
Manufacturing	10	10	20
Wholesale Trade	0	0	0
Retail Trade	0	10	10
Transportation and Warehousing	0	0	0
Information and Cultural Industries	10	0	10
Finance and Insurance	0	10	10
Real Estate, Rental and Leasing	0	0	0
Professional, Scientific and Technical Services	0	0	0
Management of Companies and Enterprises	0	0	0
Administrative and Support, Waste Management and Remediation Services	0	0	0
Educational services	0	15	15
Health care and social assistance	0	10	10
Arts, Entertainment and Recreation	0	0	0
Accommodation and Food Services	10	15	25
Other Services (except Public Administration)	25	0	25
Public Administration	0	15	15
Total	115	95	210

Source: Statistics Canada 2007.
Tilley, Alberta. 2006 Community Profiles. 2006 Census.
Statistics Canada Catalogue no. 92-591-XWE. Ottawa. Released March 13, 2007.

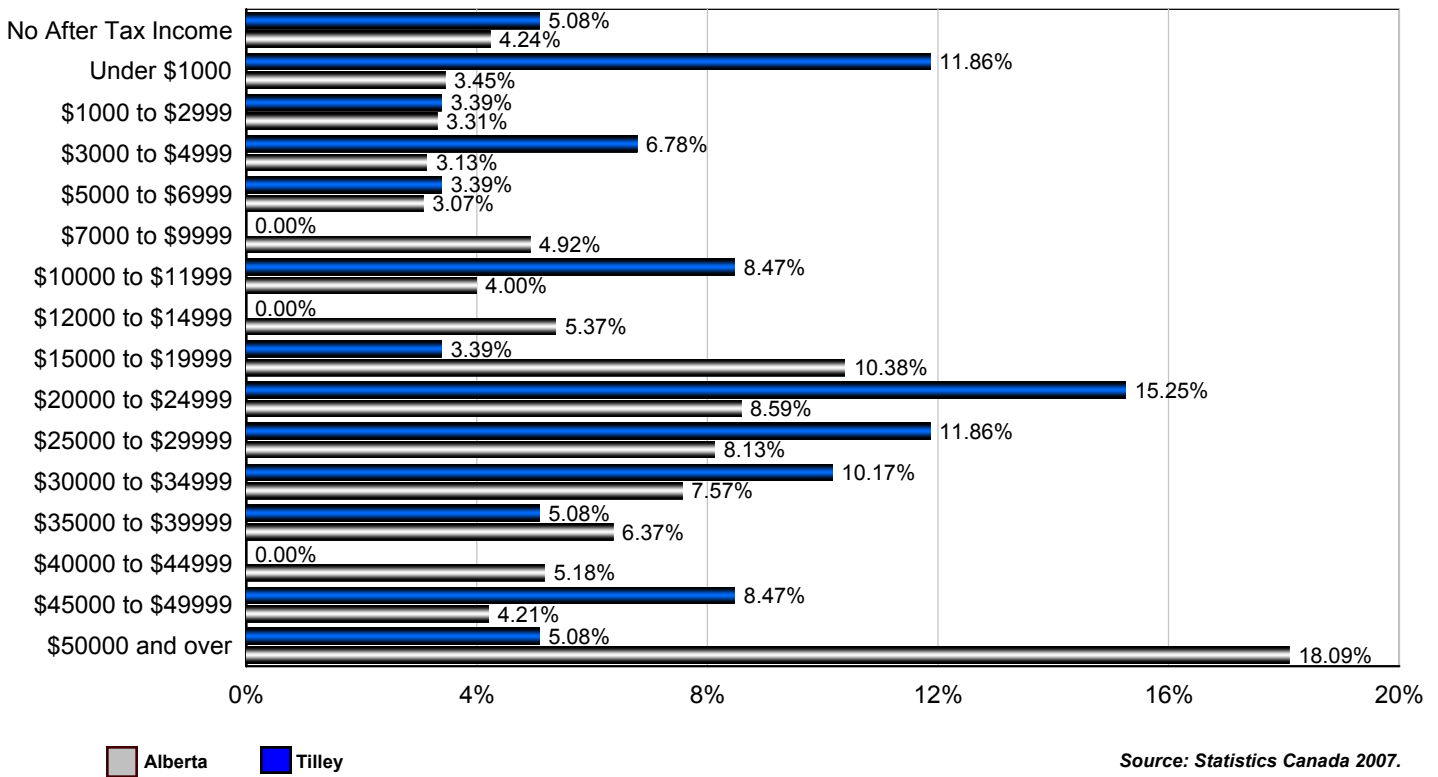
Occupation by Gender

Occupation	Males	Females	Total
Management Occupations	10	0	10
Business, Finance and Administration Occupations	0	35	35
Natural and Applied Sciences and Related Occupations	0	0	0
Health Occupations	0	0	0
Occupations in Social Science, Education, Government Service	0	0	0
Occupations in Art, Culture, Recreation and Sport	10	0	10
Sales and Service Occupations	10	40	50
Trades, Transport and Equipment Operators and Related Occupations	55	0	55
Occupations Unique to Primary	35	0	35
Occupations Unique to Processing, Manufacturing and Utilities	0	10	10
Total	120	85	205

Source: Statistics Canada 2007.
Tilley, Alberta. 2006 Community Profiles. 2006 Census.
Statistics Canada Catalogue no. 92-591-XWE. Ottawa. Released March 13, 2007.

Income

Percent of Population 15+ by Income Bracket - Tilley vs Alberta (2005)



Source: Statistics Canada 2007.
 Tilley, Alberta. 2006 Community Profiles. 2006 Census.
 Statistics Canada Catalogue no. 92-591-XWE. Ottawa. Released March 13, 2007.

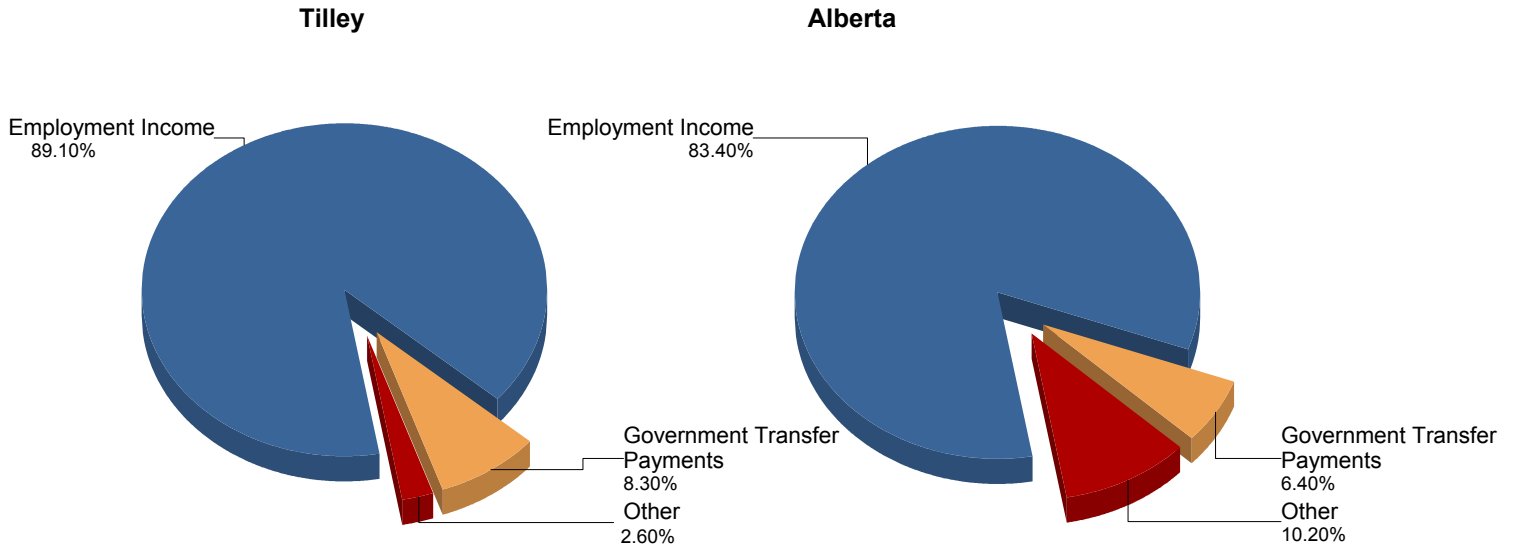
Population 15+ by Total After Tax Income - Tilley (2005)

	Males	Females	Total
Without After-Tax Income	0	15	15
Under \$1,000	20	10	30
\$1,000 to \$2,999	0	0	0
\$3,000 to \$4,999	10	10	20
\$5,000 to \$6,999	0	15	15
\$7,000 to \$9,999	0	0	0
\$10,000 to \$11,999	0	15	15
\$12,000 to \$14,999	10	0	10
\$15,000 to \$19,999	0	10	10
\$20,000 to \$24,999	20	25	45
\$25,000 to \$29,999	15	20	35
\$30,000 to \$34,999	15	10	25
\$35,000 to \$39,999	10	10	20
\$40,000 to \$44,999	0	0	0
\$45,000 to \$49,999	25	0	25
\$50,000 and over	15	0	15
Total	145	150	295

Due to rounding consolidating the shown income brackets may lead to errors. Such errors would be most pronounced for small communities.

Source: Statistics Canada 2007.
 Tilley, Alberta. 2006 Community Profiles. 2006 Census.
 Statistics Canada Catalogue no. 92-591-XWE. Ottawa. Released March 13, 2007.

Composition of Family Income for Economic Families - Tilley vs Alberta (2005)



Economic family total income - The total income of an economic family is the sum of the total incomes of all members of that family.

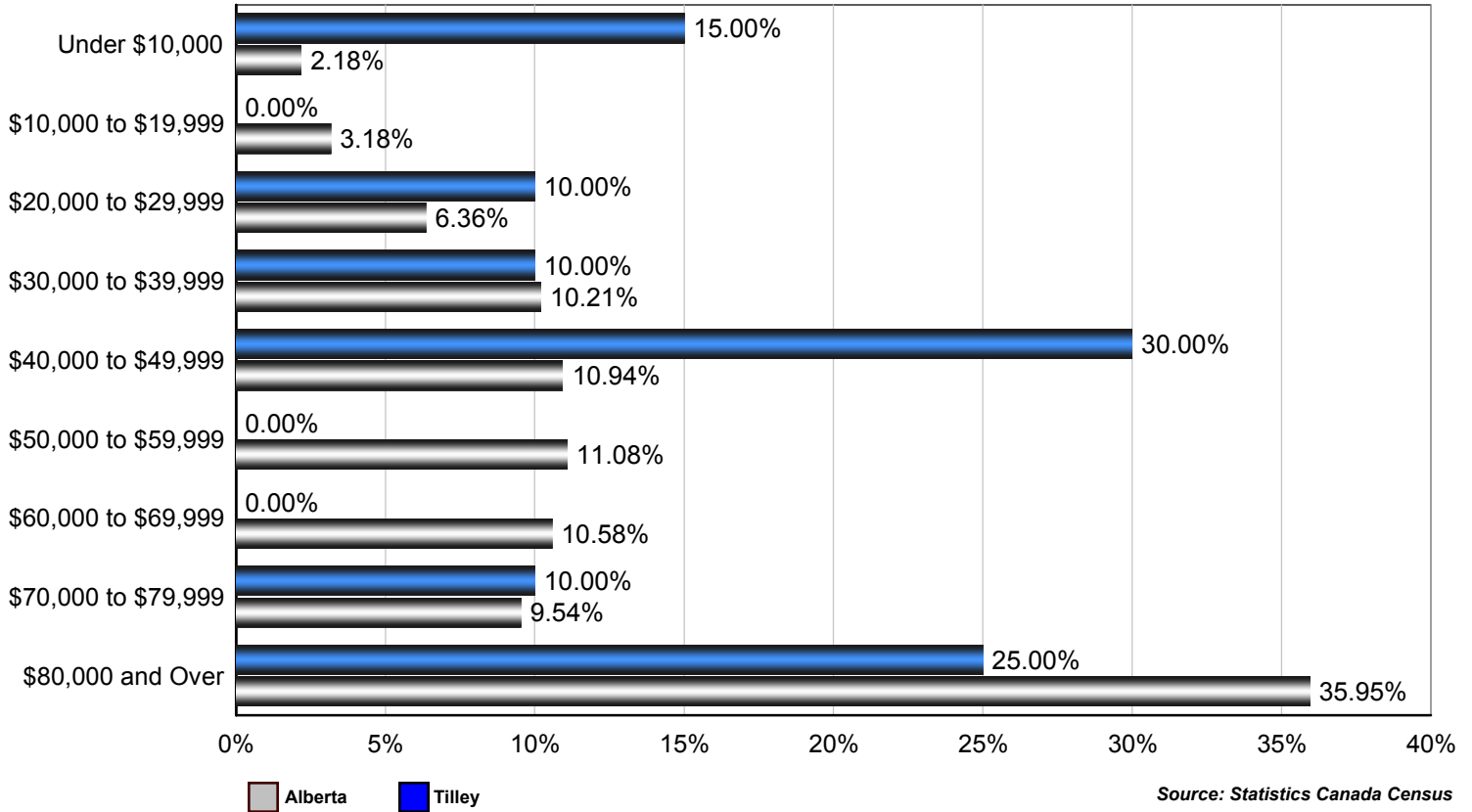
Source: Statistics Canada 2007.
 Tilley, Alberta. 2006 Community Profiles. 2006 Census.
 Statistics Canada Catalogue no. 92-591-XWE. Ottawa. Released March 13, 2007.

Population 15+ With Employment Earnings - Tilley (2005)

	Males	Females	Total
Earnings - As a % of total Earnings	86%	70%	79%
Median Employment Earnings	\$34,890	\$21,768	\$27,044
Average Employment Earnings	\$35,586	\$21,441	\$29,230

Source: Statistics Canada 2007.
 Tilley, Alberta. 2006 Community Profiles. 2006 Census.
 Statistics Canada Catalogue no. 92-591-XWE. Ottawa. Released March 13, 2007.

Percent of Total Economic Families by After-tax Income Brackets - Tilley vs Alberta (2005)



Number of Economic Families by After-tax Income Brackets - Tilley (2005)

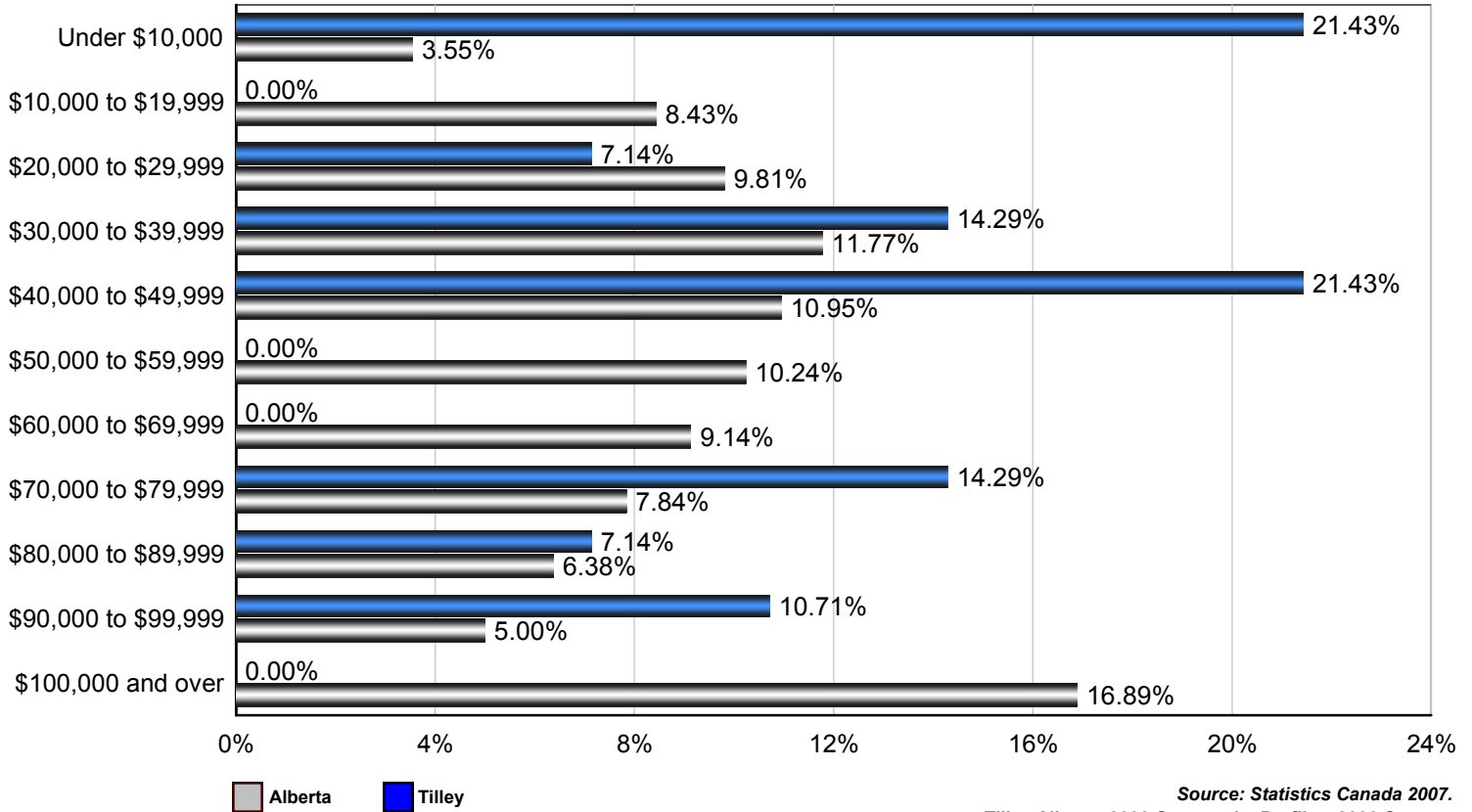
Income Bracket	Number of Families
Under \$10,000	15
\$10,000 to \$19,999	0
\$20,000 to \$29,999	10
\$30,000 to \$39,999	10
\$40,000 to \$49,999	30
\$50,000 to \$59,999	0
\$60,000 to \$69,999	0
\$70,000 to \$79,999	10
\$80,000 and over	25
Total	100

Family Income	
Median After-Tax Family Income	\$42,175
Average After-Tax Family Income	\$51,326

Due to rounding consolidating the shown income brackets may lead to errors. Such errors would be most pronounced for small communities.

Source: Statistics Canada 2007.
 Tilley, Alberta. 2006 Community Profiles. 2006 Census.
 Statistics Canada Catalogue no. 92-591-XWE. Ottawa. Released March 13, 2007.

Percent of Total Private Households by After-tax Income Brackets - Tilley vs Alberta (2005)



Source: Statistics Canada 2007.
 Tilley, Alberta. 2006 Community Profiles. 2006 Census.
 Statistics Canada Catalogue no. 92-591-XWE. Ottawa. Released March 13, 2007.

Number of Private Households by After-tax Income Brackets - Tilley (2005)

Income Bracket	Number of Families
Under \$10,000	30
\$10,000 to \$19,999	0
\$20,000 to \$29,999	10
\$30,000 to \$39,999	20
\$40,000 to \$49,999	30
\$50,000 to \$59,999	0
\$60,000 to \$69,999	0
\$70,000 to \$79,999	20
\$80,000 to \$89,999	10
\$90,000 to \$99,999	15
\$100,000 and Over	0
Total	140

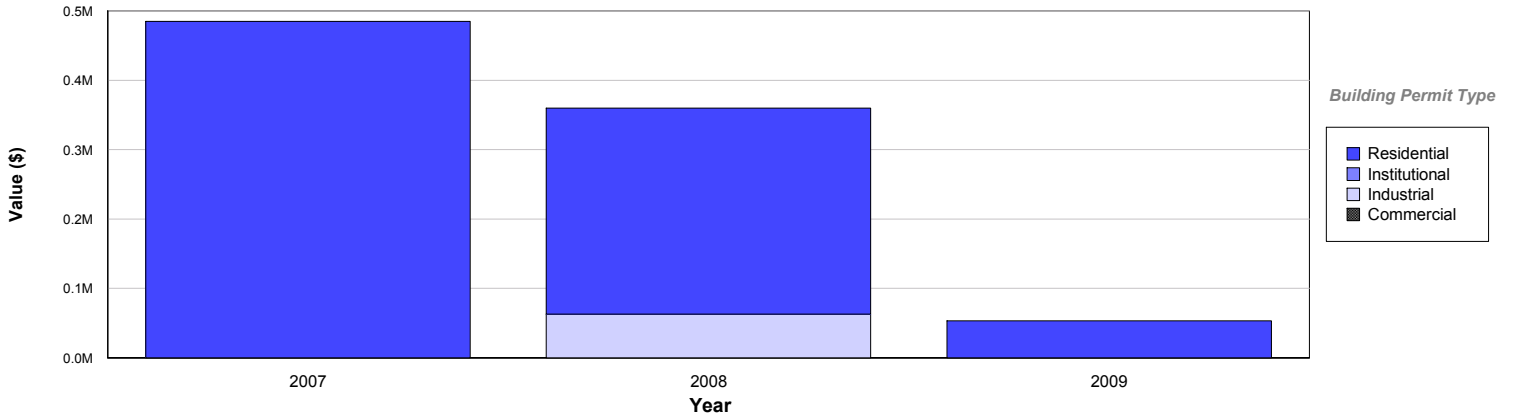
Family Income	
Median After-Tax Family Income	\$42,054
Average After-Tax Family Income	\$46,156

Due to rounding consolidating the shown income brackets may lead to errors. Such errors would be most pronounced for small communities.

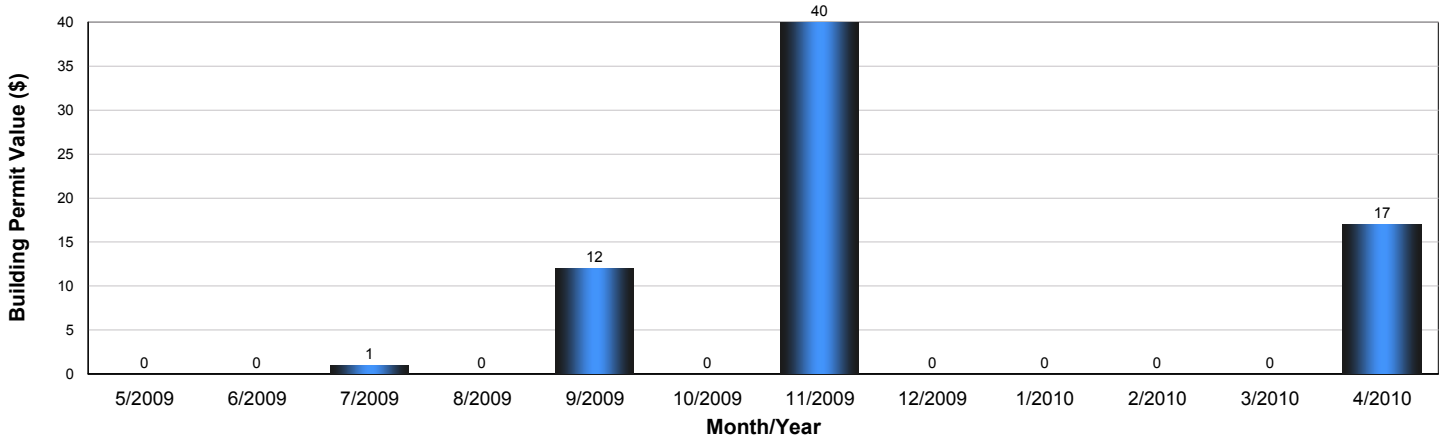
Source: Statistics Canada Census

Building Permits

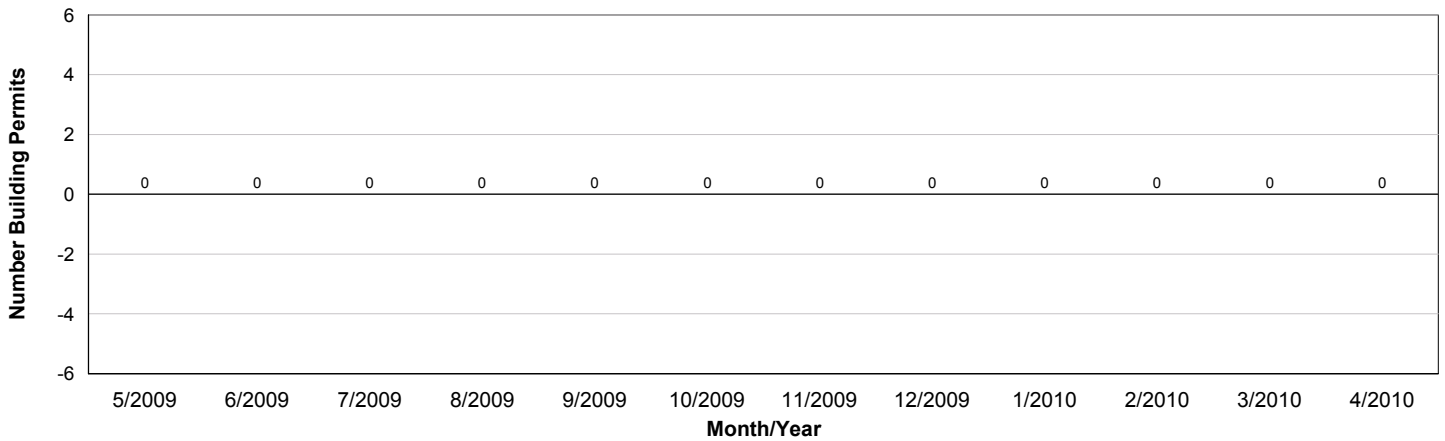
Value of Building Permits - Tilley



Year	Residential	Industrial	Commercial	Institutional	Total
2009	\$53,000	\$0	\$0	\$0	\$53,000
2008	\$297,000	\$63,000	\$0	\$0	\$360,000
2007	\$485,000	\$0	\$0	\$0	\$485,000



Number of Building Permits - Tilley

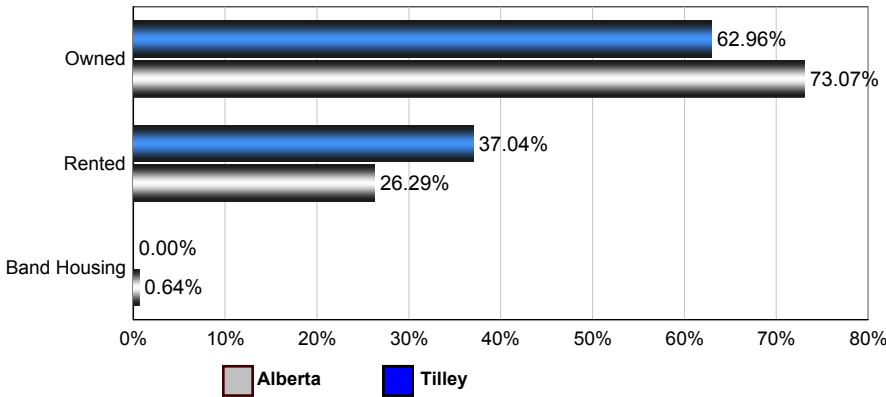


Source: Statistics Canada, Building Permits / Permis de bâtir, Publication 64-001-XWF, 2000 - 2009.

Dwellings

Number of Occupied Private Dwellings by Ownership - Tilley

Tilley vs Alberta (2006)



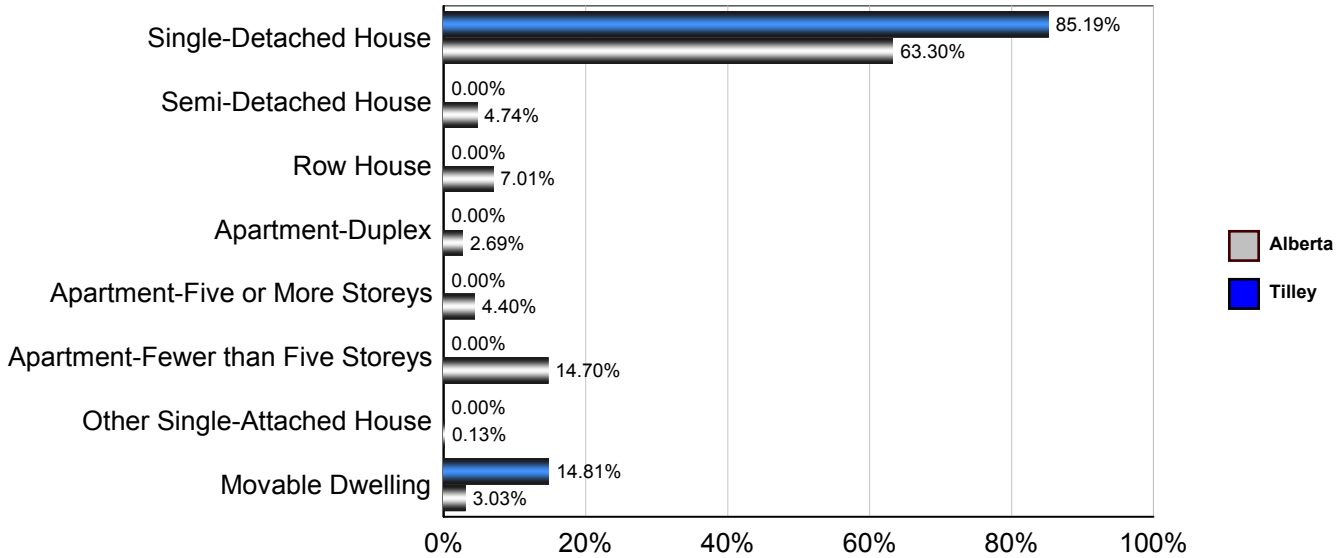
Tilley

	1996	2001	2006
Owned	65	100	85
Rented	60	35	50
Band Housing	0	0	0
Total	125	135	135

Source: Statistics Canada 2007.
 Tilley, Alberta. 2006 Community Profiles. 2006 Census.
 Statistics Canada Catalogue no. 92-591-XWE. Ottawa. Released March 13, 2007.

Number of Occupied Private Dwellings by Structural Type - Tilley

Tilley vs Alberta (2006)



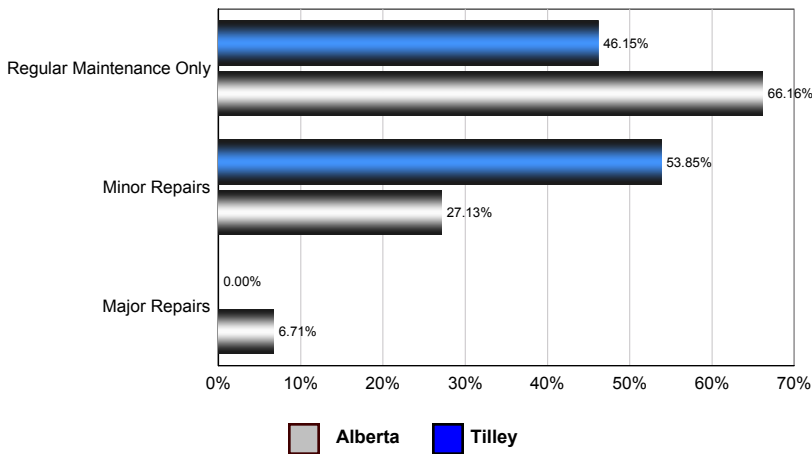
Tilley

	1996	2001	2006
Single-Detached House	80	90	115
Semi-Detached House	0	0	0
Row House	0	0	0
Apartment - Duplex	0	0	0
Apartment - Five or More Storeys	0	0	0
Apartment - Fewer than Five Storeys	15	10	0
Other Single-Attached House	0	0	0
Movable Dwelling	30	40	20
Total	125	140	135

Source: Statistics Canada 2007.
 Tilley, Alberta. 2006 Community Profiles. 2006 Census.
 Statistics Canada Catalogue no. 92-591-XWE. Ottawa. Released March 13, 2007.

Number of Occupied Private Dwellings by the Condition of Dwelling - Tilley

Tilley vs Alberta (2006)



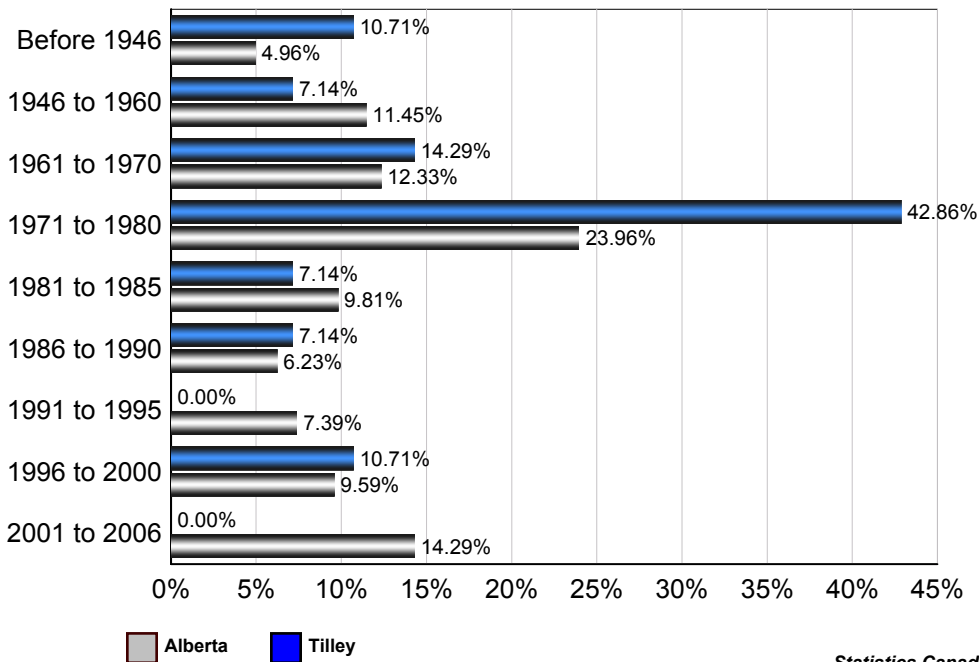
Tilley

	1996	2001	2006
Regular Maintenance Only	70	70	60
Minor repairs	45	55	70
Major repairs	10	15	0
Total	125	140	130

Source: Statistics Canada 2007.
Tilley, Alberta. 2006 Community Profiles. 2006 Census.
Statistics Canada Catalogue no. 92-591-XWE. Ottawa. Released March 13, 2007.

Number of Occupied Private Dwellings by Period of Construction - Tilley

Tilley vs Alberta (2006)



Tilley

	2006
Before 1946	15
1946 to 1960	10
1961 to 1970	20
1971 to 1980	60
1981 to 1985	10
1986 to 1990	10
1991 to 1995	0
1996 to 2000	15
2001 to 2006	0
Total	140

Source: Statistics Canada 2007.
Tilley, Alberta. 2006 Community Profiles. 2006 Census.
Statistics Canada Catalogue no. 92-591-XWE. Ottawa. Released March 13, 2007.

