

Warburg

<http://www.villageofwarburg.ab.ca>

Welcome

What better way to describe the Village of Warburg than as a progressive community with a strong desire to grow with the times yet still retain its small town atmosphere.

Warburg was originally named Varburg after the Swedish birthplace of a long-time resident Albin Benson, now deceased. The name was later changed to accommodate English pronunciation. Today, residents maintain communication with the German community of Warburg on the Rhine River and it is hoped the link will develop into an exchange program in the future.

Warburg welcomes you with open arms and looks forward to having your ideas and participation in making it an even better place to live.

Mayor and Council
Village of Warburg

Area Overview

In 1909, the Lacombe and Northwestern Railway was built by workers from Lacombe, Rimbey and Bentley as a means for getting local farm products to the markets. In 1916 the company went bankrupt and the line was taken over by the government and extended to Warburg in 1928. Since then, Warburg's population has grown slowly but steadily to 560 [as of 2001], with a trading area population of over 8,000.

Location

The Village of Warburg is located in Leduc County. It is 83 km southwest of Edmonton, 49 km west of Leduc, 95 km west of Wetaskiwin and 52 km east of Drayton Valley.

Economic Base

The major industrial base of Warburg is farming, oil and dairying.

Economic Facts

NA

Major Businesses	Products/Services
NA	NA

Financial Institutions

Alberta Treasury Branch [agent]

Utilities

Fortis
Tel: 310-9473

Natural Gas

Atco Gas
Tel: 310-5678

Telephone

Telus Communications
310-2255

Water Supply

Warburg receives water from 2 water wells. Water is filtered by nanofiltration and treated. The pumping capacity is 60 gallons per minute.

Waste Management

Sewage treatment is provided by a lagoon system. Garbage is picked up weekly.

Taxation

	<u>Residential/Farmland</u>	<u>Non-Residential</u>
2005		
Municipal Tax Rate	20.4300	22.4300
Education - Alberta School Foundation Fund Tax Rate	4.5000	6.5000
Seniors Lodge Accommodation Tax Rate	.0700	.0700

Mill Rates [2007]

Residential - Public 21.5

Residential - Separate N/A

Non-Residential - Public 26.5

Non-Residential - Separate N/A

Transportation

Air Services

The nearest commercial and air freight services are at Edmonton.

Highways

Connecting highways are Highway 39 east of Leduc, Highway 2 north to Edmonton, Highway 39 west to Drayton Valley, Secondary Highway 770 south to Highway 13, both going to Wetaskiwin, and Highway 770 north which connects to Highway 16 east and west.

Trucking Firms

Wolf Country Transport (2003)

Bus Services

Daily inter-community bus service is available.

Couriers and Taxis

Country Cabs Taxi Service

Loomis and Purolator Couriers.

Community Lifestyle

Recreation

Local recreation facilities include an artificial ice arena, curling rink, baseball diamonds, parks, rodeo grounds, community and legion halls.

Community Organizations

Community organizations and activities include the Figure Skating Club, Minor Hockey Club, Curling Club, Art Club, Minor Baseball, Pony Club, Elks Bingo, Ladies Night Out, Adult Volleyball, Adult Hockey and aerobics.

Service clubs include the Order of Royal Purple, BPO Elks, Pioneer Agricultural Society, Public Library Board, Recreation Board, Canadian Legion Auxiliary, Senior Citizen's Club, Warburg Branch - Canadian Legion, Arena Club and Sunnybrook Fish and Game.

Religious Services

- Warburg Alliance Church
- St. Charles Catholic Church
- Trinity Lutheran Church
- Seventh Day Adventist Church
- Warburg United Church

Special Annual Events/Attractions

- Canada Day Celebrations -- June 21/22, 2008
- Family Halloween Dance -- October 25, 2008
- Hospitality

Accommodation

- Warburg Hotel

Restaurants

- Shell Corner Restaurant
- Cream Can Cafe

- Double G Emporium(lunches)

Education

Wárburg is part of the Black Gold Regional Division #18, headquartered in Nsku [Tel: 780-955-3555].

Daycare/Nursery

Wárburg has 1 playschool [Tel: 780-848-2837].

Public

Wárburg School [K-12] 780-848-2837

Separate

N/A

Private

N/A

Post Secondary

Adult education programs are available from the County of Leduc Further Education Council [Tel: 780-986-1811].

Wárburg residents also have access to Edmonton-based post-secondary institutions such as The University of Alberta, Grant MacEwan College, and Northern Alberta Institute of Technology [NAIT].

Health Care

The closest hospital is in Leduc, Devon or Drayton Valley. Breton also has a medical office and nursing home available to Wárburg residents. Cloverleaf Manor, a senior citizens' residence, is located in Wárburg.

Emergency Services

Fire Protection

Wárburg is served by a volunteer fire department and 4 trucks [Tel: 780-848-2311].

Police Services

Wárburg is served by the Thorsby detachment of the Royal Canadian Mounted Police [RCMP] [Tel: 780-789-3950 or 780-789-3951].

Ambulance Services

Parkland Ambulance Authority is stationed at Wárburg.

Community Services

Municipal

Village of Wárburg
Box 29
Wárburg, Alberta T0C2T0
Tel: 780-848-2841
Fax: 780-848-2296

Public Library

Wárburg Public Library - 780-848-2391
open: Tuesdays & Thursdays 10:00 am - 6:00 pm
Saturdays 10:00 am - 2:00 pm

Provincial

Department of Highways

Federal

Canada Post Office - 780-848-2234

Key Contacts

Municipal

Village of Warburg
Box 29
Warburg, Alberta T0C2T0
Tel: 780-848-2841
Fax: 780-848-2296

warburg@telusplanet.net

www.villageofwarburg.ab.ca

May Metke - Mayor

Chris Pankewitz
Administrator

Provincial (Updated December 2004)

David Pattison
Director, Edmonton Region
Regional Development Branch
Alberta Economic Development
5th Floor, Commerce Place
10155 - 102 Street
Edmonton, AB T5J 4L6
Tel: 780-427-6648
Fax: 780-422-5804
E-Mail: david.pattison@gov.ab.ca
(updated May 10, 2004)
Jan Couper, Client Services Representative
Tel: 780-427-6291
E-Mail: jan.couper@gov.ab.ca

Diana McQueen - Member of the Legislative Assembly [MLA]
Drayton Valley - Calmar Constituency
#503 Legislature Building
10800 - 97 Avenue
Edmonton, Alberta T5K 2B6
Tel: 780-415-9466
Fax: 780-422-0351

Federal (Updated June 2001)

Blaine Calkins
Member of Parliament [MP]
Wetaskiwin Constituency
House of Commons
Ottawa, Ontario K1A 0A6

Google Map



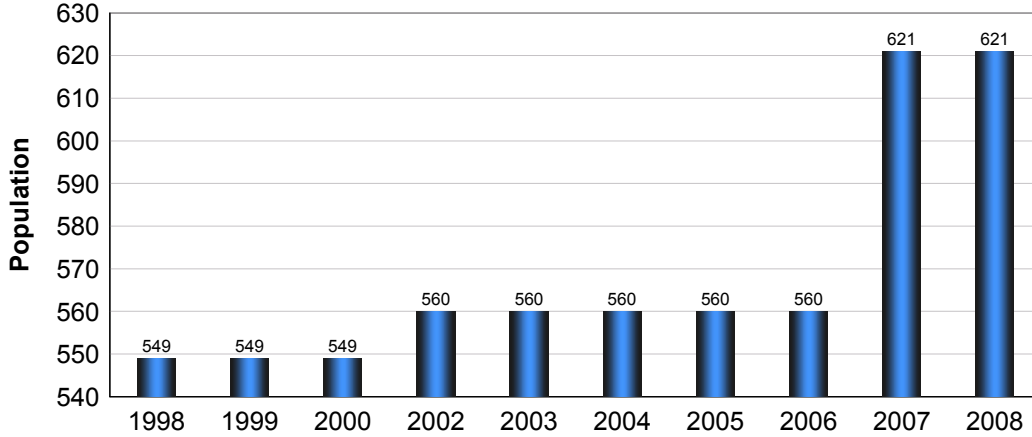
Disclaimer: Information in this profile has been provided from a variety of external sources. AlbertaFirst.com Ltd. provides this template, and each community posts their own content within the template. If you find inaccuracies or information you feel needs changing, please contact the community directly. Although every effort has been made to ensure the accuracy, currency and reliability of the content and data, AlbertaFirst.com Ltd. accepts no responsibility in this regard.

©AlbertaFirst.com Ltd., 2010.

A chart or table in this Profile may be blank. This will occur if there was no data available for that community for the specified time period

Municipal Population

Total Population - Warburg

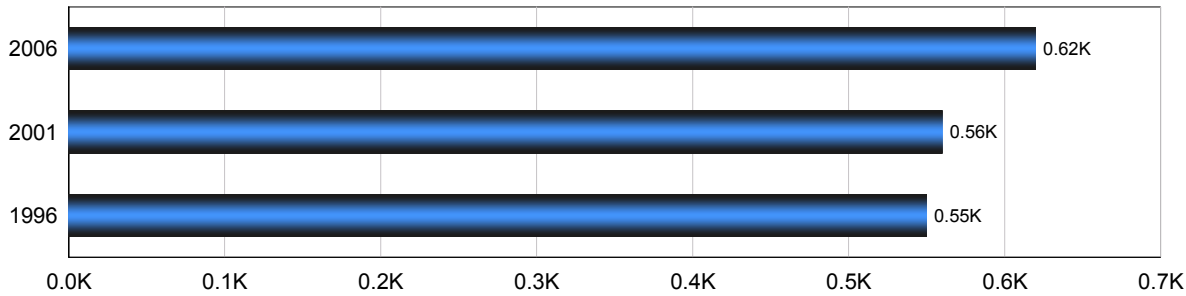


Year	Community Growth	Alberta Growth
2008	0.00%	2.37%
2007	10.89%	3.39%
2006	0.00%	1.95%
2005	0.00%	3.91%
2004	0.00%	0.95%
2003	0.00%	1.34%
2001	2.00%	4.02%
2000	0.00%	2.15%
1999	0.00%	3.24%
1998	0.00%	1.33%

Source: Statistics Canada 2007.
 Warburg, Alberta. 2006 Community Profiles. 2006 Census.
 Statistics Canada Catalogue no. 92-591-XWE. Ottawa. Released March 13, 2007.

Population

Total Population - Warburg

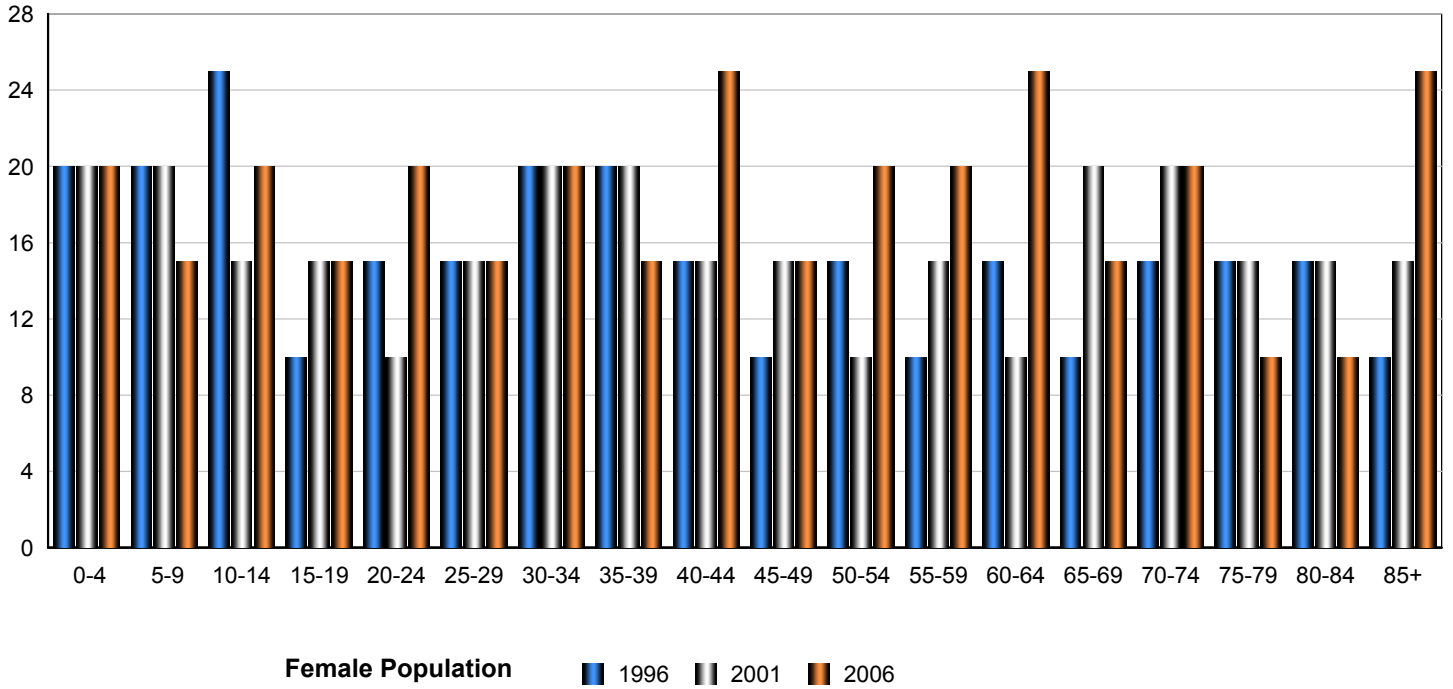


Census Year	Total Population	% Change
2006	620	10.90%
2001	560	2.00%
1996	550	7.00%

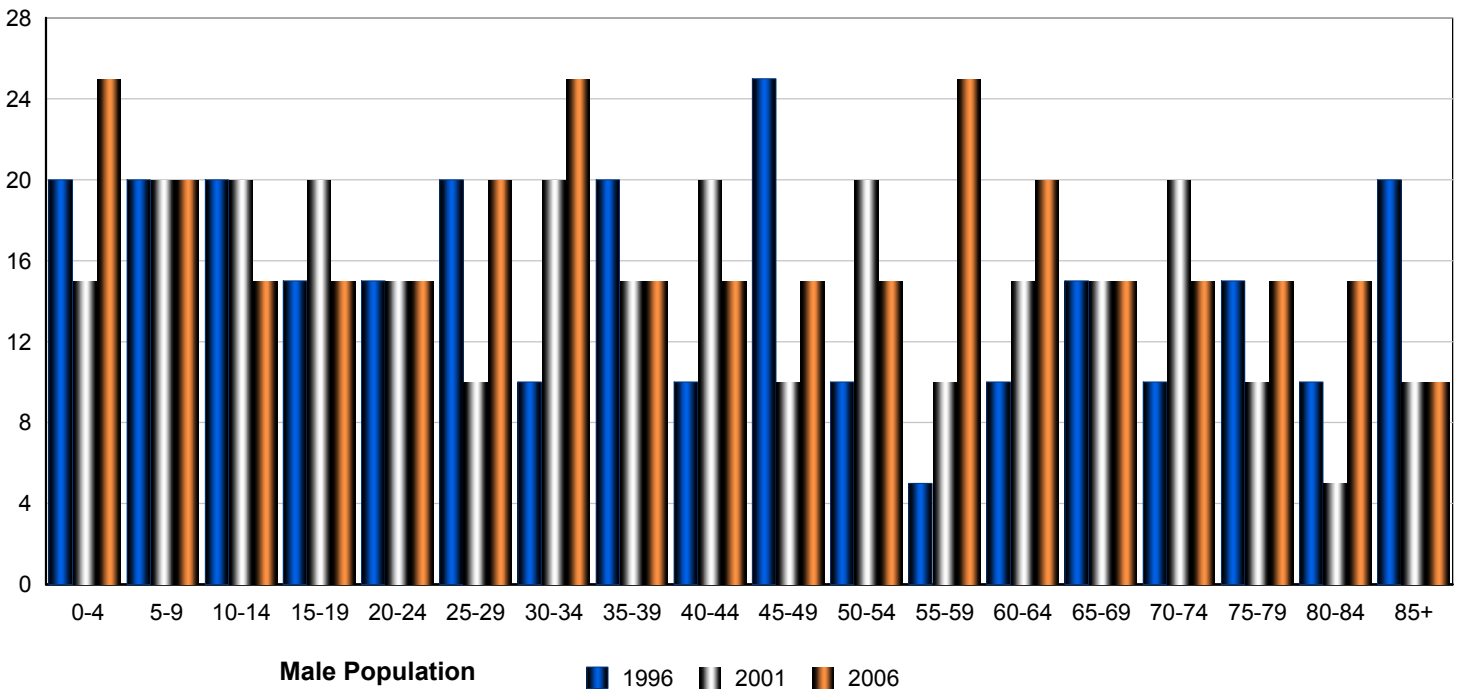
Source: Statistics Canada 2007.
 Warburg, Alberta. 2006 Community Profiles. 2006 Census.
 Statistics Canada Catalogue no. 92-591-XWE. Ottawa. Released March 13, 2007.

Total Population by Gender and Age - Warburg

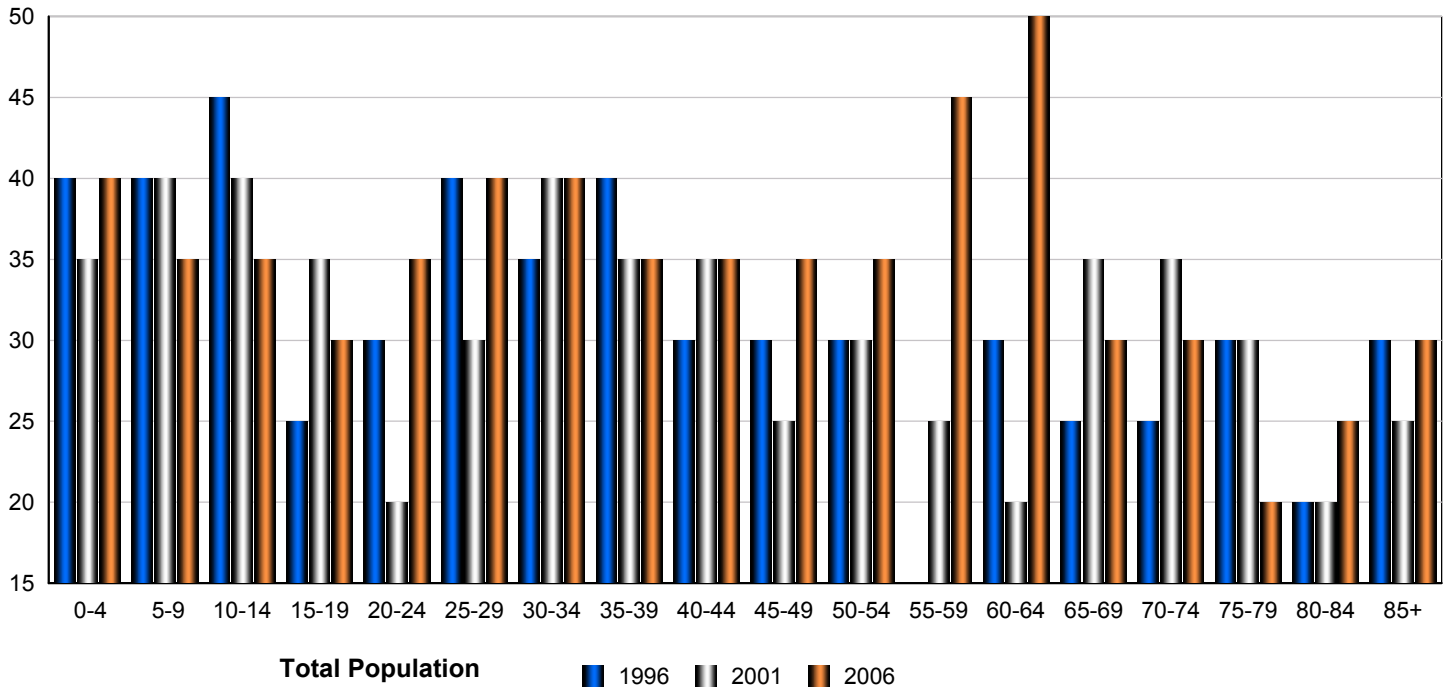
Census Population by Gender - Warburg



Census Population by Gender - Warburg



Census Population by Gender - Warburg



	Male			Female			Total		
	2006	2001	1996	2006	2001	1996	2006	2001	1996
0-4	25	15	20	20	20	20	45	35	40
5-9	20	20	20	15	20	20	35	40	40
10-14	15	20	20	20	15	25	35	35	45
15-19	15	20	15	15	15	10	30	35	25
20-24	15	15	15	20	10	15	35	25	30
25-29	20	10	20	15	15	15	35	25	35
30-34	25	20	10	20	20	20	45	40	30
35-39	15	15	20	15	20	20	30	35	40
40-44	15	20	10	25	15	15	40	35	25
45-49	15	10	25	15	15	10	30	25	35
50-54	15	20	10	20	10	15	35	30	25
55-59	25	10	5	20	15	10	45	25	15
60-64	20	15	10	25	10	15	45	25	25
65-69	15	15	15	15	20	10	30	35	25
70-74	15	20	10	20	20	15	35	40	25
75-79	15	10	15	10	15	15	25	25	30
80-84	15	5	10	10	15	15	25	20	25
85-89	10	10	20	25	15	10	35	25	30
Total	310	270	270	325	285	275	635	555	545

Source: Statistics Canada 2007.
 Warburg, Alberta. 2006 Community Profiles. 2006 Census.
 Statistics Canada Catalogue no. 92-591-XWE. Ottawa. Released March 13, 2007.

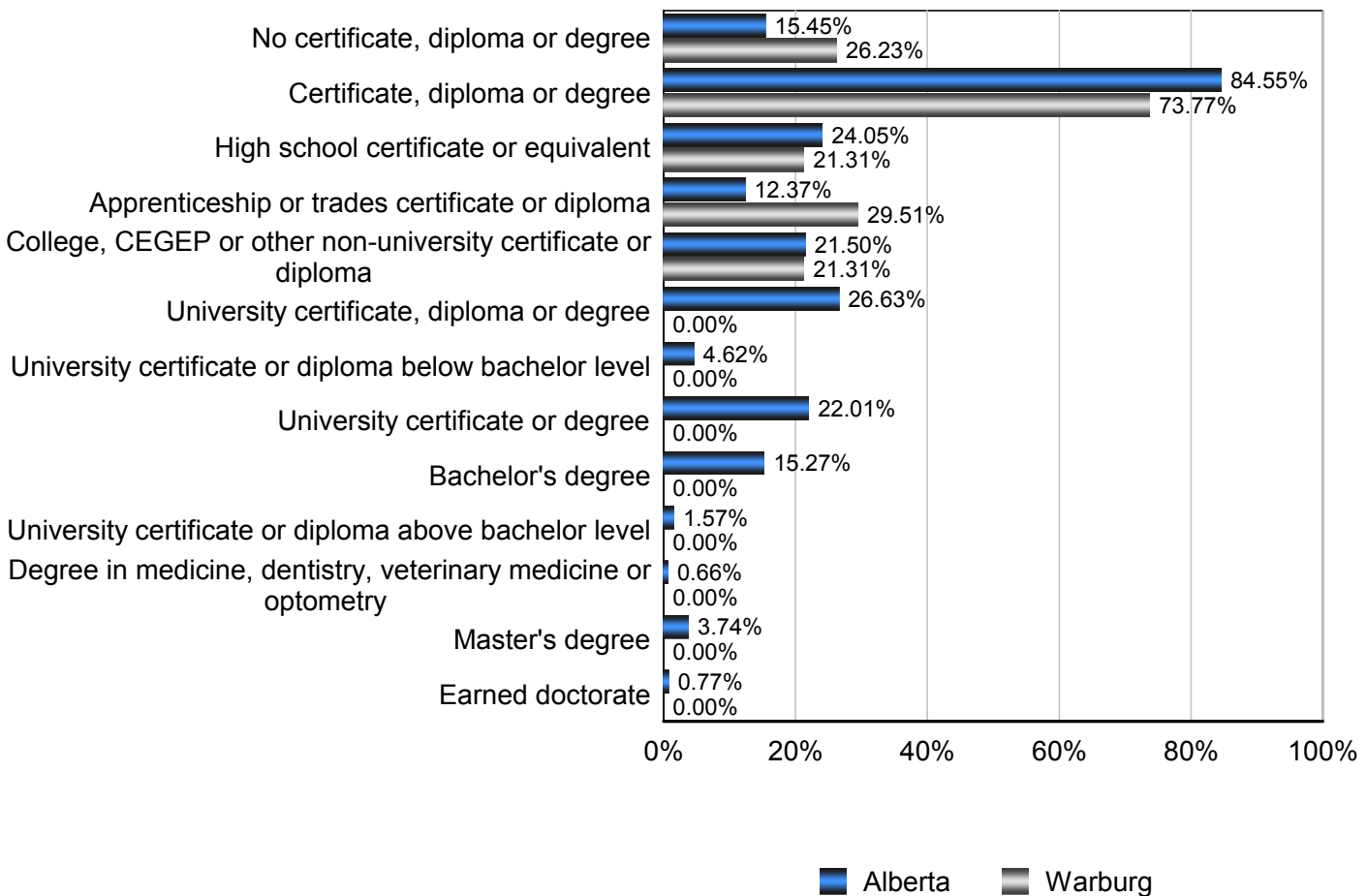
Education Statistics

Highest Level of Schooling, Population Aged 25-64 - Warburg (2006)

% of Population Aged 25-64

Highest Level of Schooling	Warburg	Alberta
No certificate, diploma or degree	26.23%	15.45%
Certificate, diploma or degree	73.77%	84.55%
High school certificate or equivalent	21.31%	24.05%
Apprenticeship or trades certificate or diploma	29.51%	12.37%
College, CEGEP or other non-university certificate or diploma	21.31%	21.50%
University certificate, diploma or degree	0.00%	26.63%
University certificate or diploma below bachelor level	0.00%	4.62%
University certificate or degree	0.00%	22.01%
Bachelor's degree	0.00%	15.27%
University certificate or diploma above bachelor level	0.00%	1.57%
Degree in medicine, dentistry, veterinary medicine or optometry	0.00%	0.66%
Master's degree	0.00%	3.74%
Earned doctorate	0.00%	0.77%

Amount by Which the Highest Level of Schooling - Warburg vs Provincial Average (2006)

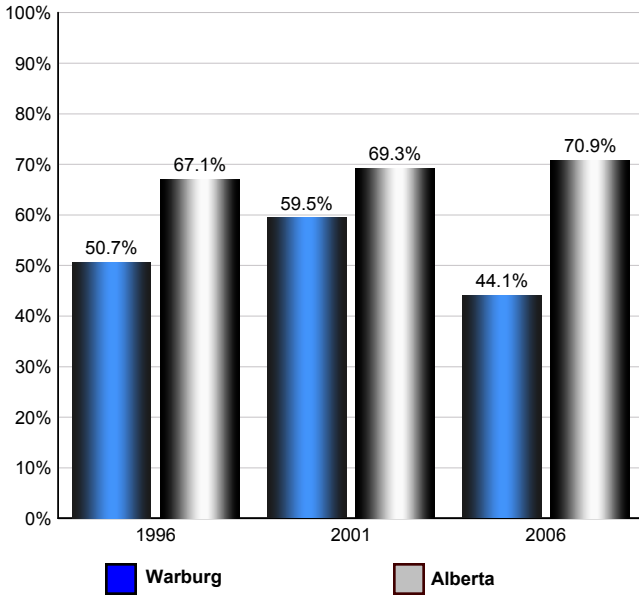


Source: Statistics Canada 2007.
 Alberta, Alberta. 2006 Community Profiles. 2006 Census.
 Statistics Canada Catalogue no. 92-591-XWE. Ottawa. Released March 13, 2007.

Labour Force

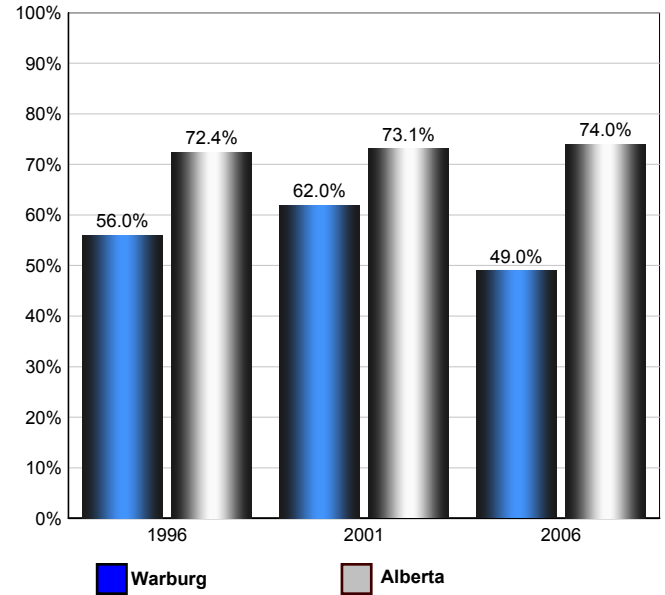
Annual Labour Force Activity Rates - Warburg vs Alberta

Employment Rate



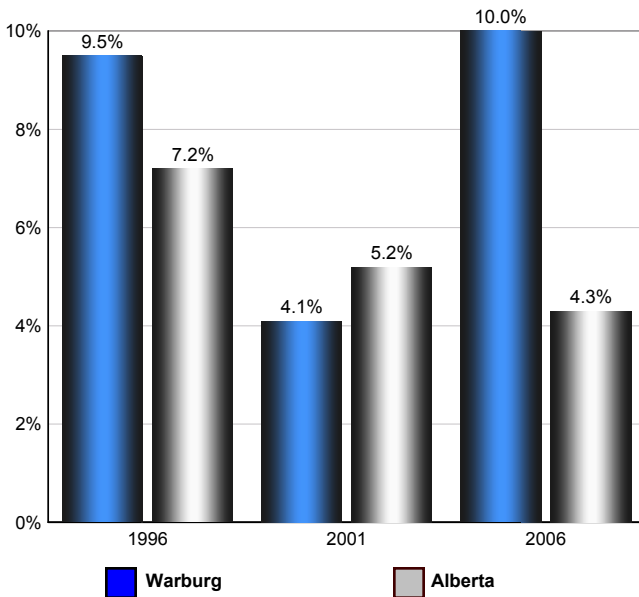
The Employment Rate is calculated by dividing the total employed by the total population 15 and over

Participation Rate



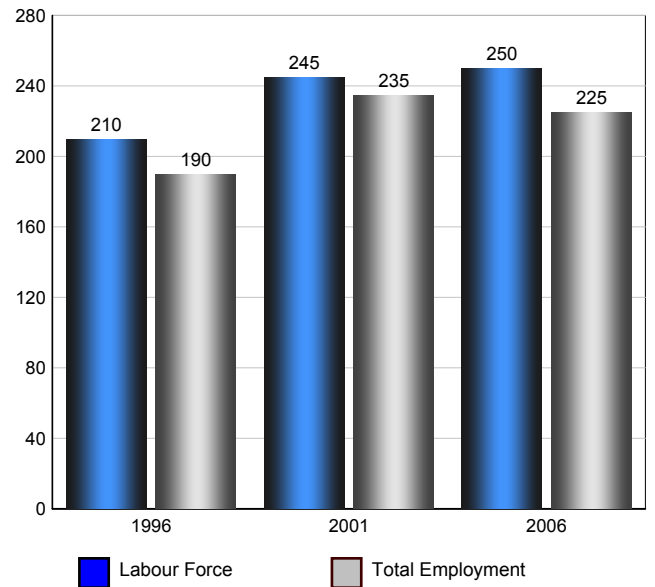
The Participation rate is calculated by summing together the number employed and unemployed and dividing the result by the total population aged 15 and over

Unemployment Rate



The Unemployment rate is calculated by dividing the total number of persons in the labour force that are reported as being unemployed by the total labour force.

Warburg Labour Force and Total Employment (Age 15+)



Source: Statistics Canada 2007. Warburg, Alberta. 2006 Community Profiles. 2006 Census. Statistics Canada Catalogue no. 92-591-XWE. Ottawa. Released March 13, 2007.

Labour Force Age 15+ - Warburg (2006)

Industry by Gender

Industry	Males	Females	Total
Agriculture, Forestry, Fishing and Hunting	0	0	0
Mining, Oil and Gas Extraction	55	10	65
Utilities	0	0	0
Construction	20	0	20
Manufacturing	10	0	10
Wholesale Trade	10	0	10
Retail Trade	0	15	15
Transportation and Warehousing	10	0	10
Information and Cultural Industries	0	0	0
Finance and Insurance	0	0	0
Real Estate, Rental and Leasing	0	0	0
Professional, Scientific and Technical Services	10	0	10
Management of Companies and Enterprises	0	0	0
Administrative and Support, Waste Management and Remediation Services	0	0	0
Educational services	0	10	10
Health care and social assistance	0	40	40
Arts, Entertainment and Recreation	15	0	15
Accommodation and Food Services	0	15	15
Other Services (except Public Administration)	15	10	25
Public Administration	0	10	10
Total	145	110	255

Source: Statistics Canada 2007.
Warburg, Alberta. 2006 Community Profiles. 2006 Census.
Statistics Canada Catalogue no. 92-591-XWE. Ottawa. Released March 13, 2007.

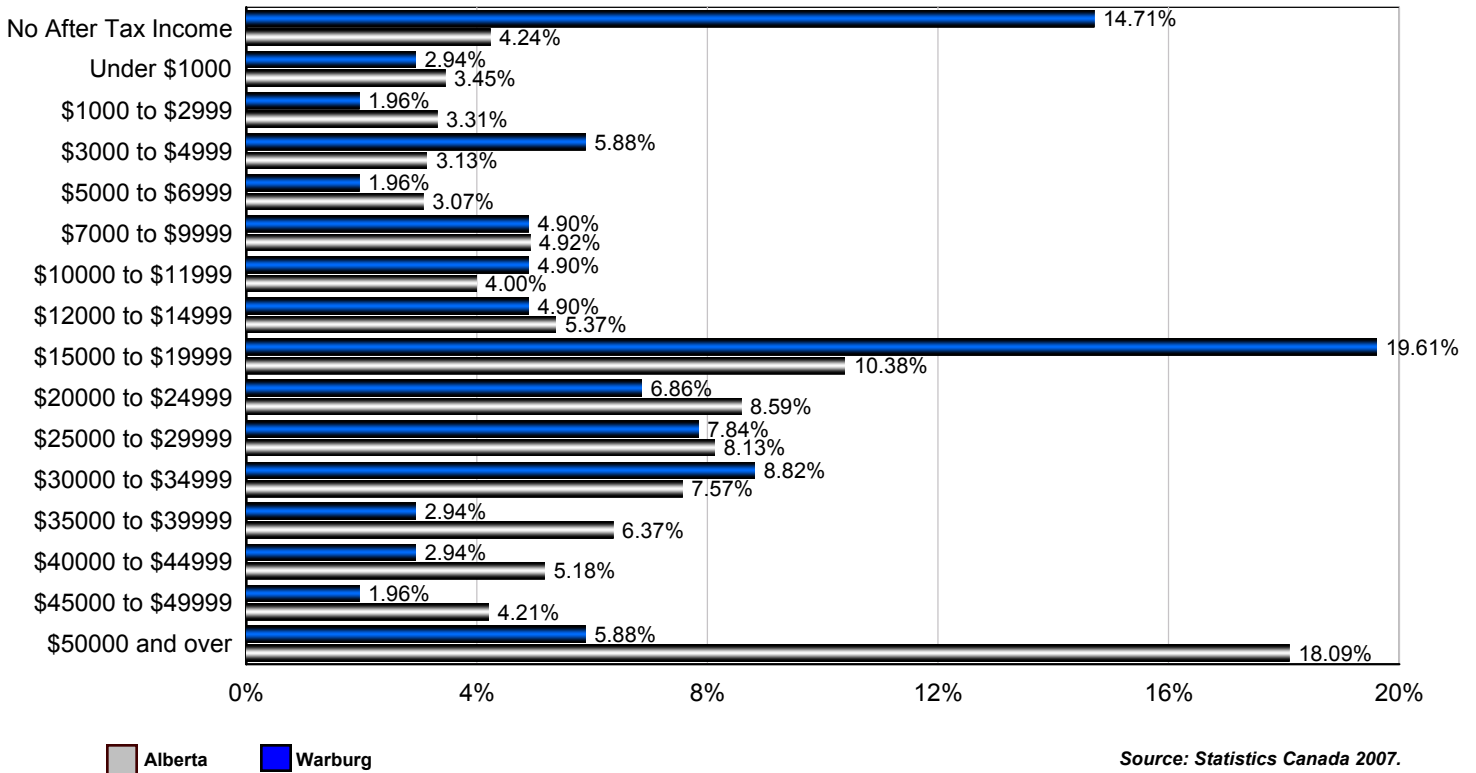
Occupation by Gender

Occupation	Males	Females	Total
Management Occupations	0	15	15
Business, Finance and Administration Occupations	15	15	30
Natural and Applied Sciences and Related Occupations	15	0	15
Health Occupations	0	20	20
Occupations in Social Science, Education, Government Service	0	0	0
Occupations in Art, Culture, Recreation and Sport	10	0	10
Sales and Service Occupations	15	55	70
Trades, Transport and Equipment Operators and Related Occupations	50	0	50
Occupations Unique to Primary	25	0	25
Occupations Unique to Processing, Manufacturing and Utilities	10	0	10
Total	140	105	245

Source: Statistics Canada 2007.
Warburg, Alberta. 2006 Community Profiles. 2006 Census.
Statistics Canada Catalogue no. 92-591-XWE. Ottawa. Released March 13, 2007.

Income

Percent of Population 15+ by Income Bracket - Warburg vs Alberta (2005)



Source: Statistics Canada 2007.
 Warburg, Alberta. 2006 Community Profiles. 2006 Census.
 Statistics Canada Catalogue no. 92-591-XWE. Ottawa. Released March 13, 2007.

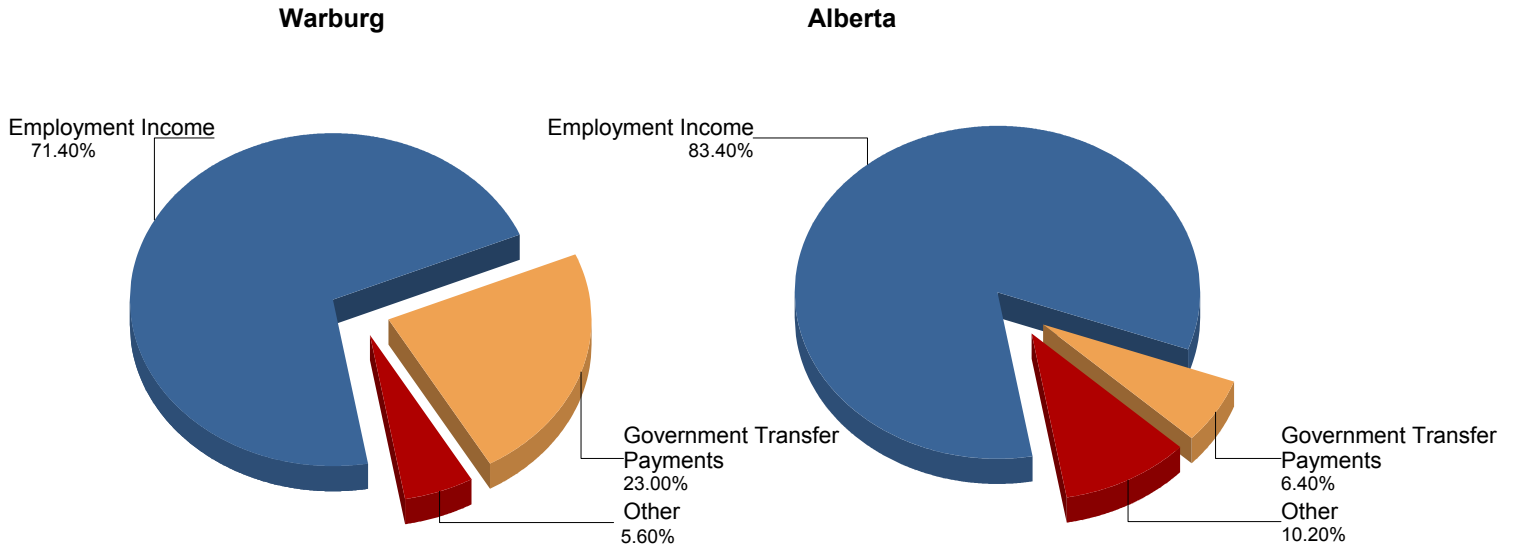
Population 15+ by Total After Tax Income - Warburg (2005)

	Males	Females	Total
Without After-Tax Income	15	55	70
Under \$1,000	10	10	20
\$1,000 to \$2,999	15	0	15
\$3,000 to \$4,999	15	10	25
\$5,000 to \$6,999	0	15	15
\$7,000 to \$9,999	0	30	30
\$10,000 to \$11,999	10	20	30
\$12,000 to \$14,999	0	25	25
\$15,000 to \$19,999	50	45	95
\$20,000 to \$24,999	20	10	30
\$25,000 to \$29,999	15	25	40
\$30,000 to \$34,999	35	10	45
\$35,000 to \$39,999	0	0	0
\$40,000 to \$44,999	15	0	15
\$45,000 to \$49,999	0	0	0
\$50,000 and over	30	0	30
Total	240	265	510

Due to rounding consolidating the shown income brackets may lead to errors. Such errors would be most pronounced for small communities.

Source: Statistics Canada 2007.
 Warburg, Alberta. 2006 Community Profiles. 2006 Census.
 Statistics Canada Catalogue no. 92-591-XWE. Ottawa. Released March 13, 2007.

Composition of Family Income for Economic Families - Warburg vs Alberta (2005)



Economic family total income - The total income of an economic family is the sum of the total incomes of all members of that family.

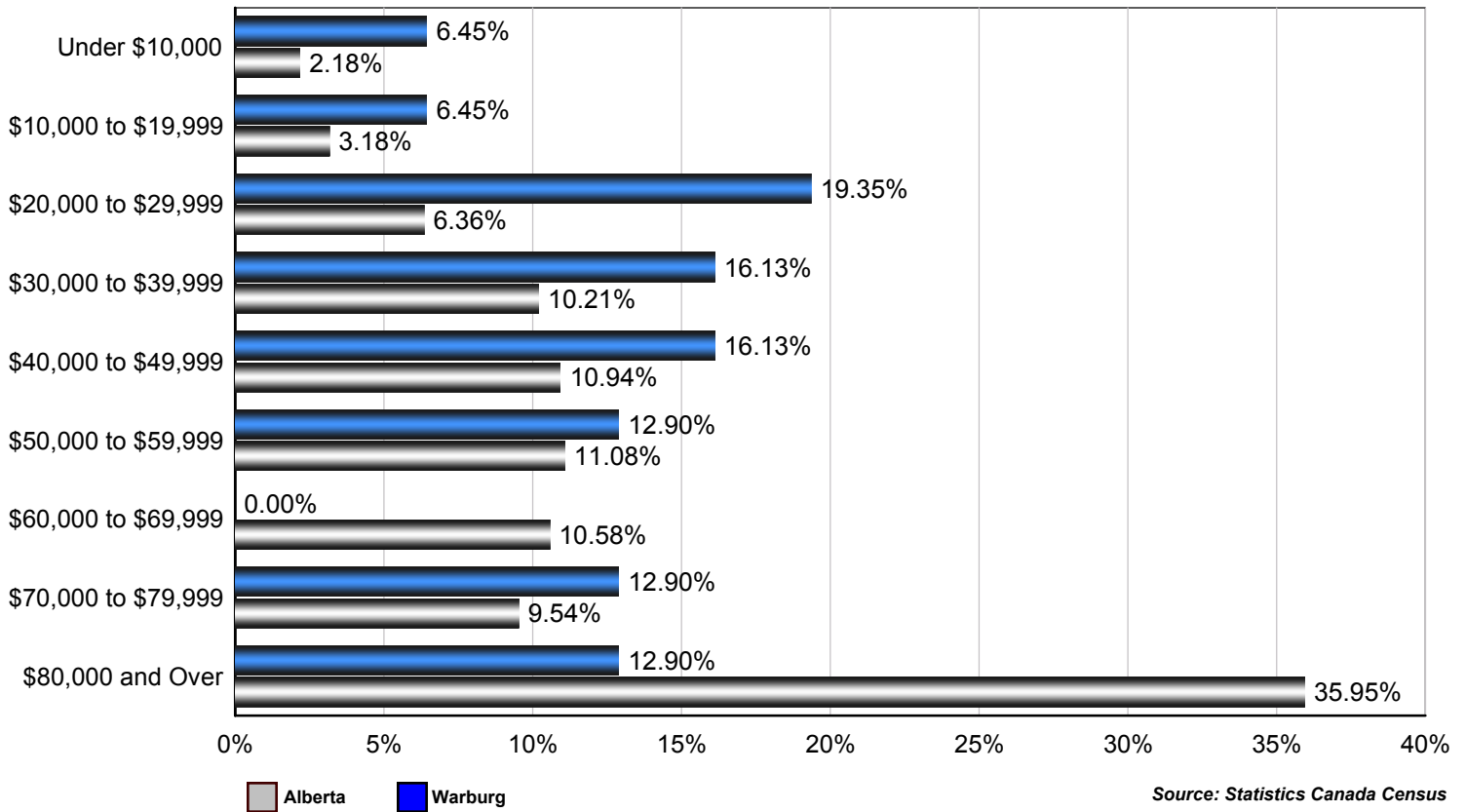
Source: Statistics Canada 2007.
 Warburg, Alberta. 2006 Community Profiles. 2006 Census.
 Statistics Canada Catalogue no. 92-591-XWE. Ottawa. Released March 13, 2007.

Population 15+ With Employment Earnings - Warburg (2005)

	Males	Females	Total
Earnings - As a % of total Earnings	59%	57%	58%
Median Employment Earnings	\$34,024	\$7,748	\$16,766
Average Employment Earnings	\$38,231	\$13,453	\$25,412

Source: Statistics Canada 2007.
 Warburg, Alberta. 2006 Community Profiles. 2006 Census.
 Statistics Canada Catalogue no. 92-591-XWE. Ottawa. Released March 13, 2007.

Percent of Total Economic Families by After-tax Income Brackets - Warburg vs Alberta (2005)



Number of Economic Families by After-tax Income Brackets - Warburg (2005)

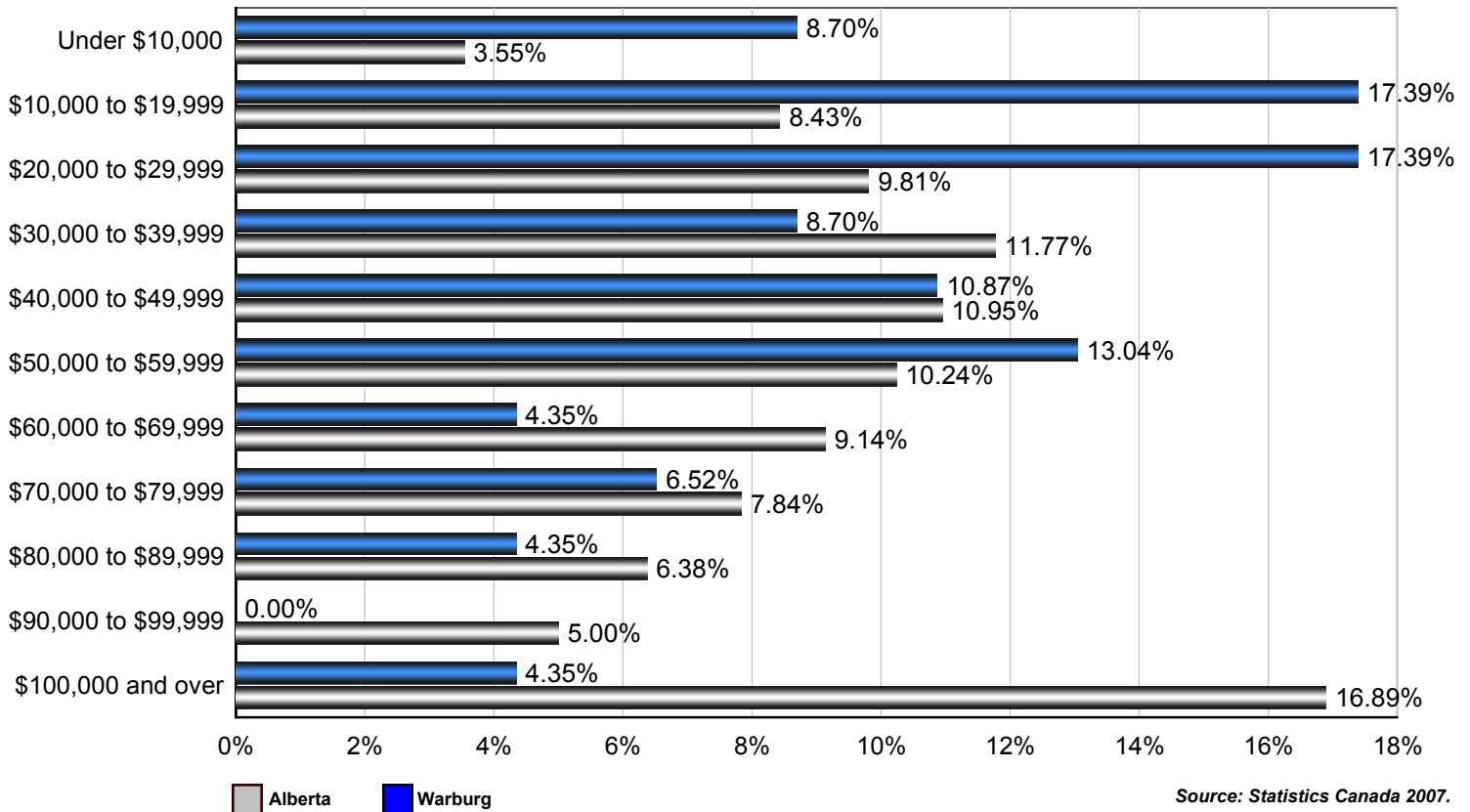
Income Bracket	Number of Families
Under \$10,000	10
\$10,000 to \$19,999	10
\$20,000 to \$29,999	30
\$30,000 to \$39,999	25
\$40,000 to \$49,999	25
\$50,000 to \$59,999	20
\$60,000 to \$69,999	0
\$70,000 to \$79,999	20
\$80,000 and over	20
Total	155

Family Income	
Median After-Tax Family Income	\$44,771
Average After-Tax Family Income	\$50,272

Due to rounding consolidating the shown income brackets may lead to errors. Such errors would be most pronounced for small communities.

Source: Statistics Canada 2007.
 Warburg, Alberta. 2006 Community Profiles. 2006 Census.
 Statistics Canada Catalogue no. 92-591-XWE. Ottawa. Released March 13, 2007.

Percent of Total Private Households by After-tax Income Brackets - Warburg vs Alberta (2005)



Source: Statistics Canada 2007.
 Warburg, Alberta. 2006 Community Profiles. 2006 Census.
 Statistics Canada Catalogue no. 92-591-XWE. Ottawa. Released March 13, 2007.

Number of Private Households by After-tax Income Brackets - Warburg (2005)

Income Bracket	Number of Families
Under \$10,000	20
\$10,000 to \$19,999	40
\$20,000 to \$29,999	40
\$30,000 to \$39,999	20
\$40,000 to \$49,999	25
\$50,000 to \$59,999	30
\$60,000 to \$69,999	10
\$70,000 to \$79,999	15
\$80,000 to \$89,999	10
\$90,000 to \$99,999	0
\$100,000 and Over	10
Total	230

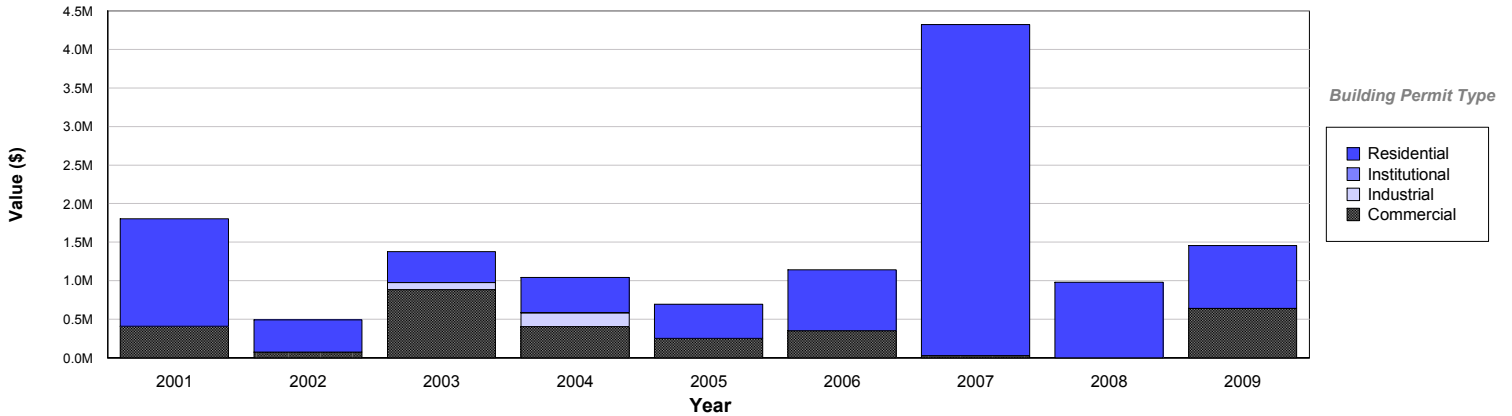
Family Income	
Median After-Tax Family Income	\$38,027
Average After-Tax Family Income	\$41,338

Due to rounding consolidating the shown income brackets may lead to errors. Such errors would be most pronounced for small communities.

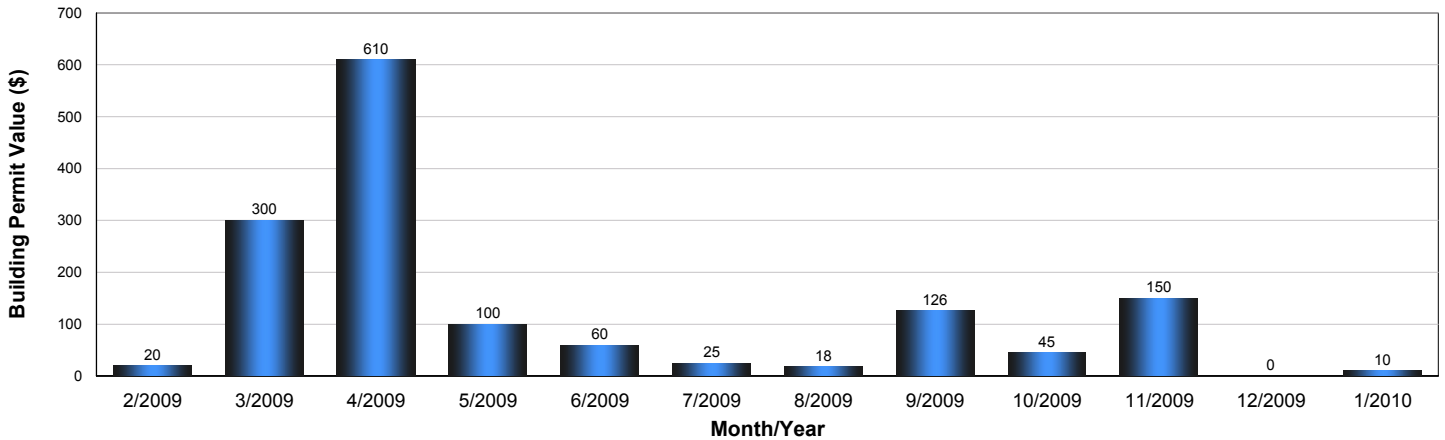
Source: Statistics Canada Census

Building Permits

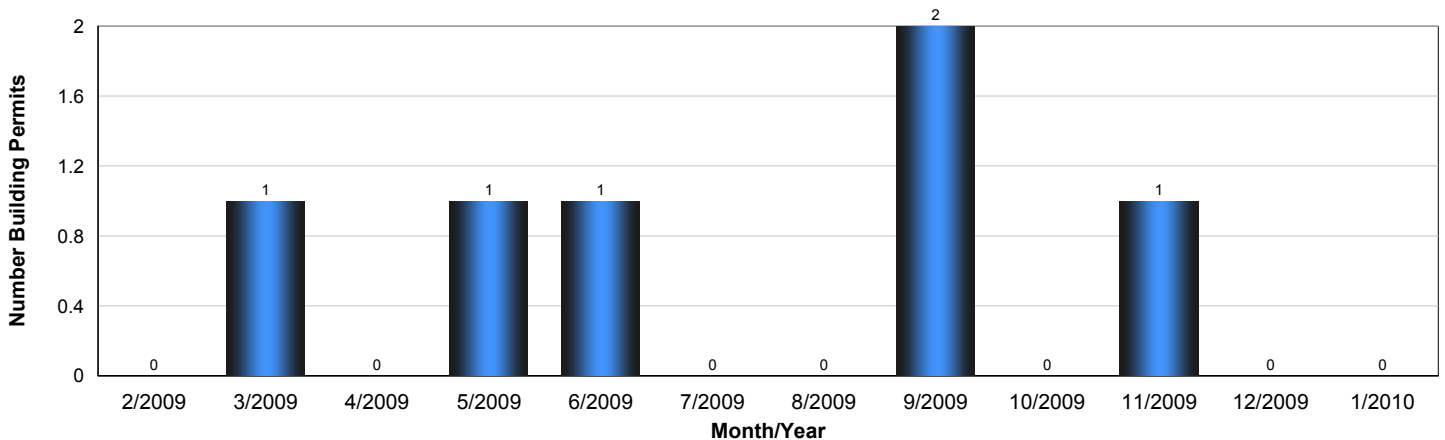
Value of Building Permits - Warburg



Year	Residential	Industrial	Commercial	Institutional	Total
2009	\$814,000	\$0	\$640,000	\$0	\$1,454,000
2008	\$981,000	\$0	\$0	\$0	\$981,000
2007	\$4,298,000	\$0	\$27,000	\$0	\$4,325,000
2006	\$792,000	\$0	\$350,000	\$0	\$1,142,000
2005	\$444,000	\$0	\$250,000	\$0	\$694,000
2004	\$456,000	\$177,000	\$405,000	\$3,000	\$1,041,000
2003	\$402,000	\$93,000	\$883,000	\$0	\$1,378,000
2002	\$415,000	\$0	\$75,000	\$0	\$490,000
2001	\$1,395,000	\$0	\$409,000	\$0	\$1,804,000



Number of Building Permits - Warburg

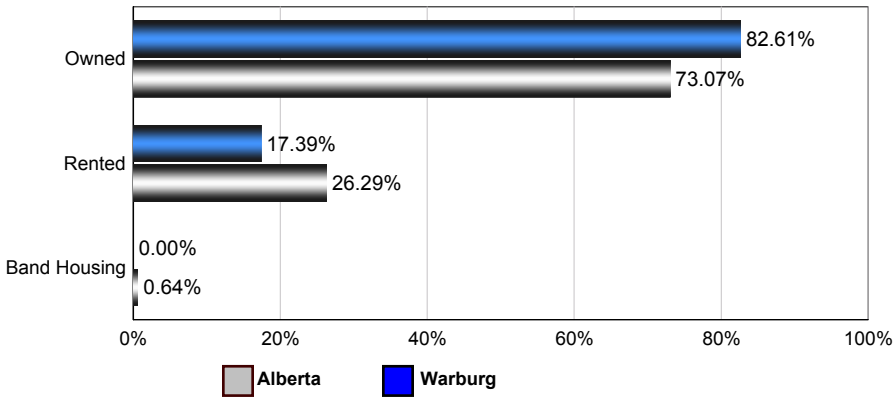


Source: Statistics Canada, Building Permits / Permis de bâtir, Publication 64-001-XWF, 2000 - 2009.

Dwellings

Number of Occupied Private Dwellings by Ownership - Warburg

Warburg vs Alberta (2006)



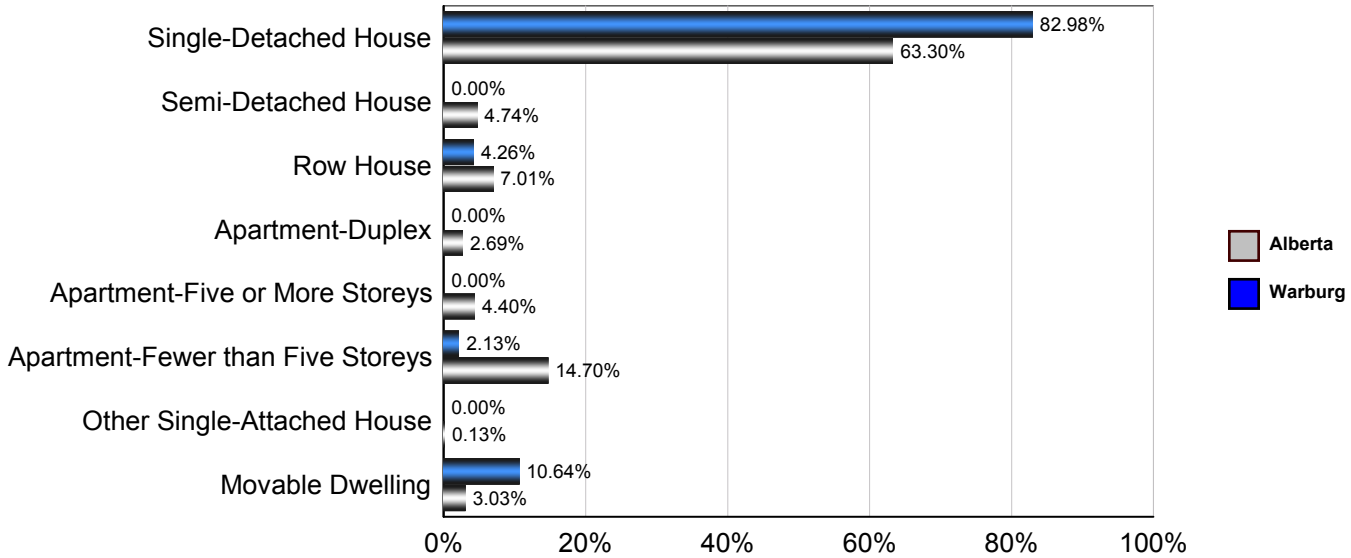
Warburg

	1996	2001	2006
Owned	120	135	190
Rented	70	60	40
Band Housing	0	0	0
Total	190	195	230

Source: Statistics Canada 2007.
Warburg, Alberta. 2006 Community Profiles. 2006 Census.
Statistics Canada Catalogue no. 92-591-XWE. Ottawa. Released March 13, 2007.

Number of Occupied Private Dwellings by Structural Type - Warburg

Warburg vs Alberta (2006)



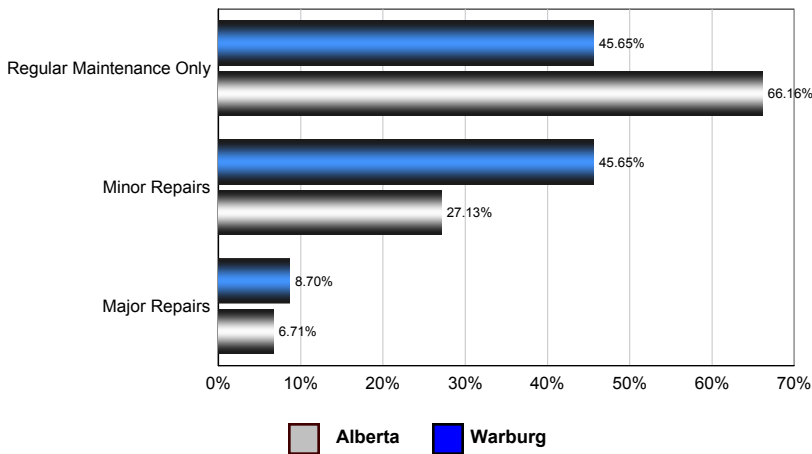
Warburg

	1996	2001	2006
Single-Detached House	180	145	195
Semi-Detached House	0	5	0
Row House	0	0	0
Apartment - Duplex	0	5	0
Apartment - Five or More Storeys	0	0	0
Apartment - Fewer than Five Storeys	10	0	5
Other Single-Attached House	0	0	0
Movable Dwelling	0	20	25
Total	190	175	225

Source: Statistics Canada 2007.
Warburg, Alberta. 2006 Community Profiles. 2006 Census.
Statistics Canada Catalogue no. 92-591-XWE. Ottawa. Released March 13, 2007.

Number of Occupied Private Dwellings by the Condition of Dwelling - Warburg

Warburg vs Alberta (2006)



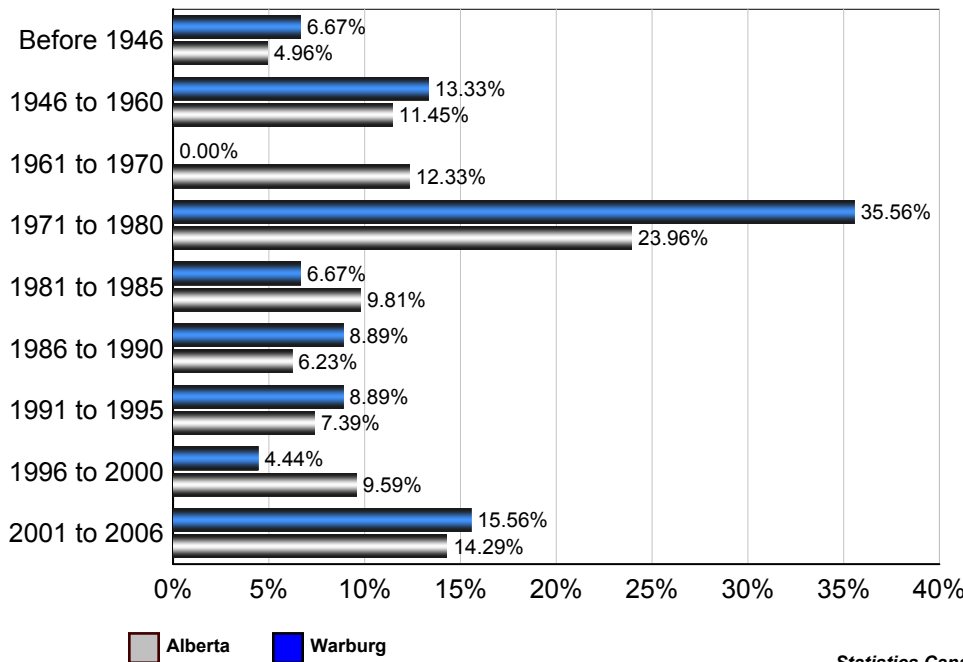
Warburg

	1996	2001	2006
Regular Maintenance Only	90	75	105
Minor repairs	70	85	105
Major repairs	30	40	20
Total	190	200	230

Source: Statistics Canada 2007.
 Warburg, Alberta. 2006 Community Profiles. 2006 Census.
 Statistics Canada Catalogue no. 92-591-XWE. Ottawa. Released March 13, 2007.

Number of Occupied Private Dwellings by Period of Construction - Warburg

Warburg vs Alberta (2006)



Warburg

	2006
Before 1946	15
1946 to 1960	30
1961 to 1970	0
1971 to 1980	80
1981 to 1985	15
1986 to 1990	20
1991 to 1995	20
1996 to 2000	10
2001 to 2006	35
Total	225

Source: Statistics Canada 2007.
 Warburg, Alberta. 2006 Community Profiles. 2006 Census.
 Statistics Canada Catalogue no. 92-591-XWE. Ottawa. Released March 13, 2007.

