

## Wood Buffalo National Park, Improvement District No. 24

Google Map



Disclaimer: Information in this profile has been provided from a variety of external sources. AlbertaFirst.com Ltd. provides this template, and each community posts their own content within the template. If you find inaccuracies or information you feel needs changing, please contact the community directly. Although every effort has been made to ensure the accuracy, currency and reliability of the content and data, AlbertaFirst.com Ltd. accepts no responsibility in this regard.

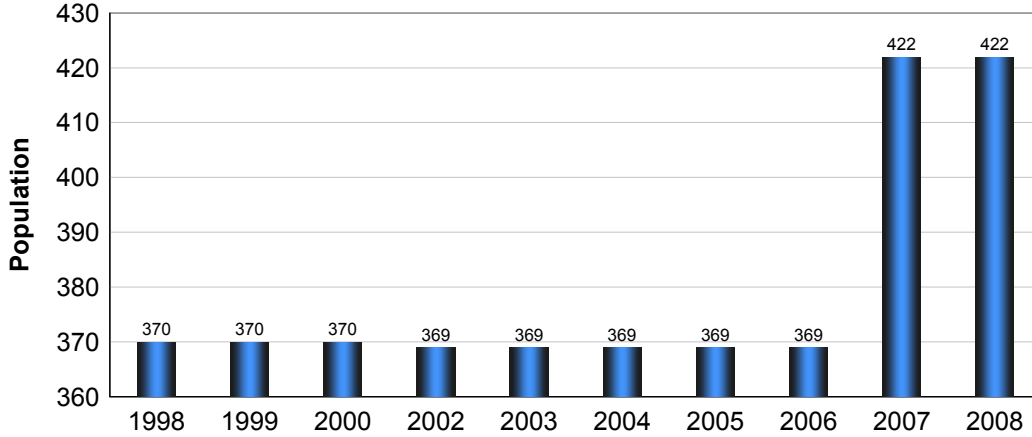
©AlbertaFirst.com Ltd., 2010.

# Wood Buffalo National Park, Improvement District N

A chart or table in this Profile may be blank. This will occur if there was no data available for that community for the specified time period

## Municipal Population

### Total Population - Wood Buffalo National Park, Improvement District No. 24

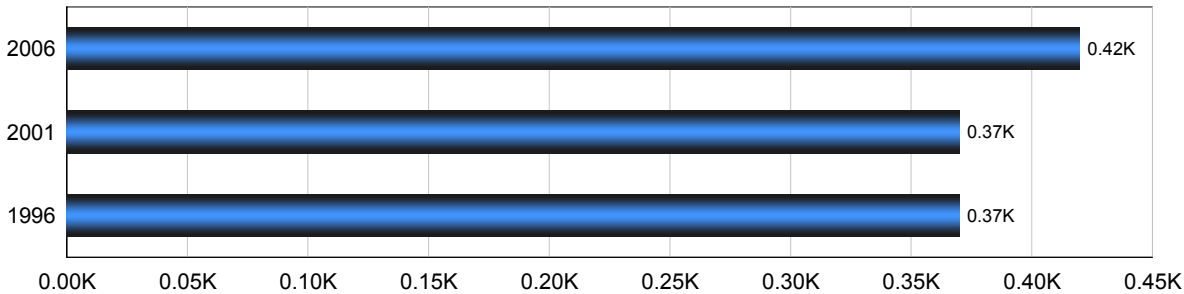


Year	Community Growth	Alberta Growth
2008	0.00%	2.37%
2007	14.36%	3.39%
2006	0.00%	1.95%
2005	0.00%	3.91%
2004	0.00%	0.95%
2003	0.00%	1.34%
2001	(0.27)%	4.02%
2000	0.00%	2.15%
1999	0.00%	3.24%
1998	0.00%	1.33%

Source: Statistics Canada 2007.  
Wood Buffalo National Park, Improvement District No. 24, Alberta. 2006 Community Profiles. 2006 Census.  
Statistics Canada Catalogue no. 92-591-XWE. Ottawa. Released March 13, 2007.

## Population

### Total Population - Wood Buffalo National Park, Improvement District No. 24



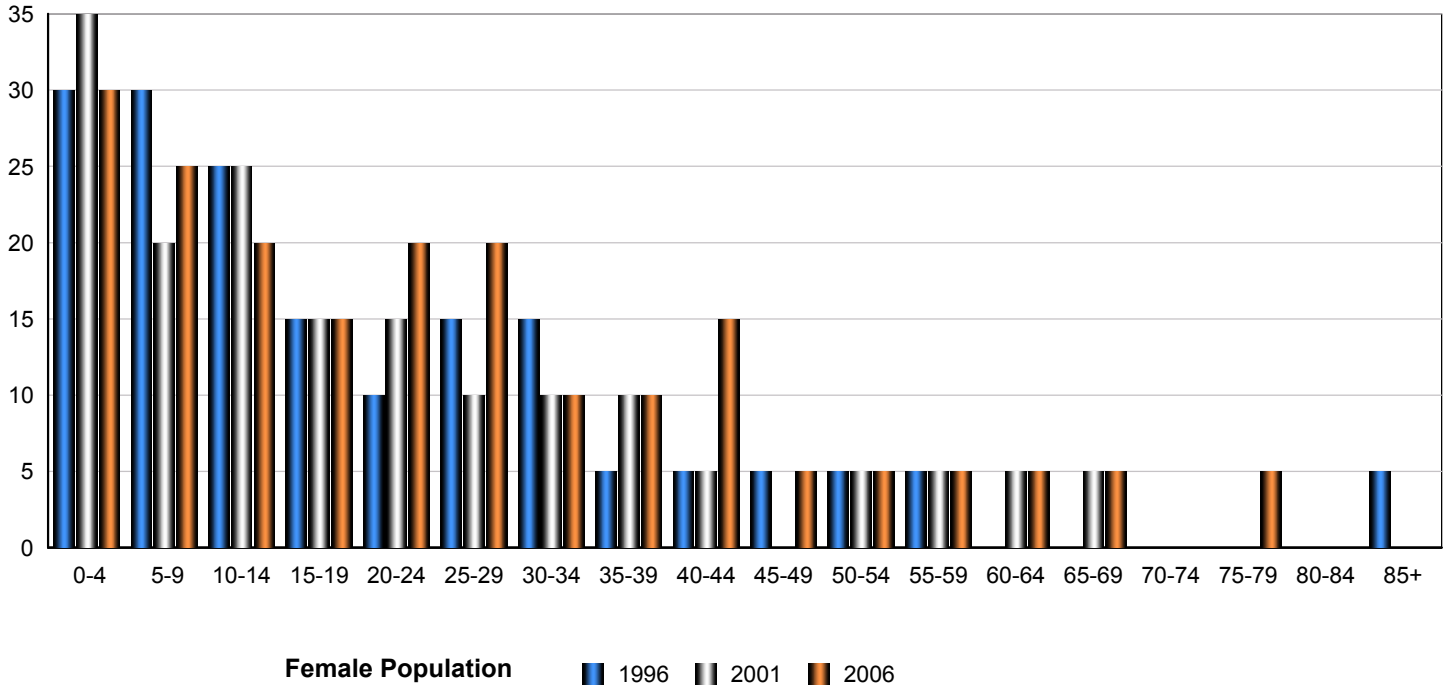
Census Year	Total Population	% Change
2006	420	14.40%
2001	370	0.30%
1996	370	29.40%

Source: Statistics Canada 2007.  
Wood Buffalo National Park, Improvement District No. 24, Alberta. 2006 Community Profiles. 2006 Census.  
Statistics Canada Catalogue no. 92-591-XWE. Ottawa. Released March 13, 2007.

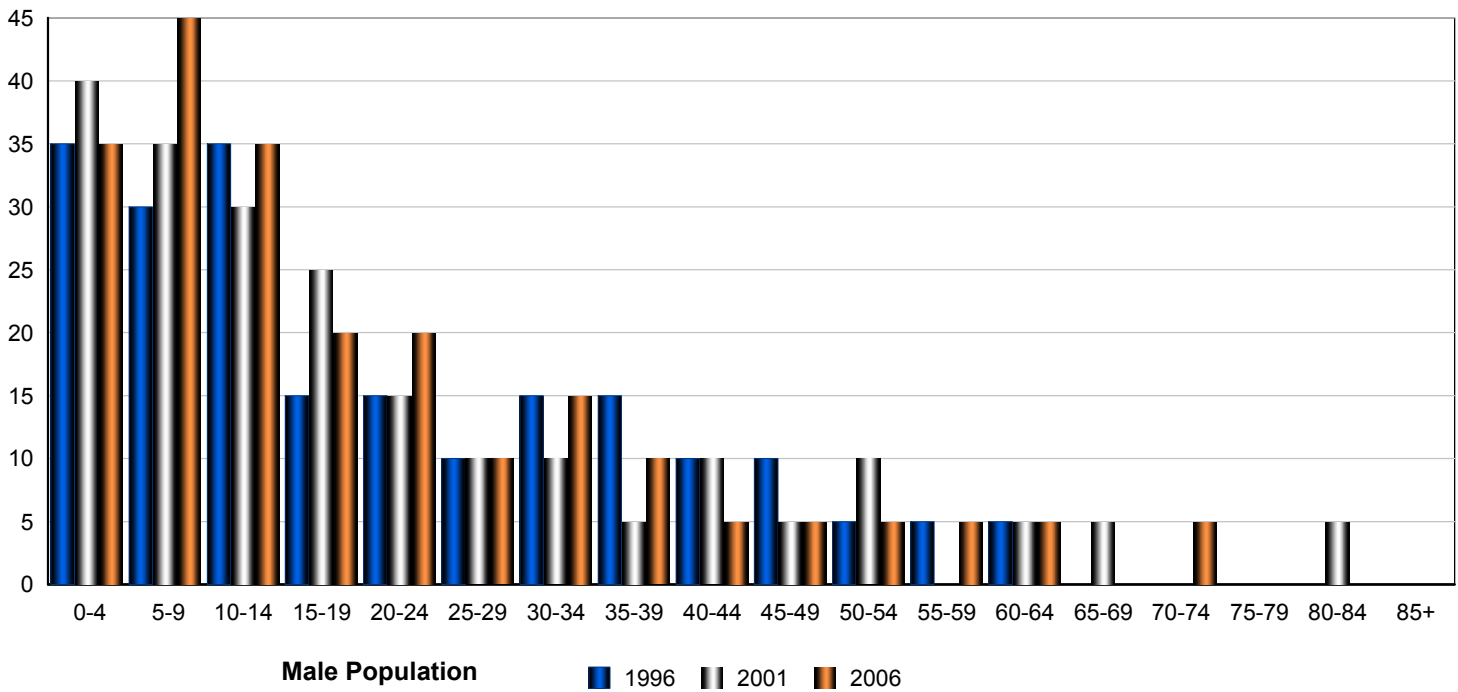
# Wood Buffalo National Park, Improvement District N

## Total Population by Gender and Age - Wood Buffalo National Park, Improvement District No. 24

### Census Population by Gender - Wood Buffalo National Park, Improvement District No. 24

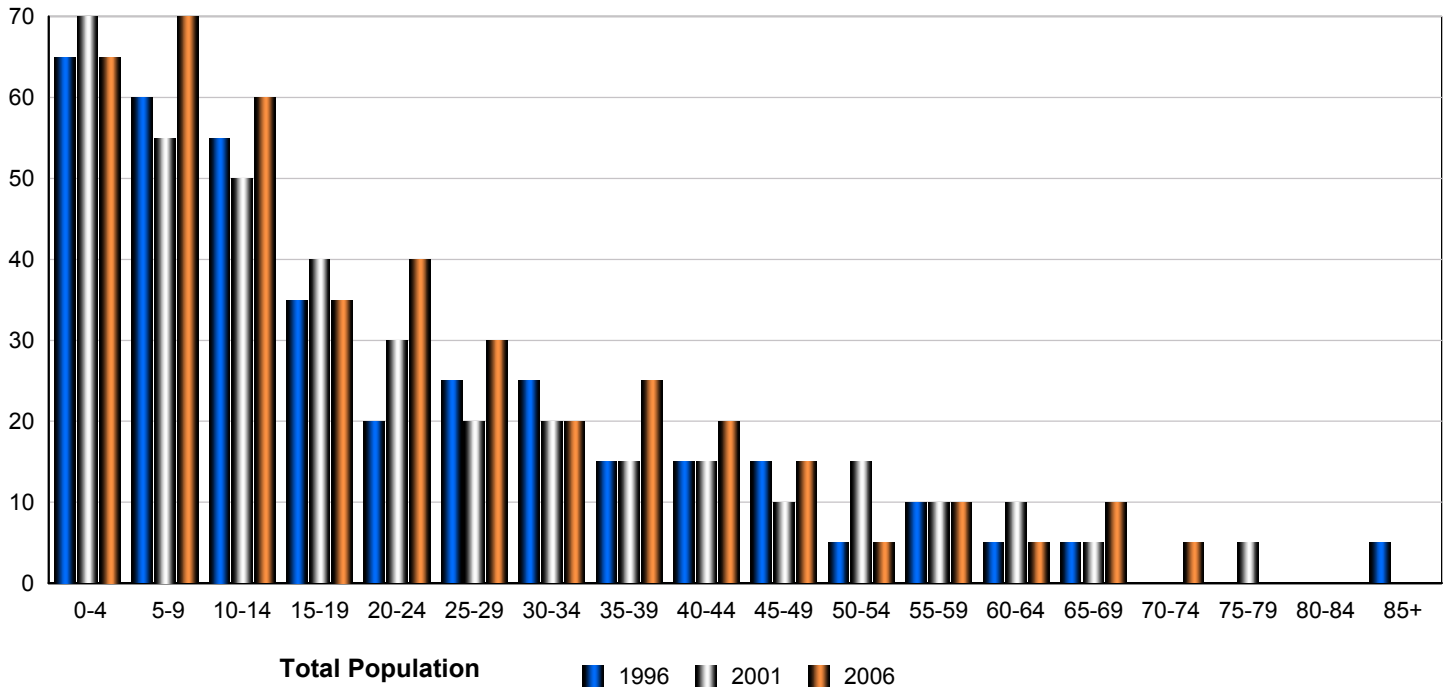


### Census Population by Gender - Wood Buffalo National Park, Improvement District No. 24



# Wood Buffalo National Park, Improvement District N

## Census Population by Gender - Wood Buffalo National Park, Improvement District No. 24



	Male			Female			Total		
	2006	2001	1996	2006	2001	1996	2006	2001	1996
0-4	35	40	35	30	35	30	65	75	65
5-9	45	35	30	25	20	30	70	55	60
10-14	35	30	35	20	25	25	55	55	60
15-19	20	25	15	15	15	15	35	40	30
20-24	20	15	15	20	15	10	40	30	25
25-29	10	10	10	20	10	15	30	20	25
30-34	15	10	15	10	10	15	25	20	30
35-39	10	5	15	10	10	5	20	15	20
40-44	5	10	10	15	5	5	20	15	15
45-49	5	5	10	5	0	5	10	5	15
50-54	5	10	5	5	5	5	10	15	10
55-59	5	0	5	5	5	5	10	5	10
60-64	5	5	5	5	5	0	10	10	5
65-69	0	5	0	5	5	0	5	10	0
70-74	5	0	0	0	0	0	5	0	0
75-79	0	0	0	5	0	0	5	0	0
80-84	0	5	0	0	0	0	0	5	0
85-89	0	0	0	0	0	5	0	0	5
<b>Total</b>	<b>220</b>	<b>210</b>	<b>205</b>	<b>195</b>	<b>165</b>	<b>170</b>	<b>415</b>	<b>375</b>	<b>375</b>

Source: Statistics Canada 2007.  
 Wood Buffalo National Park, Improvement District No. 24, Alberta. 2006 Community Profiles. 2006 Census.  
 Statistics Canada Catalogue no. 92-591-XWE. Ottawa. Released March 13, 2007.



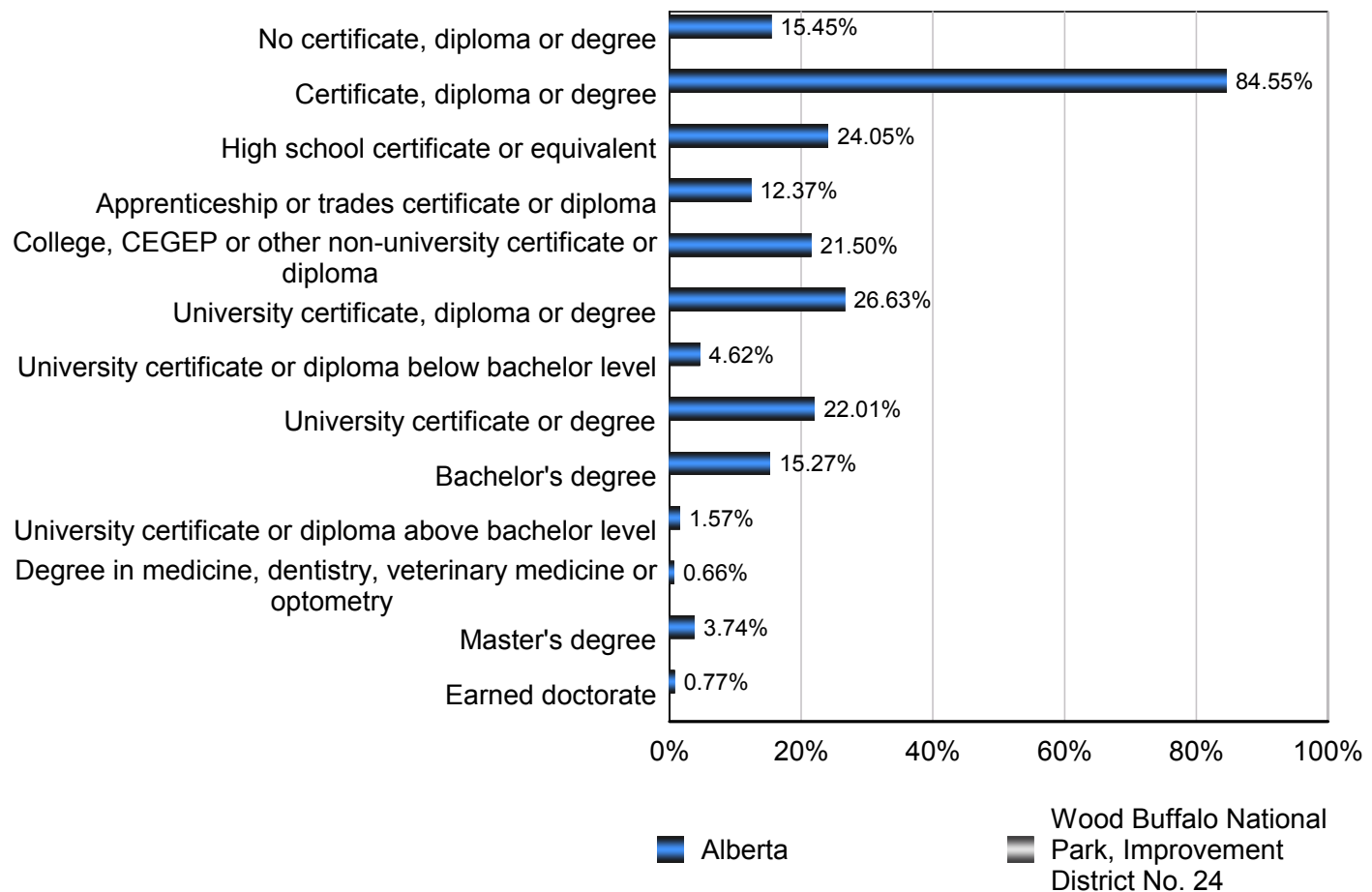
# Wood Buffalo National Park, Improvement District N

## Highest Level of Schooling, Population Aged 25-64 - Wood Buffalo National Park, Improvement District No. 24 (2006)

% of Population Aged 25-64

Highest Level of Schooling	al Park, Improvement District No. 24	Alberta
No certificate, diploma or degree	0.00%	15.45%
Certificate, diploma or degree	0.00%	84.55%
High school certificate or equivalent	0.00%	24.05%
Apprenticeship or trades certificate or diploma	0.00%	12.37%
College, CEGEP or other non-university certificate or diploma	0.00%	21.50%
University certificate, diploma or degree	0.00%	26.63%
University certificate or diploma below bachelor level	0.00%	4.62%
University certificate or degree	0.00%	22.01%
Bachelor's degree	0.00%	15.27%
University certificate or diploma above bachelor level	0.00%	1.57%
Degree in medicine, dentistry, veterinary medicine or optometry	0.00%	0.66%
Master's degree	0.00%	3.74%
Earned doctorate	0.00%	0.77%

## Amount by Which the Highest Level of Schooling - Wood Buffalo National Park, Improvement District No. 24 vs Provincial Average (2006)

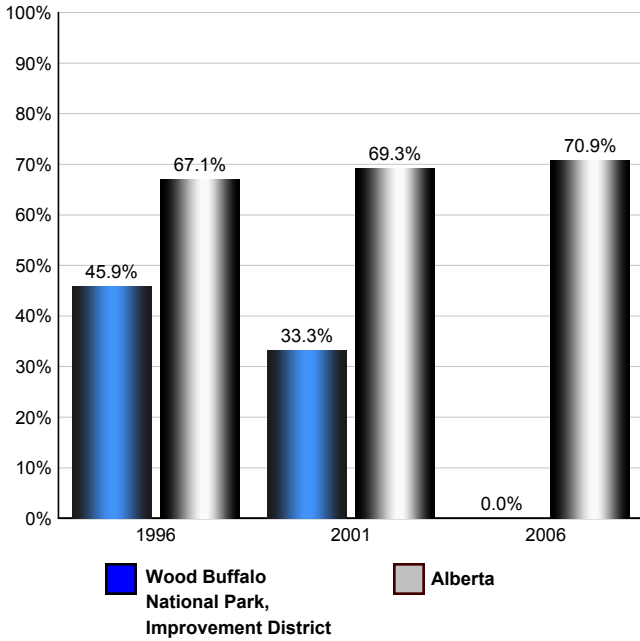


Source: Statistics Canada 2007.  
 Alberta, Alberta. 2006 Community Profiles. 2006 Census.  
 Statistics Canada Catalogue no. 92-591-XWE. Ottawa. Released March 13, 2007.

## Labour Force

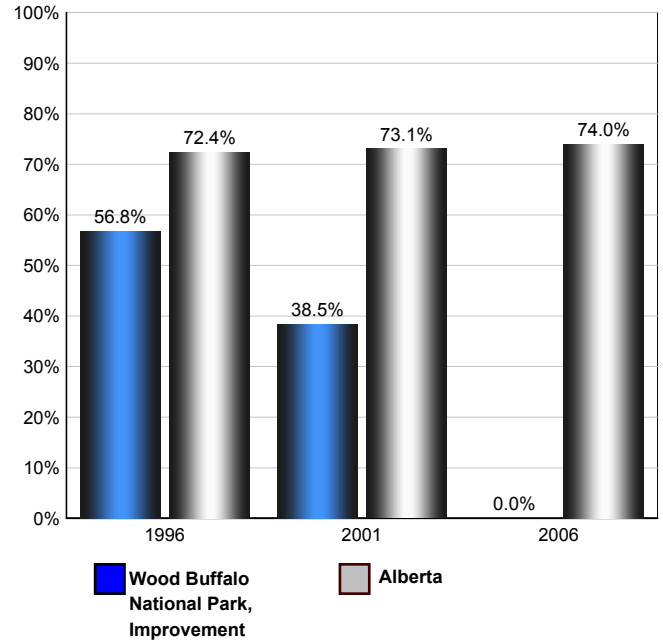
### Annual Labour Force Activity Rates - Wood Buffalo National Park, Improvement District No. 24 vs Alberta

#### Employment Rate



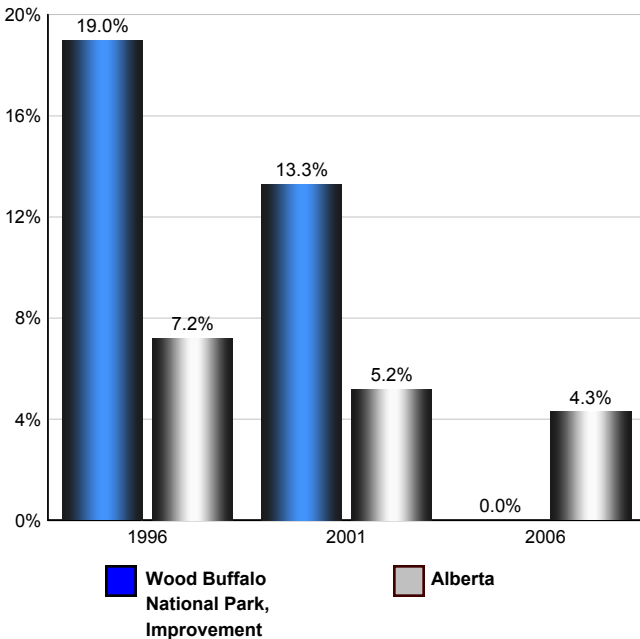
Employment Rate is calculated by dividing the total employed by the total population 15 and over

#### Participation Rate



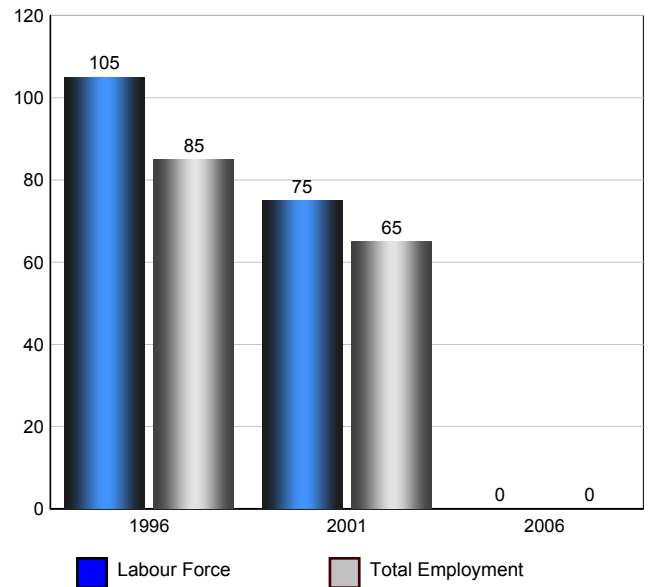
The Participation rate is calculated by summing together the number employed and unemployed and dividing the result by the total population aged 15 and over

#### Unemployment Rate



The Unemployment rate is calculated by dividing the total number of persons in the labour force that are reported as being unemployed by the total labour force.

#### Wood Buffalo National Park, Improvement District No.



Source: Statistics Canada 2007. Wood Buffalo National Park, Improvement District No. 24, Alberta. 2006 Community Profiles. 2006 Census. Statistics Canada Catalogue no. 92-591-XWE. Ottawa. Released March 13, 2007.

# Wood Buffalo National Park, Improvement District N

## Labour Force Age 15+ - Wood Buffalo National Park, Improvement District No. 24 (2006)

### Industry by Gender

Industry	Males	Females	Total
Agriculture, Forestry, Fishing and Hunting	0	0	0
Mining, Oil and Gas Extraction	0	0	0
Utilities	0	0	0
Construction	0	0	0
Manufacturing	0	0	0
Wholesale Trade	0	0	0
Retail Trade	0	0	0
Transportation and Warehousing	0	0	0
Information and Cultural Industries	0	0	0
Finance and Insurance	0	0	0
Real Estate, Rental and Leasing	0	0	0
Professional, Scientific and Technical Services	0	0	0
Management of Companies and Enterprises	0	0	0
Administrative and Support, Waste Management and Remediation Services	0	0	0
Educational services	0	0	0
Health care and social assistance	0	0	0
Arts, Entertainment and Recreation	0	0	0
Accommodation and Food Services	0	0	0
Other Services (except Public Administration)	0	0	0
Public Administration	0	0	0
<b>Total</b>	<b>0</b>	<b>0</b>	<b>0</b>

Source: Statistics Canada 2007.

Wood Buffalo National Park, Improvement District No. 24, Alberta. 2006 Community Profiles. 2006 Census. Statistics Canada Catalogue no. 92-591-XWE. Ottawa. Released March 13, 2007.

### Occupation by Gender

Occupation	Males	Females	Total
Management Occupations	0	0	0
Business, Finance and Administration Occupations	0	0	0
Natural and Applied Sciences and Related Occupations	0	0	0
Health Occupations	0	0	0
Occupations in Social Science, Education, Government Service	0	0	0
Occupations in Art, Culture, Recreation and Sport	0	0	0
Sales and Service Occupations	0	0	0
Trades, Transport and Equipment Operators and Related Occupations	0	0	0
Occupations Unique to Primary	0	0	0
Occupations Unique to Processing, Manufacturing and Utilities	0	0	0
<b>Total</b>	<b>0</b>	<b>0</b>	<b>0</b>

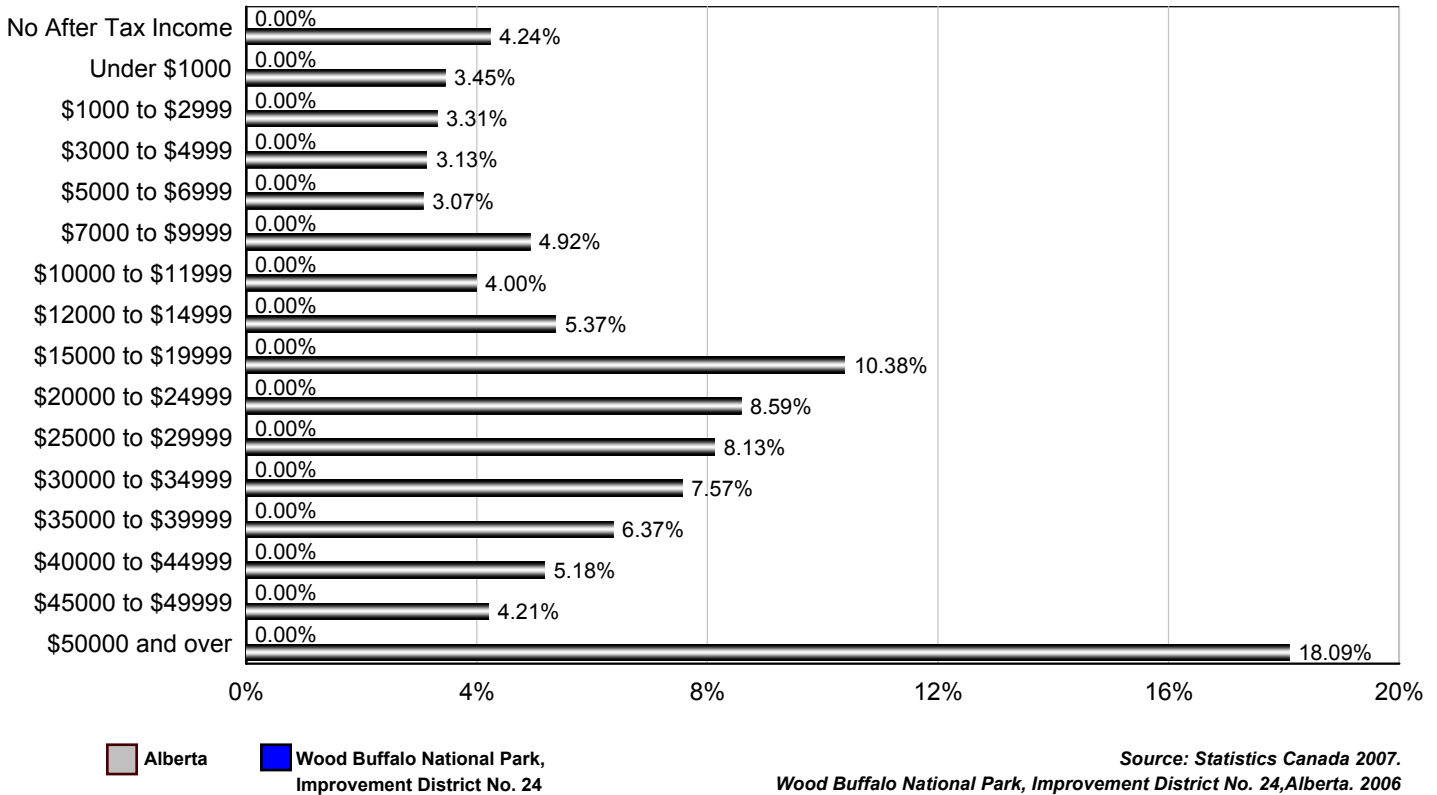
Source: Statistics Canada 2007.

Wood Buffalo National Park, Improvement District No. 24, Alberta. 2006 Community Profiles. 2006 Census. Statistics Canada Catalogue no. 92-591-XWE. Ottawa. Released March 13, 2007.

# Wood Buffalo National Park, Improvement District N

## Income

### Percent of Population 15+ by Income Bracket - Wood Buffalo National Park, Improvement District No. 24 vs Alberta (2005)



### Population 15+ by Total After Tax Income - Wood Buffalo National Park, Improvement District No. 24 (2005)

	Males	Females	Total
Without After-Tax Income	0	0	0
Under \$1,000	0	0	0
\$1,000 to \$2,999	0	0	0
\$3,000 to \$4,999	0	0	0
\$5,000 to \$6,999	0	0	0
\$7,000 to \$9,999	0	0	0
\$10,000 to \$11,999	0	0	0
\$12,000 to \$14,999	0	0	0
\$15,000 to \$19,999	0	0	0
\$20,000 to \$24,999	0	0	0
\$25,000 to \$29,999	0	0	0
\$30,000 to \$34,999	0	0	0
\$35,000 to \$39,999	0	0	0
\$40,000 to \$44,999	0	0	0
\$45,000 to \$49,999	0	0	0
\$50,000 and over	0	0	0
<b>Total</b>	<b>0</b>	<b>0</b>	<b>0</b>

Due to rounding consolidating the shown income brackets may lead to errors. Such errors would be most pronounced for small communities.

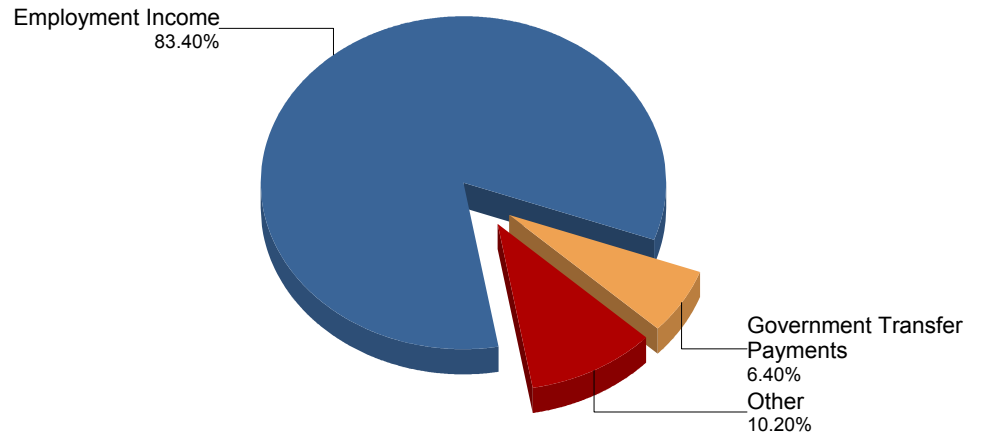
Source: Statistics Canada 2007. Wood Buffalo National Park, Improvement District No. 24, Alberta. 2006 Community Profiles. 2006 Census. Statistics Canada Catalogue no. 92-591-XWE. Ottawa. Released March 13, 2007.

# Wood Buffalo National Park, Improvement District N

## Composition of Family Income for Economic Families - Wood Buffalo National Park, Improvement District No. 24 vs Alberta (2005)

Wood Buffalo National Park,  
Improvement District No. 24

Alberta



Economic family total income - The total income of an economic family is the sum of the total incomes of all members of that family.

Source: Statistics Canada 2007.  
Wood Buffalo National Park, Improvement District No. 24, Alberta. 2006 Community Profiles. 2006 Census.  
Statistics Canada Catalogue no. 92-591-XWE. Ottawa. Released March 13, 2007.

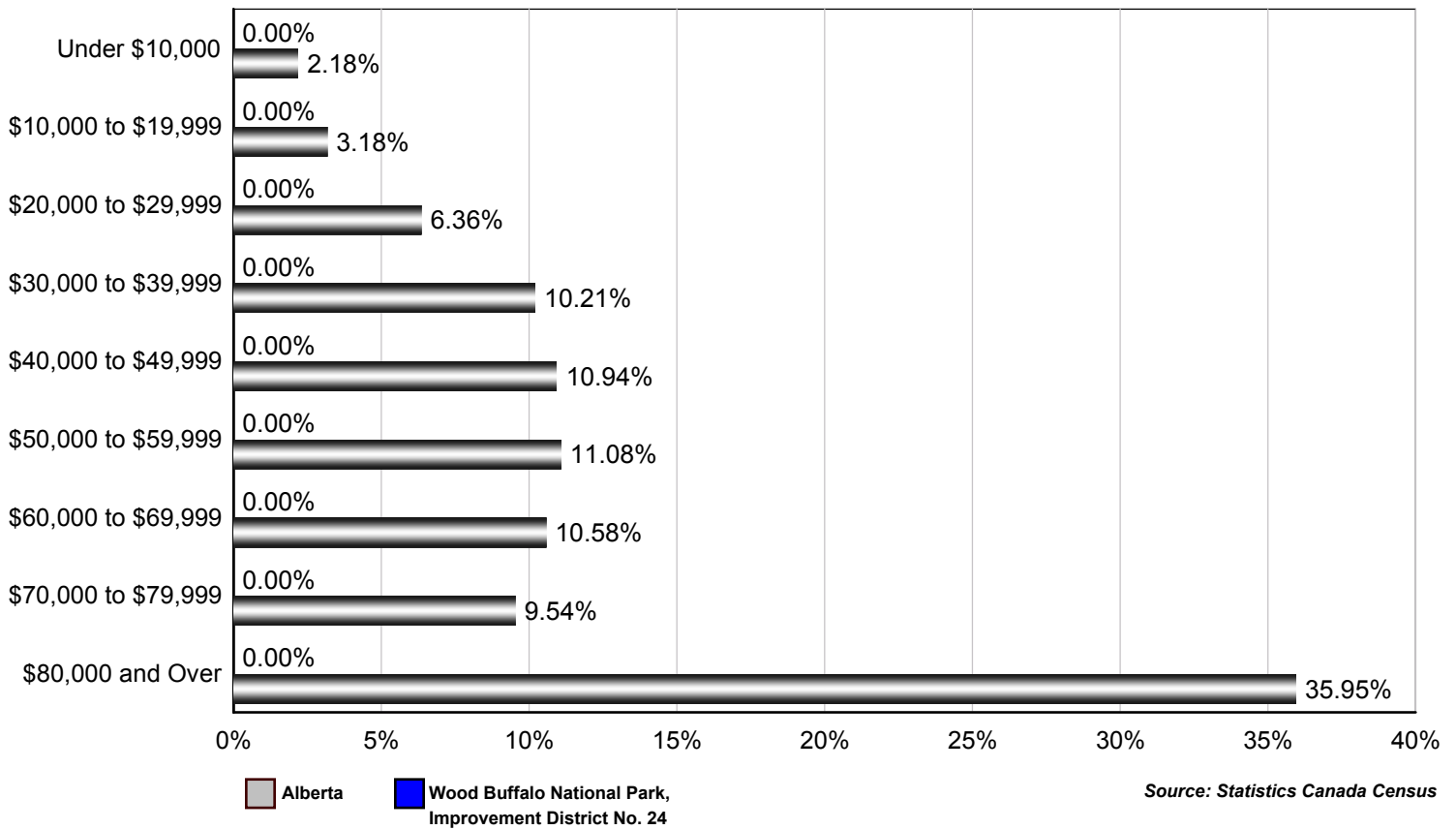
## Population 15+ With Employment Earnings - Wood Buffalo National Park, Improvement District No. 24 (2005)

	Males	Females	Total
Earnings - As a % of total Earnings	0%	0%	0%
Median Employment Earnings	\$0	\$0	\$0
Average Employment Earnings	\$0	\$0	\$0

Source: Statistics Canada 2007.  
Wood Buffalo National Park, Improvement District No. 24, Alberta. 2006 Community Profiles. 2006 Census.  
Statistics Canada Catalogue no. 92-591-XWE. Ottawa. Released March 13, 2007.

# Wood Buffalo National Park, Improvement District N

## Percent of Total Economic Families by After-tax Income Brackets - Wood Buffalo National Park, Improvement District No. 24 vs Alberta (2005)



## Number of Economic Families by After-tax Income Brackets - Wood Buffalo National Park, Improvement District No. 24 (2005)

Income Bracket	Number of Families
Under \$10,000	0
\$10,000 to \$19,999	0
\$20,000 to \$29,999	0
\$30,000 to \$39,999	0
\$40,000 to \$49,999	0
\$50,000 to \$59,999	0
\$60,000 to \$69,999	0
\$70,000 to \$79,999	0
\$80,000 and over	0
<b>Total</b>	<b>0</b>

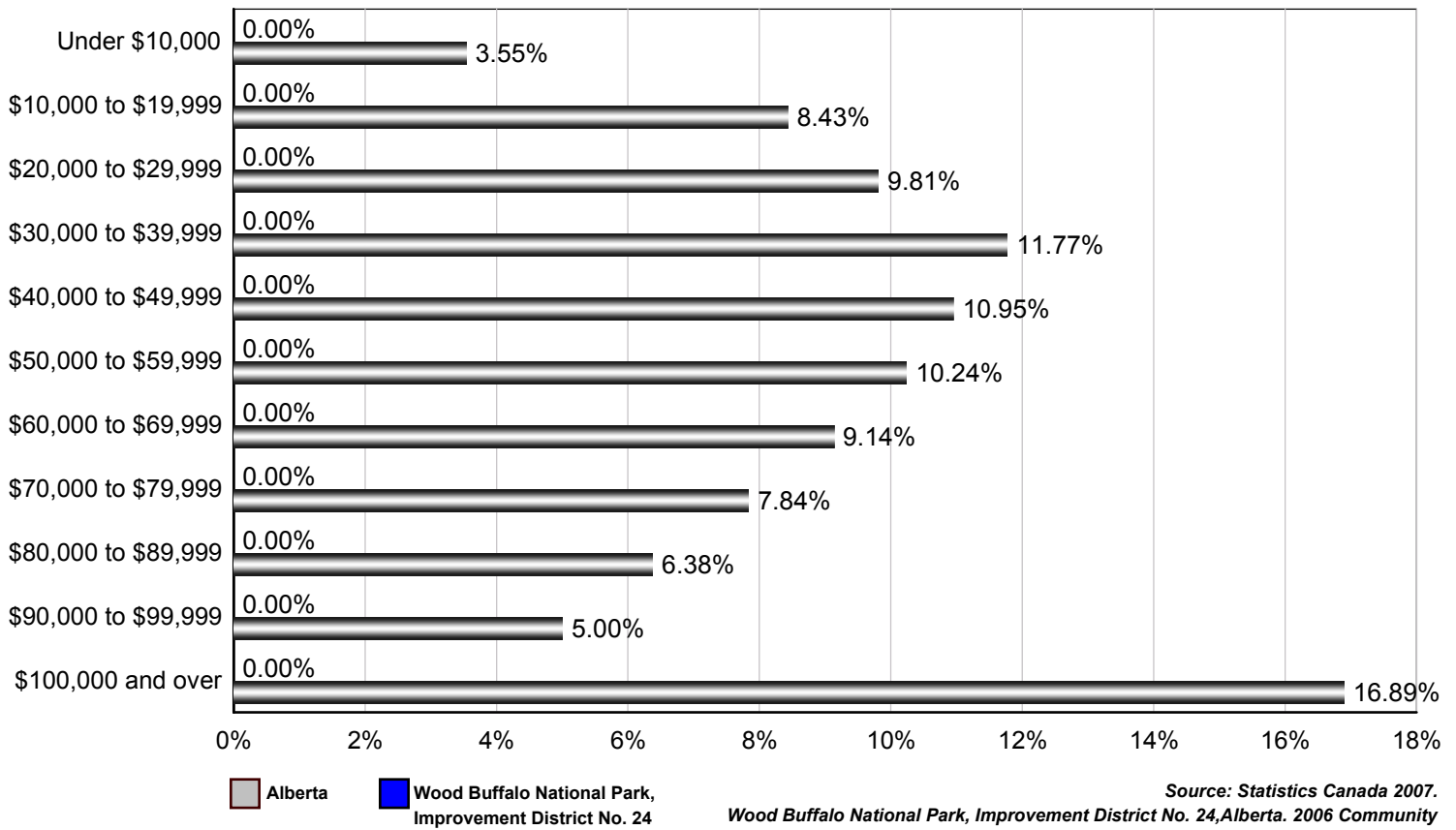
Family Income	Value
Median After-Tax Family Income	\$0
Average After-Tax Family Income	\$0

Due to rounding consolidating the shown income brackets may lead to errors. Such errors would be most pronounced for small communities.

Source: Statistics Canada 2007.  
 Wood Buffalo National Park, Improvement District No. 24, Alberta. 2006 Community Profiles. 2006 Census.  
 Statistics Canada Catalogue no. 92-591-XWE. Ottawa. Released March 13, 2007.

# Wood Buffalo National Park, Improvement District N

## Percent of Total Private Households by After-tax Income Brackets - Wood Buffalo National Park, Improvement District No. 24 vs Alberta (2005)



## Number of Private Households by After-tax Income Brackets - Wood Buffalo National Park, Improvement District No. 24 (2005)

Income Bracket	Number of Families
Under \$10,000	0
\$10,000 to \$19,999	0
\$20,000 to \$29,999	0
\$30,000 to \$39,999	0
\$40,000 to \$49,999	0
\$50,000 to \$59,999	0
\$60,000 to \$69,999	0
\$70,000 to \$79,999	0
\$80,000 to \$89,999	0
\$90,000 to \$99,999	0
\$100,000 and Over	0
<b>Total</b>	<b>0</b>

	Family Income
Median After-Tax Family Income	\$0
Average After-Tax Family Income	\$0

Due to rounding consolidating the shown income brackets may lead to errors. Such errors would be most pronounced for small communities.

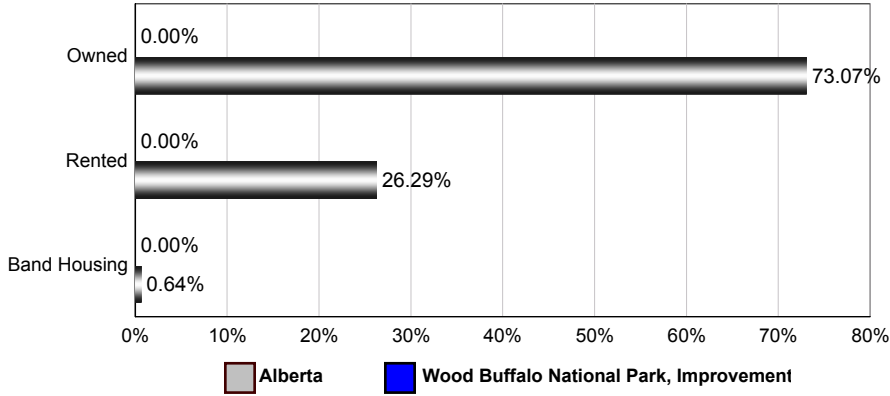
Source: Statistics Canada Census



## Dwellings

### Number of Occupied Private Dwellings by Ownership - Wood Buffalo National Park, Improvement District No. 24

Wood Buffalo National Park, Improvement District No. 24 vs Alberta (2006)



Wood Buffalo National Park, Improvement District No. 24

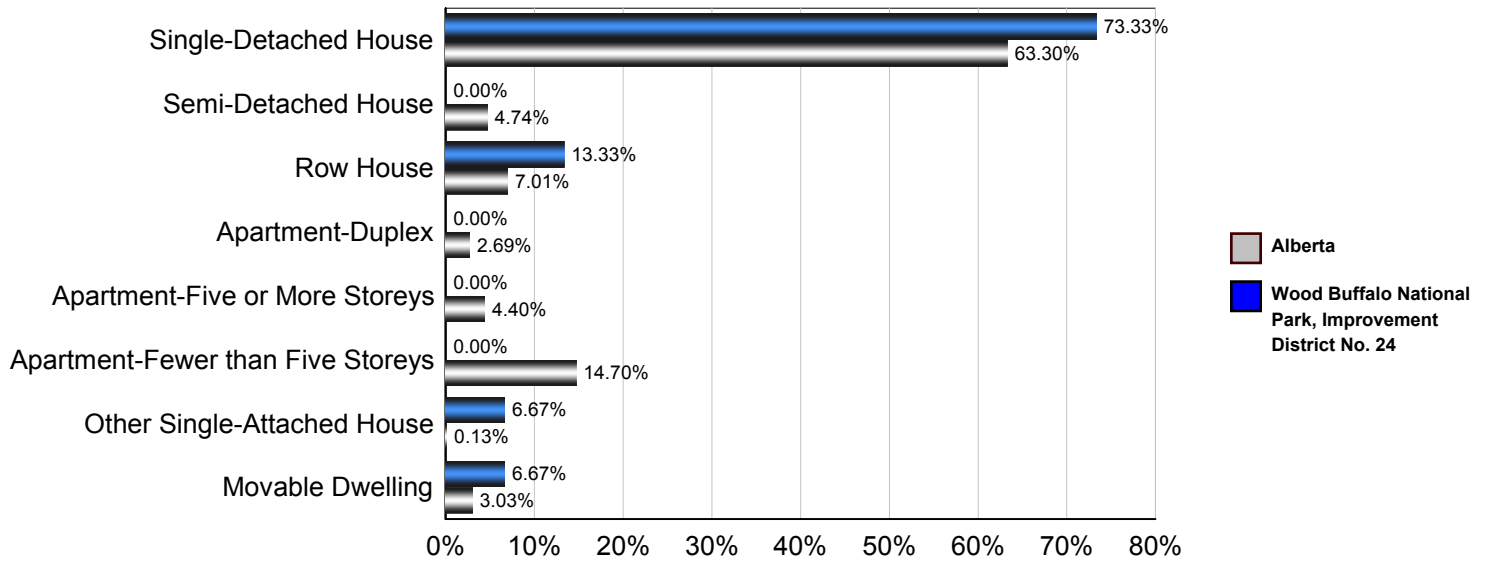
	1996	2001
Owned	15	25
Rented	10	10
Band Housing	30	35
<b>Total</b>	<b>55</b>	<b>70</b>

Source: Statistics Canada 2007.  
 Wood Buffalo National Park, Improvement District No. 24, Alberta.  
 2006 Community Profiles. 2006 Census.  
 Statistics Canada Catalogue no. 92-591-XWE. Ottawa. Released

# Wood Buffalo National Park, Improvement District N

## Number of Occupied Private Dwellings by Structural Type - Wood Buffalo National Park, Improvement District No. 24

### Wood Buffalo National Park, Improvement District No. 24 vs Alberta (2006)



### Wood Buffalo National Park, Improvement District No. 24

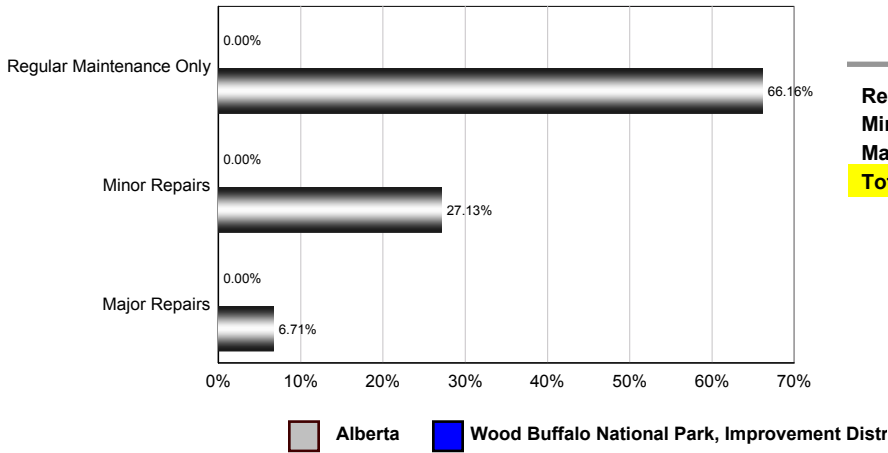
	1996	2001	2006
Single-Detached House	40	45	55
Semi-Detached House	0	5	0
Row House	0	0	0
Apartment - Duplex	0	0	0
Apartment - Five or More Storeys	0	0	0
Apartment - Fewer than Five Storeys	0	0	0
Other Single-Attached House	0	0	0
Movable Dwelling	10	15	5
<b>Total</b>	<b>50</b>	<b>65</b>	<b>60</b>

Source: Statistics Canada 2007.  
 Wood Buffalo National Park, Improvement District No. 24, Alberta. 2006 Community Profiles. 2006 Census.  
 Statistics Canada Catalogue no. 92-591-XWE. Ottawa. Released March 13, 2007.

# Wood Buffalo National Park, Improvement District N

## Number of Occupied Private Dwellings by the Condition of Dwelling - Wood Buffalo National Park, Improvement District No. 24

Wood Buffalo National Park, Improvement District No. 24 vs Alberta (2006)



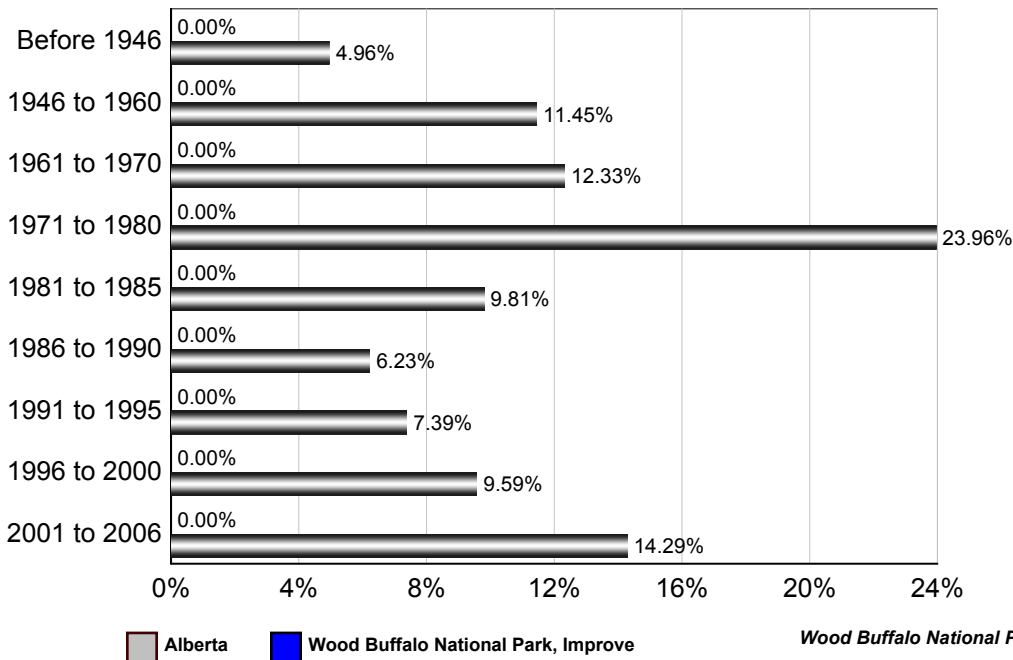
Wood Buffalo National Park, Improvement District No. 24

	1996	2001
Regular Maintenance Only	20	15
Minor repairs	25	25
Major repairs	10	25
<b>Total</b>	<b>55</b>	<b>65</b>

Source: Statistics Canada 2007.  
Wood Buffalo National Park, Improvement District No. 24, Alberta. 2006 Community Profiles. 2006 Census. Statistics Canada Catalogue no. 92-591-XWE. Ottawa. Released March 13, 2007.

## Number of Occupied Private Dwellings by Period of Construction - Wood Buffalo National Park, Improvement District No. 24

Wood Buffalo National Park, Improvement District No. 24 vs Alberta (2006)



Wood Buffalo National Park, Improvement District No. 24

Source: Statistics Canada 2007.  
Wood Buffalo National Park, Improvement District No. 24, Alberta. 2006 Community Profiles. 2006 Census. Statistics Canada Catalogue no. 92-591-XWE. Ottawa. Released March 13, 2007.

