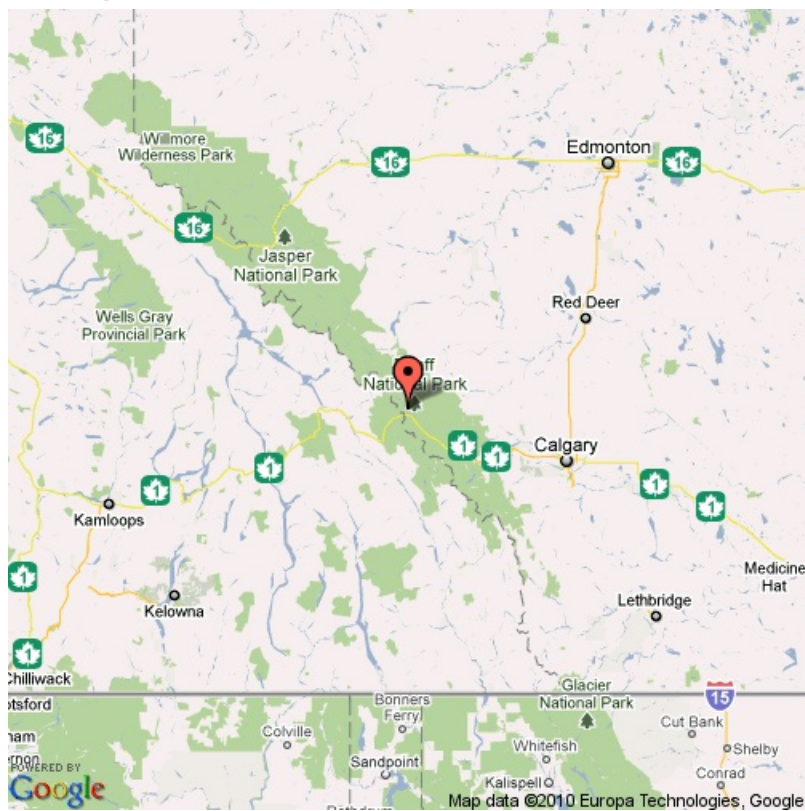


## Banff National Park, Improvement District No. 9

### Google Map



Disclaimer: Information in this profile has been provided from a variety of external sources. AlbertaFirst.com Ltd. provides this template, and each community posts their own content within the template. If you find inaccuracies or information you feel needs changing, please contact the community directly. Although every effort has been made to ensure the accuracy, currency and reliability of the content and data, AlbertaFirst.com Ltd. accepts no responsibility in this regard.

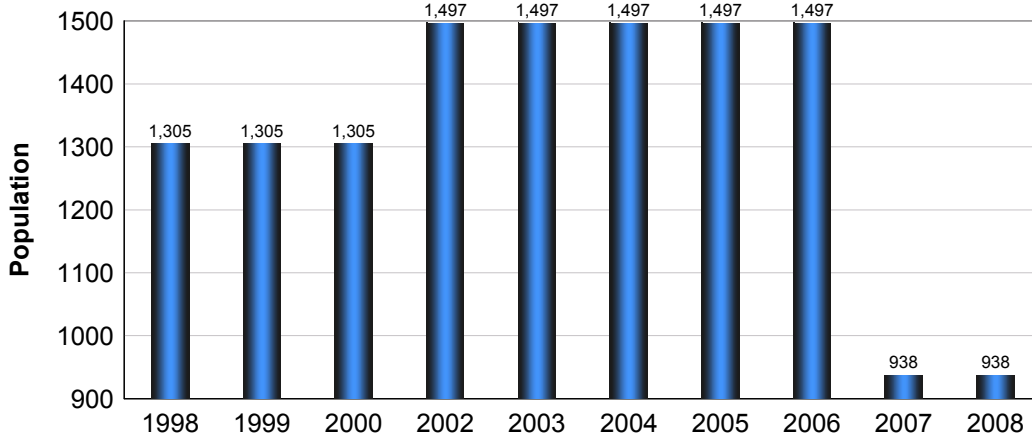
©AlbertaFirst.com Ltd., 2010.

# Banff National Park, Improvement District No. 9

A chart or table in this Profile may be blank. This will occur if there was no data available for that community for the specified time period

## Municipal Population

### Total Population - Banff National Park, Improvement District No. 9

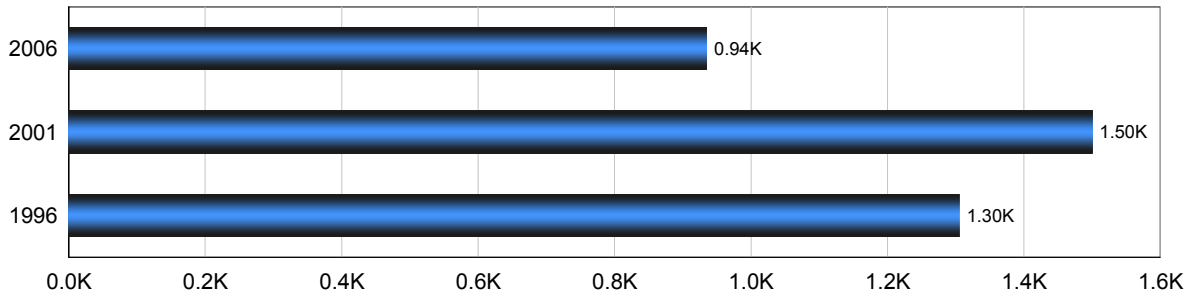


Year	Community Growth	Alberta Growth
2008	0.00%	2.37%
2007	(37.34)%	3.39%
2006	0.00%	1.95%
2005	0.00%	3.91%
2004	0.00%	0.95%
2003	0.00%	1.34%
2001	14.71%	4.02%
2000	0.00%	2.15%
1999	0.00%	3.24%
1998	0.00%	1.33%

Source: Statistics Canada 2007.  
Banff National Park, Improvement District No. 9, Alberta. 2006 Community Profiles. 2006 Census.  
Statistics Canada Catalogue no. 92-591-XWE. Ottawa. Released March 13, 2007.

## Population

### Total Population - Banff National Park, Improvement District No. 9



Census Year	Total Population	% Change
2006	935	37.30%
2001	1,500	14.70%
1996	1,305	42.50%

Source: Statistics Canada 2007.  
Banff National Park, Improvement District No. 9, Alberta. 2006 Community Profiles. 2006 Census.  
Statistics Canada Catalogue no. 92-591-XWE. Ottawa. Released March 13, 2007.

# Banff National Park, Improvement District No. 9

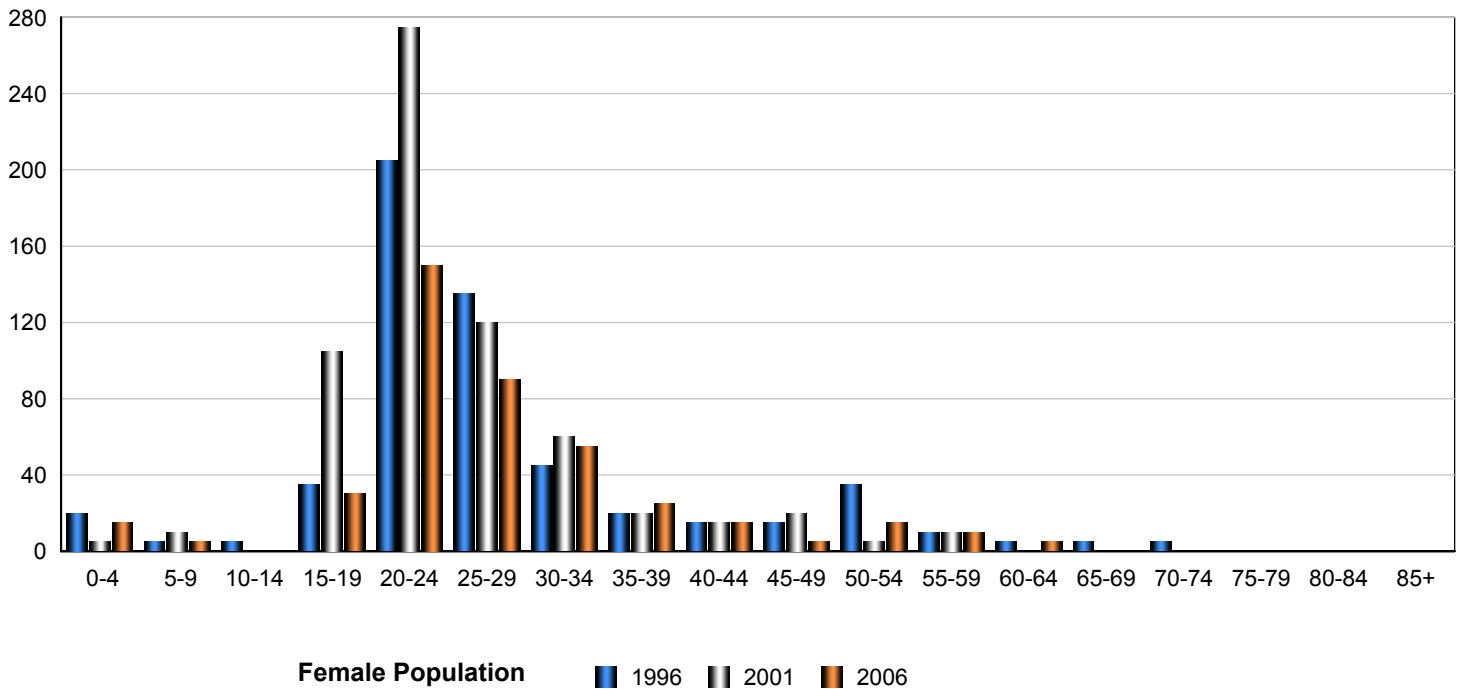
## Banff National Park, Improvement District No. 9 - Population Breakdown

Rural	Includes Hamlets	Rural	CCS
	Lake Louise	935	935
Banff			6,700
<b>Banff National Park, Improvement District No. 9</b>		<b>935</b>	<b>7,635</b>

\*CCS - consolidated census subdivision (all within County boundaries)

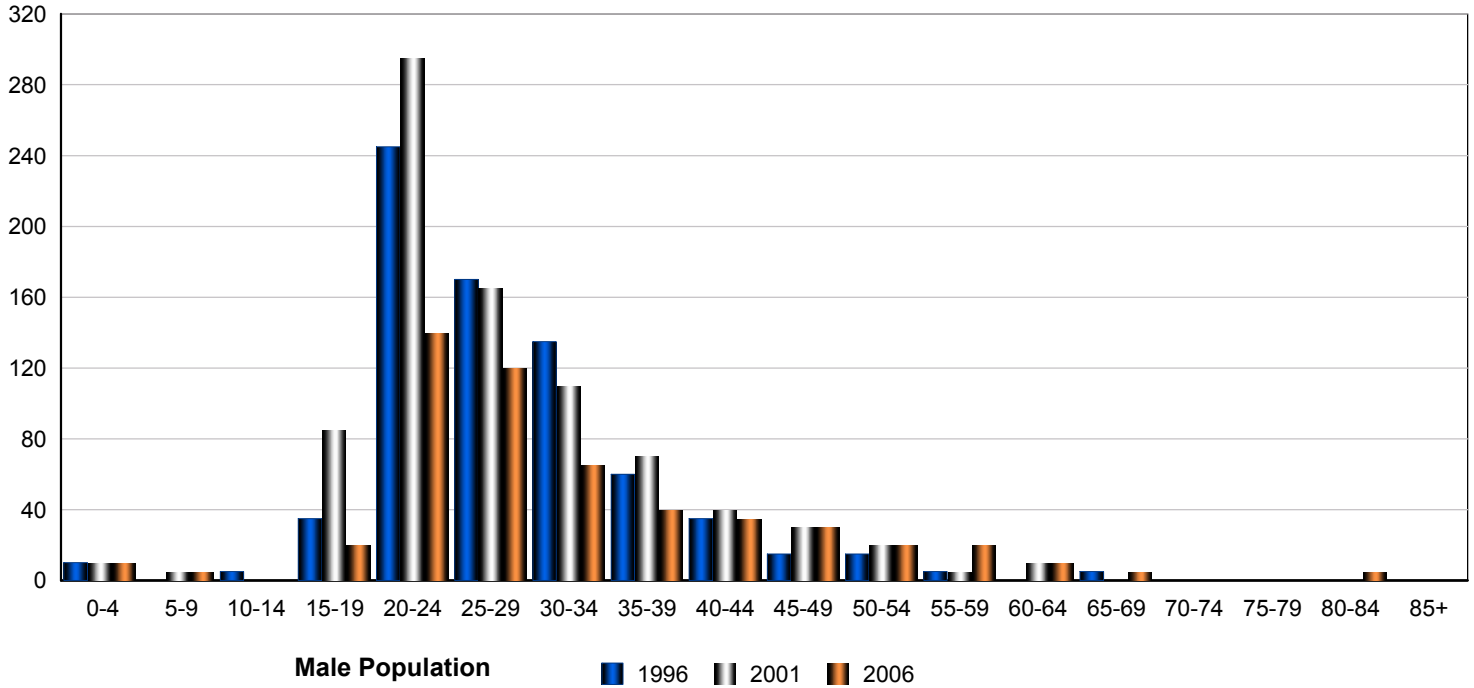
## Total Population by Gender and Age - Banff National Park, Improvement District No. 9

### Census Population by Gender - Banff National Park, Improvement District No. 9

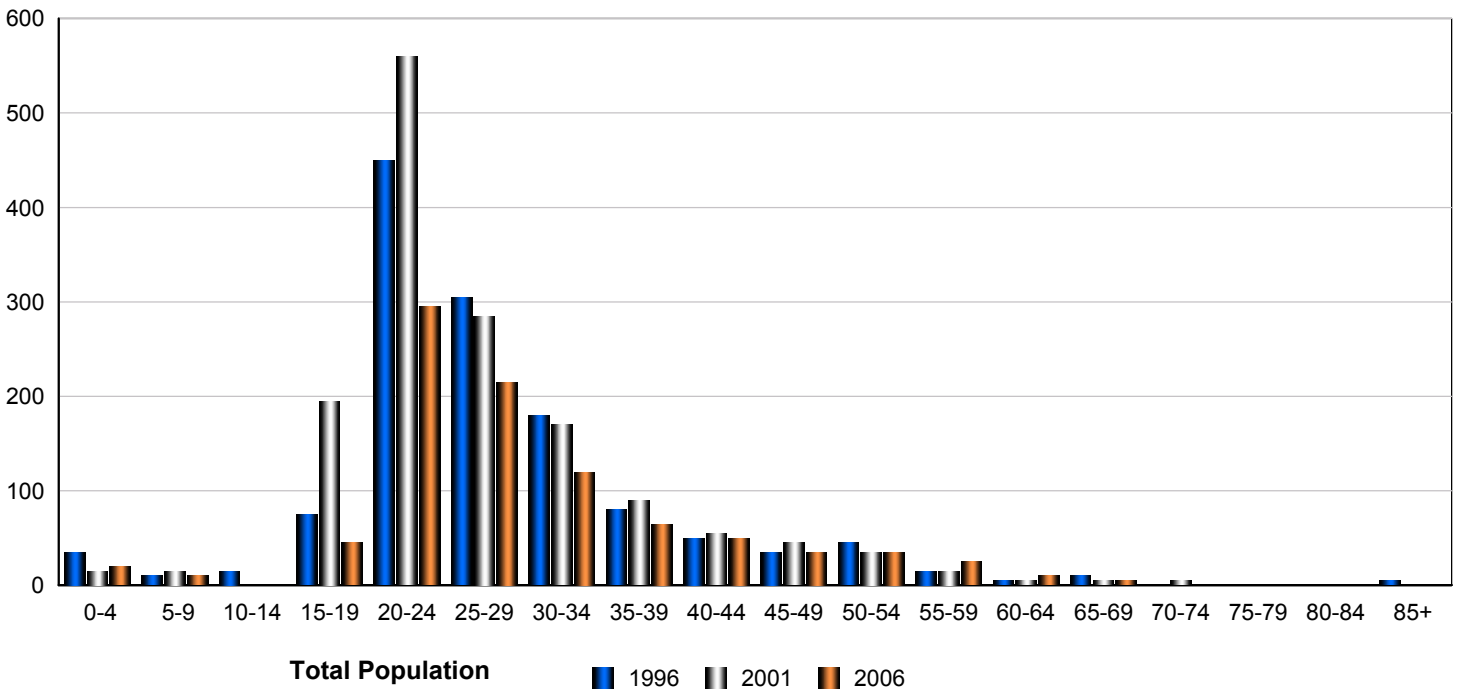


# Banff National Park, Improvement District No. 9

Census Population by Gender - Banff National Park, Improvement District No. 9



Census Population by Gender - Banff National Park, Improvement District No. 9



# Banff National Park, Improvement District No. 9

	Male			Female			Total		
	2006	2001	1996	2006	2001	1996	2006	2001	1996
0-4	10	10	10	15	5	20	25	15	30
5-9	5	5	0	5	10	5	10	15	5
10-14	0	0	5	0	0	5	0	0	10
15-19	20	85	35	30	105	35	50	190	70
20-24	140	295	245	150	275	205	290	570	450
25-29	120	165	170	90	120	135	210	285	305
30-34	65	110	135	55	60	45	120	170	180
35-39	40	70	60	25	20	20	65	90	80
40-44	35	40	35	15	15	15	50	55	50
45-49	30	30	15	5	20	15	35	50	30
50-54	20	20	15	15	5	35	35	25	50
55-59	20	5	5	10	10	10	30	15	15
60-64	10	10	0	5	0	5	15	10	5
65-69	5	0	5	0	0	5	5	0	10
70-74	0	0	0	0	0	5	0	0	5
75-79	0	0	0	0	0	0	0	0	0
80-84	5	0	0	0	0	0	5	0	0
85-89	0	0	0	0	0	0	0	0	0
<b>Total</b>	<b>525</b>	<b>845</b>	<b>735</b>	<b>420</b>	<b>645</b>	<b>560</b>	<b>945</b>	<b>1,490</b>	<b>1,295</b>

Source: Statistics Canada 2007.  
 Banff National Park, Improvement District No. 9, Alberta. 2006 Community Profiles. 2006 Census.  
 Statistics Canada Catalogue no. 92-591-XWE. Ottawa. Released March 13, 2007.

# Banff National Park, Improvement District No. 9

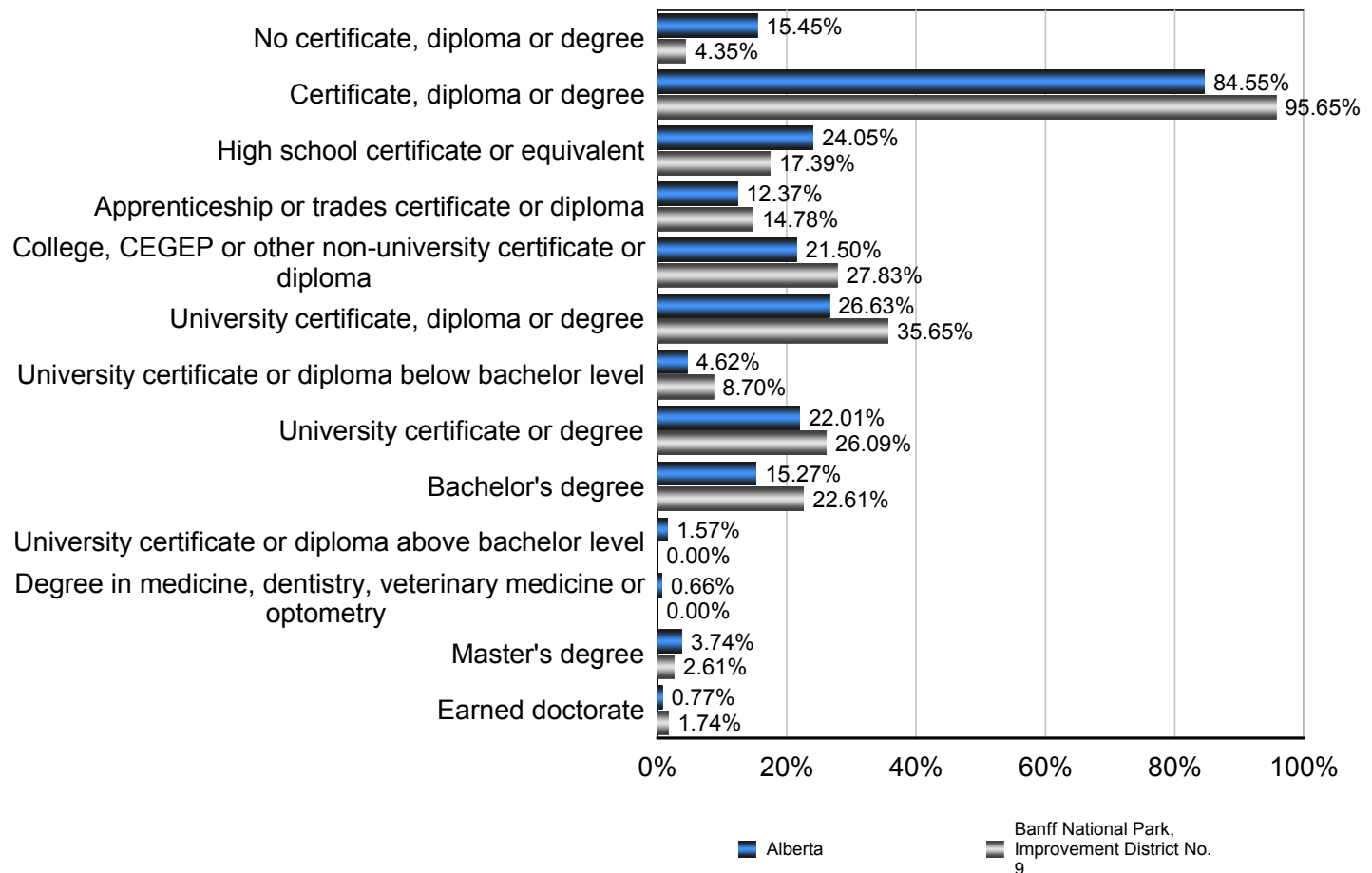
## Education Statistics

### Highest Level of Schooling, Population Aged 25-64 - Banff National Park, Improvement District No. 9 (2006)

% of Population Aged 25-64

Highest Level of Schooling	Banff National Park, Improvement District No. 9	Alberta
No certificate, diploma or degree	4.35%	15.45%
Certificate, diploma or degree	95.65%	84.55%
High school certificate or equivalent	17.39%	24.05%
Apprenticeship or trades certificate or diploma	14.78%	12.37%
College, CEGEP or other non-university certificate or diploma	27.83%	21.50%
University certificate, diploma or degree	35.65%	26.63%
University certificate or diploma below bachelor level	8.70%	4.62%
University certificate or degree	26.09%	22.01%
Bachelor's degree	22.61%	15.27%
University certificate or diploma above bachelor level	0.00%	1.57%
Degree in medicine, dentistry, veterinary medicine or optometry	0.00%	0.66%
Master's degree	2.61%	3.74%
Earned doctorate	1.74%	0.77%

### Amount by Which the Highest Level of Schooling - Banff National Park, Improvement District No. 9 vs Provincial Average (2006)

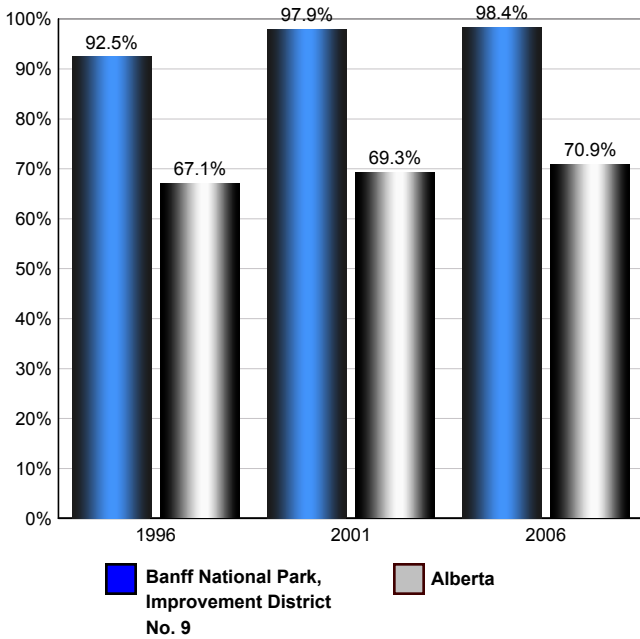


Source: Statistics Canada 2007.  
 Alberta, Alberta. 2006 Community Profiles. 2006 Census.  
 Statistics Canada Catalogue no. 92-591-XWE. Ottawa. Released March 13, 2007.

## Labour Force

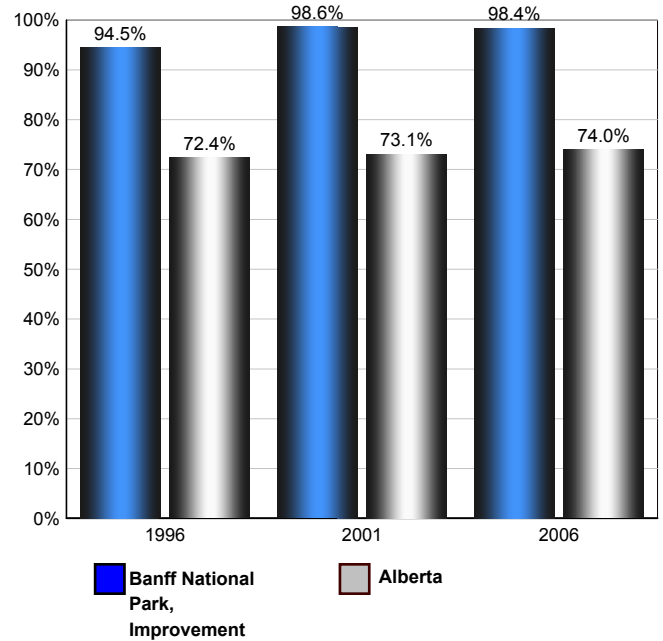
### Annual Labour Force Activity Rates - Banff National Park, Improvement District No. 9 vs Alberta

#### Employment Rate



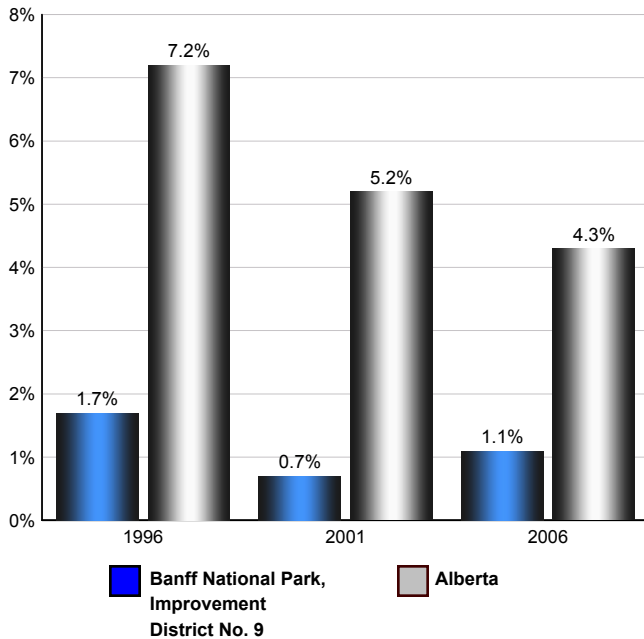
Employment Rate is calculated by dividing the total employed by the total population 15 and over

#### Participation Rate



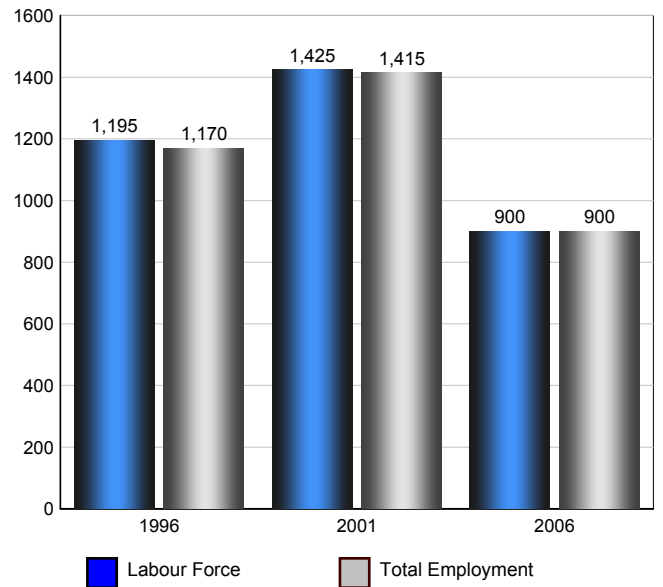
The Participation rate is calculated by summing together the number employed and unemployed and dividing the result by the total population aged 15 and over

#### Unemployment Rate



The Unemployment rate is calculated by dividing the total number of persons in the labour force that are reported as being unemployed by the total labour force.

#### Banff National Park, Improvement District No. 9 Labour



Source: Statistics Canada 2007.  
Banff National Park, Improvement District No. 9, Alberta. 2006 Community Profiles.  
2006 Census.  
Statistics Canada Catalogue no. 92-591-XWE. Ottawa. Released March 13, 2007.

# Banff National Park, Improvement District No. 9

## Labour Force Age 15+ - Banff National Park, Improvement District No. 9 (2006)

### Industry by Gender

Industry	Males	Females	Total
Agriculture, Forestry, Fishing and Hunting	10	0	10
Mining, Oil and Gas Extraction	0	0	0
Utilities	0	0	0
Construction	10	0	10
Manufacturing	0	0	0
Wholesale Trade	0	0	0
Retail Trade	15	40	55
Transportation and Warehousing	20	0	20
Information and Cultural Industries	0	0	0
Finance and Insurance	0	0	0
Real Estate, Rental and Leasing	10	0	10
Professional, Scientific and Technical Services	0	0	0
Management of Companies and Enterprises	0	0	0
Administrative and Support, Waste Management and Remediation Services	0	10	10
Educational services	0	0	0
Health care and social assistance	0	0	0
Arts, Entertainment and Recreation	65	25	90
Accommodation and Food Services	385	270	655
Other Services (except Public Administration)	0	0	0
Public Administration	10	0	10
<b>Total</b>	<b>525</b>	<b>345</b>	<b>870</b>

Source: Statistics Canada 2007.  
Banff National Park, Improvement District No. 9, Alberta. 2006 Community Profiles. 2006 Census.  
Statistics Canada Catalogue no. 92-591-XWE. Ottawa. Released March 13, 2007.

### Occupation by Gender

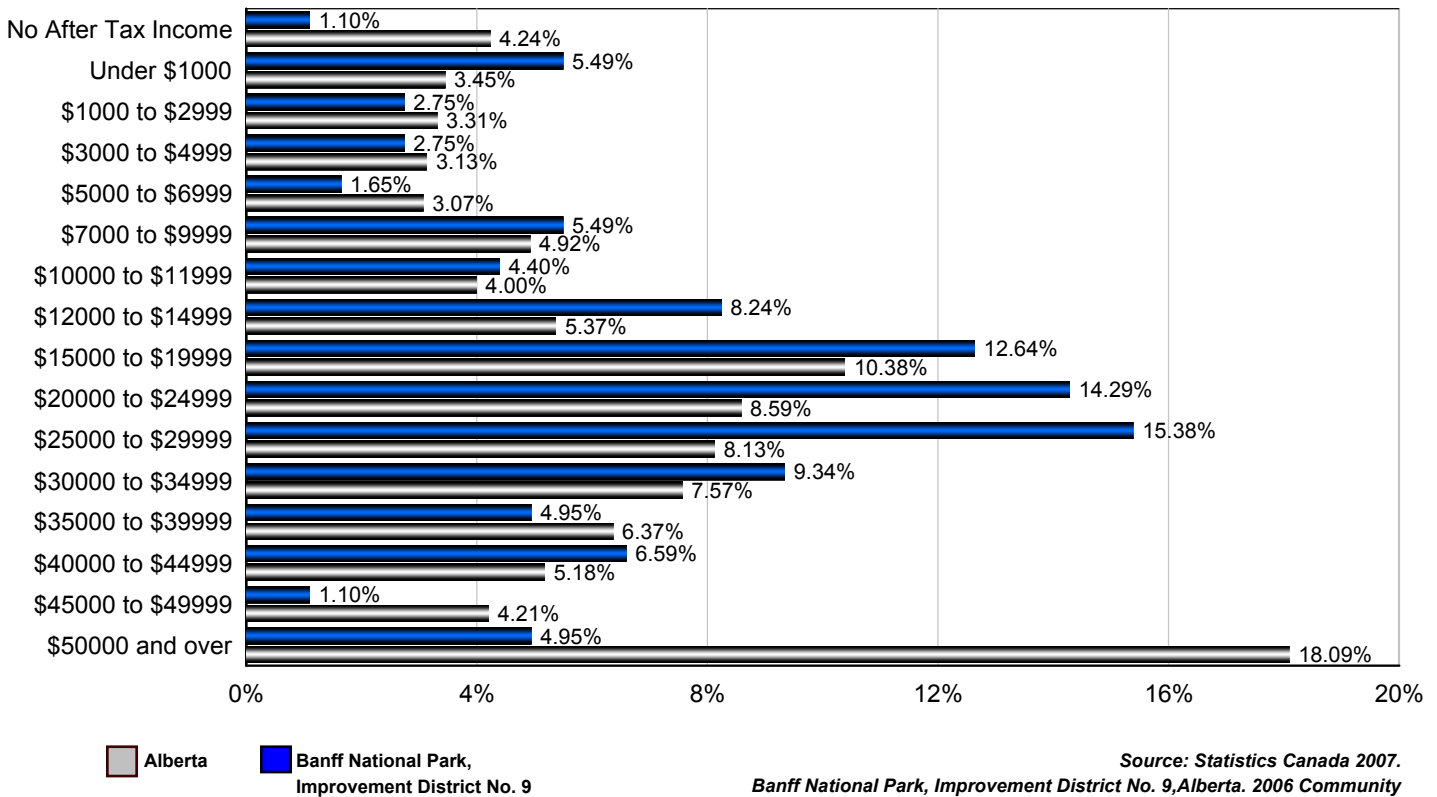
Occupation	Males	Females	Total
Management Occupations	45	60	105
Business, Finance and Administration Occupations	50	55	105
Natural and Applied Sciences and Related Occupations	10	0	10
Health Occupations	0	0	0
Occupations in Social Science, Education, Government Service	10	10	20
Occupations in Art, Culture, Recreation and Sport	0	15	15
Sales and Service Occupations	305	230	535
Trades, Transport and Equipment Operators and Related Occupations	90	10	100
Occupations Unique to Primary	0	0	0
Occupations Unique to Processing, Manufacturing and Utilities	0	0	0
<b>Total</b>	<b>510</b>	<b>380</b>	<b>890</b>

Source: Statistics Canada 2007.  
Banff National Park, Improvement District No. 9, Alberta. 2006 Community Profiles. 2006 Census.  
Statistics Canada Catalogue no. 92-591-XWE. Ottawa. Released March 13, 2007.

# Banff National Park, Improvement District No. 9

## Income

### Percent of Population 15+ by Income Bracket - Banff National Park, Improvement District No. 9 vs Alberta (2005)



### Population 15+ by Total After Tax Income - Banff National Park, Improvement District No. 9 (2005)

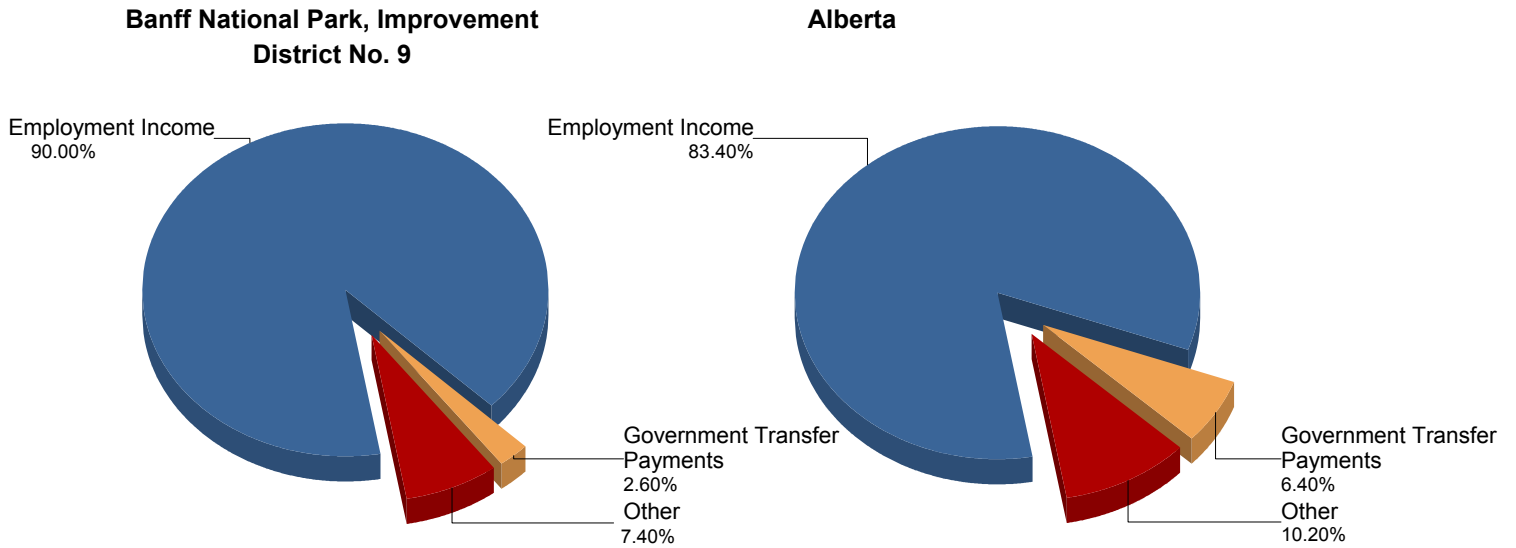
	Males	Females	Total
Without After-Tax Income	0	10	10
Under \$1,000	25	25	50
\$1,000 to \$2,999	10	15	25
\$3,000 to \$4,999	15	10	25
\$5,000 to \$6,999	10	0	10
\$7,000 to \$9,999	15	30	45
\$10,000 to \$11,999	20	20	40
\$12,000 to \$14,999	45	30	75
\$15,000 to \$19,999	60	50	110
\$20,000 to \$24,999	80	45	125
\$25,000 to \$29,999	70	70	140
\$30,000 to \$34,999	55	30	85
\$35,000 to \$39,999	30	15	45
\$40,000 to \$44,999	35	25	60
\$45,000 to \$49,999	0	10	10
\$50,000 and over	30	15	45
<b>Total</b>	<b>520</b>	<b>390</b>	<b>910</b>

Due to rounding consolidating the shown income brackets may lead to errors. Such errors would be most pronounced for small communities.

Source: Statistics Canada 2007. Banff National Park, Improvement District No. 9, Alberta. 2006 Community Profiles. 2006 Census. Statistics Canada Catalogue no. 92-591-XWE. Ottawa. Released March 13, 2007.

# Banff National Park, Improvement District No. 9

## Composition of Family Income for Economic Families - Banff National Park, Improvement District No. 9 vs Alberta (2005)



Economic family total income - The total income of an economic family is the sum of the total incomes of all members of that family.

Source: Statistics Canada 2007.  
Banff National Park, Improvement District No. 9, Alberta. 2006 Community Profiles. 2006 Census.  
Statistics Canada Catalogue no. 92-591-XWE. Ottawa. Released March 13, 2007.

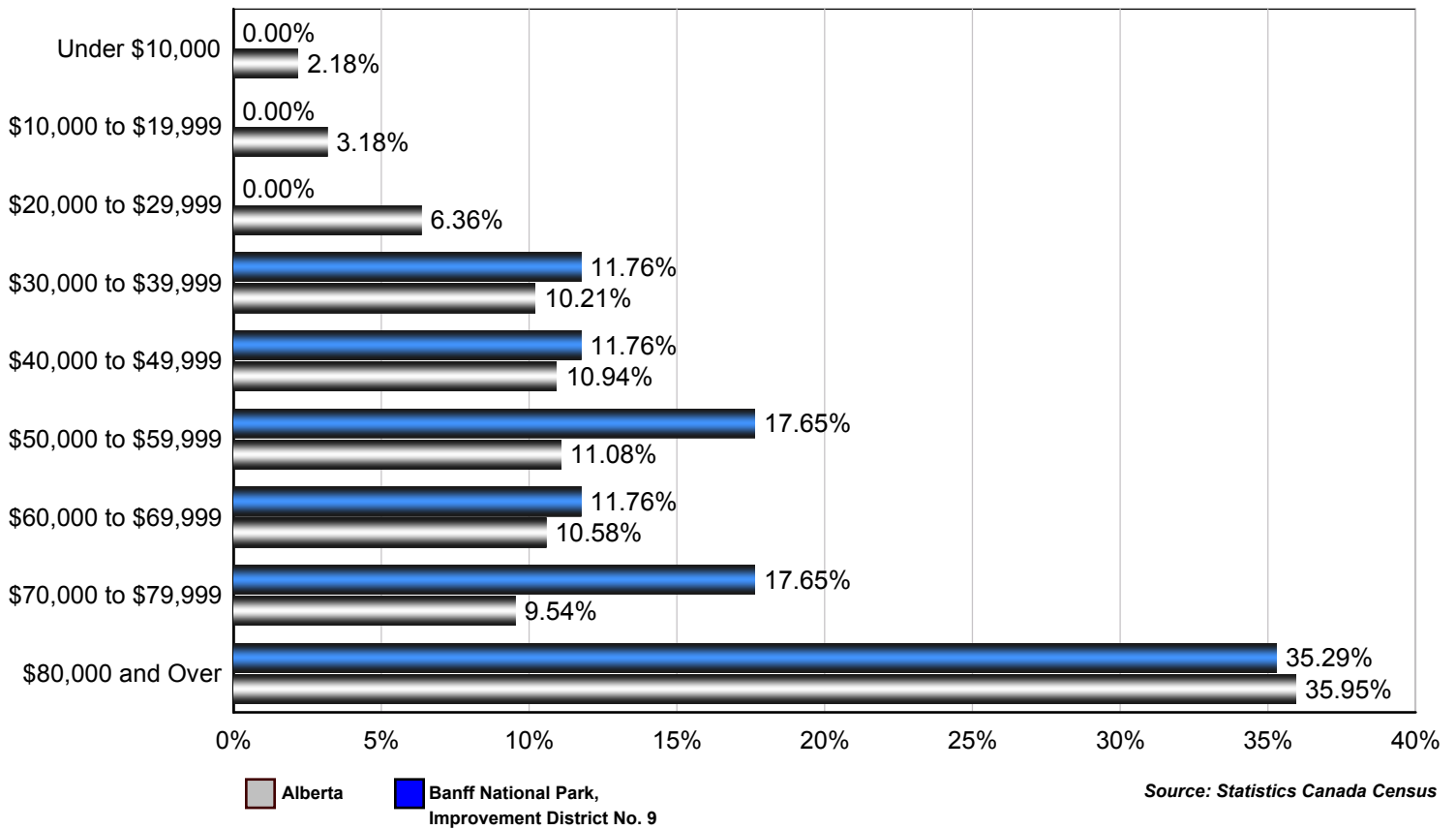
## Population 15+ With Employment Earnings - Banff National Park, Improvement District No. 9 (2005)

	Males	Females	Total
Earnings - As a % of total Earnings	95%	92%	94%
Median Employment Earnings	\$26,180	\$22,752	\$24,758
Average Employment Earnings	\$27,433	\$24,180	\$26,060

Source: Statistics Canada 2007.  
Banff National Park, Improvement District No. 9, Alberta. 2006 Community Profiles. 2006 Census.  
Statistics Canada Catalogue no. 92-591-XWE. Ottawa. Released March 13, 2007.

# Banff National Park, Improvement District No. 9

## Percent of Total Economic Families by After-tax Income Brackets - Banff National Park, Improvement District No. 9 vs Alberta (2005)



## Number of Economic Families by After-tax Income Brackets - Banff National Park, Improvement District No. 9 (2005)

Income Bracket	Number of Families
Under \$10,000	0
\$10,000 to \$19,999	0
\$20,000 to \$29,999	0
\$30,000 to \$39,999	10
\$40,000 to \$49,999	10
\$50,000 to \$59,999	15
\$60,000 to \$69,999	10
\$70,000 to \$79,999	15
\$80,000 and over	30
<b>Total</b>	<b>85</b>

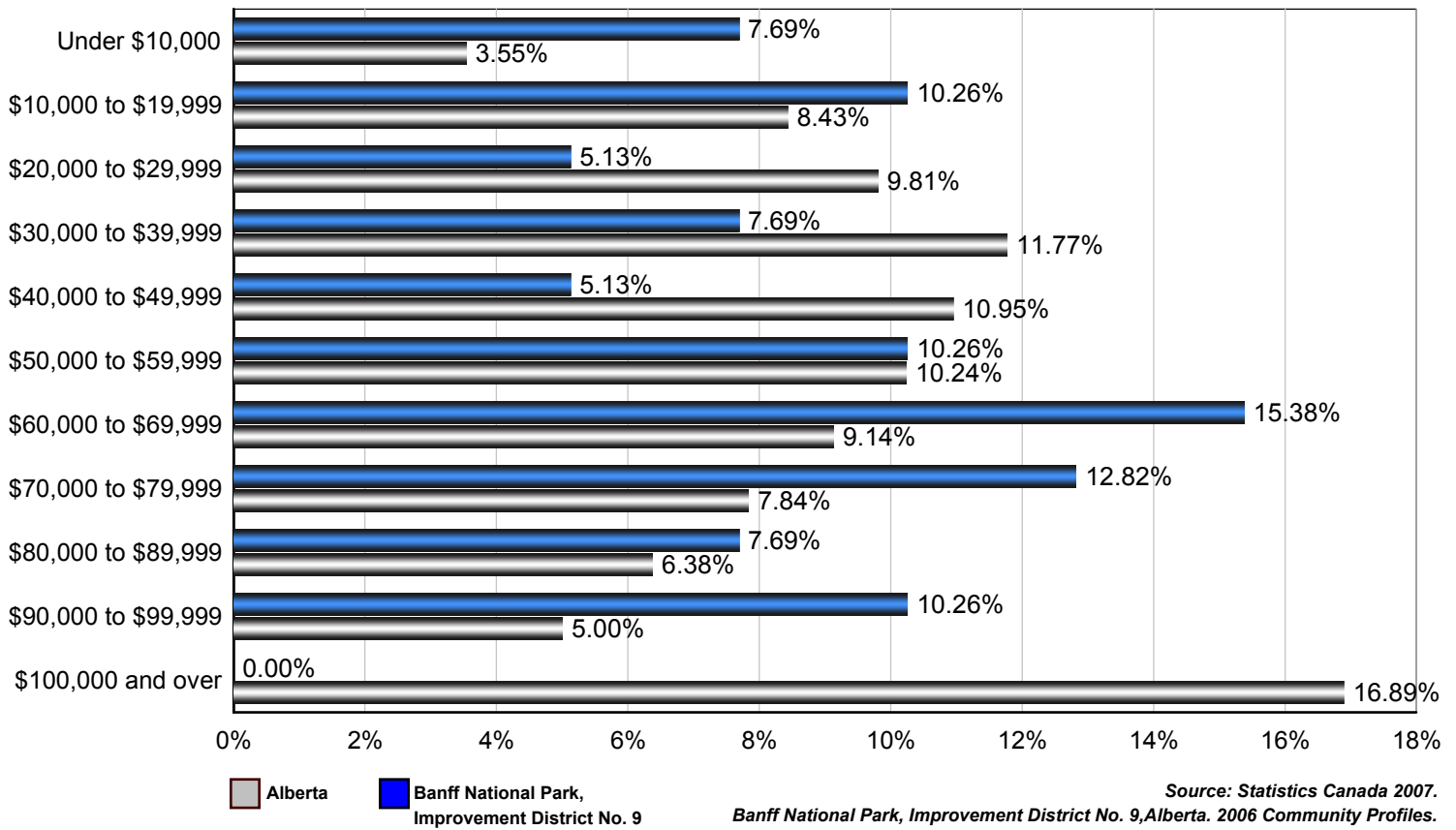
Family Income	
Median After-Tax Family Income	\$72,359
Average After-Tax Family Income	\$71,741

Due to rounding consolidating the shown income brackets may lead to errors. Such errors would be most pronounced for small communities.

Source: Statistics Canada 2007.  
Banff National Park, Improvement District No. 9, Alberta. 2006 Community Profiles. 2006 Census.  
Statistics Canada Catalogue no. 92-591-XWE. Ottawa. Released March 13, 2007.

# Banff National Park, Improvement District No. 9

## Percent of Total Private Households by After-tax Income Brackets - Banff National Park, Improvement District No. 9 vs Alberta (2005)



## Number of Private Households by After-tax Income Brackets - Banff National Park, Improvement District No. 9 (2005)

Income Bracket	Number of Families
Under \$10,000	15
\$10,000 to \$19,999	20
\$20,000 to \$29,999	10
\$30,000 to \$39,999	15
\$40,000 to \$49,999	10
\$50,000 to \$59,999	20
\$60,000 to \$69,999	30
\$70,000 to \$79,999	25
\$80,000 to \$89,999	15
\$90,000 to \$99,999	20
\$100,000 and Over	0
<b>Total</b>	<b>195</b>

	Family Income
Median After-Tax Family Income	\$54,747
Average After-Tax Family Income	\$55,620

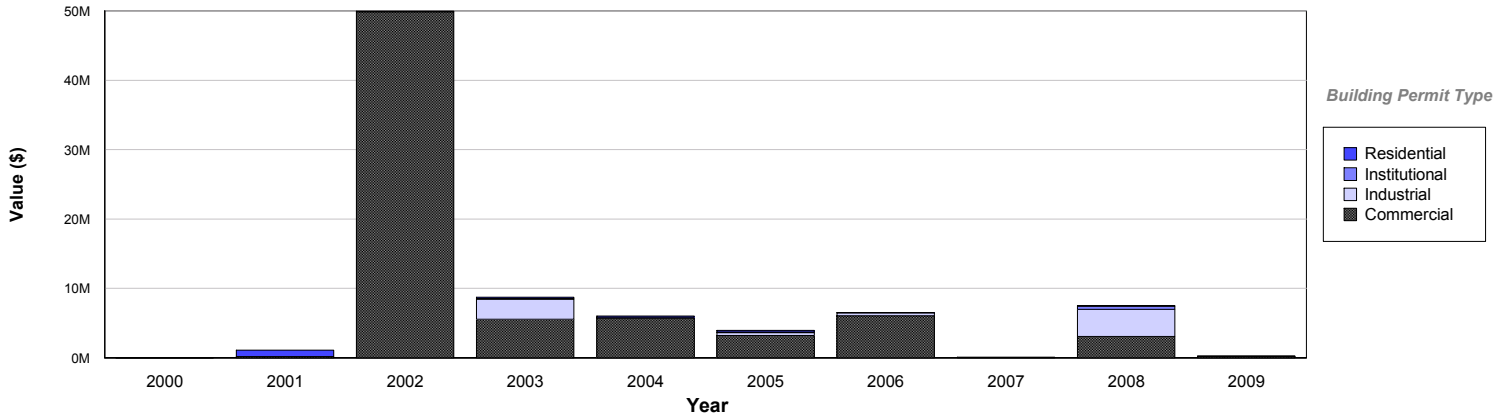
Due to rounding consolidating the shown income brackets may lead to errors. Such errors would be most pronounced for small communities.

Source: Statistics Canada Census

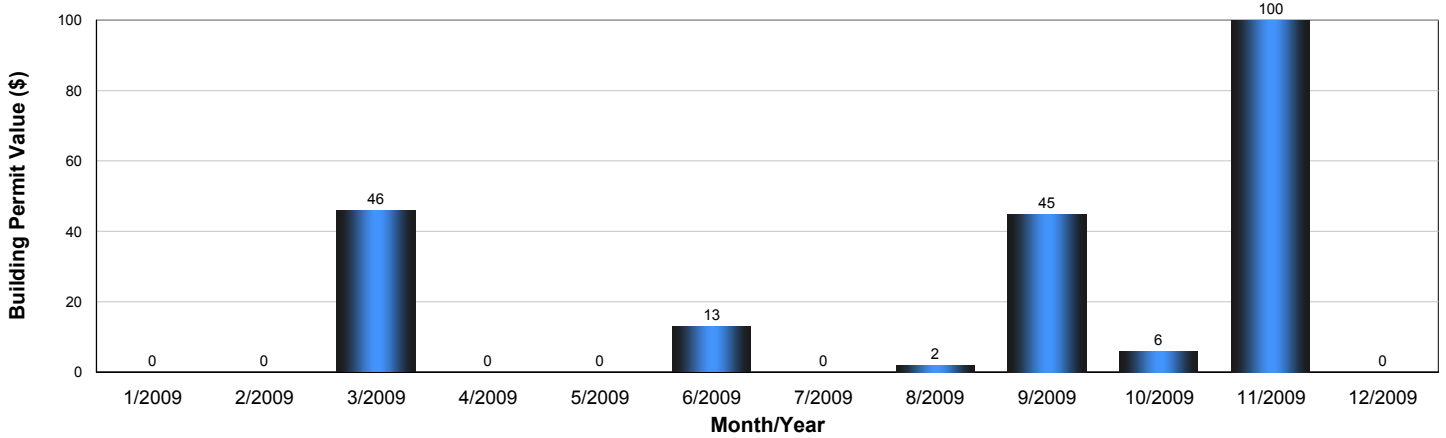
# Banff National Park, Improvement District No. 9

## Building Permits

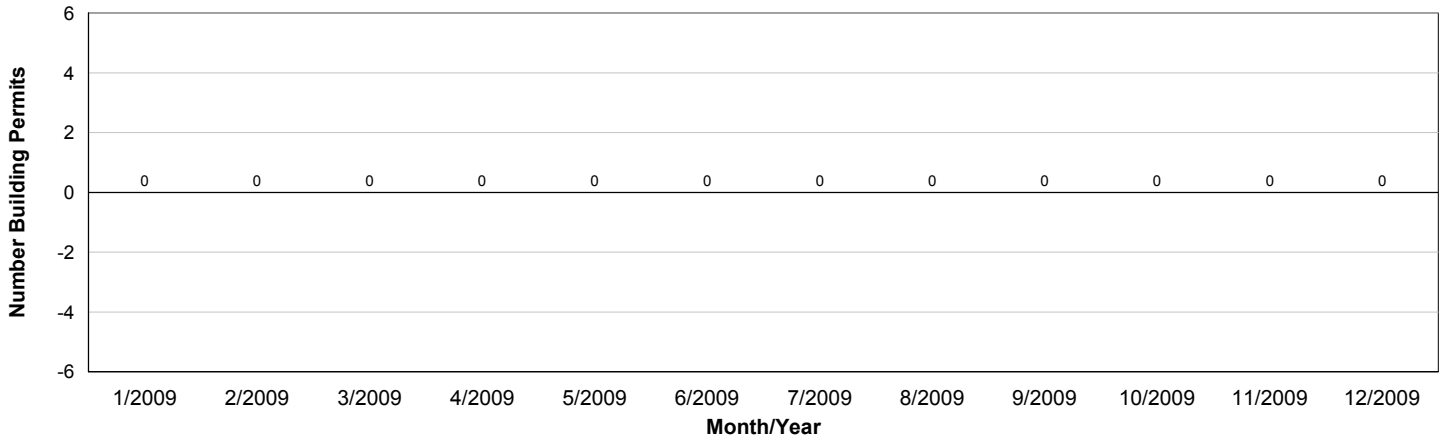
### Value of Building Permits - Banff National Park, Improvement District No. 9



Year	Residential	Industrial	Commercial	Institutional	Total
2009	\$6,000	\$15,000	\$191,000	\$0	\$212,000
2008	\$53,000	\$3,917,000	\$3,060,000	\$482,000	\$7,512,000
2007	\$0	\$0	\$102,000	\$0	\$102,000
2006	\$4,000	\$423,000	\$6,068,000	\$0	\$6,495,000
2005	\$211,000	\$418,000	\$3,188,000	\$112,000	\$3,929,000
2004	\$192,000	\$70,000	\$5,750,000	\$0	\$6,012,000
2003	\$177,000	\$2,905,000	\$5,564,000	\$70,000	\$8,716,000
2002	\$65,000	\$0	\$49,896,000	\$0	\$49,961,000
2001	\$910,000	\$0	\$179,000	\$0	\$1,089,000
2000	\$5,000	\$0	\$0	\$0	\$5,000



### Number of Building Permits - Banff National Park, Improvement District No. 9

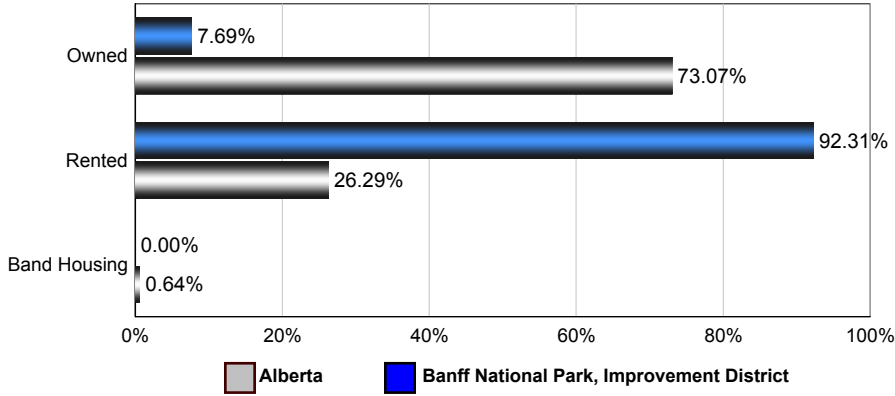


Source: Statistics Canada, Building Permits / Permis de bâtir, Publication 64-001-XWF, 2000 - 2009.

## Dwellings

### Number of Occupied Private Dwellings by Ownership - Banff National Park, Improvement District No. 9

Banff National Park, Improvement District No. 9 vs Alberta (2006)



Banff National Park, Improvement District No. 9

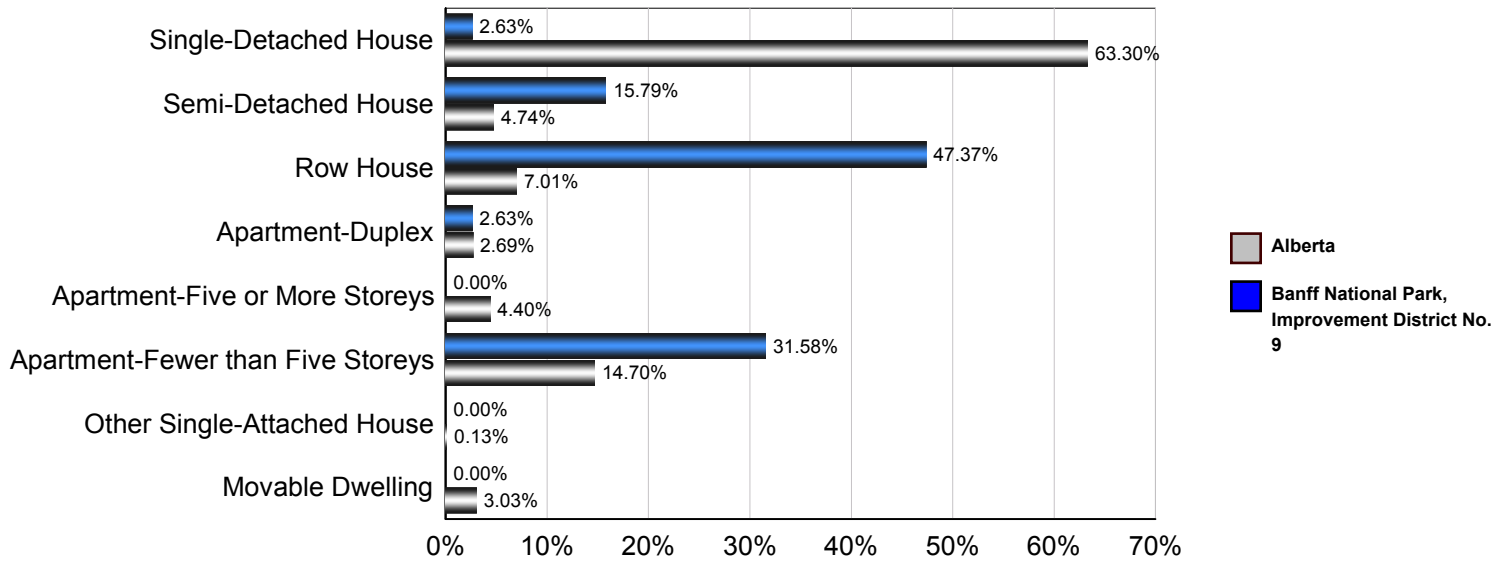
	1996	2001	2006
<b>Owned</b>	20	25	15
<b>Rented</b>	205	245	180
<b>Band Housing</b>	0	0	0
<b>Total</b>	<b>225</b>	<b>270</b>	<b>195</b>

Source: Statistics Canada 2007.  
 Banff National Park, Improvement District No. 9, Alberta. 2006  
 Community Profiles. 2006 Census.  
 Statistics Canada Catalogue no. 92-591-XWE. Ottawa. Released

# Banff National Park, Improvement District No. 9

## Number of Occupied Private Dwellings by Structural Type - Banff National Park, Improvement District No. 9

### Banff National Park, Improvement District No. 9 vs Alberta (2006)



### Banff National Park, Improvement District No. 9

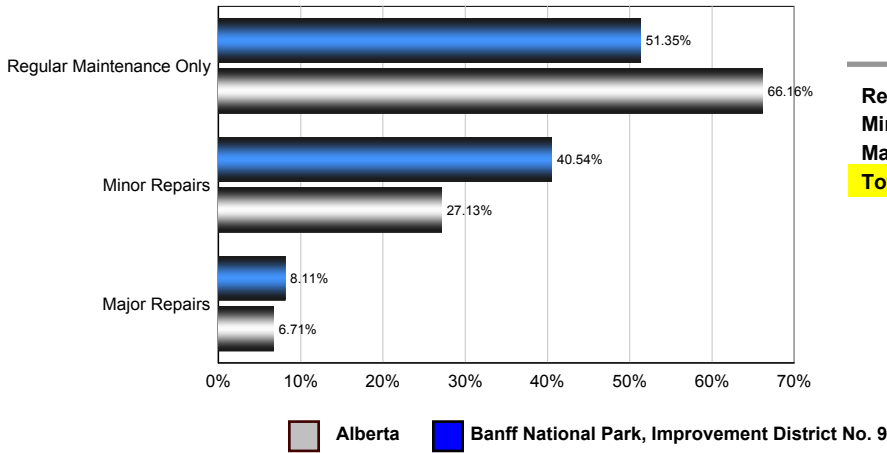
	1996	2001	2006
Single-Detached House	30	20	5
Semi-Detached House	35	40	30
Row House	30	0	0
Apartment - Duplex	10	0	5
Apartment - Five or More Storeys	0	0	0
Apartment - Fewer than Five Storeys	110	115	60
Other Single-Attached House	0	0	0
Movable Dwelling	0	15	0
<b>Total</b>	<b>215</b>	<b>190</b>	<b>100</b>

Source: Statistics Canada 2007.  
 Banff National Park, Improvement District No. 9, Alberta. 2006 Community Profiles.  
 2006 Census.  
 Statistics Canada Catalogue no. 92-591-XWE. Ottawa. Released March 13, 2007.

# Banff National Park, Improvement District No. 9

## Number of Occupied Private Dwellings by the Condition of Dwelling - Banff National Park, Improvement District No. 9

Banff National Park, Improvement District No. 9 vs Alberta (2006)



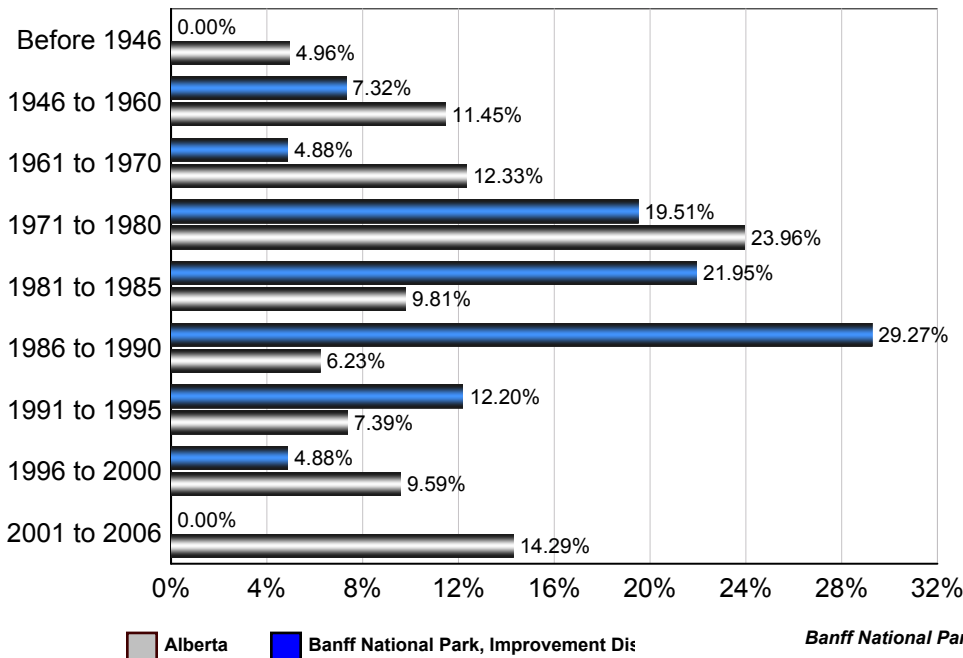
Banff National Park, Improvement District No. 9

	1996	2001	2006
Regular Maintenance Only	155	175	95
Minor repairs	55	90	75
Major repairs	0	10	15
<b>Total</b>	<b>210</b>	<b>275</b>	<b>185</b>

Source: Statistics Canada 2007.  
Banff National Park, Improvement District No. 9, Alberta. 2006 Community Profiles. 2006 Census.  
Statistics Canada Catalogue no. 92-591-XWE. Ottawa. Released March 13, 2007.

## Number of Occupied Private Dwellings by Period of Construction - Banff National Park, Improvement District No. 9

Banff National Park, Improvement District No. 9 vs Alberta (2006)



Banff National Park, Improvement District No. 9

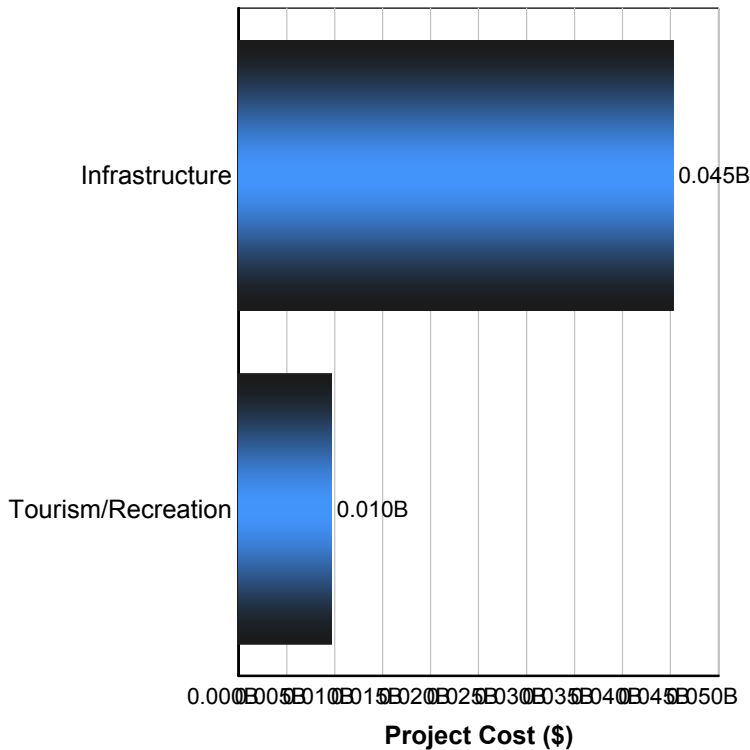
	2006
Before 1946	0
1946 to 1960	15
1961 to 1970	10
1971 to 1980	40
1981 to 1985	45
1986 to 1990	60
1991 to 1995	25
1996 to 2000	10
2001 to 2006	0
<b>Total</b>	<b>205</b>

Source: Statistics Canada 2007.  
Banff National Park, Improvement District No. 9, Alberta. 2006 Community Profiles. 2006 Census.  
Statistics Canada Catalogue no. 92-591-XWE. Ottawa. Released March 13, 2007.

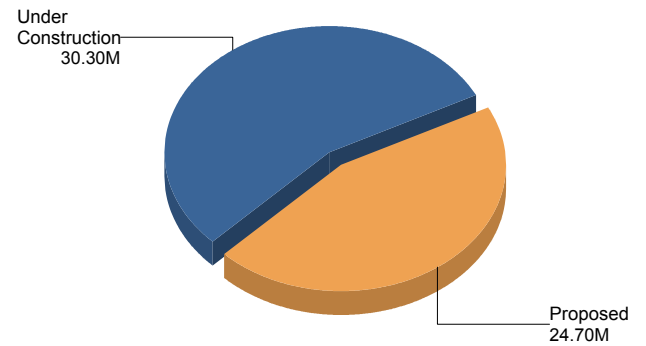


## Projects

### Projects by Sector - Banff National Park, Improvement District No. 9



### Projects by Status - Banff National Park, Improvement District No. 9



Project Status	Number of Projects	Project Costs
Under Construction	1	\$30,300,000
Proposed	3	\$24,700,000
<b>Total</b>	<b>4</b>	<b>\$55,000,000</b>

Project Sector	Number of Projects	Project Costs
Infrastructure	3	\$45,300,000
Tourism/Recreation	1	\$9,700,000
<b>Total</b>	<b>4</b>	<b>\$55,000,000</b>

This inventory lists projects in Alberta that have recently been completed, are under construction, or are proposed to start construction. Not all projects are listed due to reasons of confidentiality and/or due to information not being available at the time of printing. Project data is obtained from public information sources, where possible, this data has been verified with the project proponent/developer, users of the Inventory may wish to confirm project data with the proponent/developer. The inventory does not breakdown project expenditures by any given year. The cost of a project is the value of expenditures expected over all phases of project construction, which may span over two or more years. Cost of projects listed in the Inventory are estimated values only. Source: Alberta Employment, Immigration and Industry.

## Banff National Park, Improvement District No. 9

### Top Largest Projects - Banff National Park, Improvement District No. 9

Company Name	Project Description	Project Location	Project Cost	Construction Schedule	Status
Parks Canada	Twinning Highway 1	Banff National Park (Castle Jct to BC border)	\$30,300,000	31-Dec-2013	Under Construction
Parks Canada	Icefields Interchange (jct Hwys 1 / 93) Upgrade	Banff National Park (Lake Louise)	\$10,000,000		Proposed
Parks Canada	Infrastructure Upgrades	Banff National Park	\$9,700,000		Proposed
Parks Canada	Two Wildlife Overpass Structures	Banff National Park	\$5,000,000		Proposed

Disclaimer: Information in this profile has been provided from a variety of external sources. AlbertaFirst.com Ltd. provides this template, and each community posts their own content within the template. If you find inaccuracies or information you feel needs changing, please contact the community directly. Although every effort has been made to ensure the accuracy, currency and reliability of the content and data, AlbertaFirst.com Ltd. accepts no responsibility in this regard.